



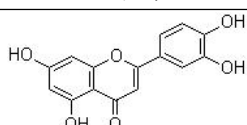
Tel: 400-099-8382 13881987151 18380241536 18981717076  
 Fax: +86-028-85377358  
 QQ: 2850175233 2851730520 2851730522 2851730523 2851730521  
 Skype: herbpurify herbpurify-sales  
 E-mail: ruifensi@herbpurify.com(Domestic) info@chnbestbio.com(International)  
 Website: www.herbpurify.com(Domestic) www.chnbestbio.com(International)

Chengdu Herbpurify CO., LTD

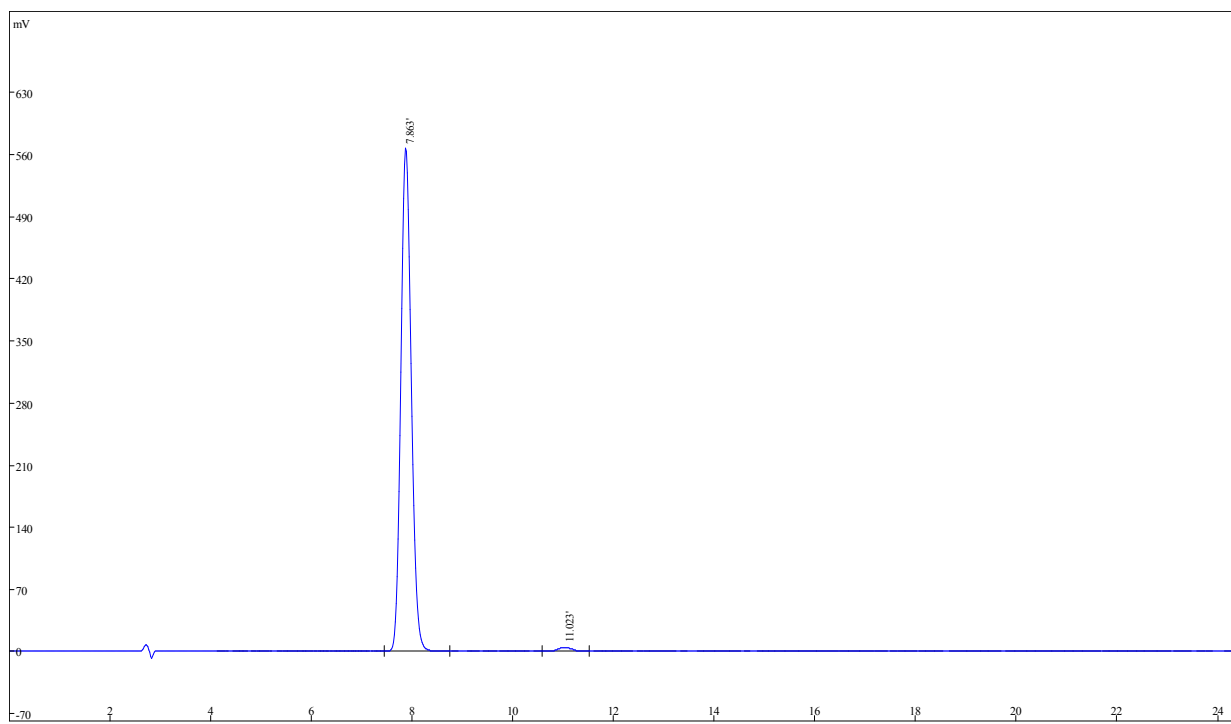
成都瑞芬思生物科技有限公司

Batch NO: M-007-171216

Certificate Of Analysis

<b>Chinese Name</b>	木犀草素	<b>Botanical Source</b>	
<b>English Name</b>	Luteolin	<b>CAS Number</b>	491-70-3
<b>Mol. Formula</b>	C <sub>15</sub> H <sub>10</sub> O <sub>6</sub>	<b>Mol. Weight</b>	286.24
<b>Solubility</b>	Methanol	<b>Appearance</b>	Yellow crystalline powder
<b>Loss on drying</b>	≤2.0%	<b>Purity</b>	98.82%
<b>QC</b>	HPLC: 甲醇: 0.05%磷酸=65: 35 波长 350nm		
<b>Structure</b>			

Luteolin HPLC



Peak#	Ret time[min]	Area%	Area	Height	Resolution	N	Effective plate number	T
1	7.863	98.82	8165326	568775	6.95	7001	0	1.12
2	11.023	1.18	97528	4920	0.00	7215	593	1.08
Total		100	8262854	573695				
<b>Storage</b>	Stored without light and heat. Stored in cool, dry, airproof and innocuous conditions							
<b>Remarks</b>	即配即用，仅限于实验时使用，不能用于人体。 如遇质量问题，请于收到产品之日起 15 日内与我们联系。 Namely with the use, only in the experimental use, can not be used for the human body. In case of quality problems, please contact us within 15 days from the date of receipt of the product.							

Review date : 2017-12-16

Report date : 2017-12-16

Operator: chenli

Q.C manager: Zhengxin