

Journal Pre-proofs

Synthetic flavonoid derivatives targeting the glycogen phosphorylase inhibitor site: QM/MM-PBSA motivated synthesis of substituted 5,7-dihydroxyflavones, crystallography, *in vitro* kinetics and *ex-vivo* cellular experiments reveal novel potent inhibitors

Ben A. Chetter, Efthimios Kyriakis, Daniel Barr, Aikaterini G. Karra, Elisabeth Katsidou, Symeon M. Koulas, Vassiliki T. Skamnaki, Timothy J. Snape, Anna-Maria G. Psarra, Demetres D. Leonidas, Joseph M. Hayes

PII: S0045-2068(20)31300-6
DOI: <https://doi.org/10.1016/j.bioorg.2020.104003>
Reference: YBIOO 104003

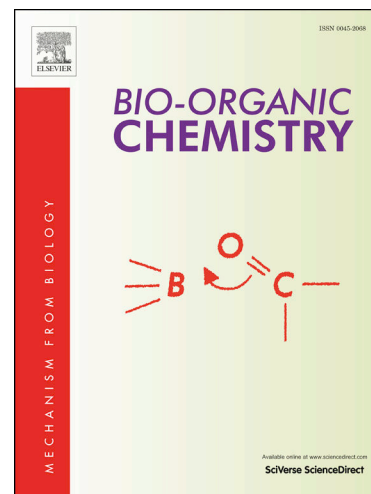
To appear in: *Bioorganic Chemistry*

Received Date: 16 April 2020
Revised Date: 2 June 2020
Accepted Date: 7 June 2020

Please cite this article as: B.A. Chetter, E. Kyriakis, D. Barr, A.G. Karra, E. Katsidou, S.M. Koulas, V.T. Skamnaki, T.J. Snape, A.G. Psarra, D.D. Leonidas, J.M. Hayes, Synthetic flavonoid derivatives targeting the glycogen phosphorylase inhibitor site: QM/MM-PBSA motivated synthesis of substituted 5,7-dihydroxyflavones, crystallography, *in vitro* kinetics and *ex-vivo* cellular experiments reveal novel potent inhibitors, *Bioorganic Chemistry* (2020), doi: <https://doi.org/10.1016/j.bioorg.2020.104003>

This is a PDF file of an article that has undergone enhancements after acceptance, such as the addition of a cover page and metadata, and formatting for readability, but it is not yet the definitive version of record. This version will undergo additional copyediting, typesetting and review before it is published in its final form, but we are providing this version to give early visibility of the article. Please note that, during the production process, errors may be discovered which could affect the content, and all legal disclaimers that apply to the journal pertain.

© 2020 Elsevier Inc. All rights reserved.



Synthetic flavonoid derivatives targeting the glycogen phosphorylase inhibitor site: QM/MM-PBSA motivated synthesis of substituted 5,7-dihydroxyflavones, crystallography, *in vitro* kinetics and *ex-vivo* cellular experiments reveal novel potent inhibitors

Ben A. Chetter,^{a#} Efthimios Kyriakis,^{b#} Daniel Barr,^{a#} Aikaterini G. Karra,^b Elisabeth Katsidou,^b Symeon M. Koulas,^b Vassiliki T. Skamnaki,^b Timothy J. Snape,^{*c} Anna-Maria G. Psarra^{*b}, Demetres D. Leonidas,^{*b} Joseph M. Hayes^{*c}

^a *School of Physical Sciences & Computing, University of Central Lancashire, Preston PR1 2HE, United Kingdom*

^b *Department of Biochemistry & Biotechnology, University of Thessaly, Biopolis, 41500 Larissa, Greece*

^c *School of Pharmacy & Biomedical Sciences, University of Central Lancashire, Preston PR1 2HE, United Kingdom*

* Corresponding authors

tel: +441772894334 (JMH), fax: +441772894981; email: jhayes@uclan.ac.uk
tel: +302410565278 (DDL), fax: +302410565290; email: ddleonidas@bio.uth.gr
tel: +302410565221 (AMP), fax: +302410565290; email: ampsarra@bio.uth.gr
tel: +441772895805 (TJS), fax: +441772894981; email: tjsnape@uclan.ac.uk

Equal contribution.

Abstract

Glycogen phosphorylase (GP) is an important target for the development of new anti-hyperglycaemic agents. Flavonoids are novel inhibitors of GP, but their mode of action is unspecific in terms of the GP binding sites involved. Towards design of synthetic flavonoid analogues acting specifically at the inhibitor site and to exploit the site's hydrophobic pocket, chrysin has been employed as a lead compound for the *in silico* screening of 1169 new analogues with different B ring substitutions. QM/MM-PBSA binding free energy calculations guided the final selection of eight compounds, subsequently synthesised using a Baker-Venkataraman rearrangement-cyclisation approach. Kinetics experiments against rabbit muscle GP_a and GP_b together with human liver GP_a, revealed three of these compounds (**11**, **20** and **43**) among the most potent that bind at the site (K_i s < 4 μ M for all three isoforms), and more potent than previously reported natural flavonoid inhibitors. Multiple inhibition studies revealed binding exclusively at the inhibitor site. The binding is synergistic with glucose suggesting that inhibition could be regulated by blood glucose levels and would decrease as normoglycaemia is achieved. Compound **43** was an effective inhibitor of glycogenolysis in hepatocytes (IC_{50} = 64 μ M), further promoting these compounds for optimization of their drug-like potential. X-ray crystallography studies revealed the B-ring interactions responsible for the observed potencies.

Keywords: Flavonoids; halogens; natural products; QM/MM-PBSA; X-ray crystallography; type 2 diabetes.

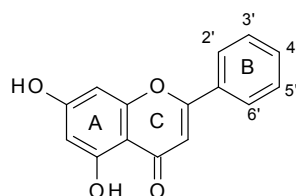
1. Introduction

Type 2 Diabetes (T2D) is a chronic heterogeneous disease characterised by hyperglycaemia. Its prevalence has been rising rapidly, but particularly in low- and middle-income countries [1]. T2D is characterized as a disorder of insulin secretion, insulin resistance and by increased production of hepatic glucose. Glycogenolysis may account for more than 70% of the hepatic glucose production. Additionally, a substantial amount of glucose from gluconeogenesis is cycled through the glycogen pool prior to efflux from the liver cells [2, 3]. The rate-determining enzyme in the glycogenolysis pathway is glycogen phosphorylase (GP; EC 2.4.1.1), rendering GP a very promising and validated target for the development of much needed more effective T2D treatments [4]. However, GP inhibition has also been recognised as having significant potential for the treatment of other conditions such as cancer, myocardial and cerebral ischemias [5-7].

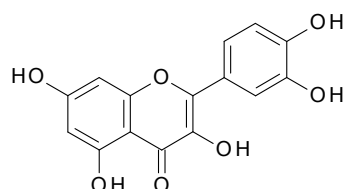
GP is an allosteric enzyme and has a number of different binding sites [8]: the catalytic, allosteric, new allosteric, inhibitor, quercetin binding, [9] benzimidazole [10] and the glycogen storage sites. It exists in two interconvertible forms, the phosphorylated GP_a form which is the predominantly active R state and with high substrate affinity, and the unphosphorylated GP_b form which is the predominantly inactive T state (low substrate affinity) [4]. Phytochemicals are a promising source of compounds with the potential to inhibit GP [11, 12]. Natural flavonoids have been revealed as a good source of GP inhibitors in a number of studies [13-16], which have recently been reviewed [11, 12]. They are ubiquitous components of fruit and vegetables and are consumed in our daily diets. Significantly, studies in diabetic and non-diabetic rats have shown that the anti-hyperglycaemic properties of flavonoids are due to their effect on glycogen metabolism [17-19]. Jakobs *et al.* extensive study of 24 flavonoids demonstrated that most of the compounds investigated inhibited rabbit muscle GP_a (rmGP_a), and that inhibition of GP_a was two to four times better than for rmGP_b [13]. This inhibition of the active GP_a form is favourable in terms of potential for blood glucose regulation in T2D patients.

Structurally, flavonoids have a general scaffold consisting of two aromatic rings (A and B), linked by three carbon atoms that are usually in a heterocyclic ring (C) with oxygen (*c.f.* chrysin, Figure 1). The differences in ring C leads to the structural classification of flavonoids as flavones, flavanols, flavanones, anthocyanidins and isoflavonoids [11]. The best flavonoid inhibitors of GP are on the low μM range, some of which are shown in Figure 1. These

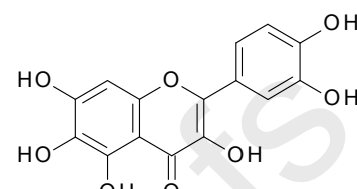
include the flavonols quercetin and quercetagenin; flavones such as 6-hydroxyluteolin and chrysin. Certain anthocyanidins such as cyanadin and catechins such as epigallocatechin gallate (EGCG), are also potent inhibitors. However, the inhibitory potential of different flavonoids is very sensitive to the substitution patterns within the different structural classes [11].



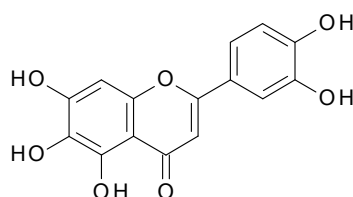
Chrysin
 $IC_{50}(GPa) = 27.5$ [13]
 $IC_{50}(GPb) = 15.3$ [13], $(19.01$
 $(K_i))$ [16]
 Binding site: inhibitor site



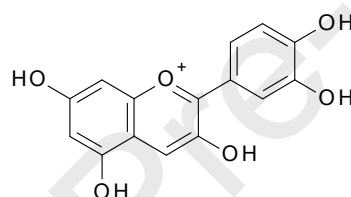
quercetin
 $IC_{50}(GPa) = 4.8$ [13]
 $IC_{50}(GPb) = 20.9$ [13], 33.5 [14]
 Binding site: quercetin [9]



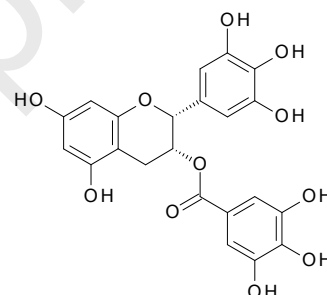
quercetagenin
 $IC_{50}(GPb) = 9.7$ [14], $(3.5(K_i))$ [14]
 Binding site: allosteric



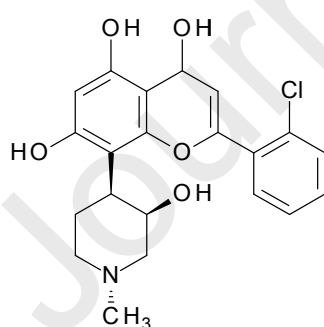
6-hydroxyluteolin
 $IC_{50}(GPb) = 11.6$ [13]
 Binding site: unknown



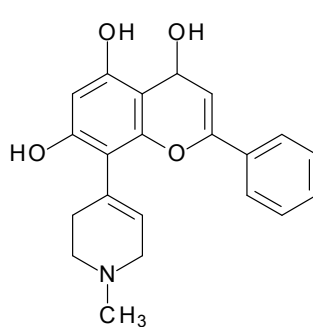
cyanidin
 $IC_{50}(GPa) = 3.0$ [13]
 $IC_{50}(GPb) = 9.0$ [13]
 Binding site: unknown



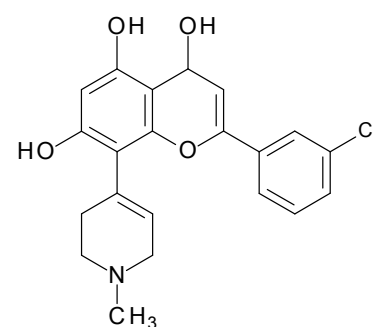
EGCG
 $IC_{50}(GPa) = 7.7$ [13]
 $IC_{50}(GPb) = 33.9$ [13], 34.0 [20]
 Binding site: unknown



Flavopiridol
 $K_i(GPb) = 1.16$ [21], 1.24 [16]
 Binding site: inhibitor site



flavopiridol analogue
 $K_i(GPb) = 1.28$ [22]
 Binding site: inhibitor site*



flavopiridol analogue
 $K_i(GPb) = 0.83$ [22]
 Binding site: inhibitor site*

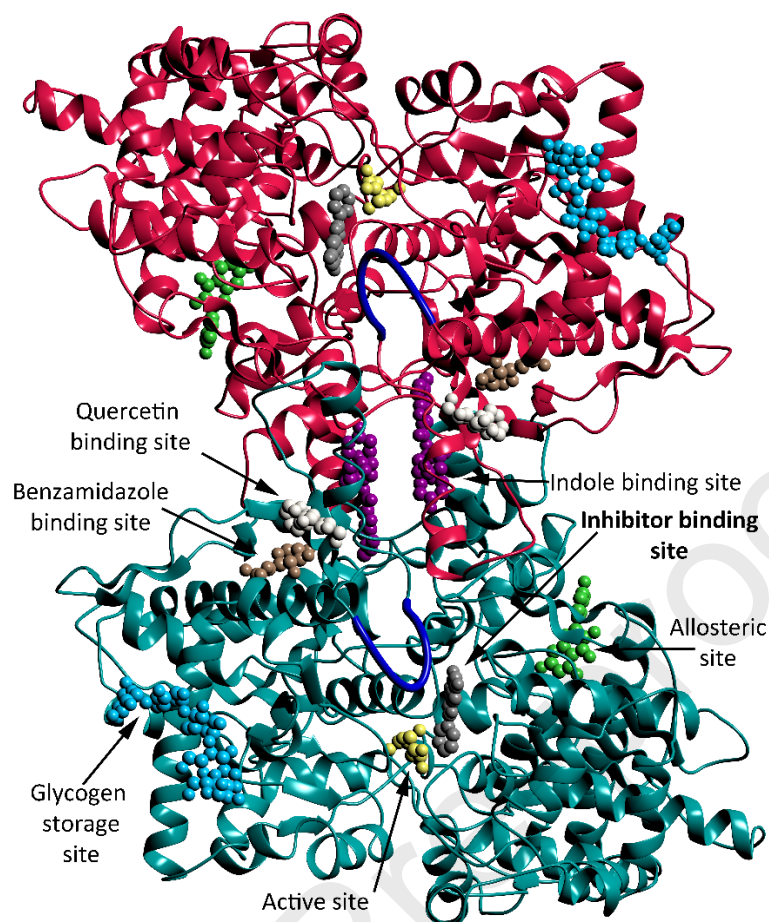


Figure 1. Inhibition constants (μM) for some of the most potent natural flavonoid inhibitors of glycogen phosphorylase known to date together with their inhibition data and binding sites. The flavonoid ring labels A-C and atom numbering scheme used throughout text is shown for chrysin. Also displayed is the synthetic flavonoid derivative flavopiridol, together with two of its analogues. (* = assumed binding site). The GPb dimer is also shown with the various binding sites indicated.

Previously it was assumed that flavonoids may display their inhibitory potential of GP by a similar mode of action. However, it is now evident from recent studies [9, 14-16] that their binding site is dependent on the flavonoid specific substitution patterns, more specifically the presence or absence of different hydroxyl groups. Indeed, the GP binding site of most flavonoids is unknown [11]. However, the binding of chrysin to GP has been studied in detail; its solved crystal structure complex with rmGPb revealed binding exclusively at the inhibitor site [16].

The inhibitor site of GP, also known as the caffeine ($K_i \sim 0.1 \text{ mM}$ [23, 24]) binding site, is found on the surface of the enzyme, approximately 12 \AA from the catalytic site. When the enzyme is in the less active T state, Phe285, from the 280s loop (residues 282-287) is stacked close to Tyr613, from the $\alpha 19$ helix (residues 613-631). These two aromatic residues form the

core of the inhibitor site. The ligands that bind to this site are considerably influenced by these residues due to the potential for an inhibitor to form a sandwich-like complex with GP, exploiting π -stacking interactions with both Phe285 and the Tyr613 sidechains (Fig. 2). This promotes the T state conformation of the enzyme via stabilisation of the closed conformation of the 280s loop, which in turn blocks access to the catalytic site. Inhibition of the binding site generally acts synergistically with glucose, which suggests that inhibition could be regulated by blood glucose levels, and would decrease as normoglycaemia is achieved without causing hypoglycaemia.[25] Because of this property, design of inhibitors targeting the site is particularly attractive from a drug design perspective. The most potent reported inhibitor binding at the site is flavopiridol (Figure 1; $K_i \sim 1.2 \mu\text{M}$ [16, 21]) with slightly better inhibition obtained in a study of its analogues (best $K_i = 0.83 \mu\text{M}$) [22]. Natural products such as flavonoids provide scaffolds for design of potent GP inhibitors but the only flavonoid ligand confirmed to bind at the site is chrysin, with a previously reported K_i of $19.01 \mu\text{M}$ [16].

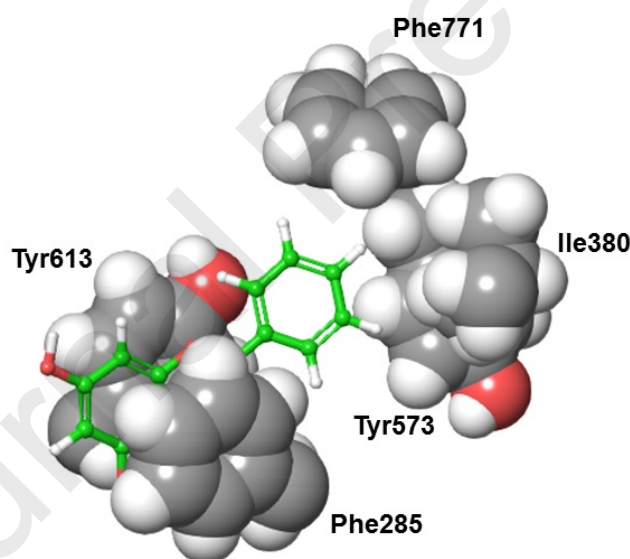


Figure 2. Binding of chrysin at the inhibitor site of rmGPb (PDB entry: 3EBO[16]) highlighting the key π -stacking interactions involved with residues Phe285 and Tyr613 and also the hydrophobic pocket key residues Ile380, Tyr573 and Phe771 in close proximity to the phenyl ring B of chrysin.

Of particular importance to binding of flavonoids at this site is a hydrophobic pocket lined by Ile380, Tyr573 and Phe771, as highlighted in Fig. 2. We have previously proposed that flavonoids with ring B polar OH substituents (in particular at position 4') are unfavourable for inhibitor site binding on the basis of quantum mechanics – molecular mechanics/Poisson

Boltzmann surface area (QM/MM-PBSA) binding free energy (BFE; ΔG_{bind}) calculations [16]. It was demonstrated that quercetagenin with 3' and 4' OH substituents (Fig. 1) displayed poor binding at the site based on its calculated binding affinity, and this was in agreement with multiple inhibition studies proposing allosteric site binding [14]. This theory was further validated by the subsequent discovery of the quercetin binding site (PDB entry 4MRA) discovered through the screening of polyphenolic extracts from the vinification byproducts of *Vitis vinifera* [9]. These binding features have motivated the current work to design more potent synthetic flavonoid analogues of the lead compound chrysin with different ring B that act specifically at the inhibitor site.

In this paper, we present the virtual screening of a library of 1169 compounds exploiting the ZINC database (<http://zinc.docking.org>)[26] using chrysin as the lead compound and its 7-dihydroxy-4H-chromen-4-one moiety as the core scaffold for the design of more effective B ring substituents (Fig. 3). Initial screening was performed using Glide docking [27] in both standard (Glide-SP) and extra precision (Glide-XP) modes but combining the results in a consensus approach both in terms of predicted binding affinities [28, 29] and binding modes [30], aimed at reducing the number of false positive predictions. The top-ranked predicted compounds considered to be synthetically viable were then post-processed using QM/MM-PBSA binding free energy calculations. Eight candidates were selected for synthesis and extensive kinetics studies performed. Crystallographic studies revealed the interactions that govern the observed potencies. Additionally, the effectiveness of the most potent inhibitor for reduction of glycogenolysis at the cellular level was explored.

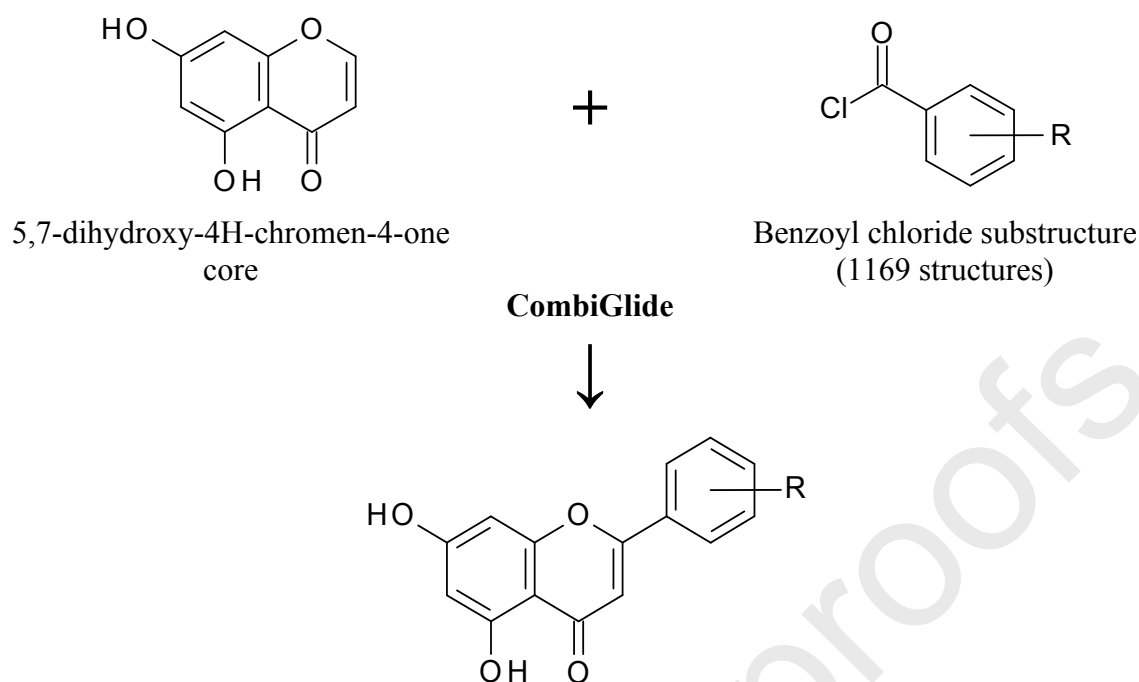


Figure 3. The 7-dihydroxy-4H-chromen-4-one moiety of chrysin and the benzoyl chloride substructure hits from searching the ZINC docking database[26] were combined using CombiGlide to yield the final set of 1169 ligands for virtual screening.

2. Results and Discussions

2.1 *In Silico* Screening

The aim of the calculations was to screen 5,7-dihydroxyflavones for favourable substitutions on ring B. Using the ZINC database [26] and CombiGlide program [27], we generated 1169 unique ligands for initial docking calculations (Fig. 3). The ligands were docked to two models of GPb, *model 1* from its solved crystallographic complex with chrysin (PDB entry 3EBO[16]) and *model 2*, an induced-fit docking GPb model for the predicted complex with 5,7-dihydroxy-2-(naphthalen-2-yl)-4H-chromen-4-one (B phenyl ring of chrysin substituted by a 2-naphthalene group). The latter model aimed to refine the hydrophobic pocket region to accept larger B ring substituents (Fig. 2). For each protein model, the ligands were docked using both Glide-SP and -XP [27], and the predicted potency ranks from each method combined using consensus scoring. Additional consensus of the Glide-SP and -XP docking poses in terms of ligand binding modes was used to further filter ligands, as described in the experimental section, given its potential/propensity to further reduce false positive

predictions [30]. This approach predicted 79 and 257 analogues as more potent than chrysin using *models 1* and *2*, respectively. As anticipated, *model 2* allowed larger substituents on the B ring to occupy a more open hydrophobic pocket.

End point methods such as MM-PB(GB)SA are an effective post-docking strategy for the calculation of binding free energies [31]. QM/MM-PB(GB)SA methods, however, are gaining more prominence due to potential for better description of binding site interactions using QM methods [32-35], and have previously been successfully applied to flavonoid binding at the GP inhibitor site where a QM description was necessary to describe the π -stacking interactions of ligands with residues Phe285 and Tyr613 [16]. Here, preliminary QM/MM-PBSA calculations on the top-ranked 200 ligands from docking for each of *model 1* and *model 2* were performed. Protein-ligand complex geometries that gave ΔG_{bind} values < -11 kcal/mol (a threshold chosen based on its proximity to the ΔG_{bind} value of -12.35 kcal/mol for chrysin) were refined using Prime 4.2 [27] (58 ligands) before a final set of QM/MM-PBSA binding free energy calculations. As expected, the final ΔG_{bind} values were lower for these optimized complex structures and 36 analogues were predicted as more potent than the lead compound chrysin (-14.12 kcal/mol) (Table 1).

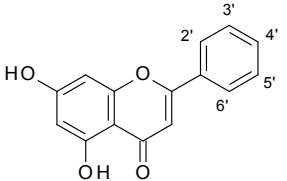
Analysis of the 36 flavonoid derivatives in Table 1 revealed 12, 22 and 2 ligands having mono-, di- and tri-substituted B rings, respectively. These substitutions are mainly in the B ring ortho (21 ligands) and meta (25 ligands) positions, with 10 ligands having para substitutions. The majority of substitutions are with halogens (28 ligands), particularly with fluorine (15 ligands). 5 ligands have di-fluoro B ring substitutions. Fluorine is widely used in the lead optimization phase of drug design projects due to its potential to enhance drug-like properties such as permeability [36]. This has particular significance for flavonoids where oral bioavailability remains one of the most critical issues for their role in nutrition and health [37]. 10, 9 and 2 derivatives contained one Cl, Br or I substituent, respectively. A smaller size halogen, therefore, appeared to be potentially more favourable. One compound had di-chloro substitutions (*meta*- and *para*-positions). Other B ring substituents for the 36 compounds were methyl (2 ligands), amine (2 ligands), aldehyde (CHO) group (1 ligand) and hydroxyl (7 ligands).

Analysing the breakdown of ΔG_{bind} (Eq.(1); *c.f. Experimental Section*) for the top 36 ligands (Table 1), the $\Delta E_{QM/MM}$ values representing the gas phase interaction energy values dominate with values between -55.03 and -79.51 kcal/mol. The strongest $\Delta E_{QM/MM}$ interactions

(compound **16**) have polar hydroxyl groups in the 2' and 3' positions; the corresponding least favourable (compound **29**) has fluorine at the meta positions (3' and 5'). For ligands that are halogen substituted only, the best $\Delta E_{QM/MM}$ values are -60.71 kcal/mol for compound **10** with fluorine (3') and bromine (4') substitutions, and -59.63 kcal/mol for compound **11** with fluorine (3') and chlorine (4') substitutions. However, more favourable $\Delta E_{QM/MM}$ values generally had less favourable solvation free energy changes (ΔG_{solv}) values (range of +21.23 – +45.77 kcal/mol). The larger desolvation penalties were associated with the more polar groups, as demonstrated by the larger polar contributions to the solvation free energy changes (ΔG_{solv}^{PB} term, predominantly electrostatic solvation enthalpy effects). ΔG_{solv}^{PB} values ranged from +26.09 (compound **1**) to +50.38 kcal/mol (compound **16**). Meanwhile, the non-polar contributions (ΔG_{solv}^{SA}) to the solvation free energy changes were small and similar for all ligands (range -4.39 – -5.11 kcal/mol). A sensitive balance between $\Delta E_{QM/MM}$ and ΔG_{solv} for the identification of new potent inhibitors was therefore observed. For example, compound **16** with 2' and 3' OH substitutions had the most favourable $\Delta E_{QM/MM}$ value (-79.51 kcal/mol) but the least favourable ΔG_{solv} value (+45.77 kcal/mol) and was ranked sixteen; ligand (**1**) with a 4' Br substitution had the least desolvation penalty (ΔG_{solv} = 21.23 kcal/mol) but much less favourable $\Delta E_{QM/MM}$ value (-59.29 kcal/mol) yet was ranked first. Entropy changes, $T\Delta S$, on the other hand had a range of just ~ 2 kcal/mol (-13.37 to -15.99 kcal/mol) and did not influence as much the ligand rankings.

Considering synthetic viability as well as the availability of reagents, eight compounds were selected for synthesis and subsequent experimental validation, none of which gave warnings for Pan Assay Interference Compounds (PAINS) [38], as determined using the ZINC on-line filter (<http://zinc15.docking.org/patterns/home/>). Predicted inhibitors ranked **1** (4' = Br) and **2** (2' = OH) were chosen, together with fluoro-substituted **9** (3' = F) and **20** (4' = F). Two di-substituted ligands ranked **10** (3' = Br; 4' = F), and **11** (3' = Cl; 4' = F) were also selected. Although not in the top 36, we additionally chose two other mono-substituted ligands with methyl substituents in the meta 3' (**43**) and para 4' positions (**52**). Their ΔG_{bind} values were -13.47 kcal/mol and -12.01 kcal/mol, respectively. They were ranked in ~ the top 50 from an initial 1169 ligands and their simple non-polar substituents considered to have potential to exploit the hydrophobic cavity from visual inspection of the predicted complexes.

Table 1: QM/MM-PBSA results showing the breakdown of contributions to ΔG_{bind}^a

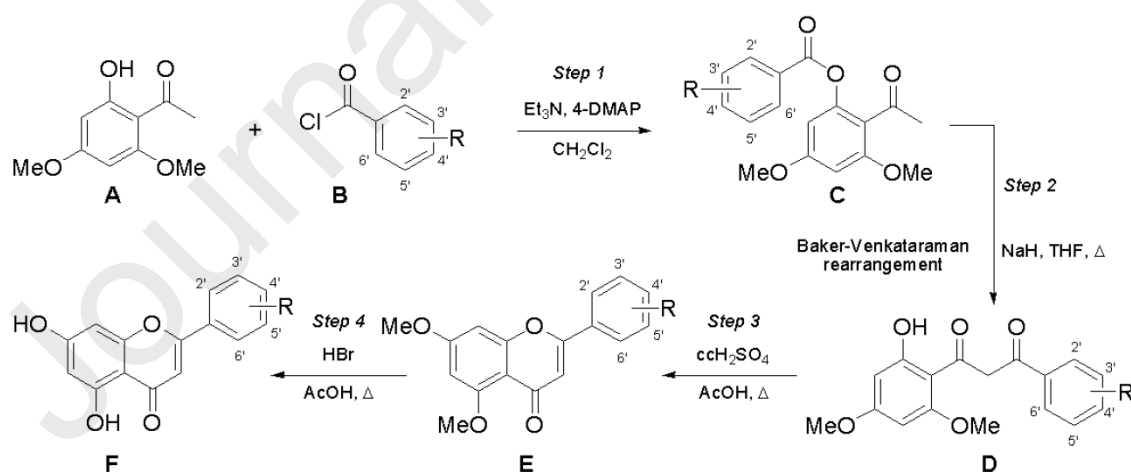
Ligand / rank ^b						QM/MM-PBSA (kcal/mol)					
	2'	3'	4'	5'	6'	$\Delta E_{QM/MM}$	ΔG_{solv}^{PB}	ΔG_{solv}^{SA}	ΔG_{solv}^{total}	$T\Delta S$	ΔG_{bind}
1*	H	H	Br	H	H	-59.29	26.09	-4.86	21.23	-14.69	-23.37
2*	OH	H	H	H	H	-70.83	38.18	-4.78	33.40	-14.69	-22.74
3	Cl	H	H	H	H	-57.88	27.20	-4.98	22.21	-13.85	-21.82
4	F	H	H	Br	H	-59.96	28.66	-4.93	23.73	-14.73	-21.50
5	OH	CH ₃	H	H	H	-65.72	34.82	-4.96	29.86	-14.96	-20.89
6	NH ₂	H	H	Cl	H	-65.65	35.80	-4.58	31.22	-15.14	-19.29
7	Br	H	H	H	H	-59.07	30.53	-4.55	25.98	-13.90	-19.18
8	F	H	Cl	H	H	-57.08	28.14	-4.69	23.45	-14.49	-19.13
9*	H	F	H	H	H	-56.08	28.45	-4.76	23.69	-13.37	-19.02
10*	H	Br	F	H	H	-60.71	32.43	-5.14	27.29	-14.55	-18.87
11*	H	Cl	F	H	H	-59.63	31.45	-4.79	26.66	-14.24	-18.73
12	F	H	F	H	H	-57.21	29.59	-4.47	25.13	-13.69	-18.39
13	F	H	H	I	H	-57.34	29.39	-5.06	24.33	-14.63	-18.38
14	F	H	H	Cl	H	-57.07	29.55	-4.95	24.60	-14.32	-18.15
15	OH	H	H	Cl	H	-71.17	43.26	-5.11	38.15	-15.24	-17.78
16	OH	OH	H	H	H	-79.51	50.38	-4.61	45.77	-15.99	-17.74
17	H	Cl	Cl	H	H	-59.11	32.04	-4.91	27.13	-14.79	-17.19
18	H	Cl	H	H	H	-56.89	30.59	-4.94	25.66	-14.11	-17.12
19	H	NH ₂	H	H	H	-59.52	32.78	-4.69	28.09	-14.42	-17.01
20*	H	H	F	H	H	-59.04	32.80	-4.76	28.04	-14.07	-16.93
21	H	Br	H	F	H	-56.32	29.18	-4.42	24.76	-14.64	-16.92
22	H	Br	H	H	H	-57.31	31.07	-4.76	26.31	-14.11	-16.89
23	F	H	H	H	H	-56.43	30.63	-4.39	26.24	-13.64	-16.54
24	H	F	F	H	H	-58.70	33.86	-5.03	28.83	-14.00	-15.87
25	F	Br	H	H	H	-56.23	30.86	-4.73	26.13	-14.33	-15.76
26	OH	H	Cl	H	H	-71.56	45.10	-4.62	40.48	-15.43	-15.65
27	H	OH	H	OH	H	-71.88	46.16	-4.67	41.49	-14.86	-15.53
28	F	H	H	Br	F	-55.13	30.35	-4.92	25.43	-14.43	-15.27
29	H	F	H	F	H	-55.03	30.39	-4.60	25.79	-14.20	-15.03
30	F	H	F	CH ₃	H	-59.81	34.58	-4.96	29.62	-15.33	-14.87
31	F	H	H	F	H	-56.20	32.22	-4.86	27.36	-13.98	-14.86
32	Cl	H	H	Br	H	-58.38	33.94	-4.85	29.09	-14.64	-14.65
33	H	OH	H	H	H	-70.06	45.21	-4.67	40.54	-15.07	-14.45
34	CHO	H	H	H	H	-58.52	34.48	-4.67	29.81	-14.36	-14.36
35	F	Cl	H	H	H	-55.62	31.98	-4.92	27.06	-14.27	-14.29
36	H	I	H	H	H	-57.39	33.50	-4.71	28.79	-14.34	-14.25

37	<i>H</i>	<i>H</i>	<i>H</i>	<i>H</i>	<i>H</i>	<i>-56.24</i>	<i>33.30</i>	<i>-4.82</i>	<i>28.48</i>	<i>-13.64</i>	<i>-14.12</i>
43*	H	CH ₃	H	H	H	-57.77	34.64	-4.86	29.78	-14.52	-13.47
52*	H	H	CH ₃	H	H	-50.53	28.42	-4.59	23.83	-14.68	-12.01

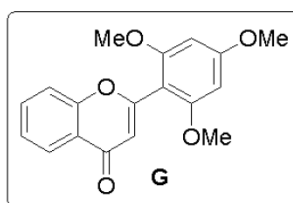
^a c.f. Eq.'s (1) and (2). Chrysin is highlighted in ***bold italics*** and the eight ligands selected for synthesis highlighted with an asterisk (*). ^b Compounds were numbered by rank of predicted ΔG_{bind} .

2.2 Synthesis

In general, compounds **1**, **9**, **10**, **11**, **20**, **43** and **52** were synthesised in four steps (Scheme 1) from commercially available starting materials. The synthetic process started with a union between 2'-hydroxy-4',6'-dimethoxyacetophenone (**A**) and the benzoyl chloride of choice identified from the CombiGlide results (**B**), to yield ester (**C**) in good yields. A base-promoted Baker-Venkataraman rearrangement followed in which the aroyl group migrated from oxygen onto carbon giving rise to diketone (**D**). An acid catalysed cyclization reaction yielded the core flavonoid structure (**E**), which following demethylation, gave the desired products (**F**). For the synthesis of compound **2** (R=2'-OH), the same sequence of steps were repeated (Scheme 1), but instead of using 2'-hydroxy-4',6'-dimethoxyacetophenone (**A**), 2'-hydroxyacetophenone was used instead for a reaction with 2,4,6-trimethoxybenzoyl chloride. In this latter case, compound **G** was isolated as the product of step 3, which after treatment with hydroiodic acid/PhOH under reflux then resulted in de-methylation followed by a ring-opening/ring-closing isomerisation to provide compound **2** (R=2'-OH).



- 1**, R=4'-Br
9, R=3'-F
10, R=3'-Br, 4'-F
11, R=3'-Cl, 4'-F
20, R=4'-F
43, R=3'-CH₃
52, R=4'-CH₃



For the synthesis of compound **2** (R=2'-OH), steps 1-3 above were repeated using 2,4,6-trimethoxybenzoyl chloride and 2'-hydroxyacetophenone which gave **G** as the product of step 3. Treatment of **G** with hydroiodic acid/PhOH under reflux then resulted in de-methylation followed by a ring-opening/ring-closing isomerisation to provide **F** (R=2'-OH).

Scheme 1. Synthesis of the eight substituted 5,7-dihydroxyflavones analogues tested.

2.3 Kinetics

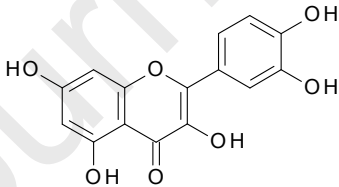
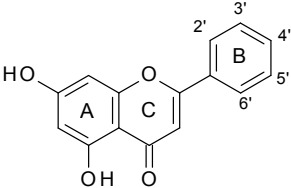
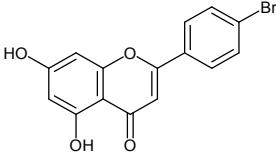
The inhibitory potency of **1**, **2**, **9**, **10**, **11**, **20**, **43** and **52** was assessed against human liver GPa (hlGPa; the pharmaceutical target), and rmGPa and rmGPb for comparison reasons to the structural studies (performed with rmGPb). Since the K_i of quercetin has not been reported and the K_i of chrysin was reported for the glycogen breakdown [16], we determined the inhibition constants for these compounds against all three enzymes for comparison. All results are presented in Table 2. Quercetin displays a preference for rmGPa over rmGPb, as suggested previously by the IC_{50} values [13], but it is not as significant as implied (2-fold vs 5-fold). Nevertheless, quercetin is almost equipotent for rmGPa and hlGPa. Compounds **1**, **2**, and **10** displayed only 14-27% inhibition at 100 μ M for rmGPb and thus, we did not perform any further kinetic studies due to the observed weak inhibition.

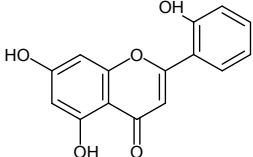
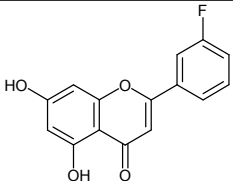
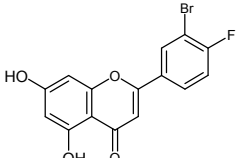
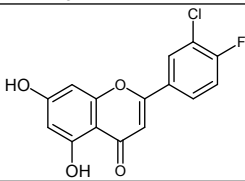
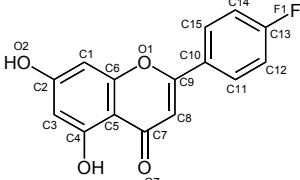
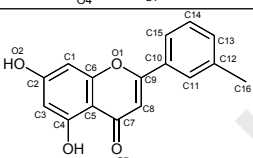
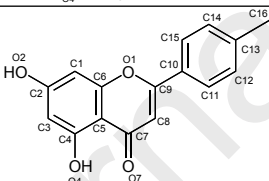
To establish the binding site of **9**, **11**, **20**, **43** and **52**, the inhibition behaviour of the five compounds was investigated with respect to caffeine (inhibitor site) and AMP (allosteric site). The kinetic data were analysed by Dixon plots from which the interaction constant (α) between multiple inhibitors can be estimated [39]. Thus, with varying concentrations of caffeine and **9**, **11**, **20**, **43** or **52**, and constant concentrations of AMP (1 mM) and substrate (Glc-1-P; 20 mM) the Dixon plots, yielded a pattern of parallel lines (interaction constant approaches infinity), indicating that the binding of **9**, **11**, **20**, **43** or **52** and caffeine is mutually exclusive (*i.e.* each one competes with caffeine for the same binding site) [39]. Similar experiments with AMP and constant concentrations of Glc-1-P (2.5 mM) yielded intersected lines in the Dixon plots, signifying that **9**, **11**, **20**, **43** or **52** and AMP are not mutually exclusive (each of the inhibitors and AMP can simultaneously bind at the enzyme) [39]. These experiments indicated that all of the compounds (**9**, **11**, **20**, **43** and **52**) bind to the inhibitor binding site. Compounds **11**, **20** and **43** are significantly more potent inhibitors than quercetin and chrysin, with K_i values in the range of lower μ M ($< 4 \mu$ M for all isoforms), while **9** is equipotent to chrysin (Table 2). **52** is more potent than quercetin but less potent than chrysin. **43** is the most potent of the designed compounds and the second most potent inhibitor reported for the inhibitor site of GP, while **11** and **20** are almost equipotent and also among the most potent compounds discovered to date.

We then investigated whether the binding of the most potent inhibitor **43** to GPb interacts with that of glucose, like caffeine [40] which displays an interaction constant $\alpha=0.2$. Initial velocity studies were performed by varying **43** and glucose concentrations at fixed concentrations of the substrates Glc-1-P (2.5 mM) and glycogen (0.2%). Plotting $1/v$ vs glucose concentration for various **43** concentrations yields a set of lines intersecting at the left of the y axis (Fig. S4). The binding of **43** interacts with glucose in a synergistic manner ($\alpha = 0.65$). Thus, **43** and glucose are able to bind to the enzyme at the same time [39], while each compound promotes the binding of the other, like caffeine and glucose [40] or ellagic acid and glucose [41].

Comparing the phenyl B ring substitutions (Table 2), it seems that a halogen atom at position 3' confers to inhibition with chlorine being the best, followed closely by fluorine, but a larger bromine (**10**) diminishes inhibitory potency. Position 4' seems to have a significant impact, and a fluorine atom at this position increases potency (**11** and **20**), while a methyl group (**52**) has a somewhat negative effect, but again a bromine diminishes potency (**1**). Finally, a single methyl group at the 3' (or 5') position for **43** leads to the most potent inhibitor of all compounds studied here. The inhibitory potency of the compounds seems to follow the same pattern for the three enzymes (*i.e.* K_i values for hGP_a > rmGP_a > rmGP_b).

Table 2. The inhibitory potency the compounds studied here for glycogen phosphorylases. The crystallographic atom numbering is shown in the inhibitors.

Compound		K_i [μ M]		
		rmGP _b	rmGP _a	hGP _a
Quercetin		69.12 ± 4.71	32.93 ± 2.49	43.52 ± 1.65
Chrysin		7.56 ± 0.81	5.14 ± 0.06	7.28 ± 0.09
1		14 % inhibition at 100 μ M	-	-

2		16 % inhibition at 100 μ M	-	-
9		7.26 ± 0.60	8.55 ± 0.57	7.39 ± 0.09
10		27 % inhibition at 100 μ M	-	-
11		1.89 ± 0.05	2.27 ± 0.08	3.39 ± 0.22
20		2.31 ± 0.19	3.46 ± 0.13	3.89 ± 0.08
43		1.00 ± 0.05	1.75 ± 0.17	2.23 ± 0.08
52		11.40 ± 0.41	17.79 ± 2.37	21.36 ± 0.98

2.4 X-ray Crystallography

The crystal structures of rmGPb in complex with **20**, **43** and **52** were determined to elucidate the structural basis for their strong inhibition potency. Rabbit muscle and human liver GP share 97% sequence homology and both enzymes are fully conserved in terms of sequence and structure at the inhibitor binding site, thus any structural analysis on rmGPb can also apply for hLGPa. All three compounds were found bound, as expected, at the inhibitor site of the enzyme with all their atoms well defined within the electron density maps (Fig. 4). All three inhibitors bind very similar. Their binding modes are also similar to those of chrysin [16] and flavopiridol [21]. The RMSD of 0.8 Å between the free rmGPb structure and those

of **20**, **43** and **52** complexes with GPb, for all atoms of well-defined residues (18-249, 262-312, 326-829), indicates that the binding of the inhibitors does not trigger any significant conformational change.

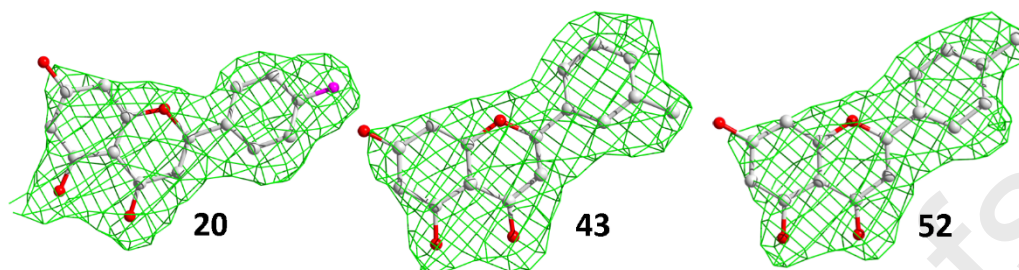


Figure 4. The Phenix polder omit difference electron density maps [42] of the ligands at the inhibitor site. Maps are contoured at 3.0σ while the final models of the inhibitors are shown.

The A and C rings (Table 2) are packed between the aromatic side-chain phenyls of Phe285 and Tyr613 engaging in π -stacking (parallel) interactions. Para-fluorine atom of **20** is at distances of 3.1 and 3.2 Å from Arg770 (NH1) and Glu382 (OE2), respectively, forming two fluorine bonds [43]. In all of the three inhibitor complexes, the hydroxyl group (O4) of the inhibitor molecule (Table 2), engages in two water mediated interactions with the main chain nitrogen atoms of Pro611 and Gly612, while the carbonyl oxygen (O7) forms two water mediated interactions with the main chain carbonyl oxygen and nitrogen of Asp283 (Fig. 5). Overall, **20** is involved in 101 (58 nonpolar/nonpolar, 6 polar/polar, 37 nonpolar/polar) van der Waals interactions mainly with Phe285 and Tyr613 (64 contacts), and with Asn282, Glu382, His571, Ala610, Gly612, and Arg770. **43** forms 91 (58 nonpolar/nonpolar, 4 polar/polar, 29 nonpolar/polar) van der Waals interactions mainly with Phe285 and Tyr613 (64 contacts), and with Asn282, Asn284, Glu382, Glu572, Ala610, Gly612, and Arg770. **52** engages in 89 (55 nonpolar/nonpolar, 4 polar/polar, 30 nonpolar/polar) van der Waals interactions mainly with Phe285 and Tyr613 (59 contacts), and with Asn282, Asn284, Glu382, His571, Glu572, Ala610, Gly612, Arg770, and Phe771 (Fig. 5). The solvent accessibilities of the free **20**, **43** and **52** are 432, 450, and 448 Å², respectively. When bound these values become 83, 88, and 91 Å² indicating that approximately 80% of their surface area becomes inaccessible to the solvent. The greatest contribution comes favorably from the non-polar rmGPb residues that contribute 77%, 81%, and 86% of the protein surface which becomes inaccessible upon binding of **20**, **43** and **52**, respectively. The fluorine atom of **20** is involved in 7 (2 polar/polar, 5 polar/non-polar) van der Waals interactions with Glu382, Arg770, and Phe771. The methyl group of **43** and **52**, is involved 4 (2 polar/polar, 2

polar/nonpolar) and 5 (3 polar/polar, 5 polar/nonpolar) van der Waals interactions, respectively with Asn284, Leu380 and Glu382 (**43**) or Glu382, Arg770, and Phe771 (**52**).

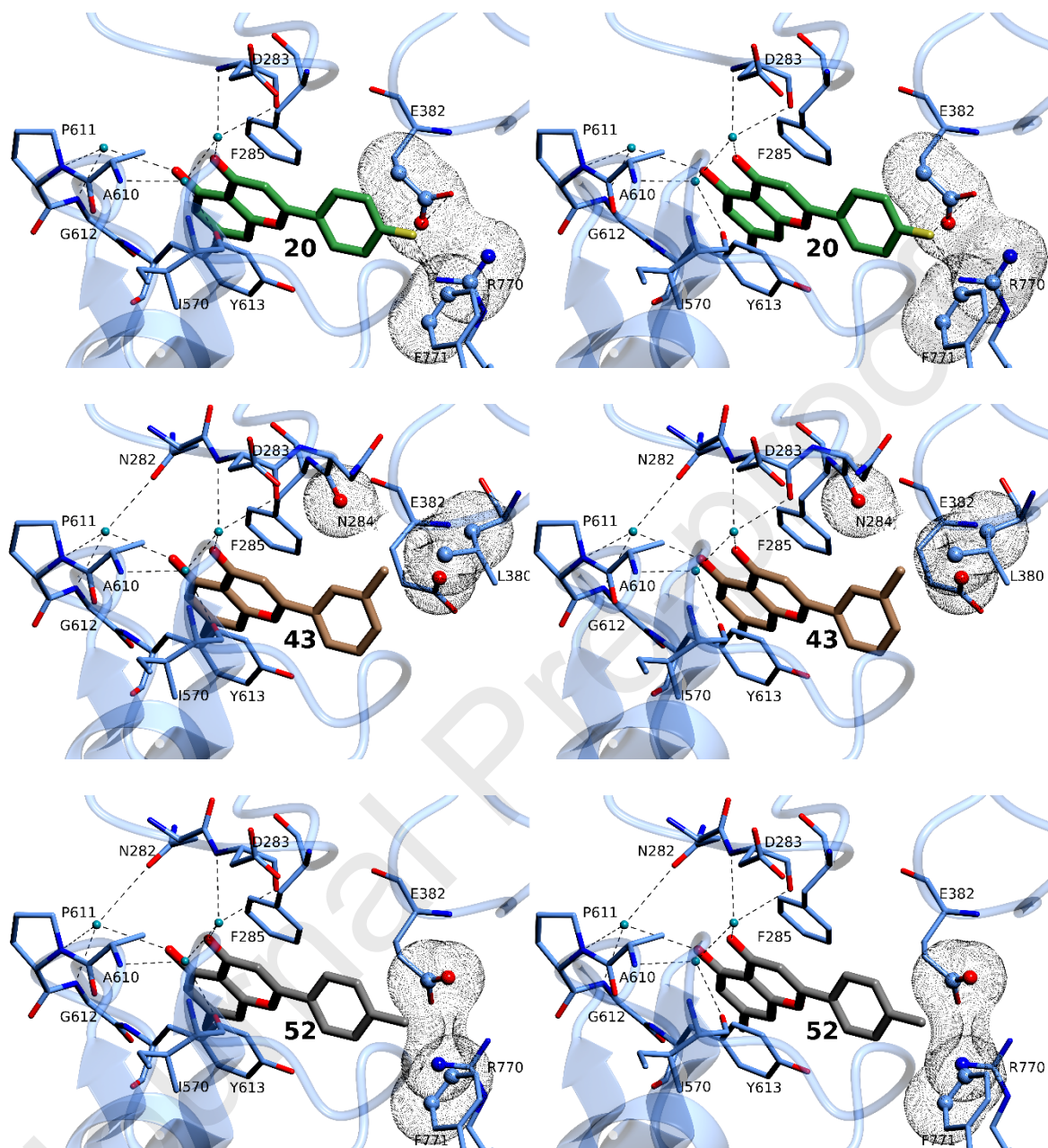


Figure 5. Stereo diagrams of the interactions of the ligands **20**, **43** and **52** at the inhibitor site. The inhibitor molecules are shown as thick bonds, water molecules as cyan spheres and hydrogen bonds as dashed lines and van der Waals interactions of the B ring as mesh cloud.

Comparative structural analysis of the three inhibitor complexes reveals that while **20** and **43** bind at the same location within the inhibitor binding site of rmGPb the location of **52** differs by approximately 0.4 Å, and **52** is more exposed to the solvent (or less buried within the protein structure). The significant difference between the inhibitory potencies of **20** and **52** (Table 1) might be attributed to the two fluorine bonds and the 12 additional van der Waals

interactions of **20** with respect to the interactions of **52**. Although, **20** forms two fluorine bonds and 10 van der Waals interactions in addition to those of **43**, both inhibitors are almost equipotent (K_i s 2.3 and 1.0 μ M, respectively). The presence of the fluorine in **20** triggers a small but significant conformational change of Glu382 (RMSD between the two conformations is 1.1 Å). The conformation adopted by the side chain of Glu382 in the rmGPb-**20** complex is very similar to the one that it adopts in the rmGPb-**52** complex (RMSD between the two conformations is 0.2 Å). Therefore, it seems that the energy cost associated with the conformational change of Glu382 that accompanies the binding of **20**, is compensated by the additional interactions of **20**, and hence **20** and **43** are almost equipotent.

Superposition of three inhibitor complexes onto the rmGPb – chrysin complex [16] (Fig. 6) reveals that although chrysin binds very similarly to the new inhibitors, its position differs by 0.4, 0.6, and 0.8 Å from the binding locations of **20**, **43**, and **52**, respectively. Upon binding to rmGPb, chrysin forms 96 van der Waals interactions (54 nonpolar/nonpolar, 4 polar/polar, and 38 polar/nonpolar) and two water mediated hydrogen bonds [16]. The difference in the inhibitory potency between chrysin and **20** might be attributed to the fluorine bonds formed by the latter compound. However, the significant difference between the inhibitory potencies of both **43** and **52** with that of chrysin cannot be attributed to the small shift in their binding location within the inhibitor site.

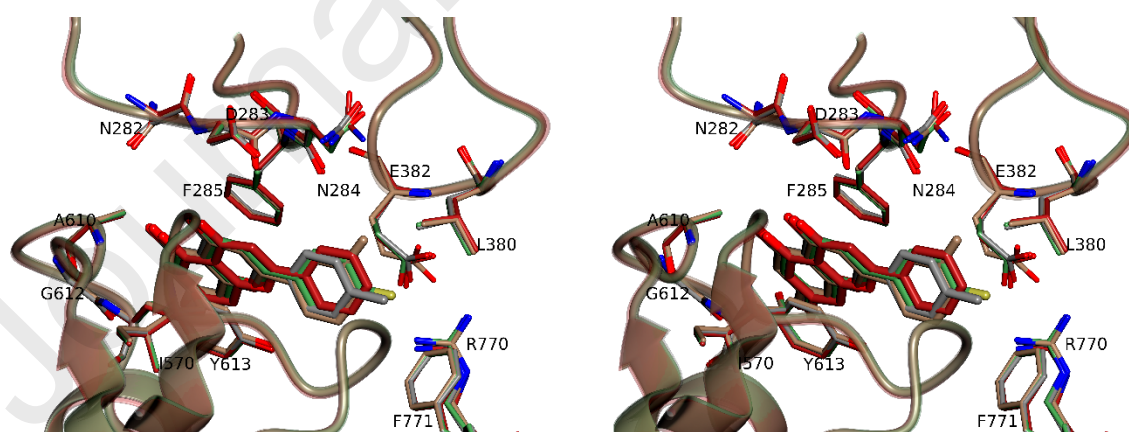


Figure 6. Stereo diagram of the superposition of the **20**, **43**, and **52** complexes onto the rmGPb-chrysin complex [16].

2.5 Ex-vivo Cellular Studies

The efficacy of inhibitor **43** to inhibit glycogen phosphorylase was also evaluated in hepatocarcinoma HepG2 cells. For that purpose, HepG2 cells were precultured in high glucose medium (25 mM glucose), in the presence of 10 nM insulin, to activate glycogen synthesis. Upon inhibitor **43** treatment, cells were cultured in low glucose medium (5 mM glucose), in the presence of 10 nM DEX, conditions appropriate to induce glycogenolysis. Inhibitor **43** was checked at a concentrations range of 55 μ M to 330 μ M. Assessment of the enzymatic activity of GP in cellular extracts of HepG2 cells treated with the inhibitor **43** revealed high potency of inhibitor **43** to suppress GP activity, exhibiting IC_{50} of 70 μ M (Fig. 7).

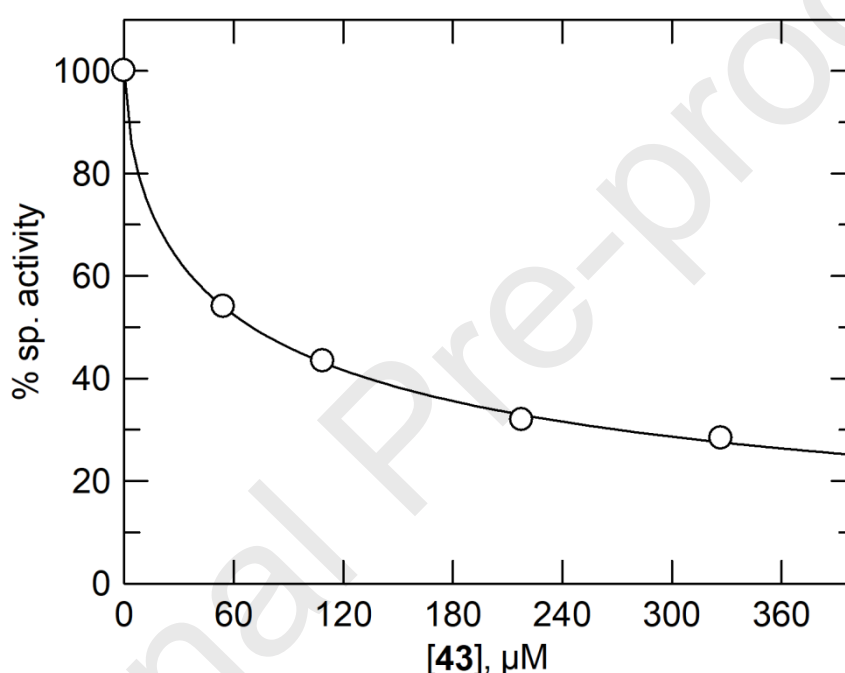


Figure 7. GP inhibition by inhibitor **43** in HepG2 cells. GP activity was assayed in lysates after 3 h incubation of the cells with 54.5, 109, 218 and 327 μ M of **43** as described in the *Experimental Section*. The value of IC_{50} was calculated as 70 ± 2.5 μ M using the program GRAFIT and the “explicit weight” function to take into account all experimental error. GP activity was measured at 4 different times and determined using the same method as for the in vitro assays.

3. Conclusions

In silico screening for GP inhibitors acting at the inhibitor site has been performed using chrysin as the lead compound[16] and post-docking QM/MM-PBSA binding free energy calculations. By retaining the 5,7-dihydroxy-4H-chromen-4-one ligand core of chrysin and screening for different B ring substitutions exploiting the ZINC database[26], eight

candidates from the *in silico* screening were selected for synthesis with the potential for more favourable interactions at the inhibitor site hydrophobic pocket. The target compounds were synthesized using a Baker-Venkataraman rearrangement-cyclization strategy, yielding the compounds in modest yields over the four step procedure. Kinetics experiments against rmGPb revealed compounds **11** ($K_i = 1.9 \mu\text{M}$), **20** ($K_i = 2.3 \mu\text{M}$) and **43** ($K_i = 1.0 \mu\text{M}$) among the most potent inhibitor site compounds known to date and more potent than any previously reported natural flavonoid inhibitor; multiple inhibition studies revealed binding exclusively at the site, and this was confirmed by X-ray crystallographic studies. The crystal structure GPb – inhibitor complexes revealed the interactions responsible for the observed potencies, which included favourable halogen B ring interactions at positions 3' and 4', but most significantly a nonpolar substituent (particularly methyl) at the meta position. *Ex-vivo* experiments for the most potent inhibitor (**43**) were also encouraging and revealed the compound to have strong inhibitory effects on endogenous GP activity in HepG2 cells in culture ($\text{IC}_{50} = 70 \mu\text{M}$). In addition, optimization of the pharmacological potential of the compounds can include modification of A and C ring properties and substituents. The increased potency of flavopiridol compared to chrysin with A ring substitutions supports such an approach [16, 22]. Additionally, while natural flavonoids have quite low oral bioavailability, flavopiridol does not [44], and together with the promising cellular results obtained here for **43**, highlights the potential of synthetic flavonoid analogues in drug discovery projects such as this.

4. Experimental Section

4.1. Computational Details

4.1.1. Protein Preparation

The GPb protein was prepared for calculations using the solved 1.9 Å resolution co-crystallized complex with chrysin (PDB code 3EBO) and Schrödinger's Protein Preparation Wizard [45]. The waters within 5 Å of chrysin were retained, bond orders assigned and hydrogens added, with protonation states for basic and acidic residues based on pK_a 's at a pH of 7 calculated using PROPKA[46]. Subsequent optimization of hydroxyl groups, histidine protonation states and C/N atom flips, and side-chain O/N atom flips of Asn and Gln residues was based on optimizing hydrogen bonding patterns. Finally, the system was softly

minimised using OPLS-AA (2005) forcefield with the RMSD of heavy atoms kept within 0.3 Å of the crystallographic positions.

4.1.2. Ligand Database Preparation

Using the ZINC docking database (<http://zinc.docking.org/>)[26], benzoyl chloride derivatives were filtered so that the final set of screening compounds fulfilled certain criteria (MW, HBAs, HBDs) among Lipinski's 'rule of five' [47] for oral bioavailability [MW < 500 Da, hydrogen bond acceptor (HBA) ≤ 10 , hydrogen bond donor (HBD) ≤ 5 and $\log P < 5$]. The formal charge of the benzoyl chlorides was set to be 0 (more suitable for synthesis) and also a limit set on the ligand flexibility for final compounds (number of rotatable bonds ≤ 5) to limit entropy loss on binding; a larger number of rotatable bonds (≥ 10) has also been associated with poor oral bioavailability [48]. Including these restrictions yielded 1169 benzoyl chloride derivatives. These were joined to the 5,7-dihydroxy-4H-chromen-4-one core (Figure 3) using CombiGlide 3.9 with LigPrep [27]. This protocol yielded 1239 minimised structures including potential tautomers/ionization states ready for virtual screening.

4.1.3. Docking

Docking of ligands was performed to the prepared protein conformation from its complex with chrysin (*c.f.* 4.1.1.) (*model 1*) and also to an induced-fit docking (IFD) GPb model (*model 2*) of its complex with 5,7-dihydroxy-2-(naphthalen-2-yl)-4H-chromen-4-one (B ring as a 2-naphthyl). In Stage 1 of the IFD, the 5,7-dihydroxy-2-(naphthalen-2-yl)-4H-chromen-4-one was docked to the inhibitor site of *model 1* using Glide 6.9 with the SP scoring function and up to 20 poses per ligand saved. The core of the ligand (A and C ring atoms) involved in the π -stacking was restrained to its original position (PDB code: 3EBO) using core constraints (tolerance 0.10 Å). The hydrophobic pocket Leu380 sidechain was temporarily trimmed in this stage (mutated to Ala), as well as scaling of the van der Waals radii of non-polar atoms by 0.5. Stage 2 was a Prime 4.2 refinement, with residues in the hydrophobic pocket refined. For Stage III, up to 20 protein conformations within 30 kcal/mol of the lowest-energy structure were used for Glide-SP re-docking. The top-ranked complex based on IFDscore was selected as *model 2* for subsequent docking.

In the docking calculations of screening compounds to GPb *models 1* and *2* with Glide 6.9[49] [50], the shape and properties of the inhibitor binding site were mapped onto grids with dimensions of $23.1 \times 23.1 \times 23.1$ Å centred on the bound ligands. Standard parameters

were applied including van der Waals scaling for non-polar atoms (by 0.8) to include modest ‘induced-fit’ effects. Core constraints (RMSD of 0.10 Å) were applied on the A and C ring atoms. Docking calculations were performed using both Glide-SP and -XP, both of which included post-docking minimization with strain correction. All 1169 ligands were docked with 1 pose per ligand saved for each docking calculation, and compounds ranked by GlideScore. For each GP model (*models 1* and *2*), ligands were re-ranked by consensus scoring using a Simple Sum Rank [28] of the Glide-SP and -XP ranks. RMSDs between ligand atom positions for compounds that gave both SP and XP results were calculated to determine if similar (consensus) poses were obtained [30]. A RMSD cut-off < 1.0 Å was applied for consensus pose agreement and retention of ligands. Additionally, ligands not feasible with the Baker-Venkataraman rearrangement and/or with B ring substituents considered too bulky were filtered. Based on this process, the top 200 ligands for each of the two GPb conformation *models 1* and *2* proceeded to the QM/MM-PBSA binding free energy calculations.

4.1.4. QM/MM-PBSA Calculations

Glide-SP poses for the top 200 ligands from each GPb model for docking were used directly as input for QM/MM-PBSA calculations. Binding free energies were calculated as the difference in energies between the bound and the unbound states of the protein-ligand complexes using Eq. (1).

$$\Delta G_{bind} = \Delta E_{QM/MM} + \Delta G_{solv} - T\Delta S_{MM} \quad \text{Eq. (1)}$$

$E_{QM/MM}$ and S_{MM} represent the total molecular mechanics energy (internal, electrostatic and van der Waals) and an entropy estimate, respectively; G_{solv} , the solvation free energy. DFT with the M06-2X functional[51] and the LACVP*+ basis set [52, 53] was used for the QM region (ligand, Phe 285 and Tyr 613 sidechains) and the rest of the protein was described using MM with the OPLS-AA(2005) forcefield [54]. Effectively, the MM region polarizes the QM region, with electrostatic effects between the MM point charges and the QM wavefunction, and the van der Waals interactions between QM and MM atoms accounted for.[54] No cut-off for non-bond interactions was employed. Corrections for basis set superposition error (BSSE) were not included given that the key QM interaction region atoms were the same for all ligands (rings A and C with Phe285 and Tyr613) and resulting cancellation of errors [16]. Additionally, while the magnitude of BSSE is dependent on intermolecular distance [55], the core constraints employed in the docking phase counteracted

this effect. Bulk solvation effects were included using Poisson-Boltzmann Surface Area (PBSA) [56], with the default solute (internal) dielectric constant of 1.0 employed. The ΔG_{solv} term was calculated as two components:

$$\Delta G_{solv} = \Delta G_{PB}^{solv} + \Delta G_{SA}^{solv} \quad \text{Eq. (2)}$$

where ΔG_{PB}^{solv} and ΔG_{SA}^{solv} account for the polar and non-polar (proportional to changes in solvent accessible surface areas) contributions, as described previously [34]. Meanwhile, an estimate for the loss of ligand entropy (ΔS_{MM}) on binding was calculated using MM with the OPLS-AA(2005) forcefield [54] and the Rigid Rotor Harmonic Oscillator (RRHO) approximation. Using this method, the change in vibrational, rotational and translational entropy of the ligands on binding was considered. QM/MM-PBSA calculations were performed using QSite 6.9 [49]; RRHO calculations using MacroModel 11.0 [49].

The ΔG_{bind} values of ligands from both protein models (*model 1* and *2*) were compared and the best ΔG_{bind} value taken, together with its receptor-ligand complex. Ligands were ranked by ΔG_{bind} values and those with a value < -11 kcal/mol considered further. A Prime 4.2 [49] minimization was used to refine the corresponding protein-ligand complexes using default settings that included the OPLS3 forcefield [57] and VSGB solvation model [58]. Sidechains of residues surrounding the hydrophobic pocket (Asp283, Asn284, Glu382, Leu380, His571, Glu572, Tyr573, Arg770 and Phe771) together with the ligands were refined during this process, but flavonoid rings A and C constrained to maintain the original π -stacking distances with Phe285 and Tyr613. Final QM/MM-PBSA binding free energies were determined using the Prime output complexes as input, employing the same settings as before.

4.2 – Synthetic Methods

General procedure for the synthesis of **1**, **9**, **10**, **11**, **20**, **43** and **52**

2'-Hydroxy-4',6'-dimethoxyacetophenone (1 eq.) was added to the required benzoyl chloride (1.1 eq.) dissolved in dichloromethane (0.1M). 4-Dimethylaminopyridine (0.1 eq.) and triethylamine (1.5 eq.) were added and the reaction was allowed to stir for 24 hours under a nitrogen atmosphere. Upon completion (TLC – EtOAc, petroleum ether mixtures) the product was acidified with HCl and the organic layer was washed with distilled water, brine and dried (MgSO_4). The solution was evaporated *in vacuo* leaving a crude solid. The crude solid was dissolved in dry THF (0.1M) and NaH (60% in mineral oil, 1.0 eq.) was added and the reaction was heated at reflux for 20 hours. Upon completion (TLC – EtOAc, petroleum ether

mixtures) the solution was washed with HCl and extracted with EtOAc. The organic layer was washed with distilled water, brine and dried (MgSO_4). The solution was evaporated *in vacuo* leaving a crude solid. The crude solid was suspended in conc. H_2SO_4 and acetic acid and this mixture was allowed to stir at reflux for 15 hours. After allowing to cool, the solution was poured onto an ice/water slurry and the resulting crystalline solid was collected using vacuum filtration. The crude solid was suspended in HBr (47-49%) and glacial acetic acid and this mixture heated at reflux for 40 hours. After allowing to cool, the solution was poured onto an ice/water slurry, and following isolation and purification by flash column chromatography, yielded the title compound as a pure solid.

Procedure for the synthesis of 2

2,4,6-Trimethoxybenzoic acid (1.1 g, 5.2 mmol) was dissolved in dichloromethane (65 mL), the reaction flask was purged with nitrogen for 10 minutes and then oxalyl chloride (0.50 mL, 5.7 mmol) was added along with 2 drops of dimethylformamide. The mixture was allowed to react and the progress was monitored by TLC (50% EtOAc in petroleum ether) over the period of an hour until complete. The solvent was removed *in vacuo* to yield a viscous yellow oil (1.4 g, 6 mmol). The crude product was dissolved in dichloromethane (50 mL) and 2'-hydroxyacetophenone (0.66 mL, 5.5 mmol) was added along with triethylamine (1.1 mL) and 4-dimethylaminopyridine (70 mg) and the reaction was allowed to progress overnight at room temperature. The organic layer was washed with NaOH (2 x 25 mL), water (2 x 25 mL) and brine (30 mL), and the solvent was removed *in vacuo* to yield a viscous yellow oil (1.8 g, 5.4 mmol). The flask containing the crude material was purged with nitrogen for ten minutes followed by the addition of anhydrous tetrahydrofuran (50 mL), followed by NaH (60% in mineral oil, 0.22 g, 5.4 mmol) and the reaction heated at 66 °C for 20 hours. The solution was acidified with HCl (250 mL) to yield a pale yellow crystalline precipitate by vacuum filtration (1.12 g, 3.4 mmol). Flash column chromatography (SiO_2 ; ethyl acetate:petroleum ether) yielded the desired rearranged product (0.8 g, 2.5 mmol). H_2SO_4 (5 mL) was added along with CH_3COOH (60 mL) and this was heated to reflux for 6 hours until completion, as determined by TLC. The solution was poured over an ice/water slurry to yield cream-like crystals (0.2 g 0.64 mmol). Hydroiodic acid (5 mL) was added to these crystals along with phenol (3.21 g) and this mixture was heated to 120 °C (bath temperature) for 2 hours. The solution was then poured over an ice/water slurry (300 mL) to yield a pale-cream crystalline solid (20 mg, 0.07 mmol).

4.3 – Kinetics Measurement

rmGPb was purified from rabbit skeletal muscles following the protocol developed by Fischer and Krebs [59], while hGPb was produced as described previously [60]. rmGPa and hGPa were prepared by phosphorylation of rmGPb and hGPb, respectively, using a truncated form of the γ (catalytic) subunit of rabbit skeletal muscle phosphorylase kinase [61]. Kinetic studies were performed at 30 °C in the direction of glycogen synthesis using the method by Saheki et al. [62] for the determination of the released orthophosphate anions. 3 $\mu\text{g/mL}$ rmGPb, rmGPa, or 1 $\mu\text{g/mL}$ hGPa were assayed following an established protocol described previously [63] and various concentrations of inhibitors. All inhibitors were treated as allosteric inhibitors (do not obey Michaelis-Menten model) and hence Hill plots were produced (Figures S1-S3). Inhibition constant (K_i) values were then calculated from the intercept to horizontal axis of the plot of $K_{M(\text{app.})}$ vs [inhibitor] using the non-linear regression program GRAFIT [64].

4.4 – X-ray Crystallography

rmGPb crystals were grown by the batch method as described previously [63]. X-ray crystallographic binding studies were performed by diffusion of **20** (10 mM; 38 h), **43** (10 mM; 24 h), and **52** (10 mM; 47 h) solution in the crystallization media supplemented with 25% (v/v) DMSO in preformed rmGPb crystals at room temperature prior to data collection. X-ray diffraction data were collected using a Cu X-ray microfocus source (Oxford Diffraction SuperNova) equipped with a 4-kappa goniometer and the ATLAS CCD (135 mm) detector at room temperature. X-ray data processing was performed by the program CrystallisPro (Agilent Technologies UK Ltd.) [65]. Scaling and merging of intensities were performed by Aimless and the optimum resolution was selected based on the $CC^{1/2}$ criterion [66]. Crystallographic refinement of the complexes was performed by maximum-likelihood methods using REFMAC [67]. The starting model employed for the refinement of the complexes was the structure of T state rmGPb in complex with a C- β -D-glucopyranosyl triazole inhibitor after the removal of the ligand [68]. Ligand molecule coordinates and topologies were constructed using AceDRG [69] within Coot [70] and they were fitted to the electron density maps after adjustment of their torsion angles. A summary of the data processing and refinement statistics for the inhibitor complex structures is given in Table 3. The validity of the refinement procedure was checked using the PDB_REDO server [71]. As

there were more than five reflections per atom available, both an isotropic and an anisotropic B-factor model were considered, and the isotropic B-factor model was selected based on the Hamilton R ratio test. A TLS model for grouped atom movement with one TLS group was used. The stereochemistry of the protein residues was validated by MolProbity [72]. Accessibility surfaces were calculated by the NACCESS program [73]. Figures were prepared with the CCP4 Molecular Graphics program [74]. The coordinates of the new structures have been deposited with the RCSB Protein Data Bank [75] with codes presented in Table 3.

Table 3. Summary of the diffraction data processing and refinement statistics for the rmGPb complexes. Values in parentheses are for the outermost shell.			
rmGPb complex	20	43	52
<i>Data collection and processing statistics</i>			
Resolution (Å)	13.74 - 2.33	13.67 - 2.38	13.68 – 2.40
Outermost shell (Å)	2.42 - 2.33	2.47 - 2.38	2.49 – 2.40
Reflections measured	175524	200647	164680
Unique reflections	38529 (3446)	34581 (3009)	34314 (3151)
Multiplicity	4.6 (3.1)	5.8 (4.3)	4.8 (3.4)
R_{merge}	0.085 (0.596)	0.095 (0.570)	0.101 (0.623)
Completeness (%)	92.6 (80.3)	90.1 (75.7)	91.2 (80.2)
$\langle I/\sigma I \rangle$	10.7 (1.7)	11.3 (1.9)	10.7 (1.4)
$CC^{1/2}$	0.991 (0.768)	0.995 (0.840)	0.988 (0.754)
<i>Refinement statistics</i>			
R_{cryst}	0.164 (0.256)	0.157 (0.238)	0.168 (0.264)
R_{free}	0.212 (0.294)	0.211 (0.244)	0.211 (0.301)
No of solvent molecules	241	227	244
<i>r.m.s. deviation from ideality in</i>			
bonds (Å)	0.005	0.004	0.003
angles (°)	1.3	1.2	0.9
<i>Average B factor (Å²)</i>			
Protein atoms	28.8	31.5	27.1
Solvent molecules	29.1	29.2	24.2
Inhibitor atoms	49.7	41.4	50.7
PDB entry	6Y5O	6Y55	6Y5C

4.5 – *Ex-vivo* Experiments

Assessment of the efficacy of the potent GP inhibitors to suppress endogenous GP activity in hepatocarcinoma HepG2 cells was performed as previously described [76]. Briefly, human HepG2 hepatocarcinoma cells were maintained in Dulbecco's modified Eagle medium (DMEM), containing 25 mM glucose 10% FBS, 2 mM glutamine, and penicillin/streptomycin, in a humidified atmosphere with 5% CO₂, at 37 °C. For GP activity assessment, cells were seeded in 60 mm culture dishes at a density of 1.5×10^6 cells per dish. After cell attachment (16-18 h), the medium was replaced by serum-free medium containing 10 nM dexamethasone, 25 mM glucose, and 10 nM insulin, and cells were further incubated for 16-18 h to deplete glycogen stores. Cells were then incubated in the absence and presence of **43** at a concentration range of 54.5 to 327 μ M, in serum-free medium supplemented with 5 mM glucose and 10 nM dexamethasone (low-glucose growth medium) for 3 h. Subsequently, cells were washed in phosphate buffer, harvested, centrifuged at 700 X g for 5 min. Cell pellets were resuspended in 20 mM Tris pH 7.5, containing 0.05% Triton and supplemented with 1 mM PMSF. Then, cell lysates were sonicated followed by centrifugation at 12,000 X g at 4° C for 15 min. GP activity was assessed in cleared lysates as described above. Glycogen (1% w/v) and 20mM Glc-1-P were added to the lysates for the assay while GP activity values were normalized against total protein amount, for each condition. The IC₅₀ value of inhibitor **43** was calculated by the % GP activity vs inhibitor concentration diagram using the nonlinear regression program GRAFIT [64].

Acknowledgments

We would like to thank Dr S.E. Zographos and Ms P.G.V. Liggri for their help during X-ray data collection. We acknowledge support of this work by the project “The National Research Infrastructures on integrated biology, drug screening efforts and drug target functional

characterization – INSPIRED-Thessaly” (MIS 5002550) which is implemented under the Action “Reinforcement of the Research and Innovation Infrastructure”, funded by the Operational Programme "Competitiveness, Entrepreneurship and Innovation" (NSRF 2014-2020) and co-financed by Greece and the European Union (European Regional Development Fund). E.K. would like to acknowledge financial support by Greece and the European Union (European Social Fund- ESF) through the Operational Programme «Human Resources Development, Education and Lifelong Learning» in the context of the project “Strengthening Human Resources Research Potential via Doctorate Research” (MIS-5000432), implemented by the State Scholarships Foundation (IKY). The work was also supported in part by the General Secretariat for Research and Technology and the Hellenic Foundation for Research and Innovation (HFRI) under the HFRI PhD fellowship grant to A.G.K. (code: 2246).

Supporting Information

Supplementary data related to this article can be found at XXXX and includes Figures from multiple inhibition studies (Dixon plots); melting point, ^1H -NMR and ^{13}C -NMR, IR and MS characterisation data (purities > 95%) for identified potent inhibitors (**9**, **11**, **20**, **43** and **52**); copies of ^1H -NMR spectra and HPLC chromatograms.

References

- [1] World Health Organisation. www.who.int (15/05/20).
- [2] R.A. DeFronzo, R.C. Bonadonna, E. Ferrannini, Pathogenesis of NIDDM. A balanced overview, *Diabetes Care*, 15 (1992) 318-368.
- [3] M. Roden, E. Bernroider, Hepatic glucose metabolism in humans - its role in health and disease, *Best Practice & Research Clinical Endocrinology & Metabolism*, 17 (2003) 365-383.
- [4] N.G. Oikonomakos, Glycogen phosphorylase as a molecular target for type 2 diabetes therapy, *Curr. Protein. Pept. Sci.*, 3 (2002) 561-586.
- [5] C.E. Zois, A.L. Harris, Glycogen metabolism has a key role in the cancer microenvironment and provides new targets for cancer therapy, *J. Molec. Med.-JMM*, 94 (2016) 137-154.
- [6] L. Xu, H. Sun, Pharmacological manipulation of brain glycogenolysis as a therapeutic approach to cerebral ischemia, *Mini Rev. Med. Chem.*, 10 (2010) 1188-1193.

- [7] T. Guan, Y.S. Qian, X.Z. Tang, M.H. Huang, L.F. Huang, Y.M. Li, H.B. Sun, Maslinic Acid, a Natural Inhibitor of Glycogen Phosphorylase, Reduces Cerebral Ischemic Injury in Hyperglycemic Rats by GLT-1 Up-Regulation, *J. Neurosci. Res.*, 89 (2011) 1829-1839.
- [8] L. Somsák, K. Czifrák, M. Tóth, É. Bokor, E.D. Chrysina, K.M. Alexacou, J.M. Hayes, C. Tiraidis, E. Lazoura, D.D. Leonidas, S.E. Zographos, N.G. Oikonomakos, New inhibitors of glycogen phosphorylase as potential antidiabetic agents, *Curr. Med. Chem.*, 15 (2008) 2933-2983.
- [9] A.L. Kantsadi, A. Apostolou, S. Theofanous, G.A. Stravodimos, E. Kyriakis, V.A. Gorgogietas, D.S. Chatzileontiadou, K. Pegiou, V.T. Skamnaki, D. Stagos, D. Kouretas, A.M. Psarra, S.A. Haroutounian, D.D. Leonidas, Biochemical and biological assessment of the inhibitory potency of extracts from vinification byproducts of *Vitis vinifera* extracts against glycogen phosphorylase, *Food Chem. Toxicol.*, 67 (2014) 35-43.
- [10] E.D. Chrysina, M.N. Kosmopoulou, C. Tiraidis, R. Kardakaris, N. Bischler, D.D. Leonidas, Z. Hadady, L. Somsak, T. Docsa, P. Gergely, N.G. Oikonomakos, Kinetic and crystallographic studies on 2-(beta-D-glucopyranosyl)-5-methyl-1, 3, 4-oxadiazole, -benzothiazole, and -benzimidazole, inhibitors of muscle glycogen phosphorylase b. Evidence for a new binding site, *Protein Sci.*, 14 (2005) 873-888.
- [11] G.A. Stravodimos, B.A. Chetter, E. Kyriakis, A.L. Kantsadi, D.S. Chatzileontiadou, V.T. Skamnaki, A. Kato, J.M. Hayes, D.D. Leonidas, Phytogenic Polyphenols as Glycogen Phosphorylase Inhibitors: The Potential of Triterpenes and Flavonoids for Glycaemic Control in Type 2 Diabetes, *Curr. Med. Chem.*, 24 (2017) 384-403.
- [12] J.M. Hayes, A.L. Kantsadi, D.D. Leonidas, Natural products and their derivatives as inhibitors of glycogen phosphorylase: potential treatment for type 2 diabetes, *Phytochem. Rev.*, 13 (2014) 471-498.
- [13] S. Jakobs, D. Fridrich, S. Hofem, G. Pahlke, G. Eisenbrand, Natural flavonoids are potent inhibitors of glycogen phosphorylase, *Mol. Nutr. Food Res.*, 50 (2006) 52-57.
- [14] A. Kato, N. Nasu, K. Takebayashi, I. Adachi, Y. Minami, F. Sanae, N. Asano, A.A. Watson, R.J. Nash, Structure-activity relationships of flavonoids as potential inhibitors of glycogen phosphorylase, *J. Agric. Food. Chem.*, 56 (2008) 4469-4473.
- [15] O. Kamiyama, F. Sanae, K. Ikeda, Y. Higashi, Y. Minami, N. Asano, I. Adachi, A. Kato, In vitro inhibition of alpha-glucosidases and glycogen phosphorylase by catechin gallates in green tea, *Food Chem.*, 122 (2010) 1061-1066.
- [16] K.E. Tsitsanou, J.M. Hayes, M. Keramioti, M. Mamais, N.G. Oikonomakos, A. Kato, D.D. Leonidas, S.E. Zographos, Sourcing the affinity of flavonoids for the glycogen phosphorylase inhibitor site via crystallography, kinetics and QM/MM-PBSA binding studies: Comparison of chrysin and flavopiridol, *Food Chem. Toxicol.*, 61 (2013) 14-27.
- [17] L. Anila, N.R. Vijayalakshmi, Beneficial effects of flavonoids from *Sesamum indicum*, *Emblica officinalis* and *Momordica charantia*, *Phytother. Res.*, 14 (2000) 592-595.
- [18] M. Ahmad, M.S. Akhtar, T. Malik, A.H. Gilani, Hypoglycaemic action of the flavonoid fraction of *Cuminum nigrum* seeds, *Phytother. Res.*, 14 (2000) 103-106.
- [19] K.C. Ong, H.E. Khoo, Effects of myricetin on glycemia and glycogen metabolism in diabetic rats, *Life Sci.*, 67 (2000) 1695-1705.
- [20] O. Kamiyama, F. Sanae, K. Ikeda, Y. Higashi, Y. Minami, N. Asano, I. Adachi, A. Kato, In vitro inhibition of α -glucosidases and glycogen phosphorylase by catechin gallates in green tea, *Food Chem.*, 122 (2010) 1061-1066.
- [21] N.G. Oikonomakos, J.B. Schnier, S.E. Zographos, V.T. Skamnaki, K.E. Tsitsanou, L.N. Johnson, Flavopiridol inhibits glycogen phosphorylase by binding at the inhibitor site, *J. Biol. Chem.*, 275 (2000) 34566-34573.
- [22] L.J. Hampson, C. Arden, L. Agius, M. Ganotidis, M.N. Kosmopoulou, C. Tiraidis, Y. Elmes, C. Sakarellos, D.D. Leonidas, N.G. Oikonomakos, Bioactivity of glycogen

- phosphorylase inhibitors that bind to the purine nucleoside site, *Bioorg. Med. Chem.*, 14 (2006) 7835-7845.
- [23] N.B. Madsen, S. Shechosky, R.J. Fletterick, Site-Site Interactions in Glycogen Phosphorylase-B Probed by Ligands Specific for Each Site, *Biochem.*, 22 (1983) 4460-4465.
- [24] P.J. Kasvinsky, N.B. Madsen, J. Sygusch, R.J. Fletterick, Regulation of Glycogen Phosphorylase-a by Nucleotide Derivatives - Kinetic and X-Ray Crystallographic Studies, *J. Biol. Chem.*, 253 (1978) 3343-3351.
- [25] N.G. Oikonomakos, L. Somsak, Advances in glycogen phosphorylase inhibitor design, *Curr. Opin. Invest. Drugs*, 9 (2008) 379-395.
- [26] J.J. Irwin, T. Sterling, M.M. Mysinger, E.S. Bolstad, R.G. Coleman, ZINC: A Free Tool to Discover Chemistry for Biology, *J. Chem. Inf. Model.*, 52 (2012). 1757-1768.
- [27] Schrödinger, LLC, New York, NY, 2018.
- [28] M. Feher, Consensus scoring for protein-ligand interactions, *Drug Discov. Today*, 11 (2006) 421-428.
- [29] V. Parmenopoulou, A.L. Kantsadi, V.G. Tsirkone, D.S.M. Chatzileontiadou, S. Manta, S.E. Zographos, C. Molfeta, G. Archontis, L. Agius, J.M. Hayes, D.D. Leonidas, D. Komiotis, Structure based inhibitor design targeting glycogen phosphorylase b. Virtual screening, synthesis, biochemical and biological assessment of novel N-acyl-beta-D-glucopyranosylamines, *Biorg. Med. Chem.*, 22 (2014) 4810-4825.
- [30] D.R. Houston, M.D. Walkinshaw, Consensus Docking: Improving the Reliability of Docking in a Virtual Screening Context, *J. Chem. Inf. Model.*, 53 (2013) 384-390.
- [31] J.M. Hayes, G. Archontis, MM-GB(PB)SA Calculations of Protein-Ligand Binding Free Energies, in: L. Wang (Ed.) *Molecular Dynamics: Studies of Synthetic and Biological Macromolecules*, Published Intech Open, 2012.
- [32] K. Wichapong, A. Rohe, C. Platzer, I. Slynko, F. Erdmann, M. Schmidt, W. Sippl, Application of Docking and QM/MM-GBSA Rescoring to Screen for Novel Myt1 Kinase Inhibitors, *J. Chem. Inf. Model.*, 54 (2014) 881-893.
- [33] P.C. Su, C.C. Tsai, S. Mehboob, K.E. Hevener, M.E. Johnson, Comparison of radii sets, entropy, QM methods, and sampling on MM-PBSA, MM-GBSA, and QM/MM-GBSA ligand binding energies of F-tularensis enoyl-ACP reductase (FabI), *J. Comput. Chem.*, 36 (2015) 1859-1873.
- [34] S. Manta, A. Xipnitou, C. Kiritsis, A.L. Kantsadi, J.M. Hayes, V.T. Skamnaki, C. Lamprakis, M. Kontou, P. Zoumpoulakis, S.E. Zographos, D.D. Leonidas, D. Komiotis, 3'-Axial CH₂OH Substitution on Glucopyranose does not Increase Glycogen Phosphorylase Inhibitory Potency. QM/MM-PBSA Calculations Suggest Why, *Chem. Biol. Drug Des.*, 79 (2012) 663-673.
- [35] J. Begum, V.T. Skamnaki, C. Moffatt, N. Bischler, J. Sarrou, A.L. Skaltsounis, D.D. Leonidas, N.G. Oikonomakos, J.M. Hayes, An evaluation of indirubin analogues as phosphorylase kinase inhibitors, *J. Mol. Graph Model.*, 61 (2015) 231-242.
- [36] E.P. Gillis, K.J. Eastman, M.D. Hill, D.J. Donnelly, N.A. Meanwell, Applications of Fluorine in Medicinal Chemistry, *J. Med. Chem.*, 58 (2015) 8315-8359.
- [37] Y.J. Fang, W.W. Cao, M.M. Xia, S.Y. Pan, X.Y. Xu, Study of Structure and Permeability Relationship of Flavonoids in Caco-2 Cells, *Nutrients*, 9 (2017).
- [38] J.B. Baell, G.A. Holloway, New Substructure Filters for Removal of Pan Assay Interference Compounds (PAINS) from Screening Libraries and for Their Exclusion in Bioassays, *J. Med. Chem.*, 53 (2010) 2719-2740.
- [39] I.H. Segel, *Enzyme Kinetics*, Wiley Interscience, New York, 1993.
- [40] N.B. Madsen, S. Shechosky, R.J. Fletterick, Site-site interactions in glycogen phosphorylase b probed by ligands specific for each site, *Biochemistry*, 22 (1983) 4460-4465.

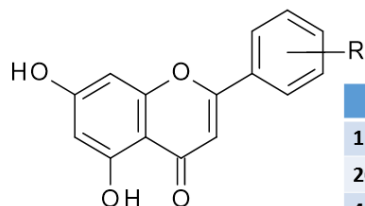
- [41] E. Kyriakis, G.A. Stravodimos, A.L. Kantsadi, D.S. Chatzileontiadou, V.T. Skamnaki, D.D. Leonidas, Natural flavonoids as antidiabetic agents. The binding of gallic and ellagic acids to glycogen phosphorylase b, *FEBS Lett.*, 589 (2015) 1787-1794.
- [42] D. Liebschner, P.V. Afonine, N.W. Moriarty, B.K. Poon, O.V. Sobolev, T.C. Terwilliger, P.D. Adams, Polder maps: improving OMIT maps by excluding bulk solvent, *Acta Crystallogr D Struct. Biol.*, 73 (2017) 148-157.
- [43] G. Cavallo, P. Metrangolo, R. Milani, T. Pilati, A. Priimagi, G. Resnati, G. Terraneo, The Halogen Bond, *Chem. Rev.*, 116 (2016) 2478-2601.
- [44] B.J. Xia, X. Liu, Q. Zhou, Q. Feng, Y. Li, W. Liu, Z.Q. Liu, Disposition of orally administered a promising chemotherapeutic agent flavopiridol in the intestine, *Drug Dev. Ind. Pharm.*, 39 (2013) 845-853.
- [45] E. Harder, W. Damm, J. Maple, C. Wu, M. Reboul, J.Y. Xiang, L. Wang, D. Lupyan, M.K. Dahlgren, J.L. Knight, J.W. Kaus, D.S. Cerutti, G. Krilov, W.L. Jorgensen, R. Abel, R.A. Friesner, OPLS3: A force field providing broad coverage of drug-like small molecules and proteins, *J. Chem. Theory Comput.*, 12 (2016) 281-296.
- [46] C.R. Sondergaard, M.H.M. Olsson, M. Rostkowski, J.H. Jensen, Improved Treatment of Ligands and Coupling Effects in Empirical Calculation and Rationalization of pK(a) Values, *J. Chem. Theory Comput.*, 7 (2011) 2284-2295.
- [47] C.A. Lipinski, F. Lombardo, B.W. Dominy, P.J. Feeney, Experimental and computational approaches to estimate solubility and permeability in drug discovery and development settings, *Adv. Drug Del. Rev.*, 46 (2001) 3-26.
- [48] D.F. Veber, S.R. Johnson, H.Y. Cheng, B.R. Smith, K.W. Ward, K.D. Kopple, Molecular properties that influence the oral bioavailability of drug candidates, *J. Med. Chem.*, 45 (2002) 2615-2623.
- [49] L.L.C. Schrodinger, *Modeling Software Suite*, in, New York, 2015.
- [50] R.A. Friesner, J.L. Banks, R.B. Murphy, T.A. Halgren, J.J. Klicic, D.T. Mainz, M.P. Repasky, E.H. Knoll, M. Shelley, J.K. Perry, D.E. Shaw, P. Francis, P.S. Shenkin, Glide: a new approach for rapid, accurate docking and scoring. 1. Method and assessment of docking accuracy, *J. Med. Chem.*, 47 (2004) 1739-1749.
- [51] Y. Zhao, D.G. Truhlar, The M06 suite of density functionals for main group thermochemistry, thermochemical kinetics, noncovalent interactions, excited states, and transition elements: two new functionals and systematic testing of four M06-class functionals and 12 other functionals, *Theor. Chem. Acc.*, 120 (2008) 215-241.
- [52] P.J. Hay, W.R. Wadt, Abinitio Effective Core Potentials for Molecular Calculations - Potentials for K to Au Including the Outermost Core Orbitals, *J. Chem. Phys.*, 82 (1985) 299-310.
- [53] W.J. Hehre, R. Ditchfield, J.A. Pople, Self-Consistent Molecular-Orbital Methods .12. Further Extensions of Gaussian-Type Basis Sets for Use in Molecular-Orbital Studies of Organic-Molecules, *J. Chem. Phys.*, 56 (1972) 2257-2261.
- [54] G.A. Kaminski, R.A. Friesner, J. Tirado-Rives, W.L. Jorgensen, Evaluation and reparametrization of the OPLS-AA force field for proteins via comparison with accurate quantum chemical calculations on peptides, *J. Phys. Chem. B*, 105 (2001) 6474-6487.
- [55] J.M. Hayes, J.C. Greer, D.A. Morton-Blake, A force-field description of short-range repulsions for high density alkane molecular dynamics simulations, *J. Comput. Chem.*, 25 (2004) 1953-1966.
- [56] B. Marten, K. Kim, C. Cortis, R.A. Friesner, R.B. Murphy, M.N. Ringnalda, D. Sitkoff, B. Honig, New model for calculation of solvation free energies: Correction of self-consistent reaction field continuum dielectric theory for short-range hydrogen-bonding effects, *J. Phys. Chem.*, 100 (1996) 11775-11788.

- [57] E. Harder, W. Damm, J. Maple, C.J. Wu, M. Reboul, J.Y. Xiang, L.L. Wang, D. Lupyan, M.K. Dahlgren, J.L. Knight, J.W. Kaus, D.S. Cerutti, G. Krilov, W.L. Jorgensen, R. Abel, R.A. Friesner, OPLS3: A Force Field Providing Broad Coverage of Drug-like Small Molecules and Proteins, *J. Chem. Theory Comput.*, 12 (2016) 281-296.
- [58] Y. Li, B.T. Sutch, H.H. Bui, T.K. Gallaher, I.S. Haworth, Modeling of the Water Network at Protein-RNA Interfaces, *J. Chem. Inf. Model.*, 51 (2011) 1347-1352.
- [59] E.H. Fischer, E.G. Krebs, Muscle Phosphorylase-B, *Methods Enzymol.*, 5 (1962) 369-373.
- [60] E. Kyriakis, T.G.A. Solovou, S. Kun, K. Czifrak, B. Szocs, L. Juhasz, E. Bokor, G.A. Stravodimos, A.L. Kantsadi, D.S.M. Chatzileontiadou, V.T. Skamnaki, L. Somsak, D.D. Leonidas, Probing the beta-pocket of the active site of human liver glycogen phosphorylase with 3-(C-beta-D-glucopyranosyl)-5-(4-substituted-phenyl)-1, 2, 4-triazole inhibitors, *Bioorg. Chem.*, 77 (2018) 485-493.
- [61] J.M. Hayes, V.T. Skamnaki, G. Archontis, C. Lamprakis, J. Sarrou, N. Bischler, A.L. Skaltsounis, S.E. Zographos, N.G. Oikonomakos, Kinetics, in silico docking, molecular dynamics, and MM-GBSA binding studies on prototype indirubins, KT5720, and staurosporine as phosphorylase kinase ATP-binding site inhibitors: the role of water molecules examined, *Proteins*, 79 (2011) 703-719.
- [62] S. Saheki, A. Takeda, T. Shimazu, Assay of inorganic phosphate in the mild pH range, suitable for measurement of glycogen phosphorylase activity, *Anal. Biochem.*, 148 (1985) 277-281.
- [63] T. Fischer, S.M. Koulas, A.S. Tsagkarakou, E. Kyriakis, G.A. Stravodimos, V.T. Skamnaki, P.G.V. Liggri, S.E. Zographos, R. Riedl, D.D. Leonidas, High consistency of structure-based design and X-Ray crystallography: design, synthesis, kinetic evaluation and crystallographic binding mode determination of biphenyl-N-acyl- β -D-glucopyranosylamines as glycogen phosphorylase inhibitors, *Molecules*, 24 (2019) 1322.
- [64] R.J. Leatherbarrow, GraFit Version 6.0. Erithacus Software, Staines, UK., in, 2007.
- [65] Agilent Technologies UK Ltd, CrysAlisPro Software system, in, Oxford, U.K., 2011.
- [66] P.R. Evans, G.N. Murshudov, How good are my data and what is the resolution?, *Acta Crystallogr. D Biol. Crystallogr.*, 69 (2013) 1204-1214.
- [67] G.N. Murshudov, P. Skubak, A.A. Lebedev, N.S. Pannu, R.A. Steiner, R.A. Nicholls, M.D. Winn, F. Long, A.A. Vagin, REFMAC5 for the refinement of macromolecular crystal structures, *Acta Crystallogr. D Biol. Crystallogr.*, 67 (2011) 355-367.
- [68] A.L. Kantsadi, G.A. Stravodimos, E. Kyriakis, D.S.M. Chatzileontiadou, T.G.A. Solovou, S. Kun, E. Bokor, L. Somsak, D.D. Leonidas, van der Waals interactions govern C-beta-D-glucopyranosyl triazoles' nM inhibitory potency in human liver glycogen phosphorylase, *J. Struct. Biol.*, 199 (2017) 57-67.
- [69] F. Long, R.A. Nicholls, P. Emsley, S. Graaeulis, A. Merkys, A. Vaitkus, G.N. Murshudov, AceDRG: a stereochemical description generator for ligands, *Acta Crystallogr. D Struct. Biol.*, 73 (2017) 112-122.
- [70] P. Emsley, K. Cowtan, Coot: model-building tools for molecular graphics, *Acta Crystallogr. D Biol. Crystallogr.*, 60 (2004) 2126-2132.
- [71] R.P. Joosten, F. Long, G.N. Murshudov, A. Perrakis, The PDB_REDO server for macromolecular structure model optimization, *I.U.Cr.J.*, 1 (2014) 213-220.
- [72] V.B. Chen, W.B. Arendall, 3rd, J.J. Headd, D.A. Keedy, R.M. Immormino, G.J. Kapral, L.W. Murray, J.S. Richardson, D.C. Richardson, MolProbity: all-atom structure validation for macromolecular crystallography, *Acta Crystallogr. D Biol. Crystallogr.*, 66 (2010) 12-21.
- [73] S.J. Hubbard, J.M. Thornton, NACCESS. Department of Biochemistry and Molecular Biology, University College, London, (1993).

- [74] S. McNicholas, E. Potterton, K.S. Wilson, M.E. Noble, Presenting your structures: the CCP4mg molecular-graphics software, *Acta Crystallogr. D Biol. Crystallogr.*, 67 (2011) 386-394.
- [75] H.M. Berman, J. Westbrook, Z. Feng, G. Gilliland, T.N. Bhat, H. Weissig, I.N. Shindyalov, P.E. Bourne, The Protein Data Bank, *Nucleic Acids Res.*, 28 (2000) 235-242.
- [76] A.L. Kantsadi, J.M. Hayes, S. Manta, V.T. Skamnaki, C. Kiritsis, A.M. Psarra, Z. Koutsogiannis, A. Dimopoulou, S. Theofanous, N. Nikoleousakos, P. Zoumpoulakis, M. Kontou, G. Papadopoulos, S.E. Zographos, D. Komiotis, D.D. Leonidas, The sigma-hole phenomenon of halogen atoms forms the structural basis of the strong inhibitory potency of C5 halogen substituted glucopyranosyl nucleosides towards glycogen phosphorylase b, *ChemMedChem*, 7 (2012) 722-732.

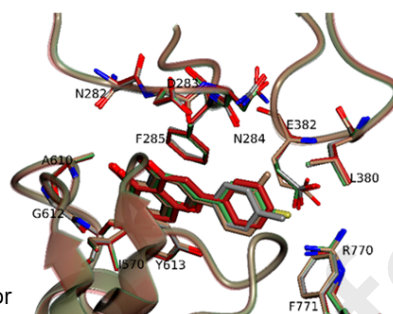
Highlights.

- Synthetic flavonoids synthesized based on QM/MM-PBSA binding free energy predictions
- Three compounds revealed as more potent than any natural flavonoid GP inhibitor
- Binding is synergistic with glucose and could be regulated by blood glucose levels
- Compound **43** an effective inhibitor of glycogenolysis in hepatocytes ($IC_{50} = 64 \mu\text{M}$)
- X-ray crystallography studied the interactions responsible for the observed potencies

Potent synthetic flavonoid inhibitors of glycogen phosphorylase (GP)

	R
11	Cl(m); F(p)
20	F(p)
43	Me(m)

- **11**, **20** and **43** with K_i s < 4 μ M for three GP isoforms
- More potent than any reported natural flavonoid inhibitor
- **43** an effective inhibitor of glycogenolysis in hepatocytes (IC_{50} = 64 μ M)



Binding exclusively at the inhibitor site

Declaration of interests

☒ The authors declare that they have no known competing financial interests or personal relationships that could have appeared to influence the work reported in this paper.

☐ The authors declare the following financial interests/personal relationships which may be considered as potential competing interests: