

Chemical Science

Accepted Manuscript



This article can be cited before page numbers have been issued, to do this please use: F. Reiß, M. Reiß, J. Bresien, A. Spannenberg, H. Jiao, W. Baumann, P. Arndt and T. Beweries, *Chem. Sci.*, 2019, DOI: 10.1039/C9SC01002E.



This is an Accepted Manuscript, which has been through the Royal Society of Chemistry peer review process and has been accepted for publication.

Accepted Manuscripts are published online shortly after acceptance, before technical editing, formatting and proof reading. Using this free service, authors can make their results available to the community, in citable form, before we publish the edited article. We will replace this Accepted Manuscript with the edited and formatted Advance Article as soon as it is available.

You can find more information about Accepted Manuscripts in the [author guidelines](#).

Please note that technical editing may introduce minor changes to the text and/or graphics, which may alter content. The journal's standard [Terms & Conditions](#) and the ethical guidelines, outlined in our [author and reviewer resource centre](#), still apply. In no event shall the Royal Society of Chemistry be held responsible for any errors or omissions in this Accepted Manuscript or any consequences arising from the use of any information it contains.

ARTICLE

1-Titanacyclobuta-2,3-diene – an Elusive Four-membered Cyclic Allene

Fabian Reiß,^a Melanie Reiß,^a Jonas Bresien,^b Anke Spannenberg,^a Haijun Jiao,^a Wolfgang Baumann,^a Perdita Arndt^a and Torsten Beweries^{*a}Received 00th January 20xx,
Accepted 00th January 20xx

DOI: 10.1039/x0xx00000x

The synthesis of an unusual 1-metalla-2,3-cyclobutadiene complex [*rac*-(ebthi)Ti(Me₃SiC₃SiMe₃)] (*rac*-ebthi = *rac*-1,2-ethylene-1,1'-bis(η⁵-tetrahydroindenyl)), a metallacyclic analogue of a non-existent four-membered 1,2-cyclobutadiene is described. By variation of the cyclopentadienyl ligand of the titanocene precursor it was possible to stabilise this highly exotic compound which selectively reacts with ketones and aldehydes to yield enynes by oxygen transfer to titanium. Analysis of the bonding and electronic structure of the metallacycle shows that the complex is best described as an unusual antiferromagnetically coupled biradicaloid system, possessing a formal Ti(III) centre coordinated with a monoanionic radical ligand.

Introduction

Driven by the “desire to make the molecule that violates the norm”¹ chemists have always looked into possibilities to stabilise exotic molecules and explore the reasons for its existence and reactivities. In this respect, a commonly used approach is the incorporation of unsaturation into cyclic structures that increases the ring strain and therefore in principle decreases the likeliness of its existence.² For a long time, organometallic chemists have investigated metallacycles, both, with respect to their unusual coordination environments as well as potential applications in stoichiometric^{3,4} and catalytic applications.^{4,5} In the past, a number of *five-membered* metallacycles based on early and late transition metals have been reported that possess rather unusual structural motifs, including Rosenthal’s 1-metallacyclopenta-2,3,4-trienes⁶, Suzuki’s 1-metallacyclopent-3-ynes⁷, Erker’s 1-metallacyclopenta-3,4-dienes⁸ (all based on group 4 metals) or Xi’s metalloles (Rh, Pd, Pt).⁹ Intuitively, the synthesis of *four-membered* and highly unsaturated metallacycles should be even more challenging and to date a common approach to stabilise such structures is the incorporation of heteroatoms into the ring system.¹⁰ Also, the parent 1,2-cyclobutadiene has a calculated strain energy of 74.9 kcal·mol⁻¹,¹¹ thus reflecting the instability and the difficulty in isolating a molecule of this type. The chemistry of 1-metallacyclobuta-2,3-dienes has been investigated in the past as such structures play a role for

catalyst deactivation in alkyne metathesis. Schrock reported on two structurally characterised examples of “all-C-deprotiometallacyclobutadienes”

Mo{C₃-(tBu)₂}[OCH(CF₃)₂]₂(py)₂ (**A**)¹² and [CpW{C₃(tBu)₂}-Cl] (**B**)¹³ (Cp = η⁵-cyclopentadienyl) that were formed during metathesis of terminal alkynes (Figure 1). Later, Fürstner (**C**) and – very recently Tamm (**D**) – observed the formation of 1-molybdacyclobuta-2,3-dienes as a product of reaction of an alkylidene catalyst with a terminal alkyne.¹⁴

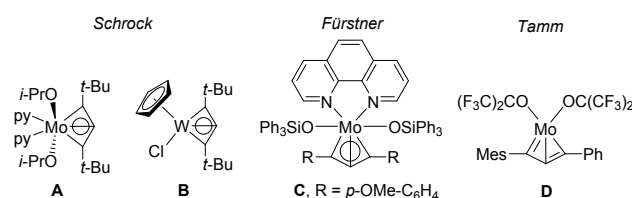


Figure 1. Structurally characterised 1-metallacyclobuta-2,3-diene complexes. Bonding situations in the metallacycle are depicted as shown in the literature.

To further explore the frontiers of the chemistry of group 4 metallacycles Jemmis, Schulz and Rosenthal have computationally explored the possibilities to stabilise planar 1-metalla-2,3-cyclobutadienes and found that the incorporation of electron-donating substituents at α-carbon atoms could be beneficial.¹¹ Later, our group has attempted to synthesise such structures by coupling of alkynyl and isonitrile ligands at titanocene, unfortunately this approach only resulted in redox-disproportionation of the Ti centre.¹⁵ Also, deprotonation of α-CH₂SiMe₃ and α-CH₂N(SiMe₃)₂ substituted titanocene alkyne complexes was found to be unsuccessful.¹⁶ A more promising approach appeared to be the initial construction of a C₃ framework prior to coordination to the metal. We have thus revisited and optimised the synthesis of a previously reported 1,3-dithioallene precursor [Li₂(Me₃SiC₃SiMe₃)]¹⁷ and reacted

^a Leibniz-Institut für Katalyse e.V. an der Universität Rostock, Albert-Einstein-Str. 29a, 18059 Rostock, Germany.

^b Abteilung für Anorganische Chemie, Institut für Chemie, Universität Rostock, Albert-Einstein-Straße 3a, D-18059 Rostock, Germany.

Electronic Supplementary Information (ESI) available: experimental, spectroscopic, crystallographic and computational details (PDF); xyz coordinates. See DOI: 10.1039/x0xx00000x

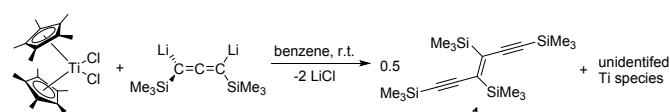


this with $[\text{Cp}_2\text{ZrCl}_2]$. To our surprise, we obtained two unusual allenediide bridged dizirconocene complexes $[\text{Cp}_2\text{Zr}(\text{RC}_3\text{R})_2\text{ZrCp}_2]$ and $[\text{Cp}_2\text{Zr}(\text{Cl})\text{RC}_3\text{R}(\text{Cl})\text{ZrCp}_2]$ ($\text{R} = \text{SiMe}_3$)¹⁸, the latter being a promising precatalyst for amine borane dehydropolymerisation.¹⁹ Interestingly, we were able to show that the dizirconacyclooctatetraene $[\text{Cp}_2\text{Zr}(\text{RC}_3\text{R})_2\text{ZrCp}_2]$ degrades under mass spectrometry conditions into the desired mononuclear 1-zirconacyclobuta-2,3-diene compound. In this contribution, we report on the synthesis and characterisation of the first 1-metalla-2,3-cyclobutadiene complex of a group 4 metal as well as the reactivity of this unusual complex.

Results and Discussion

Reaction of $[\text{Cp}_2\text{TiCl}_2]$ and $[\text{Cp}^*_2\text{TiCl}_2]$ with the 1,3-dilithioallene precursor

To evaluate the influence of the metal centre we first adapted our previously reported procedure¹⁸ and reacted $[\text{Cp}_2\text{TiCl}_2]$ with $[\text{Li}_2(\text{Me}_3\text{SiC}_3\text{SiMe}_3)]$. ¹H NMR analysis of an aliquot taken after a reaction time of 16 hours at room temperature shows the formation of several Cp containing products along with a large number of resonances in the SiMe₃ region of the spectrum, out of which we identified the coupling product **1** (cf. p S4, Figure S1). Even at low temperatures (-40 °C), only similar product mixtures could be isolated. We next employed more electron-donating, sterically more demanding $[\text{Cp}^*_2\text{TiCl}_2]$ ($\text{Cp}^* = \eta^5\text{-pentamethylcyclopentadienyl}$) and observed a slow colour change from red to brown. NMR analysis of the reaction mixture shows the formation of unidentified titanocene species along with the coupling product **1** as the main species, which can be isolated after column chromatographic workup in 90% yield (Scheme 1). The formation of **1** can be formally seen as the dimerisation of two carbenes in the coordination sphere of Ti. A similar type of carbene coupling to form alkynyl functionalised symmetrical olefins was reported before by Casey and co-workers for a Re system.²⁰ Also, the formation of Ph_4C_6 by thermal/radical degradation of 1,3-bis(alkylseleno)allenes supports this proposal.²¹



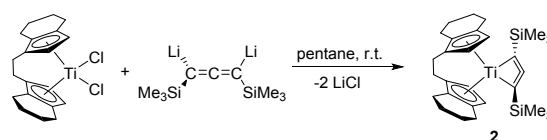
Scheme 1. Reaction of $[\text{Cp}^*_2\text{TiCl}_2]$ with $[\text{Li}_2(\text{Me}_3\text{SiC}_3\text{SiMe}_3)]$.

In a previous study we had computed the isodesmic exchange reaction of $\text{Cp}^*_2\text{TiMe}_2$ and the allene precursor $\text{Me}(\text{Me}_3\text{Si})\text{C}_3(\text{SiMe}_3)\text{Me}$ to form the desired four-membered metallacycle and ethane. This reaction is slightly exergonic and thus in principle feasible ($\Delta G = -1.75 \text{ kcal}\cdot\text{mol}^{-1}$,²²). This approach was chosen as a theoretical model for salt metathesis using a 1,3-dilithioallene to avoid solubility effects and cluster formation that would complicate computational analysis. For the reaction of $[\text{Cp}_2\text{TiCl}_2]$ with $[\text{Li}_2(\text{Me}_3\text{SiC}_3\text{SiMe}_3)]$ at low temperature we proposed formation of a 1-titana-2,3-cyclobutadiene (vide supra), which is in accordance with the computed exergonic reaction of Cp_2TiMe_2 and

$\text{Me}(\text{Me}_3\text{Si})\text{C}_3(\text{SiMe}_3)\text{Me}$ ($\Delta G = -11.77 \text{ kcal}\cdot\text{mol}^{-1}$). The fact that a coupling reaction leading to **1** was observed in reactions with Cp and Cp* complexes indicates that at some stage of the reaction the interaction of an intermediately formed C₃ framework with the Ti centre occurred. *ansa*-Cp complexes in many cases show reactivities that are comparable to Cp analogues and furthermore exhibit additional stabilisation of the metallocene through the bridging unit. Subtle differences in reactivity (e.g. formation of different products or faster conversion) are often referred to as the *ansa* effect.²³ In line with this, the reaction of $[\text{rac}(\text{-ebthi})\text{TiMe}_2]$ and $\text{Me}(\text{Me}_3\text{Si})\text{C}_3(\text{SiMe}_3)\text{Me}$ is even more thermodynamically favourable ($\Delta G = -16.60 \text{ kcal}\cdot\text{mol}^{-1}$).

Synthesis and characterisation of 1-titanacyclobuta-2,3-diene (**2**)

We have thus next reacted $[\text{rac}(\text{-ebthi})\text{TiCl}_2]$ and $[\text{Li}_2(\text{Me}_3\text{SiC}_3\text{SiMe}_3)]$ at room temperature in pentane (Scheme 2) and observed formation of a deep red solution, from which compound **2** could be isolated as red crystals after removal of LiCl. Moderate yields of **2** (58%) can be explained by the formation of **1** as a byproduct which was identified by NMR spectroscopy and this nicely demonstrates the subtle differences in reactivity along the series Cp - *rac*(-ebthi) - Cp*. Single crystals suitable for X-ray analysis were obtained from a saturated pentane solution at room temperature.



Scheme 2. Reaction of $[\text{rac}(\text{-ebthi})\text{TiCl}_2]$ with $[\text{Li}_2(\text{Me}_3\text{SiC}_3\text{SiMe}_3)]$ and formation of **2**.

Compound **2** shows the expected characteristic ¹H NMR signals at 0.35, 5.27, and 7.22 ppm, corresponding to the SiMe₃ groups and the Cp protons of the *rac*(-ebthi) ligand. The ¹³C NMR spectra show two signals at low field that we assign to the internal (δ 134.2 ppm) and metal-bound carbon atoms (δ 213.8 ppm) of the metallacycle. Notably, these values strongly differ from those found for the previously reported Mo and W complexes, pointing towards structural differences such as the absence of a M-C2 interaction ($\Delta\delta > 56 \text{ ppm}$, Table 1).

Table 1. Comparison of ¹³C NMR values for metallacyclic units in complexes **2**, **A**, **B**, and **C**.

	A ¹³	B ¹²	C ¹⁴	2	$[\text{Li}_2(\text{Me}_3\text{SiC}_3\text{SiMe}_3)]$ ¹⁸
M-C	220.4	257	205.3	213.8	37.8, 44.6 ^[a]
C-C-C	197.1	196	190.6	134.2	174.1

[a] tetrameric compound in the solid state, dynamic behaviour in solution leads to two inequivalent ¹³C shifts.

The molecular structure of compound **2** (Figure 2) shows the bent metallocene fragment as part of the four-membered ring system. Ti-C bond lengths are significantly longer than typical single bonds (Ti1-C1 2.229(1), Ti1-C3 2.235(2); $\Sigma r_{\text{cov}} = 2.11 \text{ \AA}^{24}$). That the Ti1-C2 distance (2.178(1) Å) is shorter than Ti1-C1/C3 indicates that the C₃ unit is only slightly bent, which is



corroborated by the angle C1-C2-C3 of 150.1(2)°. Compared to the Mo and W complexes this C₃ unit in **2** is less bent (cf. 130°–135°). The C-C bond distances are in the range of double bonds (C1-C2 1.303(2), C2-C3 1.308(2) Å; $\Sigma r_{\text{cov}} = 1.34 \text{ Å}^{24}$) and shorter compared to values found for Mo and W complexes, most likely due to less electron donation to the metal centre. While the Ti1-C1-C2-C3 unit is planar (1.1(3)°) the SiMe₃ groups are located above and below this plane, which is in contrast to the structural features reported for group 6 metallocyclobutadienes (cf. p. S15 Table S4₁). This description of a C=C=C unit in **2**, is supported by the observed in-phase (1344 cm⁻¹) and out-of-phase (1729 cm⁻¹) vibrations which are in good agreement with calculated values (1343 cm⁻¹/1787 cm⁻¹).²²

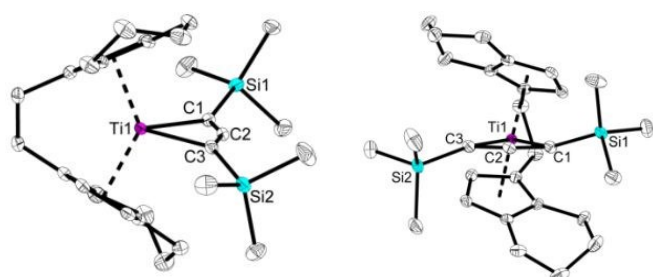


Figure 2. Two views of the molecular structure of complex **2**. Thermal ellipsoids correspond to 30% probability. Hydrogen atoms are omitted for clarity.

Analysis of the structure and bonding of **2**

To obtain a better understanding of the bonding situation in 1-titanacyclobuta-2,3-diene **2**, a series of density functional theory (DFT) and wave function theory (WFT) calculations were performed. Firstly, the structure of **2** was optimised at the BP86²⁵/LANL2DZ²⁶/TZVP²⁷ level of theory, showing good agreement with structural data from single-crystal X-ray diffraction (cf. p. S48, Table S12). At this point we noticed a small energy gap between the HOMO and LUMO (1.0 eV), which can be indicative of substantial biradical character. To further evaluate this, the optimised structure was used for several single point calculations employing the pure and hybrid density functionals (DF) BP86 and B3LYP^{25,28} to calculate the Kohn-Sham (KS) orbitals, as well as HF to compute the canonical MOs. All (KS) wave functions were tested with respect to RHF/UHF or RKS/UKS instabilities, in order to analyse the biradical character of Ti complex **2**. While the KS wave function based on the pure DF (BP86) showed no instabilities, the hybrid DF (B3LYP) and HF solution exhibited a low-lying, “broken-symmetry” open-shell singlet state. This kind of behaviour is often observed if the biradical character is not too large,²⁹ since part of the non-dynamic correlation is treated by the exchange-correlation functional of the (pure) density functional. Mixing in exact exchange reduces the amount of correlation treated by the DF and thus the “broken-symmetry” solution becomes more stable. While the structures that were optimised using the BP86 functional show good agreement with experimental structures (Table S12), the electronic energy should only be considered as a rough approximation due to incorrect treatment of the non-dynamic

correlation. Therefore we employed the Complete Active Space (CAS(8,9)) SCF method³⁰ to obtain a multi-determinant open-shell singlet wave function and describe the bonding situation in **2** appropriately. This calculation determined the biradical character of **2** with $\beta = 28\%$,^{31,32} and identified the largest contributions to the overall wave function as the two determinants placing two electrons either in the formal HOMO (ϕ_4) or LUMO (ϕ_5 , Figure 3).

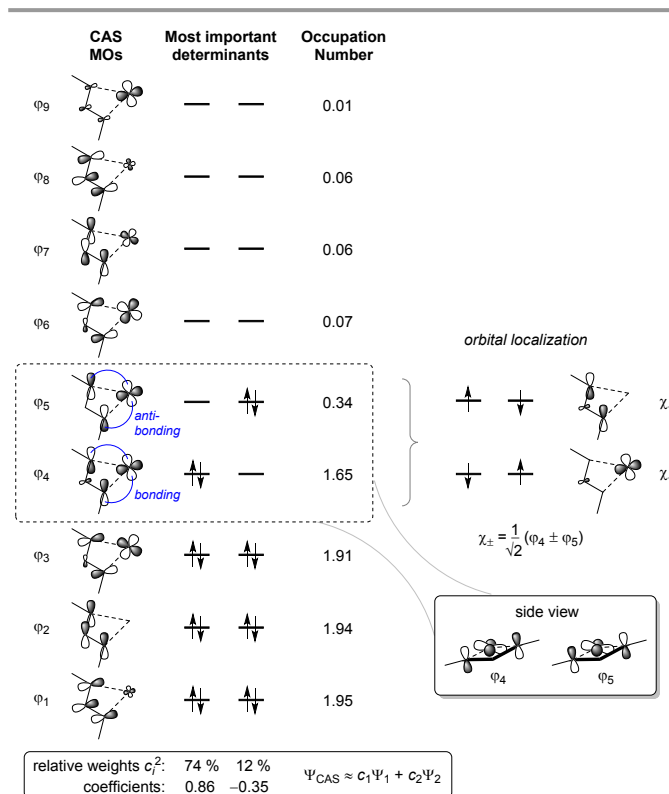
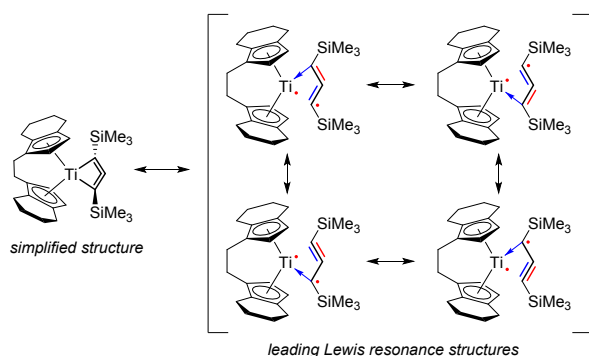


Figure 3. Schematic depiction of the active orbitals of a CAS(8,9) calculation. Only contributions to the wave function with relative weights > 1 % are shown. The orbital localisation scheme indicates that one of the radical centres is localised at Ti, while the other is delocalised across the C₃ backbone.

The singlet state is calculated to be the ground state ($\Delta E_{\text{S-T}} = -9.3 \text{ kcal/mol}$); i.e. the radical centres are antiferromagnetically coupled and the calculated exchange coupling constant³³ is $2J = E_{\text{S}} - E_{\text{T}} = -3260 \text{ cm}^{-1}$. The radical centres are localised at Ti and on the C₃ backbone of the ligand (Figure 3, right). Therefore, the electronic structure can be understood as a complex possessing a formal Ti(III) fragment and an organic radical, where the “free” electrons are antiferromagnetically coupled. As a consequence, no classical Ti(III) chemistry would be expected as the complex is a singlet. In conjunction with results from Natural Bond Orbital (NBO) analysis, the electronic situation is best described by the main Lewis-type resonance structures depicted on the right side of Scheme 3. Note that the electrons in both the formal π_x and π_z bonding systems of the formal propadienyliide ligand are delocalized across the C₃ unit and that each of these π -bonding systems can be interpreted independently of the other, resulting in a variety of different Lewis resonance structures (see also Figure S50). The calculated natural charge of the



$C_3(SiMe_3)_2$ ligand amounts to $-0.39 e$ (CAS) or $-0.64 e$ (BP86), which is in the expected range of a formally anionic ligand. For a more detailed discussion of the CAS wave function and bonding situation, please refer to the Supporting Information, pp. S49.



Scheme 3. Main resonance structures which best describe the bonding situation in **2** as singlet biradical. The antiferromagnetically coupled electron at the ligand is delocalised within the out-of-plane π_x bonding system (red), while the in-plane π_y orbitals (blue) contribute to the C–Ti bonding interactions.

In order to investigate the topology of the electron density, we performed a QT-AIM analysis.^{34,35} This revealed two Ti–C bond paths (Ti1–C1 and Ti1–C3), in agreement with the Lewis resonance scheme (Scheme 3). Despite the short interatomic distance between Ti1 and C2, there is no strong bonding interaction between those atoms; on the contrary, a ring critical point is found near the centre of the TiC_3 ring system. Moreover, the Laplacian of the electron density $\nabla^2 r$ indicates that the Ti–C bonds are strongly polarised towards the C atoms (Figure 4).

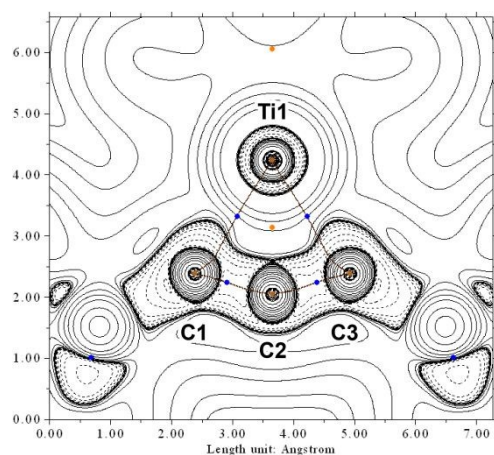


Figure 4. Contour plot of the Laplacian of the electron density $\nabla^2 r$ of Ti complex **2** in the TiC_3 ring plane. Dashed lines indicate negative (local charge concentration), solid lines indicate positive values (local charge depletion). The Laplacian plot is overlaid with the molecular graph from QT-AIM analysis. Brown lines indicate bonding paths, blue dots correspond to bond critical points, orange points indicate ring critical points. Density from CAS(8,9)/def2-TZVP calculation.

The densities obtained from CAS(8,9) and BP86 calculations are similar, indicating that the pure DFT method is suitable to approximately describe the electron density despite its single-

determinant character (*cf.* p S53, Figure S52). The results from QT-AIM analysis are corroborated by ELF analysis (*cf.* p S53, Figure S53). There is no localised electron density in the valence region of C2 directed towards Ti1, whereas the bonding electrons between C1/C3 and Ti are localised in the same area as indicated by the Laplacian of the electron density. Notably, there is no localised electron density around C2 pointing away from Ti1 either, *i.e.* there is no lone pair of electrons at the central carbon atom. Consequently, the electronic structure of the C_3 scaffold is different from that of structurally related bent allenes, such as so-called “carbodicarbenes” (*cf.* p S54, Figure S54).³⁶

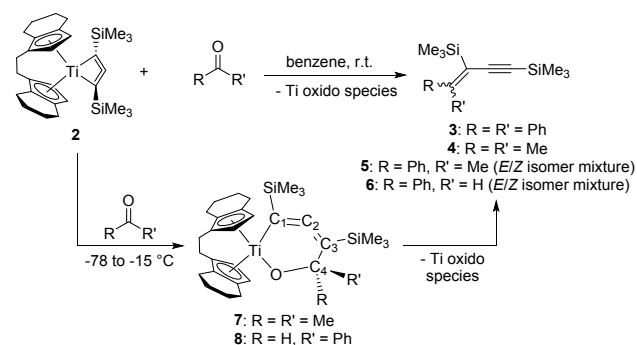
With these results in mind we calculated the biradical character of the hypothetical analogous Cp ($\beta = 30\%$) and Cp* ($\beta = 74\%$) substituted complexes and found that the singlet-triplet gap and therefore the biradical character greatly depend on the pyramidalisation (hybridisation) of the carbon atoms C1 and C3 of the TiC_3 ring. Since the coordination environment around C1/C3 is nearly planar in $[Cp^*_2Ti(Me_3SiC_3SiMe_3)]$, it shows the highest biradical character. This trend is in agreement with previous computations¹¹ and provides a possible explanation for the selective formation of **1** over a highly reactive planar biradical complex.

Reactions of **2** with carbonyl compounds

To gain first insights into the reactivity of the isolable and unusual biradical $[rac-(ebthi)Ti(Me_3SiC_3SiMe_3)]$ complex we have performed stability tests. Therefore, we exposed solutions of **2** to air and moisture and found that in both cases, slow formation of the propyne $Me_3SiC_2CH_2SiMe_3$ takes place (see Supporting Information for details). To evaluate whether our compound shows radical-type reactivity despite its biradical character, we have added 9,10-dihydroanthracene as a potential radical trap, however, we observed no conversion at room temperature. In reactions with TEMPO ((2,2,6,6-tetramethylpiperidin-1-yl)oxyl) formation of ill-defined reaction mixtures that contain Ti(III) species takes place.

We next focused on classical biradical-type reactions that are also known for inorganic cyclic four-membered 1,3-biradical systems.³⁷ In the reaction with CO_2 , a colour change from red to teal and finally brownish was observed. The NMR spectra of this sample indicate the formation of three so far unidentified organometallic products and thus suggest a high reactivity towards carbonyl substrates. However, these species could not be separated and characterised yet. Based on this observation we have next evaluated the reactivity of **2** towards simple carbonyl compounds benzophenone, acetone, acetophenone, and benzaldehyde (Scheme 4).





Scheme 4. Reaction of **2** with ketones to yield enynes **3**, **4**, **5** and **6**.

NMR analysis of reaction solutions showed that in all cases formation of enynes occurred by formal oxygen transfer to Ti and coupling of the remaining C₁ unit with the C₃ moiety of the metallacycle. The molecular structure of compound **3** (cf. p S14, Figure S7) confirms the assignment as an enyne.

The nature of the Ti species formed by oxygen transfer could not be unequivocally clarified; however, formation of a Ti oxido species is likely. It should however be noted that such species require either kinetic stabilisation by bulky Cp ligands³⁸, or additional Lewis bases such as pyridines³⁹ to persist as monomeric well-defined complexes. Monitoring of the reaction of **2** and acetone at low temperature, *i.e.* slow warming from -78°C, showed that the red colour of **2** is retained up to a temperature of -15°C, at which point the solution turned teal. After workup at low temperature, the dark-teal residue was analysed by low-temperature NMR spectroscopy. ¹³C NMR spectra showed four new resonances due to a new metallacyclic species **7** at 179.7 (C2), 151.9 (C1), 109.4 (C3), and 90.3 ppm (C4), thus suggesting that the well-known insertion of the ketone⁴⁰ is the first step of C-C bond formation that ultimately yields the enyne (Scheme 4). It should however be noted that this reaction of carbonyl compounds with **2** can also be regarded as an addition reaction to a 1,2-biradical with addition of the C=O bond to both radical centres. Looking at the nature of the reaction products and possible intermediates this cannot be distinguished from classical Ti(IV) diyl insertion reactivity.

Remarkably, in a similar low temperature experiment with **2** and benzaldehyde we detected only the intermediate species **8** which is consistent with a structure of the type **7** (¹³C NMR of **8**: 179.5 (C2), 154.2 (C1), 109.1 (C3), 91.8 ppm (C4)). Thermodynamic calculations reveal intermediate **8** as the sterically less stressed isomer which is preferred by -5.2 kcal/mol (cf. p S42, Figure S48).²² This [3+1] coupling mode is rather unusual for a 1,3-enyne as these compounds are typically prepared by dimerisation of terminal alkynes⁴¹, or by Pd catalysed Sonogashira coupling reactions.⁴² Similar carbene transfer reagents include Tebbe's and Petasis' Cp₂Ti=CH₂ reagent⁴³, however, in the herein described case transfer of a C₃ unit is possible. Moreover, the present reaction pattern is reminiscent of earlier work on retro-cycloaddition using group 4 metallocene oxido or imido complexes.⁴⁴ It should however be noted that transformation of the herein described reaction

into a catalytic protocol might be hampered by the oxophilicity of the Ti centre.

DOI: 10.1039/C9SC01002E

Conclusions

For the first time, we have shown that through combination of suitable metal centre, cyclopentadienyl ligand and substituents at the C₃ unit the synthesis of an elusive 1-metallacyclobuta-2,3-diene based on a group 4 metal is possible. Whereas for Cp and Cp* substituted complexes only formation of an unsaturated six-membered chain product was observed, possibly due to coupling of two C₃ carbene moieties, in case of *rac*-(ebthi) formation of the desired 1-titanacyclobuta-2,3-diene was possible. This compound represents a metallacyclic analogue of non-existent 1,2-cyclobutadiene. Analysis of the structure and bonding reveals a highly unusual interaction of a formal Ti(III) fragment and an organic monoanionic radical with antiferromagnetic coupling between both radical centres, resulting in a singlet species. Reaction of the metallacycle with carbonyl compounds yields enynes via an unusual [3+1] coupling with formal insertion of the C=O bond into the M-C bond being the first step of the reaction. Further studies to understand the structural principles as well as further investigations regarding the reactivity of **2** and related complexes will be done in our lab in the future.

Conflicts of interest

There are no conflicts to declare.

Acknowledgements

We thank our technical and analytical staff for assistance and Prof. Axel Schulz (University of Rostock) for helpful discussions. General support by LIKAT is gratefully acknowledged. We thank the University of Rostock for access to the cluster computer and especially Malte Willert for technical support.

Notes and references

- R. Hoffmann and H. Hopf, *Angew. Chem. Int. Ed.*, 2008, **47**, 4474-4481.
- a) R. P. Johnson, *Chem. Rev.*, 1989, **89**, 1111-1124; b) K. J. Daoust, S. M. Hernandez, K. M. Konrad, I. D. Mackie, J. Winstanley and R. P. Johnson, *J. Org. Chem.*, 2006, **71**, 5708-5714; c) M. Melaimi, P. Parameswaran, B. Donnadiou, G. Frenking and G. Bertrand, *Angew. Chem. Int. Ed.*, 2009, **48**, 4792-4795.
- U. Rosenthal, V. V. Burlakov, M. A. Bach and T. Beweries, *Chem. Soc. Rev.*, 2007, **36**, 719-728.
- E. P. Beaumier, A. J. Pearce, X. Y. See and I. A. Tonks, *Nature Reviews Chemistry*, 2019, **3**, 15-34.
- a) W. Herrmann, V. P. W. Böhm and C.-P. Reisinger, *J. Organomet. Chem.*, 1999, **576**, 23-41; b) R. H. Grubbs, *Angew. Chem. Int. Ed.*, 2006, **45**, 3760-3765; c) A. K. Tomov, J. J. Chirinos, D. J. Jones, R. J. Long, and V. C. Gibson, *J. Am. Chem. Soc.*, 2005, **127**, 10166-10167.
- U. Rosenthal, A. Ohff, W. Baumann, R. Kempe, A. Tillack and

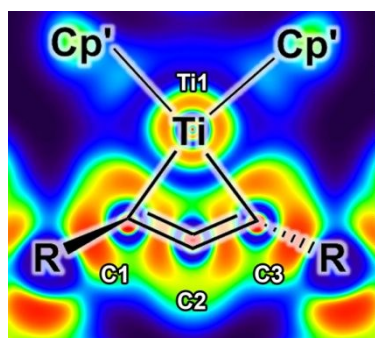


- V. V. Burlakov, *Angew. Chem. Int. Ed. Engl.*, 1994, **33**, 1605–1607.
- 7 N. Suzuki, M. Nishiura and Y. Wakatsuki, *Science*, 2002, **295**, 660–663.
- 8 J. Ugoletti, G. Dierker, G. Kehr, R. Fröhlich, S. Grimme and G. Erker, *Angew. Chem. Int. Ed.*, 2008, **47**, 2622–2625.
- 9 J. Wei, W.-X. Zhang and Z. Xi, *Chem. Sci.*, 2018, **9**, 560–568.
- 10 T. Beweries, M. Haehnel and U. Rosenthal, *Catal. Sci. Technol.*, 2013, **3**, 18–28.
- 11 a) S. Roy, E. D. Jemmis, A. Schulz, T. Beweries and U. Rosenthal, *Angew. Chem. Int. Ed.*, 2012, **51**, 5347–5350; b) S. Roy, U. Rosenthal and E. D. Jemmis, *Acc. Chem. Res.*, 2014, **47**, 2917–2930.
- 12 L. G. McCullough, R. R. Schrock, J. C. Dewan and J. C. Murdzek, *J. Am. Chem. Soc.*, 1985, **107**, 5987–5998.
- 13 L. G. McCullough, M. L. Listemann, R. R. Schrock, M. R. Churchill and J. W. Ziller, *J. Am. Chem. Soc.*, 1983, **105**, 6729–6730; b) M. R. Churchill and J. W. Ziller, *J. Organomet. Chem.*, 1985, **281**, 237–248.
- 14 a) J. Heppekausen, R. Stade, A. Kondoh, G. Seidel, R. Goddard and A. Fürstner, *Chem. Eur. J.*, 2012, **18**, 10281–10299; b) H. Ehrhorn, D. Bockfeld, M. Freytag, T. Bannenberg, C. E. Kefalidis, L. Maron and M. Tamm, *Organometallics*, 2019, DOI: 10.1021/acs.organomet.9b00068.
- 15 F. Reiß, K. Altenburger, D. Hollmann, A. Spannenberg, H. Jiao, P. Arndt, U. Rosenthal and T. Beweries, *Chem. Eur. J.*, 2017, **23**, 7891–7895.
- 16 F. Reiß, M. Reiß, A. Spannenberg, H. Jiao, D. Hollmann, P. Arndt, U. Rosenthal and T. Beweries, *Chem. Eur. J.*, 2017, **23**, 14158–14162.
- 17 Y. Pang, S. A. Petrich, V. G. Young Jr., M. S. Gordon, T. J. Barton, *J. Am. Chem. Soc.*, 1993, **115**, 2534–2536.
- 18 F. Reiß, M. Reiß, A. Spannenberg, H. Jiao, W. Baumann, P. Arndt, U. Rosenthal and T. Beweries, *Chem. Eur. J.*, 2018, **24**, 5667–5674.
- 19 M. Trose, M. Reiß, F. Reiß, F. Anke, A. Spannenberg, S. Boye, A. Lederer, P. Arndt and T. Beweries, *Dalton Trans.*, 2018, **47**, 12858–12862.
- 20 C. P. Casey, S. Kraft and D. R. Powell, *J. Am. Chem. Soc.*, 2000, **122**, 3771–3772.
- 21 T. Shimizu, D. Miyasaka and N. Kamigata, *Org. Lett.*, 2000, **2**, 1923–1925.
- 22 For basic thermochemistry, molecular structures were optimized using the pure density functional (DF) BP86 in combination with the LANL2DZ basis set and corresponding ECP at Ti and the TZVP basis set on all other atoms (notation BP86/LANL2DZ/TZVP) (see Supporting Information for details).
- 23 *Selected examples*: a) L. Labella, A. Chernega and M. L. H. Green, *J. Chem. Soc. Dalton Trans.*, 1995, 395–402; b) A. Chernega, J. Cook, M. L. H. Green, L. Labella, S. J. Simpson, J. Souter and A. H. H. Stephens, *J. Chem. Soc. Dalton Trans.*, 1997, 3225–3243; c) H. Lee, P. J. Desrosiers, I. Guzei, A. L. Rheingold and G. Parkin, *J. Am. Chem. Soc.*, 1998, **120**, 3255–3256; d) J. H. Shin and G. Parkin, *Chem. Commun.*, 1999, 887–888.
- 24 P. Pyykkö and M. Atsumi, *Chem. Eur. J.*, 2009, **15**, 12770–12779.
- 25 a) A. D. Becke, *Phys. Rev. A*, 1988, **38**, 3098–3100; b) J. P. Perdew, *Phys. Rev. B*, 1986, **33**, 8822–8824.
- 26 a) P. J. Hay and W. R. Wadt, *J. Chem. Phys.*, 1985, **82**, 270–283; b) P. J. Hay and W. R. Wadt, *J. Chem. Phys.*, 1985, **82**, 299–310.
- 27 A. Schäfer, C. Huber and R. Ahlrichs, *J. Chem. Phys.*, 1994, **100**, 5829–5835.
- 28 a) S. H. Vosko, L. Wilk and M. Nusair, *Can. J. Phys.*, 1980, **58**, 1200–1211; b) C. Lee, W. Yang, and R. G. Parr, *Phys. Rev. B*, 1988, **37**, 785–789; c) B. Miehlich, A. Savin, H. Stoll and H. Preuss, *Chem. Phys. Lett.*, 1989, **157**, 200–206; d) A. D. Becke, *J. Chem. Phys.*, 1993, **98**, 5648–5652.
- 29 a) C. J. Cramer and B. A. Smith, *J. Phys. Chem.*, 1996, **100**, 9664–9670; b) C. J. Cramer, *Essentials of Computational Chemistry: Theories and Models*, John Wiley & Sons, Ltd, Chichester, UK, 2004.
- 30 a) M. Klene, M. A. Robb, M. J. Frisch and P. Celani, *J. Chem. Phys.*, 2000, **113**, 5653–5665; b) N. Yamamoto, T. Vreven, M. A. Robb, M. J. Frisch and H. B. Schlegel, *Chem. Phys. Lett.*, 1996, **250**, 373–378.
- 31 a) L. Salem and C. Rowland, *Angew. Chem. Int. Ed. Engl.*, 1972, **11**, 92–111; b) E. Miliordos, K. Ruedenberg and S. S. Xantheas, *Angew. Chem. Int. Ed.*, 2013, **52**, 5736–5739.
- 32 Where $\beta=1$ indicates a “perfect” biradical with two electrons in two degenerate orbitals and smaller values indicate an increasing energy gap between HOMO and LUMO, and $\beta \rightarrow 0$ indicates a closed-shell species.
- 33 a) L. Noodleman, *J. Chem. Phys.*, 1981, **74**, 5737–5743; b) D. Herebian, K. E. Wieghardt and F. Neese, *J. Am. Chem. Soc.*, 2003, **125**, 10997–11005.
- 34 a) R. F. W. Bader, *Acc. Chem. Res.*, 1985, **18**, 9–15; b) R. F. W. Bader, *Chem. Rev.*, 1991, **91**, 893–928; c) R. F. W. Bader, *Atoms in Molecules: A Quantum Theory*, Oxford University Press, 1994; d) R. F. W. Bader, *Monatsh. Chem.*, 2005, **136**, 819–854.
- 35 *Performed and plotted with MultiWfn 3.5*. T. Lu and F. Chen, *J. Comput. Chem.*, 2012, **33**, 580–592.
- 36 a) R. Tonner and G. Frenking, *Angew. Chem. Int. Ed.*, 2007, **46**, 8695–8698; b) C. A. Dyker, V. Lavallo, B. Donnadiou and G. Bertrand, *Angew. Chem. Int. Ed.*, 2008, **47**, 3206–3209.
- 37 A. Hinz, R. Kuzora, A. Schulz and A. Villinger, *Chem. Eur. J.*, 2014, **20**, 14659–14673.
- 38 T. E. Hanna, E. Lobkovsky and P. J. Chirik, *Inorg. Chem.*, 2007, **46**, 2359–2361.
- 39 a) M. R. Smith, P. T. Matsunaga and R. A. Andersen, *J. Am. Chem. Soc.*, 1993, **115**, 7049–7050; b) C. Godemann, E. Barsch, A. Spannenberg, R. Ludwig and T. Beweries, *Eur. J. Inorg. Chem.*, 2014, **14**, 4068–4072.
- 40 *Selected examples*: a) N. Suzuki, R. Kurita, A. Kawamura, T. Ono and Y. Masuyama, *J. Organomet. Chem.*, 2018, **874**, 40–48; b) K. Altenburger, W. Baumann, A. Spannenberg, P. Arndt and U. Rosenthal, *Eur. J. Inorg. Chem.*, 2014, **14**, 5948–5957; c) G. Erker, K. Engel, J. L. Atwood and W. E. Hunter, *Angew. Chem. Int. Ed.*, 1983, **22**, 494–495.
- 41 R. Chinchilla, and C. Nájera, *Chem. Rev.*, 2007, **107**, 874–922.
- 42 H. Doucet and J. C. Hierso, *Angew. Chem. Int. Ed.*, 2007, **46**, 834–871.
- 43 *Modern Carbonyl Olefination – Methods and Applications* (Ed.: T. Takeda, T.), Wiley-VCH: Weinheim, 2004.
- 44 *Selected examples*: a) T. A. Hanna, A. M. Baranger, P. J. Walsh and R. G. Bergman, *J. Am. Chem. Soc.*, 1995, **117**, 3292–3293; b) T. A. Hanna, A. M. Baranger and R. G. Bergman, *J. Org. Chem.*, 1996, **61**, 4532–4541; c) F. Basuli, H. Aneetha, J. C. Huffman and D. J. Mindiola, *J. Am. Chem. Soc.*, 2005, **127**, 17992–17993; d) U. J. Kilgore, F. Basuli, J. C. Huffman and D. J. Mindiola, *Inorg. Chem.*, 2006, **45**, 487–489; e) G. D. Kortman, M. J. Orr and K. L. Hull, *Organometallics*, 2015, **34**, 1013–1016; f) T. T. Nguyen, G. D. Kortman and K. L. Hull, *Organometallics*, 2016, **35**, 1713–1725.



TOC entry

View Article Online
DOI: 10.1039/C9SC01002E



The synthesis and characterisation of a 1-titanacyclobuta-2,3-diene complex, an organometallic analog of elusive 1,2-cyclobutadiene, is presented.

