

A Journal of the Gesellschaft Deutscher Chemiker

# Angewandte Chemie

GDCh

International Edition

www.angewandte.org

## Accepted Article

**Title:** Enantioselective Synthesis of Chiral Synthons for Artificial Dipeptide Sweeteners Catalyzed by an Engineered C-N Lyase

**Authors:** Jieli Zhang, Eleonora Grandi, Haigen Fu, Thangavelu Saravanan, Laura Bothof, Pieter G. Tepper, Andy-Mark W. H. Thunnissen, and Gerrit Jan Poelarends

This manuscript has been accepted after peer review and appears as an Accepted Article online prior to editing, proofing, and formal publication of the final Version of Record (VoR). This work is currently citable by using the Digital Object Identifier (DOI) given below. The VoR will be published online in Early View as soon as possible and may be different to this Accepted Article as a result of editing. Readers should obtain the VoR from the journal website shown below when it is published to ensure accuracy of information. The authors are responsible for the content of this Accepted Article.

**To be cited as:** *Angew. Chem. Int. Ed.* 10.1002/anie.201910704  
*Angew. Chem.* 10.1002/ange.201910704

**Link to VoR:** <http://dx.doi.org/10.1002/anie.201910704>  
<http://dx.doi.org/10.1002/ange.201910704>

## RESEARCH ARTICLE

# Enantioselective Synthesis of Chiral Synthons for Artificial Dipeptide Sweeteners Catalyzed by an Engineered C-N Lyase

Jielin Zhang,<sup>[a]</sup> Eleonora Grandi,<sup>[a]</sup> Haigen Fu,<sup>[a]</sup> Thangavelu Saravanan,<sup>[a]</sup> Laura Bothof,<sup>[a]</sup> Pieter G. Tepper,<sup>[a]</sup> Andy-Mark W.H. Thunnissen,<sup>[b]</sup> and Gerrit J. Poelarends<sup>\*[a]</sup>

**Abstract:** Aspartic acid derivatives with branched *N*-alkyl or *N*-arylalkyl substituents are valuable precursors to artificial dipeptide sweeteners such as neotame and advantame, which have wide-ranging applications in the food industry. Despite the potential applications of these amino acid precursors to aspartame-based sweeteners, the development of a biocatalyst to synthesize these compounds in a single asymmetric step is an as yet unmet challenge. Herein we report an enantioselective biocatalytic synthesis of various difficult *N*-substituted aspartic acids including *N*-(3,3-dimethylbutyl)-L-aspartic acid and *N*-[3-(3-hydroxy-4-methoxyphenyl)propyl]-L-aspartic acid, precursors to neotame and advantame respectively, using an engineered variant of ethylenediamine-*N,N*-disuccinic acid (EDDS) lyase from *Chelativorans* sp. BNC1. This engineered C-N lyase (mutant D290M/Y320M) displayed a remarkable 1140-fold increase in activity for the selective hydroamination of fumarate compared to that of the wild-type enzyme, which could be rationalized from the analysis of crystal structures. These results open up new opportunities to develop practical multienzymatic processes for the more sustainable and step-economic synthesis of an important class of food additives.

## Introduction

Artificial low-calorie sweeteners are used as sugar replacements in the food industry, with the benefits of controlling energy intake and blood glucose levels, improving dental health and other health concerns related to sugar overconsumption.<sup>[1–6]</sup> The dipeptide aspartame, which is ~200-fold sweeter than sucrose (Scheme 1A), is one of the most widely used artificial sweeteners with a substantial production volume each year.<sup>[7]</sup> The derivatization of aspartame with branched *N*-alkyl- or *N*-arylalkyl-groups generates even sweeter compounds, such as the more recently approved food additives neotame and advantame (Scheme 1A).<sup>[6,8–10]</sup> Notably, neotame is 7,000–13,000 times sweeter than sucrose, while advantame is ~20,000 times sweeter

than sucrose. A common synthetic method for neotame and advantame production is the reductive *N*-alkylation of aspartame with the corresponding aldehyde in the presence of hydrogen using a palladium (Pd/C) or platinum (Pt/C) hydrogenation catalyst (Scheme 1B, Method 1).<sup>[10–14]</sup> An alternative strategy for neotame production involves *N*-(3,3-dimethylbutyl)-L-aspartic acid (**3a**) as precursor, which was linked to L-phenylalanine methyl ester by amide bond coupling (Scheme 1B, Method 2).<sup>[15–17]</sup> This precursor is chemically synthesized by reductive *N*-alkylation of L-aspartic acid (or its ester derivative) using transition-metal catalysts (Pd/C or Pt/C). Similarly, *N*-[3-(3-hydroxy-4-methoxyphenyl)propyl]-L-aspartic acid (**3f**) could be chemically prepared by reductive *N*-alkylation of L-aspartic acid and serve as precursor to advantame. However, the development of a biocatalyst for enantioselective synthesis of these difficult *N*-substituted aspartic acids **3a** and **3f** in a single asymmetric step is an as yet unmet challenge.

Here we report the engineering of an effective C-N lyase, based on ethylenediamine-*N,N*-disuccinic acid (EDDS) lyase from *Chelativorans* sp. BNC1,<sup>[18–20]</sup> for the enantioselective synthesis of *N*-(3,3-dimethylbutyl)-L-aspartic acid (**3a**) and *N*-[3-(3-hydroxy-4-methoxyphenyl)propyl]-L-aspartic acid (**3f**), precursors to neotame and advantame respectively, as well as related chiral synthons for aspartame-based sweeteners starting from the simple nonchiral compound fumaric acid (**1**, Scheme 1C). This newly engineered C-N lyase shows a 1140-fold increase in activity for the selective hydroamination of fumarate compared to that of the wild-type enzyme, opening up new opportunities to design practical multienzymatic processes for the more sustainable and step-economic synthesis of an important class of food additives.

## Results and Discussion

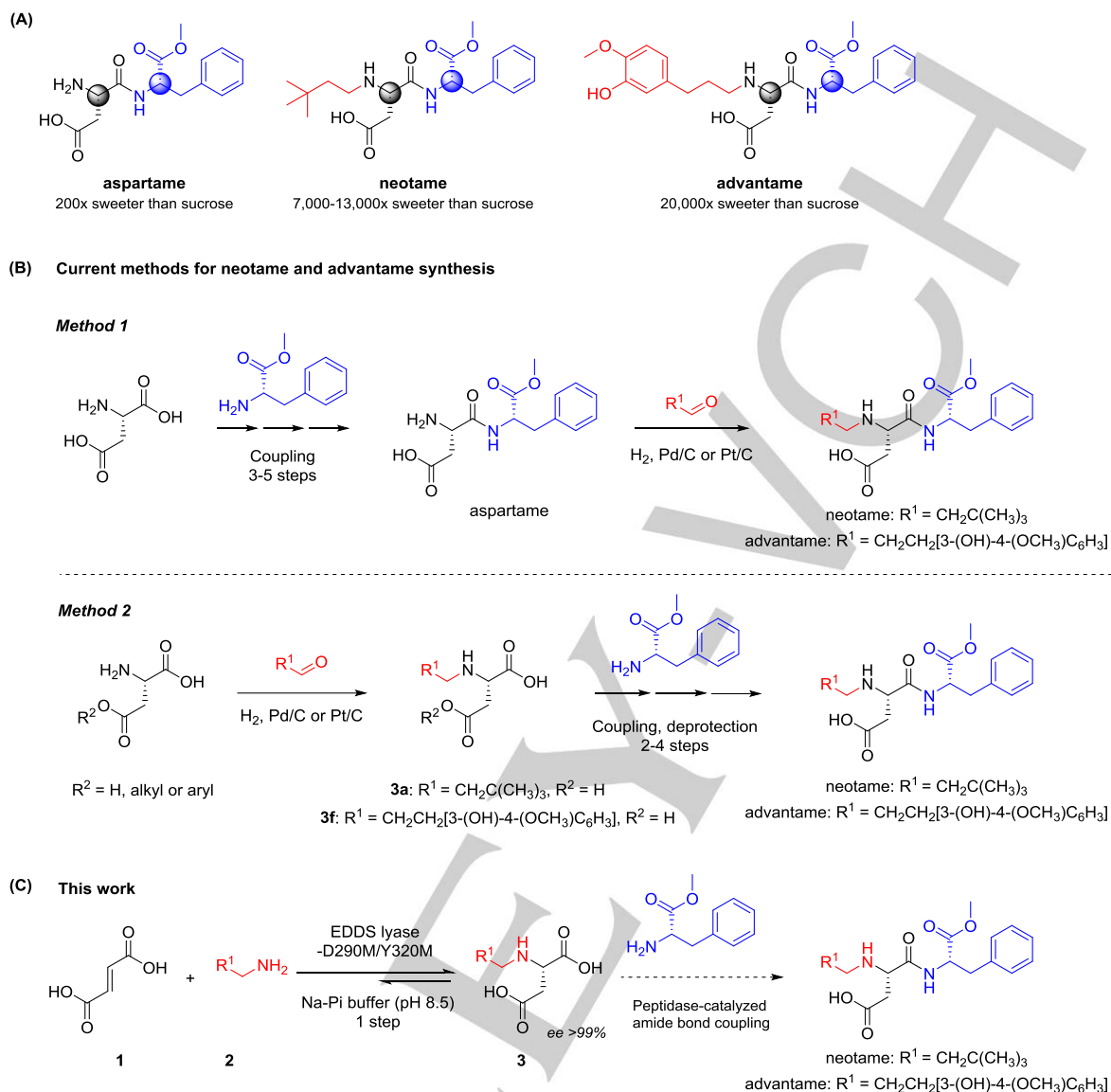
Our group has previously reported that an engineered variant of 3-methylaspartate ammonia lyase (MAL-Q73A) accepts various amines, including butylamine (**2c**, Table 1), for enantioselective hydroamination of fumarate (**1**).<sup>[21,22]</sup> Structurally, amines **2b** and **2a** have respectively one or two extra methyl group(s) at the C-3 position compared with **2c**. This prompted us to start our investigations by testing the branched amines **2a** and **2b** as unnatural substrates in the MAL-Q73A catalyzed hydroamination of **1**. Although amine **2b** was accepted by MAL-Q73A for slow hydroamination of **1** (Figure S1), yielding optically pure L-**3b** (e.e. >99%), amine **2a** was unfortunately not accepted as substrate by MAL-Q73A. This suggests that the bulky tert-butyl group of **2a** prevents productive binding in the enzyme active site, making amine **2a** a challenging substrate for C-N lyases.

[a] J. Zhang, E. Grandi, H. Fu, Dr. T. Saravanan, L. Bothof, P.G. Tepper, Prof. Dr. G.J. Poelarends  
Department of Chemical and Pharmaceutical Biology  
Groningen Research Institute of Pharmacy, University of Groningen  
Antonius Deusinglaan 1, 9713 AV Groningen, The Netherlands  
E-mail: g.j.poelarends@rug.nl

[b] Dr. A.M.W.H. Thunnissen  
Molecular Enzymology Group  
Groningen Institute of Biomolecular Sciences and Biotechnology,  
University of Groningen  
Nijenborgh 4, 9747 AG Groningen, The Netherlands

Supporting information for this article is given via a link at the end of the document.

## RESEARCH ARTICLE



**Scheme 1.** (A) Structures of the low-calorie artificial dipeptide sweeteners aspartame, neotame and advantame; (B) Current synthesis methods for neotame and advantame involve metal-catalyzed reductive *N*-alkylation; (C) Biocatalytic asymmetric synthesis of *N*-substituted aspartic acids **3** as precursors for potential multienzymatic synthesis of neotame and advantame.

We continued our investigations by testing whether EDDS lyase, which has previously been shown to possess an exceptionally broad amine scope,<sup>[18–20]</sup> can accept the challenging amine **2a** as an unnatural substrate in the hydroamination of **1**. Pleasingly, EDDS lyase accepted **2a** for addition to **1**, giving rise to target compound **3a**. Under optimized conditions, excellent conversion (92% after 7 days) and good isolated yield (67%) of **3a** were achieved using 0.15 mol% biocatalyst loading (Table 1, Figure S2). The enzymatic product **3a** was identified as the desired L-enantiomer with >99% e.e. Amines **2b** and **2c** were also readily converted by EDDS lyase to afford the respective optically pure products L-**3b** and L-**3c** (>99% e.e.) with 93–95% conversion and in 66–74% isolated yield (Table 1). Interestingly, the bulky arylalkylamines **2d–f** were also accepted as substrates by EDDS lyase, yielding the respective products L-**3d–f**. High conversion

(82–97% after 7 days) and excellent enantioselectivity (>99% e.e.) were observed (Table 1).

Although EDDS lyase is the first identified biocatalyst to synthesize target compound **3a** in a single asymmetric step, its catalytic activity for this transformation is quite low resulting in a rather long reaction time of 7 days when using 0.15 mol% biocatalyst loading. Therefore, a structure-based protein engineering strategy was applied to enhance this hydroamination activity of EDDS lyase. On the basis of the structure of EDDS lyase in complex with its natural substrate (*S,S*)-EDDS (Figure 1),<sup>[18]</sup> two residues (Asp290 and Tyr320) were chosen for site-saturation mutagenesis (SSM) because of their presumed roles in positioning of the amine substrate for addition to fumarate. Specifically, residue Asp290 forms a water-mediated hydrogen bond with the internal amino group connected to the distal

## RESEARCH ARTICLE

succinyl moiety of (S,S)-EDDS, which appears to be an important interaction for binding and positioning of ethylenediamine and other diamine substrates (but not for monoamines such as **2a**) for

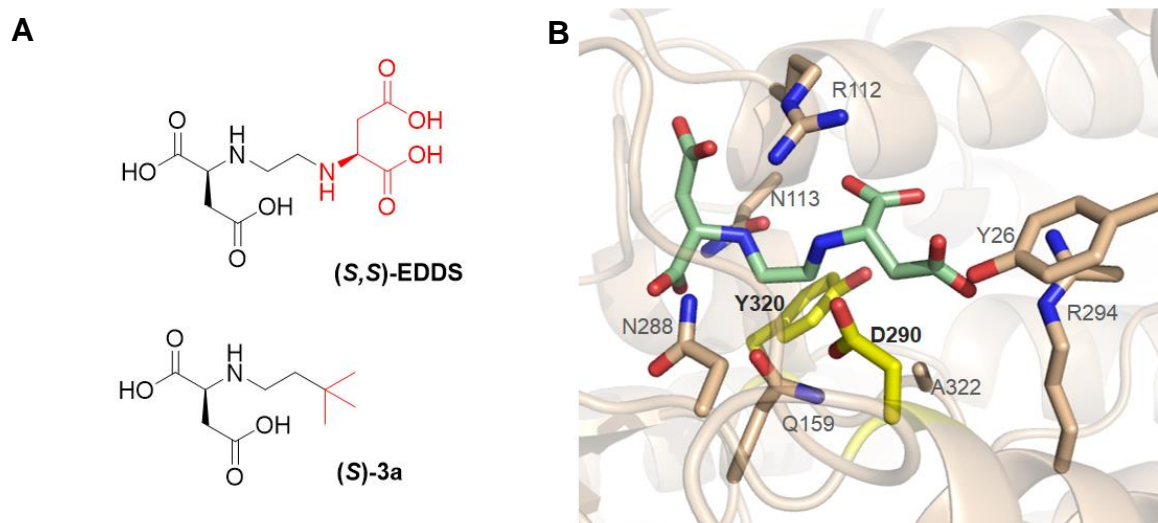
addition to fumarate. The bulky aromatic ring of Tyr320 may further preclude optimal positioning of amine **2a**.

**Table 1.** Enantioselective synthesis of neotame and advantame precursors, as well as related compounds, using EDDS lyase or its engineered variant D290M/Y320M as biocatalyst.

		<b>2a, 3a:</b> R <sup>1</sup> = CH <sub>2</sub> C(CH <sub>3</sub> ) <sub>3</sub> <b>2b, 3b:</b> R <sup>1</sup> = CH <sub>2</sub> CH(CH <sub>3</sub> ) <sub>2</sub> <b>2c, 3c:</b> R <sup>1</sup> = CH <sub>2</sub> CH <sub>2</sub> CH <sub>3</sub> <b>2d, 3d:</b> R <sup>1</sup> = C <sub>6</sub> H <sub>5</sub> <b>2e, 3e:</b> R <sup>1</sup> = CH <sub>2</sub> CH <sub>2</sub> C <sub>6</sub> H <sub>5</sub> <b>2f, 3f:</b> R <sup>1</sup> = CH <sub>2</sub> CH <sub>2</sub> [3-(OH)-4-(OCH <sub>3</sub> )C <sub>6</sub> H <sub>3</sub> ]						
Entry	Amine	Product	WT <sup>[a]</sup>		D290M/Y320M <sup>[b]</sup>		e.e. <sup>[d]</sup> [%]	
			Conv. (yield) <sup>[c]</sup> [%]	Time [days]	Conv. (yield) <sup>[c]</sup> [%]	Time [hours]		
1	<b>2a</b>		<b>3a</b>	92 (67)	7	96 (83)	2.5 <sup>e</sup>	>99
2	<b>2b</b>		<b>3b</b>	93 (74)	7	93 (81)	2.5 <sup>e</sup>	>99
3	<b>2c</b>		<b>3c</b>	95 (66)	7	92 (68)	2.5 <sup>e</sup>	>99
4	<b>2d</b>		<b>3d</b>	97 (45)	7	96 (49)	6	>99
5	<b>2e</b>		<b>3e</b>	93 (40)	7	90 (40)	6	>99
6	<b>2f</b>		<b>3f</b>	82 (34)	7	82 (34)	6	>99

[a] Reaction conditions: fumaric acid (**1**, 10 mM), amine (**2a-f**, 50 or 100 mM) and EDDS lyase WT (0.05 or 0.15 mol% based on fumaric acid) in NaH<sub>2</sub>PO<sub>4</sub>/NaOH buffer (pH 8.5) at room temperature. [b] Reaction conditions: fumaric acid (**1**, 10 mM), amine (**2a-f**, 50 or 100 mM), glycerol (45%, v/v) and EDDS lyase D290M/Y320M (0.05 mol% based on fumaric acid) in NaH<sub>2</sub>PO<sub>4</sub>/NaOH buffer (pH 8.5) at room temperature. [c] Conversion was determined by <sup>1</sup>H NMR spectroscopy; isolated yield after ion-exchange chromatography. [d] The e.e. value was determined by high-performance liquid chromatography on a chiral stationary phase using chemically synthesized authentic standards. [e] The apparent *k*<sub>cat</sub>/*K*<sub>m</sub> values (using 5 mM **1**) were estimated to be 5.1 (**2c**), 12.8 (**2b**) and 14.5 M<sup>-1</sup>s<sup>-1</sup> (**2a**).

## RESEARCH ARTICLE



**Figure 1.** (A) Structures of natural substrate (S,S)-EDDS and target compound (S)-3a and (B) a close-up of the active site of EDDS lyase with bound (S,S)-EDDS (PDB: 6G3H). The bound (S,S)-EDDS (green) and side chains of residues forming the amine binding pocket are shown using stick representation. The two target residues for mutagenesis, Asp290 and Tyr320, are shown in yellow.

Accordingly, two focused libraries were constructed by randomizing positions Asp290 and Tyr320, yielding libraries D290X and Y320X. The libraries were transformed into *Escherichia coli* cells and screened by evaluating ~100 transformants of each library. Initially, we evaluated mutants in the D290X library by monitoring the depletion of **1** in a spectrophotometric kinetic assay in multi-well plates using cell free extracts (CFEs). However, this screening was unsuccessful because **1** was converted at a similar rate by all CFEs, including a CFE prepared from *E. coli* cells not producing EDDS lyase (Figure S3). We assumed that this relatively high background consumption of **1** was caused by indigenous fumarase (FumC) activity present in the *E. coli* CFE, resulting in the undesired hydration of **1** to give L-malic acid, which outcompeted the slower EDDS lyase mediated hydroamination of **1**.<sup>[23,24]</sup> Considering that the removal of fumarase by enzyme purification from CFEs is quite laborious and not suitable for library screening, we tested whether the addition of fumarase inhibitors (D-malate, citrate and glycerol) could suppress FumC-dependent hydration of **1**. While D-malate and citrate did not show sufficient inhibition (data not shown), the addition of glycerol (45%, v/v) to the screening assay effectively inhibited FumC-catalyzed hydration of **1** (Figures S4A and S5). It has been reported that glycerol inhibits FumC by affecting a conformational change, which appears to be the rate-limiting step, based on its viscogenic effect.<sup>[25]</sup> Importantly, control experiments demonstrated that the activity of EDDS lyase, measured by the addition of ethylene diamine to **1**, was not inhibited by glycerol (Figure S4B). Based on these optimizations, 45% (v/v) glycerol was included in the screening assay as additive to suppress the FumC-catalyzed hydration of **1**, enabling hydroamination activity screening of mutant libraries using CFEs instead of purified proteins.

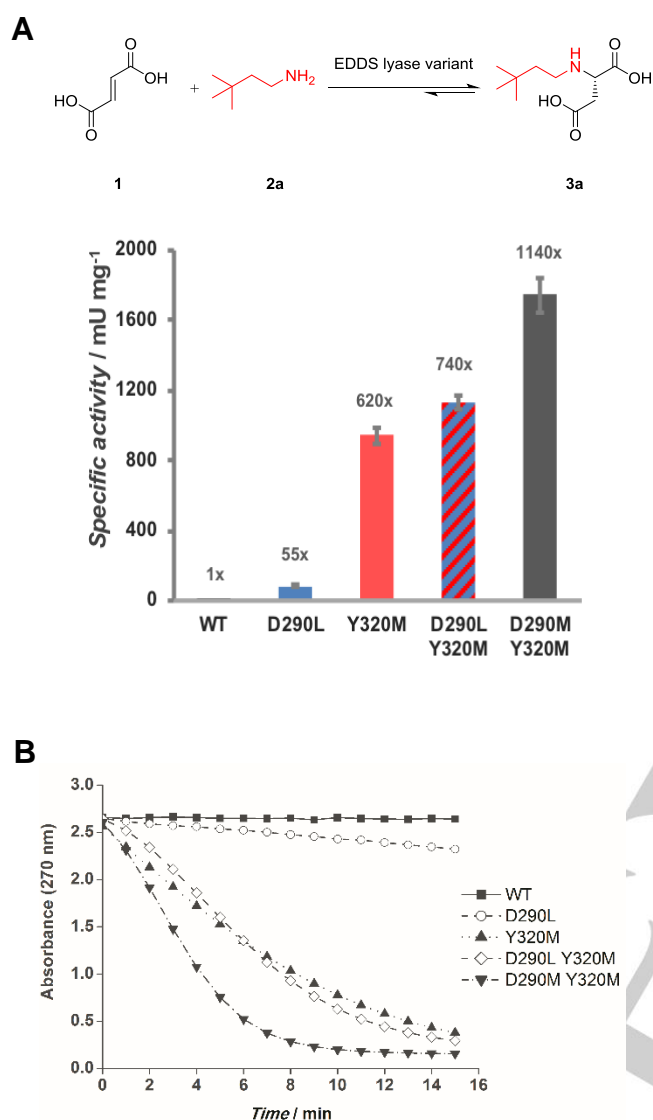
Using this optimized assay, screening of the D290X and Y320X libraries resulted in the identification of five mutants (D290L, D290V, Y320M, Y320V and Y320L) with significantly improved activity. These mutant enzymes were purified to homogeneity and assayed for their ability to catalyze the addition of **2a** to **1** to yield target compound **3a**. The best mutant from the D290X library (D290L) showed a 55-fold enhanced activity, while the best mutant from the Y320X library (Y320M) displayed a remarkable 620-fold increase in activity compared to that of the wild-type enzyme (Figure 2, Table S2).

To further improve the catalytic activity of EDDS lyase, we used an iterative saturation mutagenesis (ISM) strategy, using the best four hits from the single-site libraries as templates and randomizing the other respective position. Accordingly, the libraries D290L/Y320X, Y320M/D290X, Y320V/D290X and Y320L/D290X were constructed. The screening of these libraries resulted in the identification of four double mutants, D290M/Y320M, D290H/Y320M, D290L/Y320M and D290M/Y320V, which showed activity improvement over the best single mutant Y320M. Based on assays using purified enzymes, the mutant D290M/Y320M was shown to be the best mutant enzyme, with a striking 1140-fold increase in activity compared to that of the wild-type enzyme (Figure 2, Table S2). Notably, the mutant enzyme D290L/Y320M, in which the two best single mutations at each position are combined, displayed a lower activity compared to that of mutant D290M/Y320M (Figure 2), illustrating the importance of using an ISM approach to identify the best mutant.

To understand how the mutations cause the large increase in activity we determined crystal structures of EDDS lyase variant D290M/Y320M. Crystal structures were obtained with fumarate or formate occupying the active site (Table S3, Figure S6), like previously shown for the wild-type enzyme.<sup>[18]</sup> Similar as in the



## RESEARCH ARTICLE



**Figure 2.** Engineering of EDDS lyase for efficient synthesis of **3a**. **(A)** Activity improvement of EDDS lyase variants over wild type. Conditions: **1** (5 mM), **2a** (100 mM), purified enzyme (0.15 mol% based on fumaric acid), glycerol (45%, v/v), NaH<sub>2</sub>PO<sub>4</sub>/NaOH buffer (pH 8.5), r.t. Reactions were monitored by following the depletion of **1** at 270 nm by UV spectroscopy. Reactions were performed in triplicate (See Table S2 for details). **(B)** Progress curves for addition of **2a** to **1** catalyzed by EDDS lyase wild type and variants.

wild-type structure, fumarate is bound tightly in the active site of the mutant through interactions with its two carboxylate groups, while its C $\beta$  atom faces the hydroxyl oxygen of Ser280, the catalytic base, at a distance of 3 Å. A second fumarate is bound somewhat away from the active site, in a region which in the wild-type structure is responsible for binding the distal succinate group of (S,S)-EDDS. The formate-bound mutant structure contains three formate ions, two of which occupy positions in the active site where the carboxylate groups of fumarate bind, further denoting the integrity of the active site. A detailed comparison of the mutant

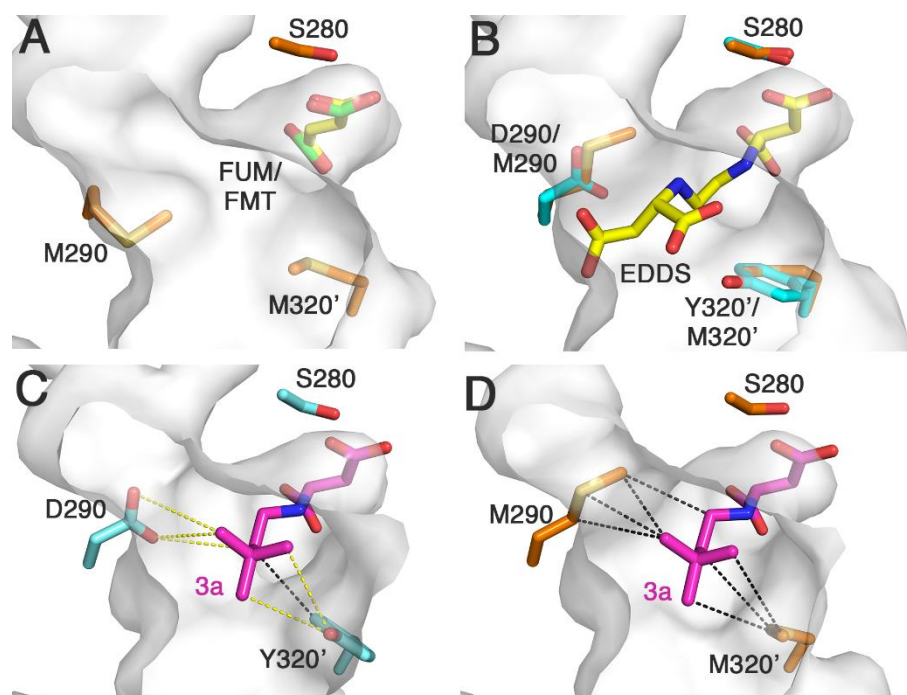
and wild-type structures revealed no significant differences in overall protein structure, nor in the conformations of the active site residues responsible for binding and activating fumarate prior to the amine addition. Mutations D290M and Y320M are located at opposite sides of the presumed amine binding pocket, and the main structural consequences of the amino acid substitutions are a slight reshaping of the pocket and a significant increase of its hydrophobicity (Figure 3A, B). Further insights were obtained from docking compound **3a** in the EDDS lyase wild-type and mutant crystal structures (efforts to obtain crystal structures with bound **3a** were unsuccessful). The modeling results show that while residues Asp290 and Tyr320 in the wild-type structure form unfavorable polar-apolar contacts with the 3,3-dimethylbutyl moiety of **3a**, residues Met290 and Met320 in the mutant structure are able to form favorable apolar-apolar contacts (Figure 3C, D). The increased hydrophobicity of the pocket due to the D290M and Y320M mutations thus leads to improved binding interactions with the apolar 3,3-dimethylbutyl moiety of **3a**, suggesting that the large increase in activity of mutant enzyme D290M/Y320M is a consequence of much stronger, and possibly more productive, binding of amine **2a**.

Importantly, we observed that the activity of the mutant enzyme D290M/Y320M for the addition of **2a** (100 mM) to **1** (5 mM) was affected by glycerol. The enzymatic activity decreased significantly (~2.5-fold) when the glycerol concentration in the reaction mixture was reduced from 45% to 30% (v/v) and became almost undetectable when the glycerol concentration was lowered to ≤20% (Figure S7). This decrease in enzyme activity upon lowering the glycerol concentration was accompanied by slight protein precipitation. Since the D290M/Y320M mutant was observed to be stable and fully active after several hours of incubation in buffer (without amine substrate) at room temperature, it appears that in the presence of high concentrations of amine **2a** (100 mM), the D290M/Y320M mutant is not stable and loses activity. In the reaction mixture with 100 mM amine **2a**, the D290M/Y320M mutant was stabilized by glycerol (45%, v/v), which is a routinely used stabilizing agent for proteins.<sup>[26,27]</sup> Note that the addition of 45% (v/v) glycerol did not effect the hydroamination activity of the wild-type enzyme under the same conditions (Figure S8).

Interestingly, this implies that glycerol played dual roles in mutant library screening; it served both as fumarase inhibitor and as protein stabilizer. The presence of 45% (v/v) glycerol during library screening was thus essential for the identification of the D290M/Y320M mutant, suggesting that the incorporation of cosolvents in screening assays is an appealing strategy to identify mutants with the desired activity, but having reduced stability, in enzyme evolution. Our results provide support for the notion that protein stability is a major constraint in enzyme evolution, and buffering mechanisms such as the inclusion of stabilizing cosolvents are key in relieving this constraint.<sup>[28]</sup>

Having generated an EDDS lyase variant with strongly improved catalytic activity (mutant D290M/Y320M), we tested its performance as biocatalyst for the synthesis of our target compound **3a**. With 0.05 mol% of biocatalyst loading, starting substrates **1** and **2a** were readily converted to afford optically pure L-**3a** (>99% e.e.) with 96% conversion after only 2.5 h (instead of 7 days as observed for the same transformation with the wild-type enzyme) and in 83% isolated yield (entry 1 in Table 1, Figure S9).

## RESEARCH ARTICLE



**Figure 3.** Structural analysis of EDDS lyase D290M/Y320M (A) Close-up view of the active site in the crystal structure of fumarate-bound EDDS lyase D290M/Y320M (pdb entry 6RX8). Shown as sticks are bound fumarate (FUM, yellow), the side chain of the catalytic serine Ser280 (orange) and the side chains of Met290 and Met320' (orange, the apostrophe denotes that the residue is from another subunit). Also shown as an overlay are two formate ions (FMT, green sticks) found in the crystal structure of formate-bound EDDS lyase D290M/Y320M (pdb entry 6RXA). The second fumarate and third formate found in the crystal structures are omitted for reasons of clarity. Oxygens are colored red, sulfurs yellow. (B) Binding mode of (S,S)-EDDS (yellow sticks) in the crystal structure of wild-type EDDS lyase showing the side chains of S280, D290 and Y320' (cyan, pdb entry 6G3H). Shown as an overlay are the side chains of S280, M290 and M320' from the formate-bound crystal structure of the EDDS lyase variant. (C, D) Binding mode of compound **3a** (magenta sticks) at the active sites of wild-type EDDS lyase (panel C) and EDDS lyase D290M/Y320M (panel D), as obtained by docking. Dashed lines indicate unfavorable polar-apolar contacts (yellow, distances ~4 Å) or favorable hydrophobic apolar-apolar contacts (black, distances 4-5 Å).

To further demonstrate the synthetic usefulness of this newly engineered C-N lyase, amines **2b-f** were tested as substrates in the hydroamination of **1**. The enzymatic reactions proceeded smoothly to afford enantiomerically pure products **L-3b-f** (>99% e.e.) with 82-96% conversion (after a few hours rather than 7 days) and in 34-81% yield (entries 2-6 in Table 1, Figure S10). These amino acid products (except **3d**) are key building blocks for *N*-functionalized aspartame derivatives that were reported to be much sweeter than sucrose.<sup>[6]</sup> Notably, product **3f** is a chiral precursor for the synthesis of advantame (Scheme 1), which, like neotame, has already been approved for application in food products.

## Conclusion

In conclusion, we have successfully engineered a C-N lyase for efficient asymmetric addition of challenging amines to fumarate to yield optically pure *N*-(3,3-dimethylbutyl)-L-aspartic acid and *N*-[3-(3-hydroxy-4-methoxyphenyl)propyl]-L-aspartic acid, which are important precursors to neotame and advantame respectively. Interestingly, the presence of glycerol during

laboratory evolution was essential for the identification of this improved C-N lyase, suggesting that the inclusion of stabilizing cosolvents is an appealing strategy to reduce the constraining effects of protein stability during enzyme evolution. The newly developed biocatalytic methodology offers a useful alternative route to important chiral synthons for artificial dipeptide sweeteners. The engineered C-N lyase nicely supplements the toolbox of biocatalysts for production of unnatural amino acids, and opens up new opportunities to develop an entirely enzymatic route for the straightforward synthesis of valuable aspartame-based sweeteners, starting from the simple non-chiral dicarboxylic acid **1** (Scheme 1C). Although the engineered EDDS lyase variant D290M/Y320M exhibits a respectable specific activity of 1.74 U/mg for the addition of **2a** to **1**, ongoing enzyme engineering work in our group is focused on further improving its stability (in the absence of glycerol) and catalytic efficiency (in terms of  $k_{cat}/K_m$ ) for this reaction. As such, this work sets the stage for further development of practical multienzymatic processes for the more sustainable and step-economic synthesis of an important class of food additives.

## RESEARCH ARTICLE

## Experimental Section

**Experimental Details.** All experimental details can be found in the Supporting Information.

## Acknowledgements

We acknowledge funding from The Netherlands Organization of Scientific Research (VICI grant 724.016.002) and the European Research Council (PoC grant 713483). Jieli Zhang and Haigen Fu acknowledge funding from the China Scholarship Council. The authors thank Harshwardhan Poddar and Lieuwe Biewenga for insightful discussions, and Gea Cruiming for assistance with synthesis and Dr. Robbert H. Cool for assistance with enzyme purification. Dr. Daniele de Sanctis from the European Synchrotron Radiation Facility (Grenoble) is acknowledged for assistance with X-ray data collection at beamline ID29.

**Keywords:** Artificial sweetener • C-N lyase • protein engineering • aspartate derivatives • hydroamination • biocatalysis

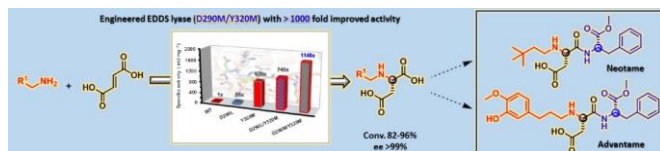
- [1] R. K. Johnson, A. H. Lichtenstein, C. A. M. Anderson, J. A. Carson, J. P. Després, F. B. Hu, P. M. Kris-Etherton, J. J. Otten, A. Towfighi, J. Wylie-Rosett, *Circulation* **2018**, *138*, 126–140.
- [2] C. H. Edwards, M. Rossi, C. P. Corpe, P. J. Butterworth, P. R. Ellis, *Trends Food Sci. Technol.* **2016**, *56*, 158–166.
- [3] A. C. Sylvetsky, K. I. Rother, *Physiol. Behav.* **2016**, *164*, 446–450.
- [4] A. D. Mooradian, M. Smith, M. Tokuda, *Clin. Nutr. ESPEN* **2017**, *18*, 1–8.
- [5] S. Chattopadhyay, U. Raychaudhuri, R. Chakraborty, *J. Food Sci. Technol.* **2014**, *51*, 611–621.
- [6] G. Livesey in *Sweeteners and Sugar Alternatives in Food Technology, Second Edition* (Eds.: K. O'Donnell, M. W. Kearsley), Wiley-Blackwell, Chichester, **2012**, pp.1-26.
- [7] G. Birrane, B. Bhyravbhalla, M. A. Navia, *ACS Med. Chem. Lett.* **2014**, *5*, 706–710.
- [8] C. Nofre, J.-M. Tinti, US Patent 5480668, **1993**.
- [9] A. Otabe, T. Fujieda, T. Masuyama, K. Ubukata, C. Lee, *Food Chem. Toxicol.* **2011**, *49*, S2–S7.
- [10] C. Nofre, J.-M. Tinti, *Food Chem.* **2000**, *69*, 245–257.
- [11] I. Prakash, I. Bishay, S. Schroeder, *Synth. Commun.* **1999**, *29*, 4461–4467.
- [12] K. O'donnell in *Sweeteners and Sugar Alternatives in Food Technology, Second Edition* (Eds.: K. O'Donnell, M. W. Kearsley), Wiley-Blackwell, Chichester, **2012**, pp. 117–136.
- [13] C. Nofre, J.-M. Tinti, US Patent 5510508, **1996**.
- [14] I. Prakash (The NutraSweet Company), US Patent 5728862, **1998**.
- [15] I. Prakash, M.-C. D. Chapeau (The NutraSweet Company), US Patent 6077962, **2000**.
- [16] I. Prakash, R. Y. Zhao, US Patent 6627431, **2003**.
- [17] I. Prakash (The NutraSweet Company), EP 1284991, **2001**.
- [18] H. Poddar, J. de Villiers, J. Zhang, V. Puthan Veetil, H. Raj, A.-M. W. H. Thunnissen, G. J. Poelarends, *Biochemistry* **2018**, *57*, 3752–3763.
- [19] H. Fu, J. Zhang, M. Saifuddin, G. Cruiming, P. G. Tepper, G. J. Poelarends, *Nat. Catal.* **2018**, *1*, 186–191.
- [20] J. Zhang, H. Fu, P. G. Tepper, G. J. Poelarends, *Adv. Synth. Catal.* **2019**, *361*, 2433–2437.
- [21] H. Raj, W. Szymanski, J. de Villiers, H. J. Rozeboom, V. P. Veetil, C. R. Reis, M. de Villiers, F. J. Dekker, S. de Wildeman, W. J. Quax, A.-M. W. H. Thunnissen, B. L. Feringa, D. B. Janssen, G. J. Poelarends, *Nat. Chem.* **2012**, *4*, 478–484.
- [22] V. Puthan Veetil, H. Raj, M. De Villiers, P. G. Tepper, F. J. Dekker, W. J. Quax, G. J. Poelarends, *ChemCatChem* **2013**, *5*, 1325–1327.
- [23] S. A. Woods, S. D. Schwartzbach, J. R. Guest, *Biochim. Biophys. Acta, Protein Struct. Mol. Enzymol.* **1988**, *954*, 14–26.
- [24] C.-P. Tseng, C.-C. Yu, H.-H. Lin, C.-Y. Chang, J.-T. Kuo, *J. Bacteriol.* **2001**, *183*, 461–467.
- [25] I. A. Rose, T. M. Weaver, *Proc. Natl. Acad. Sci. U. S. A.* **2004**, *101*, 3393–3397.
- [26] K. Gekko, S. N. Timasheff, *Biochemistry* **1981**, *20*, 4667–4676.
- [27] V. Vagenende, M. G. S. Yap, B. L. Trout, *Biochemistry* **2009**, *48*, 11084–11096.
- [28] N. Tokuriki, D. S. Tawfik, *Nature* **2009**, *459*, 668–673.



## RESEARCH ARTICLE

## Entry for the Table of Contents

## RESEARCH ARTICLE



Jielin Zhang, Eleonora Grandi, Haigen Fu, Thangavelu Saravanan, Laura Bothof, Pieter G. Tepper, Andy-Mark W.H. Thunnissen, and Gerrit J. Poelarends\*

Page No. – Page No.

**Enantioselective Synthesis of Chiral Synthons for Artificial Dipeptide Sweeteners Catalyzed by an Engineered C-N Lyase**

**Engineered carbon-nitrogen lyase working in reverse:** The enzyme ethylenediamine-*N,N*-disuccinic acid lyase was optimized by structure-guided mutagenesis for the enantioselective synthesis of challenging *N*-substituted aspartic acids, which are important chiral precursors to artificial dipeptide sweeteners. This redesigned C-N lyase displayed a remarkable 1140-fold increase in activity for selective hydroamination of fumarate.