

The Biosynthetic Origin of Irregular Monoterpenes in *Lavandula*

ISOLATION AND BIOCHEMICAL CHARACTERIZATION OF A NOVEL *cis*-PRENYL DIPHOSPHATE SYNTHASE GENE, LAVANDULYL DIPHOSPHATE SYNTHASE^{*[5]}

Received for publication, October 26, 2012, and in revised form, January 6, 2013. Published, JBC Papers in Press, January 10, 2013, DOI 10.1074/jbc.M112.431171

Zerihun A. Demissie¹, Lauren A. E. Erland, Mark R. Rheault, and Soheil S. Mahmoud²

From the Department of Biology, University of British Columbia, Kelowna, British Columbia V1V 1V7, Canada

Background: *Lavandula* accumulate irregular monoterpenes of unknown biosynthetic origin.

Results: We cloned a *cis*-prenyl diphosphate synthase (*cis*-PDPS) that produces precursor for irregular monoterpenes in lavenders.

Conclusion: Unlike other plants that utilize *trans*-PDPSs, *Lavandula* employ a *cis*-PDPS to initiate the biosynthesis of irregular monoterpenes.

Significance: This is the first report of the involvement of a *cis*-PDPS in irregular monoterpene biosynthesis.

Lavender essential oils are constituted predominantly of regular monoterpenes, for example linalool, 1,8-cineole, and camphor. However, they also contain irregular monoterpenes including lavandulol and lavandulyl acetate. Although the majority of genes responsible for the production of regular monoterpenes in lavenders are now known, enzymes (including lavandulyl diphosphate synthase (LPPS)) catalyzing the biosynthesis of irregular monoterpenes in these plants have not been described. Here, we report the isolation and functional characterization of a novel *cis*-prenyl diphosphate synthase cDNA, termed *Lavandula x intermedia* lavandulyl diphosphate synthase (*LiLPPS*), through a homology-based cloning strategy. The *LiLPPS* ORF, encoding for a 305-amino acid long protein, was expressed in *Escherichia coli*, and the recombinant protein was purified by nickel-nitrilotriacetic acid affinity chromatography. The approximately 34.5-kDa bacterially produced protein specifically catalyzed the head-to-middle condensation of two dimethylallyl diphosphate units to LPP *in vitro* with apparent K_m and k_{cat} values of $208 \pm 12 \mu\text{M}$ and 0.1 s^{-1} , respectively. *LiLPPS* is a homodimeric enzyme with a sigmoidal saturation curve and Hill coefficient of 2.7, suggesting a positive co-operative interaction among its catalytic sites. *LiLPPS* could be used to modulate the production of lavandulol and its derivatives in plants through metabolic engineering.

Monoterpenes, the C_{10} class of the isoprenoids, are derived from the universal terpene building blocks isopentenyl diphosphate (IPP)³ and dimethylallyl diphosphate (DMAPP) predom-

inantly synthesized through the 2-C-methyl-D-erythritol 4-phosphate metabolic pathway in plants (1). *En route* to monoterpene synthesis IPP and DMAPP, or two DMAPP units, can be condensed to form structurally diverse branch point C_{10} precursor molecules (2). The diversity of these molecules arises from the capability of prenyl diphosphate synthase enzymes (PDPSs) to condense isoprenes in head-to-tail or non-head-to-tail orientations (3, 4) and outcomes with *cis* or *trans* geometric configurations (5). For example, the head-to-tail coupling of two isoprene units to geranyl diphosphate (C_{10} ; GPP) or its cisoid isomer neryl diphosphate (C_{10} ; NPP) is catalyzed by geranyl diphosphate synthase (GPPS) and neryl diphosphate synthase (NPPS), respectively. The non-head-to-tail condensation of isoprene units to lavandulyl diphosphate (C_{10} ; LPP) and chrysanthemyl diphosphate (C_{10} ; CPP), on the other hand, is catalyzed by lavandulyl diphosphate synthase (LPPS) and chrysanthemyl diphosphate synthase (CPPS), respectively (Fig. 1). The final stage of monoterpene synthesis, transforming and elaborating the different precursor molecules to monoterpenes, is catalyzed by another group of enzymes called monoterpene synthases (mTPSs).

The head-to-tail condensation of IPP and DMAPP and the enzymes catalyzing these reactions are the most common in nature. Thus, monoterpenes derived from GPP and NPP such as linalool, 1,8-cineole, limonene, and so forth, are widely distributed and are referred to as “regular monoterpenes.” Subsequently, their biosynthetic route is well established, and cDNAs encoding for GPPS (6–10), NPPS (11), and mTPSs capable of

* This work was supported through grants or in-kind contributions by the University of British Columbia Okanagan, Investment Agriculture Foundation of British Columbia, National Research Council Plant Biotechnology Institute through the NAPGEN program, and Genome British Columbia (to S. S. M.) and by the Natural Sciences and Engineering Research Council of Canada (to S. S. M. and M. R. R.).

[5] This article contains supplemental Figs. S1–S3 and Table S1.

¹ Supported by the Pacific Century Graduate Scholarships from the province of British Columbia through the Ministry of Advanced Education.

² To whom correspondence should be addressed: Dept. of Biology, University of British Columbia, 3333 University Way, Kelowna, BC V1V 1V7, Canada. E-mail: soheil.mahmoud@ubc.ca.

³ The abbreviations used are: IPP, isopentenyl diphosphate; CIP, calf intestinal alkaline phosphatase; CPP, chrysanthemyl diphosphate; CPPS, CPP synthase; dDPPS, dehydrololichol diphosphate synthase; DMAPP, dimethylallyl diphosphate; EO, essential oil; EST, expressed sequence tag; FPP, farnesyl diphosphate; FPPS, FPP synthase; GGPPS, geranylgeranyl diphosphate synthase; GPP, geranyl diphosphate; GPPS, GPP synthase; LiCINS, *L. x intermedia* 1,8-cineole synthase; *LiLPPS*, *L. x intermedia* LPPS; LPP, lavandulyl diphosphate; LPPS, LPP synthase; mTPS, monoterpene synthase; NPP, neryl diphosphate; NPPS, NPP synthase; PDP, prenyl diphosphate; PDPS, PDP synthase.

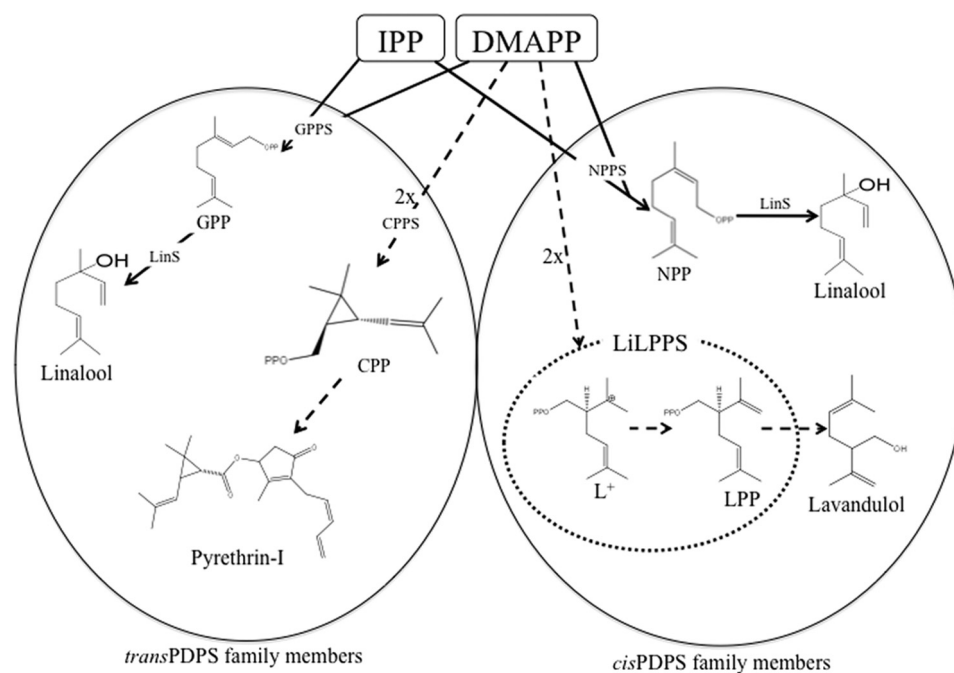


FIGURE 1. **Schematic representation of IPP and DMAPP coupling reactions catalyzed by typical *trans*- and *cis*-PDPS family members.** The newly identified enzyme and the reaction it catalyzed are circled (adapted from Thulasiram *et al.* (3)). CPP, chrysanthemyl diphosphate; CPPS, chrysanthemyl diphosphate synthase; DMAPP, dimethylallyl diphosphate; IPP, isopentenyl diphosphate; GPP, geranyl diphosphate; GPPS, geranyl diphosphate synthase; LPP, lavandulyl diphosphate; LiLPPS, *L. x intermedia* lavandulyl diphosphate synthase; LinS, linalool synthase; NPP, neryl diphosphate; and NPPS, neryl diphosphate synthase.

transforming GPP and/or NPP into core monoterpenes have been described from diverse plant species (12, 13). GPPS, a *trans*-PDPS, and NPPS, a *cis*-PDPS, elongate the linear prenyl chain by coupling DMAPP with IPP through a chain elongation (c1'-4) reaction to generate GPP and NPP, respectively (3). Despite catalyzing the same reaction, however, GPPSs and NPPSs are more distantly related to one another than they are to PDPSs of similar geometric outcomes. GPPSs share high sequence similarity with *trans*-PDPSs catalyzing the higher order terpene precursors and are distinguished by two aspartate-rich conserved motifs, DDX₂₋₄D and (N/D)DXXD. These motifs serve as a substrate and divalent metal ion cofactor, often Mg²⁺, binding sites for the carbocation rearrangement-mediated condensation reactions (2, 5). A third conserved motif, the CXXXC motif (where X is any hydrophobic residue), is present in heterodimeric PDPSs (14). Heterodimeric PDPSs, like the GPPSs cloned from *Mentha x piperita* (8), *Salvia miltiorrhiza* (15) etc., are enzymes constituted of two subunits (large and small) which interact through the CXXXC conserved motif to be catalytically active. NPPSs and other *cis*-PDPSs, on the other hand, do not necessarily retain the above motifs but share five conserved regions designated as Regions I–V. In particular, the aspartate residue in Region IV and the glutamate residue of Region V are catalytically essential (16, 17).

PDPSs catalyzing non-head-to-tail coupling reactions, and monoterpenes derived from LPP and CPP such as lavandulol and pyrethrins, respectively, are encountered less frequently in nature (18–20). Irregular monoterpenes, like pyrethrins, are the major ingredients in leading botanical and EPA-certified insecticides (21, 22). Lavandulol and its ester derivative lavandulyl acetate were identified in pheromones of major insect

pests and are subsequently used in artificial pheromone preparations to disrupt the mating behaviors of economically important pests (23, 24). Yet, little is known about the biosynthetic pathways leading to these monoterpenes and their derivatives. Only two cDNAs encoding for CPPSs, both *trans*-PDPS family members, have been isolated and functionally characterized from *Chrysanthemum cinerariaefolium* (20) and *Artemisia tridentata* ssp. *spiciformis* (25) so far. CPPSs catalyze predominantly the cyclopropanation (c1'-2-3) reaction in which the non-head-to-tail condensation of two DMAPP molecules generates the pyrethrin branch point intermediate, CPP. In addition to their major product, the *A. tridentata* CPPS and its chimeric derivatives were found to catalyze the non-head-to-tail coupling of two DMAPP molecules through branching (c1'-2) to generate LPP (3, 4). LPP is the branch point precursor of monoterpenes with head-to-middle condensed PDP backbones, such as lavandulol and lavandulyl acetate (19). It is also the source of the lavandulyl side group of sophoraflavanone G in *Sophora flavescens* Ait (26) that determines their antitumor (27) and phospholipase C γ 1 inhibition properties (28). To our knowledge a wild type LPPS gene has not been described from plants or other organisms.

Essential oils (EOs) of the genus *Lavandula* (lavenders) are constituted primarily of a few "regular" monoterpenes and their derivatives. For example, the economically important EOs derived from *L. angustifolia* and *L. x intermedia* species, contain large amounts of linalool, linalool acetate, and 1,8-cineole. Consequently, these oils are industrially utilized as ingredients of various cosmetic and antiseptic products (29). The biosynthetic pathway leading to these monoterpenes from IPP and DMAPP has been defined both experimentally (30–32) and

TABLE 1

Oligonucleotides used in this study

Primers	Sequences
<i>LiLPPS</i> set I	F: 5'-CACTCATATGGCATTCCTGCAGTTACC-3' R1: 5'-CTCTTCATGAATTCCTTTTCGTTACCCG-3'
<i>LiLPPS</i> set II	F: 5'-CACTCATATGGCATTCCTGCAGTTACC-3' R2: 5'-AATTCCTCTCATGAATTCCTTTTCGTTACCCG-3'

through *in silico* analysis of *Lavandula* EST databases (30, 31, 33). In this regard, four cDNAs encoding for mTPSs that transform GPP and NPP into linalool, 1,8-cineole, limonene, and β -phellandrene *in vitro* have been cloned from *L. angustifolia* and *L. x intermedia* species (30–32). However, lavender EOs, particularly *L. x intermedia* species, also contain the irregular monoterpene lavandulol and its ester derivative lavandulyl acetate (34) whose biosynthetic origin has not yet been investigated. Here, we report the isolation and functional characterization of a novel *cis*-PDPS cDNA encoding for LPPS, an enzyme that condenses two DMAPP molecules to generate the lavandulol branch point precursor LPP *in vitro*, from a *L. x intermedia* oil gland cDNA library.

EXPERIMENTAL PROCEDURES

***LiLPPS* Candidate Selection**—Our group recently reported the construction of a cDNA library and its corresponding annotated expressed sequence tag (EST) database from *L. x intermedia* cv. Grosso secretory cells of oil glands, tissues specialized for EO biosynthesis and secretion (31). All PDPS homologs in the database were retrieved by searching the EST database using the strings “diphosphate synthase” and “pyrophosphate synthase.” We then synchronized the search results and manually excluded EST homologs known to be involved in regular terpene biosynthesis including GPPS, *trans*-farnesyl diphosphate synthase (*trans*-FPPS), and *trans*-geranylgeranyl diphosphate synthase (*trans*-GGPPS), and PDPS homologs that are not involved in terpene biosynthesis. This led us to acquire a novel *cis*-PDPS homolog contig that was later determined to be *L. x intermedia* lavandulyl diphosphate synthase (*LiLPPS*). The transcriptional expression pattern of this contig and previously described mTPSs throughout *L. x intermedia* cv. Grosso flower developmental stages was assessed by microarray analysis using the Agilent oligonucleotide-based microarray technology, through services provided by the University Health Network Microarray Centre (Toronto, ON, Canada). The three floral developmental stages were unopened buds, anthesis, and mature flowers in which 30% of the buds were in bloom (for photographic description see Ref. 33). After validating the microarray data using standard PCR, we selected the contig for further detailed analysis.

Cloning, Protein Expression, and Enrichment of *LiLPPS*—Glandular trichome secretory cells were isolated from mature flowers of *L. x intermedia* cv. Grosso plants grown at the University of British Columbia, Okanagan campus lavender field following a previously described modified glass bead abrasion method (31). Total RNA was extracted from 100 mg of the tissue using an RNA extraction kit (OMEGA bio-tek) and reverse transcribed in a reaction containing the oligo(dT) primer (Fisher Scientific) and *M-MuLV* reverse transcriptase enzyme (New England Biolabs) following the manufacturer's

directions. The putative *LiLPPS* ORF was amplified with the full-length cloning primer sets (Table 1) and *iProof*[®] High-Fidelity DNA Polymerase (Bio-Rad). The PCR program used was 95 °C for 5 min, followed by 37 cycles of 95 °C for 1 min, 58 °C for 30 s, and 72 °C for 1 min, and a 5-min final extension at 72 °C. The amplified fragments were cloned into the *NdeI*/*EcoRI* sites of the pET41b(+) expression vector and expressed in *Escherichia coli* BL21(DE3) strain (EMD Chemicals, Darmstadt, Germany) following previously described procedures (30, 31). Except for the bind buffer that was slightly modified (0.5 M NaCl, 50 mM KH₂PO₄, pH 8.0) the procedure described in the aforementioned papers was followed to enrich the expressed protein. Sequence information for *LiLPPS* was deposited in the NCBI public data bank with the accession number JX985358.

***LiLPPS* Product Assay and EO Constituent Identification**—Initial *in vitro* enzyme activity assays were performed in a 500- μ l reaction volume containing the assay buffer (50 mM Tris-HCl, 5% glycerol, 1 mM MnCl₂, 1 mM MgCl₂, pH 8.0), 1 mM DTT, 40 μ M IPP, and 40 μ M DMAPP (Echelon, Salt Lake City, UT), and 2.5–50 μ g of *LiLPPS*. After a 2-h incubation at 30 °C, the reaction mix was heated at >80 °C for 10 min and kept on ice for 2 min. Then 30 units of calf intestinal alkaline phosphatase (CIP; New England Biolabs) were added to the reaction mix, overlaid by 500 μ l of pentane and incubated overnight at 32.5 °C to hydrolyze the prenyl product. GPP and NPP standards (Echelon) were also hydrolyzed in the same reaction mix and conditions, as a control of the hydrolysis reaction. The reaction was stopped by vigorous vortexing followed by flash freezing in liquid nitrogen and stored in a –80 °C freezer until analyzed. Assay product identification and quantification, and EO extraction and quantification were performed by gas chromatography-mass spectrometry (GC-MS) following procedures described previously (32, 35). Purified protein extract of *E. coli* BL21(DE3) strain transformed with empty pET41b(+) expression vector, *i.e.* without insert, was also assayed under the same conditions as a negative control.

Biochemical Assay—Biochemical characterization of *LiLPPS* was performed following the procedure described above with slight modifications: the reaction volume was reduced to 125 μ l, 2.5 μ g of *LiLPPS* was used, and assays were incubated at 37 °C for 1 h after adding CIP. Six temperature levels (25, 27.5, 30, 32.5, 35, and 37.5 °C) were tested to determine *LiLPPS* optimum temperature, and the optimum pH was determined using MES and MOPS buffers at pH 5.5, 6.0, 6.5, 7.0, 7.5, 8.0, and 8.5. The kinetic properties of *LiLPPS* were deduced from LPP accumulation data in assays with increasing DMAPP concentrations (6.25, 12.5, 25, 50, 100, 150, 200, 300, 450, and 600 μ M) at the optimal conditions. Prism software version 5.0d (GraphPad Software, Inc., La Jolla, CA) was used to fit the data into a sigmoidal substrate concentration-dependent enzyme response

curve ($y = a \cdot b^x / (c^x + b^x)$), and to calculate the V_{\max} , K_m , and k_{cat} values. Substrate specificity of the enzyme was determined from the type and amount of reactants consumed *versus* product accumulated in assays containing a constant IPP concentration (150 μM) combined with various DMAPP levels (6.25–200 μM) under the optimized conditions. We also tested LPP as a potential substrate for *L. x intermedia* 1,8-cineole synthase (LiCINS), an enzyme that primarily produced 1,8-cineole from both GPP and NPP (31).

Phylogenetic Relationship Analysis—LiLPPS was aligned with *cis*-PDPs isolated from tomato using the default parameters of the ClustalW alignment tool available at the EBI platform. The phylogenetic relation of LiLPPS with other PDPs was constructed using the Jukes-Cantor genetic distance model and UPGMA tree building method of Geneious Tree Builder module (Geneious 5.0.3 software, Auckland, New Zealand).

RESULTS

Lavandula x intermedia cv. Grosso EO Composition—GC-MS analysis of EO distilled from *L. x intermedia* cv. Grosso floral tissues profiled the following terpenes in their respective abundance order: linalool, linalool acetate, 1,8-cineole, camphor, isoborneol, lavandulyl acetate, α -terpineol, α -bisabolol, α -cadinol, β -ocimen, β -caryophyllene, lavandulol, limonene, δ -carene, myrcene, geraniol, nerol, neryl acetate, and a few other minor products (supplemental Fig. S1). Except for the irregular monoterpenes lavandulol and lavandulyl acetate, which are derived from LPP, the remaining EO mono- and sesquiterpene constituents arise from the corresponding linear precursors GPP and *trans*-FPP, respectively.

PDPs Candidate Selection and Sequence Analysis—Searching our EST library using the string pyrophosphate synthase as a query identified 11 different prenyltransferase homolog unigenes whereas the string diphosphate synthase identified 31. Duplicate search results and prenyltransferases with no known involvement in terpene biosynthesis (e.g. ribose phosphate pyrophosphokinase and cytidine diphosphate diacylglycerol synthase) were disregarded to consolidate the search results. The final synchronized search result identified 25 unigenes that were homologous to known PDPs involved in terpene biosynthesis (supplemental Table S1). From these sequences 12 were homologous to PDPs involved in the 2-C-methyl-D-erythritol 4-phosphate pathway, eight were homologous to *trans*-PDPs (GPPs, FPPs, GGPPs), and one was homologous to bornyl diphosphate synthase. The remaining four candidates were homologous to *cis*-PDPs. Two of these homologs corresponded to dehydrodolichol diphosphate synthase (dDPPS) genes, which catalyzes the prenyl chain elongation reaction to produce the polyprenyl backbone of dolichol. The other unigenes, one of which belonged to a contig with 18 EST members and the other was a singleton, exhibited significant homology to NPPS (FJ797956) and *cis*-FPPS (ACJ38408) from cultivated (*Solanum lycopersicum*) (11) and wild tomato (*Solanum habrochaites*) (17), respectively. The singleton was later determined to be a splice variant of the contig and was disregarded.

The *trans*-PDPs and dDPPS homologs were anticipated to be present in a database derived from *L. x intermedia* secretory cells because they catalyze reactions that are consistent with EO

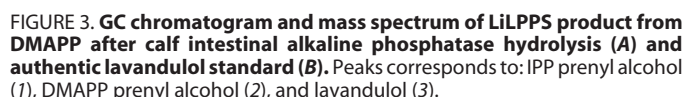
composition in this tissue. However, given the fact that GPP is the preferred substrate for regular monoterpenes (11, 36) and typical sesquiterpenes synthesized from *cis*-FPP (17) were not detected in the *L. x intermedia* EO (supplemental Fig. S1), the identification of NPPs and *cis*-FPPs homologs was unforeseen. In addition, the results of our transcript-profiling experiment indicated that the transcriptional expression of this EST paralleled those of other lavender mTPSs (31) and was developmentally regulated in *L. x intermedia* flowers (data not shown). Therefore, we decided to further investigate this contig which was later determined to be *LiLPPS*. The ORF of LiLPPS was expressed in *E. coli* BL21(DE3) cells for further analysis.

The ORF of *LiLPPS* is 918 nucleotides long encoding a 305-amino acid protein that includes a short N-terminal plastidial transit peptide (30 amino acids) and shares 66.4 and 66% sequence similarity with NPPs and *cis*-FPPs of tomato, respectively. Like many other *cis*-PDPs, LiLPPS lacks the two aspartate rich *trans*-PDPs signature motifs DDX₂₋₄D and (N/D)DXXD but maintains all five semiconserved regions (I–V) that define the *cis*-PDPs (Fig. 2). In particular, the catalytically important aspartate and glutamate residues of Regions IV and V were conserved in LiLPPS at 201 and 276 positions from the N-terminal, respectively (Fig. 2). Multiple alignment of LiLPPS and its splice variant, both at the nucleotide and amino acid level, revealed that the splice variant lacks a stretch of 22 amino acids in the middle of its ORF that included a portion of the conserved region III (Fig. 2). Repeated attempts to amplify the splice variant from reverse transcribed total mRNA isolated from *L. x intermedia* glandular secretory cells failed possibly due to the low abundance of the corresponding cDNA. It is also possible that the splice variant singleton was an artifact that resulted from sequence assembly errors during database construction. Therefore, only the full-length contig was considered for further investigation.

Cloning, Expression, and Functional Characterization of LiLPPS—The approximately 34.5-kDa recombinant LiLPPS was successfully expressed in bacterial cells and enriched using the nickel-nitrilotriacetic acid-agarose affinity chromatography system. Incubation of the purified recombinant protein with IPP and DMAPP followed by the hydrolysis of the assay mix by CIP resulted in the production of lavandulol as the only product (Fig. 3A). The identity of the product was determined by comparing its mass spectrum and retention time with those of an authentic lavandulol standard (Sigma) (Fig. 3B). Given that the alkaline CIP-mediated hydrolysis of LPP is known to yield lavandulol (3, 4, 19), we concluded that LiLPPS catalyzes the synthesis of LPP from isoprene units. In this respect, the hydrolysis of GPP and NPP with CIP under the same conditions produced geraniol and nerol, respectively, as anticipated. Hydrolysis of the control assay mixes contained only the prenyl alcohol derivatives of IPP (buten-1-ol, <3-methyl-3) and DMAPP (buten-1-ol, <3-methyl-2) (Fig. S2, A and B).

Substrate Specificity and Kinetic Properties of LiLPPS—When LiLPPS was incubated with IPP alone, detectable amounts of lavandulol or any other terpene prenyl alcohols were not identified after the alkaline hydrolysis step. We also observed that assay reactions containing 5 μM each IPP and DMAPP, or 5 μM DMAPP alone produced equivalent amounts

FIGURE 2. **Multiple alignment of LiLPPS with NPPS and *cis*-FPPS of tomato.** Bars indicate the five conserved regions (I–V), and the aspartate and glutamate residues in Regions IV and V, respectively, are boxed. Identical amino acid residues are represented by asterisks, conserved amino acid substitutions are represented by a semicolon, and semiconserved amino acid substitutions are represented by a period. LiLPPS (JX985358), *L. x intermedia* lavandulyl diphosphate synthase; zFPS_SOLHA (B8XA40.1), Z,Z-farnesyl diphosphate synthase from (*S. habrochaites*) and NPPS (NP_001234633.1), neryl diphosphate synthase from (*S. lycopersicum*).



LPP as a Substrate for Regular mTPSs—mTPSs involved in the biosynthesis of regular monoterpenes in lavenders accept both GPP and NPP as *in vitro* substrates. We thus examined the ability of the recombinant LiCINS to utilize LPP as a substrate in standard assay reactions. As anticipated, LiCINS, which produced 1,8-cineole as a major product upon incubation with GPP and NPP (32), did not produce detectable quantities of a product from LPP.

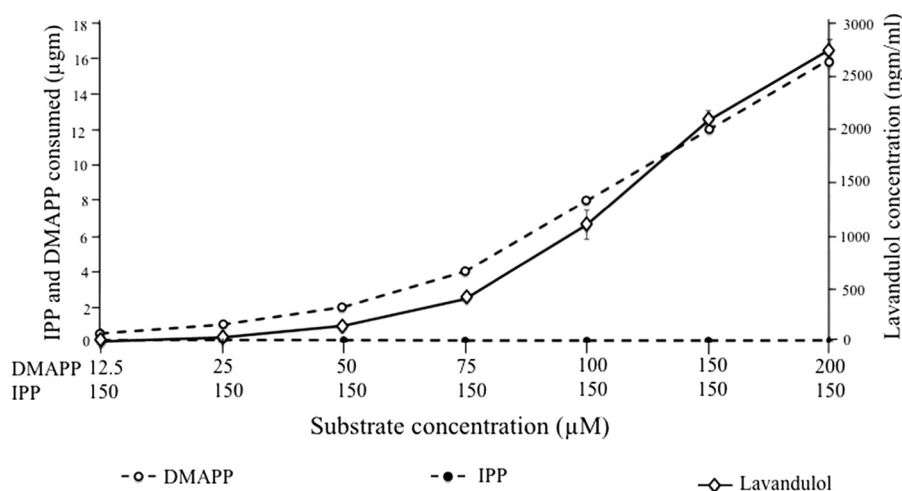


FIGURE 4. LPP accumulation versus DMAPP and IPP consumption ($R^2 = 0.99$, $p < 0.0001$, $n = 2$). Error bars indicate S.D.

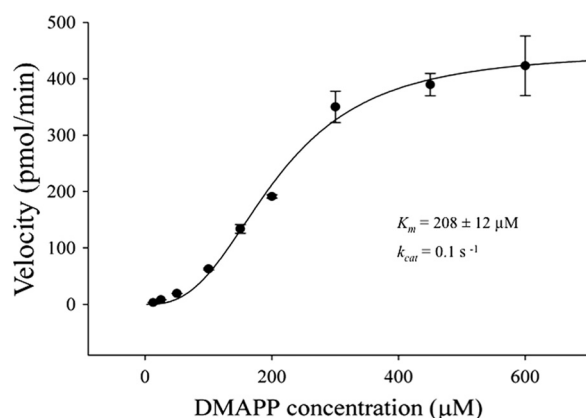


FIGURE 5. Kinetic properties of LiLPPS at increasing DMAPP concentrations. The nonlinear regression equation used to fit LPP accumulation against DMAPP concentrations was $V = V_{\max} * [S]^H / (K_m^H + [S]^H)$ ($n = 2$). Error bars indicate S.D.

DISCUSSION

Like those of many other plants, the EOs of lavenders are dominated by regular monoterpenes synthesized through the head-to-tail condensation of isoprene units. It was therefore not surprising that the EST database derived from *L. x intermedia* secretory cells, tissues specialized for EO biosynthesis, contained a substantial number of ESTs corresponding to enzymes involved in the biosynthesis of regular monoterpenes (supplemental Table S1). Given that *L. x intermedia* plants also accumulate irregular monoterpenes, particularly the LPP derivatives lavandulol and lavandulyl acetate (19) (supplemental Fig. S1), it was also not surprising to find ESTs related to irregular monoterpene biosynthesis, including the cloned LiLPPS, in our database. However, it was somewhat unexpected to find a *cis*-PDPS in *L. x intermedia* glandular trichomes because (i) all known *Lamiaceae* PDPSs (6–10), including those of *Lavandula* (30–32), are of the *trans*-PDPS type. (ii) The only reported PDPSs with confirmed role in irregular monoterpene biosynthesis, CPPSs (3, 4, 20), also belong to the *trans*-PDPSs family. The previously reported *cis*-PDPSs, NPPS and *cis*-FPPS, catalyzed the biosynthesis of regular (and not irregular) mono- and sesquiterpene precursors, respectively, in tomato glandular trichomes.

The *cis* and *trans* PDPS family members often share higher sequence similarity with each other irrespective of the genetic relatedness among donor organisms (5, 16). This is contrary to some other enzymes involved in terpene biosynthesis, particularly terpene synthases. Typically, terpene synthases of a given species are more related to one another than to those of distantly related species, even if they catalyze the same reaction. For example β -phellandrene synthase of *L. angustifolia* shares 48 and 47% identity with linalool and limonene synthases of the same species, respectively. However, the gene only shares 31 and 25% similarity with β -phellandrene synthases of grand fir and tomato, respectively (30). In this study, we observed that *L. x intermedia trans*-PDPS homologs (GPPS, FPPS, and GGPPS) share a higher sequence similarity among each other and with other *trans*-PDPSs cloned from genetically unrelated species than they do with LiLPPS. LiLPPS is closely related to NPPS and *cis*-FPPS of cultivated (*S. lycopersicum*) (11) and wild (*S. habrochaites*) (17) tomato, respectively. The phylogenetic tree presented in Fig. 6 clearly suggests that LiLPPS together with NPPS and *cis*-FPPS diverged very early from *trans*-PDPSs.

LiLPPS catalyzes the head-to-middle condensation of two DMAPP molecules to synthesize the linear lavandulol branch point precursor, LPP (C_{10}). As demonstrated by Thulasiram *et al.* (3, 4), LPP synthesis proceeds via rearrangement of the double bond position to create the highly reactive carbocation intermediate lavandulyl cation (L^+). L^+ will eventually be transformed to LPP after a mandatory proton loss (Fig. 1). LiLPPS catalyzes these reactions with an apparent K_m and k_{cat} of $208 \pm 12 \mu\text{M}$ and 0.1 s^{-1} , respectively. These catalytic properties are within the range of previously reported *cis*-PDPSs including NPPS, which has a K_m and k_{cat} of $177 \mu\text{M}$ and 0.2 s^{-1} , respectively (11). The K_m and k_{cat} values of the aromatic prenyltransferase cloned from fungi were $325 \mu\text{M}$ and 0.03 s^{-1} , respectively (39). Unlike other PDPSs, LiLPPS displayed a sigmoidal saturation curve (Fig. 5). This is a typical feature of enzymes with multiple substrates, in which the binding of the first substrate affects the affinity of the enzyme for the second substrate through conformational changes or stabilization of the active pocket environment (40). LiLPPS, like any other typical PDPS enzyme, has binding sites for a divalent metal ion

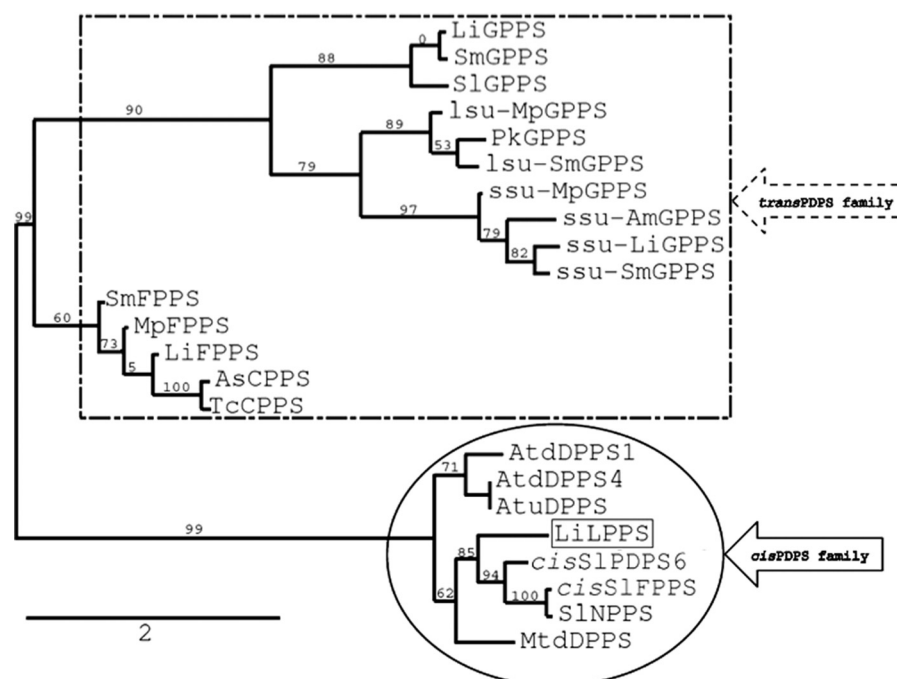


FIGURE 6. **Phylogenetic relationship and classification of prenyltransferases.** Prenyltransferases within the same class share a minimum of 50% amino acid identity. The *trans*-PDPS family members are boxed with a broken line, *cis*-PDPS family members are circled with a solid line, and the prenyltransferase described in this article is boxed with a solid line. The scale bar represents amino acid substitutions per site, and numbers represent the branch support values in percentage. Accession numbers of prenyltransferases used to generate the phylogenetic tree are: AsCPPS, AY308478.1; AtdDPPS1, NP_565551.1; AtdDPPS4, NP_568883.1; AtuDPPS, AAM67372.1; *cis*-SlFPPS, B8XA40.1; *cis*-SlPDPS6, AFW98430.1; LiLPPS, JX985358; lsu-MpGPPS, AAF08793.1; lsu-SmGPPS, AEZ55681.1; MpFPPS, AAK63847.1; MtdDPPS, XP_003615624.1; PkGPPS, AAW66658.1; SmFPPS, ABV08819.1; SmGPPS, ACR19637.1; SIGPPS, NP_001234302.1; SINPPS, NP_001234633.1; ssu-AmGPPS, AAS82859.1; ssu-LiGPPS, JX985359; ssu-MpGPPS, AAF08792.1; ssu-SmGPPS, AEZ55678.1; and TcCPPS, HQ235057.1.

cofactor and two substrates (5, 16). PDPSs accepting IPP and DMAPP (e.g. GPPS or NPPS) can be saturated with one of the substrates and forced to follow Michaelis-Menten kinetics typical of single substrate enzymes for the other substrate. Because DMAPP was the only substrate for LiLPPS, saturating one site was not an option. Thus, plotting LiLPPS product (LPP) accumulation against increasing substrate (DMAPP) concentrations assumed a sigmoidal saturation curve with a Hill coefficient (H) value of 2.7. The positive Hill coefficient value (2.7) indicates a positive co-operativity among the binding pockets.

If LPP was a condensation result of IPP and DMAPP, an equimolar consumption of the two isoprenes would be expected in our assays. However, LPP production was independent of IPP and required only DMAPP. In our assays, a reduction in DMAPP supply resulted in an equivalent reduction in LPP accumulation. However, reducing the concentration or excluding IPP from the reaction did not alter LPP production. This result was also confirmed when IPP was provided at a constant high concentration level (150 μ M) while the amount of DMAPP was increased progressively (6.25–200 μ M), and the reaction was allowed to run until LPP synthesis seized or DMAPP molecules were nearly consumed. At all IPP and DMAPP concentration combinations assayed, IPP consumption remained very close to 0, whereas that of DMAPP increased in parallel to the amount of LPP synthesized (Fig. 4). This outcome indicated that, like the CPPS enzymes reported by Thulasiram *et al.* (4) and Rivera *et al.* (20), LiLPPS utilizes DMAPP as the only substrate to synthesize LPP. The structural features of LiLPPS underlying this catalytic property or resi-

dues involved in DMAPP recognition and c1'-2 coupling reaction catalysis are yet to be determined. Our results, however, suggest that the active sites of LiLPPS selectively bind two DMAPP (and not IPP) units and position them in such a way that the first carbon atom of one unit is in close proximity to the second carbon of the other to facilitate the c1'-2 bond formation. One possibility is that LiLPPS preferentially recognizes DMAPP by identifying its double bond position. It is also possible that the position of the double bond in IPP is not favorable for head-to-middle condensation.

With >55,000 members, isoprenoids are the most structurally and stereochemically diverse biochemical compounds known to mankind (42). Much of this diversity has been attributed to the astounding mechanistic heterogeneity and promiscuity of terpene synthases. PDPSs, *cis* or *trans*, also play a major role in the structural diversity of isoprenoids by providing intermediate precursor molecules of varying chain length (C_{10} , C_{15} , C_{20} , C_{30} , etc.) destined for different isoprenoid groups. In addition, PDPSs generate the structurally distinct C_{10} precursor molecules GPP/NPP, LPP, CPP, maconelliyl diphosphate (C_{10}) or planococcyll diphosphate (C_{10}) by simply changing the position of the carbon-carbon bond (3,4, 20). These linear precursors are then elaborated upon by mTPSs to create various monoterpenes (42, 43). In *Lavandula*, GPP and LPP are the linear precursors for the biosynthesis of regular and irregular monoterpenes, respectively (30–32).

In conclusion, through the identification and functional characterization of LiLPPS, a novel *cis*-PDPS, we have elucidated the biosynthetic origin of irregular monoterpene constit-

uents of *Lavandula* EOs. To our knowledge, this is the first report of a *cis*-PDPS involved in the biosynthesis of irregular monoterpenes. In addition, *LiLPPS* is the first wild type gene that catalyzes the unusual head-to-middle condensation of two DMAPP molecules to synthesize LPP (C_{10}) as its primary function. The elucidation of this pathway enables researchers to further investigate the biosynthesis of irregular monoterpenes in lavenders and other plants. Further, the cloned gene could be used to modulate the accumulation of lavandulol, lavandulyl acetate, and prenylated metabolites with a lavandulyl group to a desired level through metabolic engineering (44).

Acknowledgment—We thank Mariana Galata for help with manuscript preparation.

REFERENCES

- Croteau, R., Kutchan, T., and Lewis, N. (2000) in *Biochemistry and Molecular Biology of Plants* (Gruissem, W., and Jones, R., eds) pp. 1250–1318, American Society of Plant Biologists, Rockville, MD
- Walsh, C. T. (2007) Revealing coupling patterns in isoprenoid alkylation biocatalysis. *ACS Chem. Biol.* **2**, 296–298
- Thulasiram, H. V., Erickson, H. K., and Poulter, C. D. (2008) A common mechanism for branching, cyclopropanation, and cyclobutanation reactions in the isoprenoid biosynthetic pathway. *J. Am. Chem. Soc.* **130**, 1966–1971
- Thulasiram, H. V., Erickson, H. K., and Poulter, C. D. (2007) Chimeras of two isoprenoid synthases catalyze all four coupling reactions in isoprenoid biosynthesis. *Science* **316**, 73–76
- Liang, P. H., Ko, T. P., and Wang, A. H. (2002) Structure, mechanism and function of prenyltransferases. *Eur. J. Biochem.* **269**, 3339–3354
- Bouvier, F., Suire, C., d'Harlingue, A., Backhaus, R. A., and Camara, B. (2000) Molecular cloning of geranyl diphosphate synthase and compartmentation of monoterpene synthesis in plant cells. *Plant J.* **24**, 241–252
- Burke, C., and Croteau, R. (2002) Geranyl diphosphate synthase from *Abies grandis*: cDNA isolation, functional expression, and characterization. *Arch. Biochem. Biophys.* **405**, 130–136
- Burke, C. C., Wildung, M. R., and Croteau, R. (1999) Geranyl diphosphate synthase: cloning, expression, and characterization of this prenyltransferase as a heterodimer. *Proc. Natl. Acad. Sci. U.S.A.* **96**, 13062–13067
- Schmidt, A., and Gershenzon, J. (2008) Cloning and characterization of two different types of geranyl diphosphate synthases from Norway spruce (*Picea abies*). *Phytochemistry* **69**, 49–57
- Tholl, D., Kish, C. M., Orlova, I., Sherman, D., Gershenzon, J., Pichersky, E., and Dudareva, N. (2004) Formation of monoterpenes in *Antirrhinum majus* and *Clarkia breweri* flowers involves heterodimeric geranyl diphosphate synthases. *Plant Cell* **16**, 977–992
- Schillmiller, A. L., Schauvinhold, I., Larson, M., Xu, R., Charbonneau, A. L., Schmidt, A., Wilkerson, C., Last, R. L., and Pichersky, E. (2009) Monoterpenes in the glandular trichomes of tomato are synthesized from a neryl diphosphate precursor rather than geranyl diphosphate. *Proc. Natl. Acad. Sci. U.S.A.* **106**, 10865–10870
- Chen, F., Tholl, D., Bohlmann, J., and Pichersky, E. (2011) The family of terpene synthases in plants: a mid-size family of genes for specialized metabolism that is highly diversified throughout the kingdom. *Plant J.* **66**, 212–229
- Degenhardt, J., Köllner, T. G., and Gershenzon, J. (2009) Monoterpene and sesquiterpene synthases and the origin of terpene skeletal diversity in plants. *Phytochemistry* **70**, 1621–1637
- Wang, G., and Dixon, R. A. (2009) Heterodimeric geranyl(geranyl)diphosphate synthase from hop (*Humulus lupulus*) and the evolution of monoterpene biosynthesis. *Proc. Natl. Acad. Sci. U.S.A.* **106**, 9914–9919
- Ma, Y., Yuan, L., Wu, B., Li, X., Chen, S., and Lu, S. (2012) Genome-wide identification and characterization of novel genes involved in terpenoid biosynthesis in *Salvia miltiorrhiza*. *J. Exp. Bot.* **63**, 2809–2823
- Kharel, Y., and Koyama, T. (2003) Molecular analysis of *cis*-prenyl chain elongating enzymes. *Nat. Prod. Rep.* **20**, 111–118
- Sallaud, C., Rontein, D., Onillon, S., Jabès, F., Duffé, P., Giacalone, C., Thoraval, S., Escoffier, C., Herbette, G., Leonhardt, N., Causse, M., and Tissier, A. (2009) A novel pathway for sesquiterpene biosynthesis from *Z,Z*-farnesyl pyrophosphate in the wild tomato *Solanum habrochaites*. *Plant Cell* **21**, 301–317
- Dewick, P. M. (2009) *Medicinal Natural Products: A Biosynthetic Approach*, 2nd Ed., John Wiley and Sons, West Sussex, England
- Epstein, W. W., Klobus, M. A., and Edison, A. S. (1991) Irregular monoterpene constituents of *Artemisia tridentata* cana: the isolation, characterization, and synthesis of two new chrysanthemyl derivatives. *J. Org. Chem.* **56**, 4451–4456
- Rivera, S. B., Swedlund, B. D., King, G. J., Bell, R. N., Hussey, C. E., Jr., Shattuck-Eidens, D. M., Wrobel, W. M., Peiser, G. D., and Poulter, C. D. (2001) Chrysanthemyl diphosphate synthase: isolation of the gene and characterization of the recombinant non-head-to-tail monoterpene synthase from *Chrysanthemum cinerariaefolium*. *Proc. Natl. Acad. Sci. U.S.A.* **98**, 4373–4378
- Matsuda, K., Kikuta, Y., Haba, A., Nakayama, K., Katsuda, Y., Hatanaka, A., and Komai, K. (2005) Biosynthesis of pyrethrin I in seedlings of *Chrysanthemum cinerariaefolium*. *Phytochemistry* **66**, 1529–1535
- Matsuda, K. (2012) Pyrethrin biosynthesis and its regulation in *Chrysanthemum cinerariaefolium*. *Top. Curr. Chem.* **314**, 73–81
- Franco, J. C., Zada, A., and Mendel, Z. (2009) in *Biorational Control of Arthropod Pests: Application and Resistance Management* (Ishaaya, I., and Horowitz, A. R., eds) pp 233–278, Springer, New York
- Walton, V. M., Daane, K. M., Bentley, W. J., Millar, J. G., Larsen, T. E., and Malakar-Kuenen, R. (2006) Pheromone-based mating disruption of *Planococcus ficus* (Hemiptera: Pseudococcidae) in California vineyards. *J. Econ. Entomol.* **99**, 1280–1290
- Hemmerlin, A., Rivera, S. B., Erickson, H. K., and Poulter, C. D. (2003) Enzymes encoded by the farnesyl diphosphate synthase gene family in the big sagebrush *Artemisia tridentata* ssp. *spiciformis*. *J. Biol. Chem.* **278**, 32132–32140
- Zhao, P., Inoue, K., Kouno, I., and Yamamoto, H. (2003) Characterization of Leachianone G 2"-dimethylallyltransferase, a novel prenyl side-chain elongation enzyme for the formation of the lavandulyl group of sophoraflavanone G in *Sophora flavescens* Ait. cell suspension cultures. *Plant Physiol.* **133**, 1306–1313
- Ko, W. G., Kang, T. H., Kim, N. Y., Lee, S. J., Kim, Y. C., Ko, G. I., Ryu, S. Y., and Lee, B. H. (2000) Lavandulylflavonoids: a new class of *in vitro* apoptogenic agents from *Sophora flavescens*. *Toxicol. In Vitro* **14**, 429–433
- Lee, H. S., Ko, H. R., Ryu, S. Y., Oh, W. K., Kim, B. Y., Ahn, S. C., Mheen, T. I., and Ahn, J. S. (1997) Inhibition of phospholipase C γ 1 by the prenylated flavonoids from *Sophora flavescens*. *Planta Med.* **63**, 266–268
- Woronuk, G., Demissie, Z., Rheault, M., and Mahmoud, S. (2011) Biosynthesis and therapeutic properties of *Lavandula* essential oil constituents. *Planta Med.* **77**, 7–15
- Demissie, Z. A., Sarker, L. S., and Mahmoud, S. S. (2011) Cloning and functional characterization of β -phellandrene synthase from *Lavandula angustifolia*. *Planta* **233**, 685–696
- Demissie, Z. A., Cella, M. A., Sarker, L. S., Thompson, T. J., Rheault, M. R., and Mahmoud, S. S. (2012) Cloning, functional characterization and genomic organization of 1,8-cineole synthases from *Lavandula*. *Plant Mol. Biol.* **79**, 393–411
- Landmann, C., Fink, B., Festner, M., Dregus, M., Engel, K. H., and Schwab, W. (2007) Cloning and functional characterization of three terpene synthases from lavender (*Lavandula angustifolia*). *Arch. Biochem. Biophys.* **465**, 417–429
- Lane, A., Boeckleemann, A., Woronuk, G. N., Sarker, L., and Mahmoud, S. S. (2010) in *Lavender: the Genus Lavandula* (Lis-Balchin, M., ed) pp. 117–123, Taylor & Francis, London
- Lis-Balchin, M. (2002) Lavender essential oil: standardisation, ISO, adulteration and its detection using GC, enantiomeric columns and bioactivity. *Lavender: The Genus Lavandula* 117–123
- Falk, L., Biswas, K., Boeckleemann, A., Lane, A., and Mahmoud, S. S. (2009) An efficient method for the micropropagation of lavenders: regeneration

- of a unique mutant. *J. Essent. Oil Res.* **21**, 225–228
36. Croteau, R., and Karp, F. (1979) Biosynthesis of monoterpenes: preliminary characterization of bornyl pyrophosphate synthetase from sage (*Salvia officinalis*) and demonstration that geranyl pyrophosphate is the preferred substrate for cyclization. *Arch. Biochem. Biophys.* **198**, 512–522
37. Deleted in proof
38. Deleted in proof
39. Haug-Schifferdecker, E., Arican, D., Brückner, R., and Heide, L. (2010) A new group of aromatic prenyltransferases in fungi, catalyzing a 2,7-dihydroxynaphthalene 3-dimethylallyltransferase reaction. *J. Biol. Chem.* **285**, 16487–16494
40. Deleted in proof
41. Chang, T. H., Hsieh, F. L., Ko, T. P., Teng, K. H., Liang, P. H., and Wang, A. H. (2010) Structure of a heterotetrameric geranyl pyrophosphate synthase from mint (*Mentha piperita*) reveals intersubunit regulation. *Plant Cell* **22**, 454–467
42. Christianson, D. W. (2008) Unearthing the roots of the terpenome. *Curr. Opin. Chem. Biol.* **12**, 141–150
43. Gao, Y., Honzatko, R. B., and Peters, R. J. (2012) Terpenoid synthase structures: a so far incomplete view of complex catalysis. *Nat. Prod. Rep.* **29**, 1153–1175
44. Sugiyama, A., Linley, P. J., Sasaki, K., Kumano, T., Yamamoto, H., Shitan, N., Ohara, K., Takanashi, K., Harada, E., Hasegawa, H., Terakawa T., Kuzuyama, T., and Yazaki, K. (2011) Metabolic engineering for the production of prenylated polyphenols in transgenic legume plants using bacterial and plant prenyltransferases. *Metab. Eng.* **13**, 629–637

Plant Biology:

**The Biosynthetic Origin of Irregular
Monoterpenes in *Lavandula*: ISOLATION
AND BIOCHEMICAL
CHARACTERIZATION OF A NOVEL
cis-PRENYL DIPHOSPHATE SYNTHASE
GENE, LAVANDULYL DIPHOSPHATE
SYNTHASE**

Zerihun A. Demissie, Lauren A. E. Erland,
Mark R. Rheault and Soheil S. Mahmoud
J. Biol. Chem. 2013, 288:6333-6341.

doi: 10.1074/jbc.M112.431171 originally published online January 10, 2013

PLANT BIOLOGY

METABOLISM

Access the most updated version of this article at doi: [10.1074/jbc.M112.431171](https://doi.org/10.1074/jbc.M112.431171)

Find articles, minireviews, Reflections and Classics on similar topics on the [JBC Affinity Sites](http://www.jbc.org/).

Alerts:

- [When this article is cited](#)
- [When a correction for this article is posted](#)

[Click here](#) to choose from all of JBC's e-mail alerts

Supplemental material:

<http://www.jbc.org/content/suppl/2013/01/10/M112.431171.DC1.html>

This article cites 36 references, 12 of which can be accessed free at
<http://www.jbc.org/content/288/9/6333.full.html#ref-list-1>