

Angewandte GDCh Chemie

Eine Zeitschrift der Gesellschaft Deutscher Chemiker

www.angewandte.de

Akzeptierter Artikel

Titel: Hollow Carbon Sphere Nanoreactors Loaded with PdCu Nanoparticles: Void-Confinement Effects in Liquid-Phase Hydrogenations

Autoren: Chao Dong, Qun Yu, Run-Ping Ye, Panpan Su, Jian Liu, and Guang-Hui Wang

Dieser Beitrag wurde nach Begutachtung und Überarbeitung sofort als "akzeptierter Artikel" (Accepted Article; AA) publiziert und kann unter Angabe der unten stehenden Digitalobjekt-Identifizierungsnummer (DOI) zitiert werden. Die deutsche Übersetzung wird gemeinsam mit der endgültigen englischen Fassung erscheinen. Die endgültige englische Fassung (Version of Record) wird ehestmöglich nach dem Redigieren und einem Korrekturgang als Early-View-Beitrag erscheinen und kann sich naturgemäß von der AA-Fassung unterscheiden. Leser sollten daher die endgültige Fassung, sobald sie veröffentlicht ist, verwenden. Für die AA-Fassung trägt der Autor die alleinige Verantwortung.

Zitierweise: *Angew. Chem. Int. Ed.* 10.1002/anie.202007297

Link zur VoR: <https://doi.org/10.1002/anie.202007297>

COMMUNICATION

Hollow Carbon Sphere Nanoreactors Loaded with PdCu Nanoparticles: Void-Confinement Effects in Liquid-Phase Hydrogenations

Chao Dong^{+, [a]} Qun Yu^{+, [a,c]} Run-Ping Ye,^[b] Panpan Su,^[b] Jian Liu^{*, [b,c,d,e]} and Guang-Hui Wang^{*, [a,c,d]}

- [a] Dr. C. Dong, Q. Yu, Prof. G.-H. Wang
Key Laboratory of Biofuels, Qingdao Institute of Bioenergy and Bioprocess Technology, Chinese Academy of Sciences
Qingdao, 266101 (China)
E-mail: wanggh@qibebt.ac.cn
- [b] Dr. R.-P. Ye, Dr. P. Su, Prof. J. Liu
State Key Laboratory of Catalysis, Dalian Institute of Chemical Physics, Chinese Academy of Sciences
Dalian, 116023 (China)
E-mail: jianliu@dicp.ac.cn
- [c] Q. Yu, Prof. J. Liu, Prof. G.-H. Wang
University of Chinese Academy of Sciences
Beijing, 100049 (China)
- [d] Prof. J. Liu, Prof. G.-H. Wang
Dalian National Laboratory for Clean Energy
Dalian, 116023 (China)
- [e] Prof. J. Liu
DICP-Surrey Joint Centre for Future Materials, Department of Chemical and Process Engineering, and Advanced Technology Institute
University of Surrey, Guilford, GU2 7XH, UK
E-mail: jian.liu@surrey.ac.uk
- [*] These authors contributed equally to this work.

Supporting information for this article is given via a link at the end of the document.

Abstract: Nanoreactors with hollow structures have attracted great interest in catalysis research due to their void-confinement effects. However, the challenge in unambiguously unraveling these confinement effects is to decouple them from other factors affecting the catalytic behaviors. Here, we synthesize a pair of hollow carbon sphere (HCS) nanoreactors with pre-synthesized PdCu nanoparticles encapsulated inside of HCS (PdCu@HCS) and supported outside of HCS (PdCu/HCS), respectively, while keeping other structural features the same. Based on the two comparative nanoreactors, void-confinement effects in liquid-phase hydrogenation are investigated in a two-chamber reactor. It is found that hydrogenations over PdCu@HCS are shown as shape-selective catalysis, can be accelerated (accumulation of reactants), decelerated (mass transfer limitation) and even inhibited (molecular-sieving effect), respectively; conversion of the intermediate in the void space can be further promoted. Using this principle, a specific imine is selectively produced. This work provides proofs of concept for fundamental catalysis of the hollow nanoreactors.

Hollow structured nanomaterials containing a void space inside a distinct shell have attracted broad interest in the fields of catalysis, energy storage and conversion, biomedicine, etc.,^[1] due to the specific properties determined by their unique structures (e.g., high surface area, accessible void space, tunable porous structure of the shell, etc.). Especially in catalysis, hollow structured nanomaterials with loading the active species on different spatial regions (e.g., exterior/interior surface of the shell, in the shell, in the void space) can be considered as nanoreactors from the perspective of chemical and biomolecular engineering, which has been utilized in a series of heterogeneous catalytic processes.^[2] It is believed that the shell of these hollow nanoreactors, which often demonstrates an enriched porous

structure and high surface area, can sustain a high loading of the active species.^[3] If encapsulating the active species inside the shell, the hollow nanoreactors can protect them against sintering, leaching and aggregating even under harsh reaction conditions.^[4] In addition, the hollow nanoreactors can provide molecular-sieving capability to realize size-selective and poison-resistant catalysis.^[5] Moreover, the void space of the hollow nanoreactors can provide a unique nanospace for storage or confinement of the reactant molecules, which probably induces an accumulation of the reactant molecules and locally alters the hydrodynamics of the nanoreactors (e.g., increasing the retention time of reactant molecules in the cavity).^[6] Besides these advantages, the hollow nanoreactors can be used as ideal models for investigating catalytic mechanism at nanoscale and guiding the rational design of efficient catalysts for practical applications.

During the past decades, many studies have been devoted to unraveling the catalytic properties, in particular the void-confinement effects, of the hollow nanoreactors in liquid-phase reactions.^[2-5] In many cases, enhanced catalytic activities or tunable selectivity over the hollow nanoreactors have been observed compared with their nonhollow analogues, which are ascribed to the void-confinement effects or molecular-sieving effects induced by the hollow structures.^[3-5] The excellent catalytic performances are also often attributed to the void-confinement effects without any comparative analysis, solely because of the existence of the void spaces. In fact, it is not easy to clearly address the void-confinement effects even after comparative analysis with the non-hollow materials, because many other factors are also highly influential for the catalytic properties. For instance, compared with the non-hollow analogues, the synthesis procedures to fabricate the hollow structured nanoreactors can potentially introduce other modifications in the shell structures as

COMMUNICATION

well as the compositions/morphologies of the active species which might further contribute to differences in the catalytic performances.^[5] In addition, it remains a challenge for precisely controlling the consistency of the reaction conditions (e.g., pressure, temperature, stirring speed, etc.) during the individual catalytic tests of the hollow nanoreactors and their non-hollow analogues, which may introduce factors that can also affect the catalytic performances. Therefore, providing both of comparative nanomaterials and reaction system with consistent reaction conditions to decouple the void-confinement effects from other factors is highly required to unambiguously ascribe and understand the void-confinement effects of the hollow structured nanoreactors.

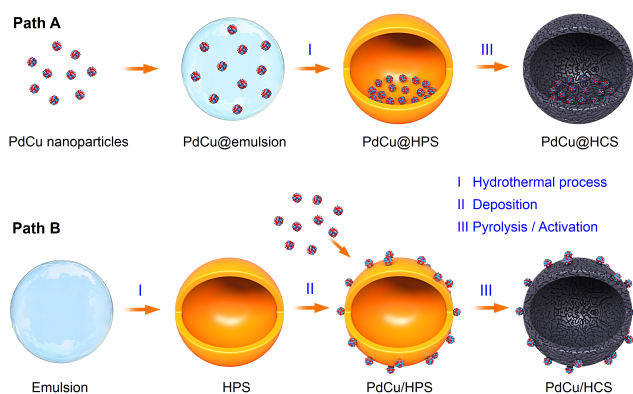


Figure 1. Schematic illustration of the synthesis of PdCu@HCS (path A) and PdCu/HCS (path B).

Herein, we report a general strategy to synthesize a pair of hollow nanoreactors with the pre-synthesized PdCu bimetallic nanoparticles encapsulated in the HCS (PdCu@HCS) and supported outside of the HCS (PdCu/HCS), respectively, while the other structural features are the same with each other. Based on these two comparative nanoreactors, it is quite possible to deeply study the void-confinement effects of the hollow nanoreactors in catalysis. The strategy for preparing the pair of nanoreactors is illustrated in Figure 1. Firstly, the PdCu nanoparticles with a diameter of 2.8 ± 0.2 nm (Figure S1a,b) are synthesized by a solvothermal method reported previously with a minor modification.^[6] Next, for the synthesis of PdCu@HCS (path A), the PdCu nanoparticles are introduced into the P123/oleic acid emulsion droplets, which are prepared by mixing a P123/sodium oleate solution containing the PdCu nanoparticles with an acidic solution of the polymer precursors containing 2,4-dihydroxybenzoic acid (DA) and hexamethylenetetramine (HMT). During the hydrothermal treatment, the polymerization of DA and formaldehyde (generated from HMT) takes place at the surface of the emulsion droplets to generate hollow polymer spheres (HPS, consistent with the result reported in literature^[7]), meanwhile the PdCu nanoparticles in the emulsion droplets are in-situ encapsulated in the HPS to obtain the sample of PdCu@HPS, which can be converted to PdCu@HCS after pyrolysis at 500 °C under Ar atmosphere. To ensure the comparability with PdCu@HCS, for the synthesis of PdCu/HCS (path B), the PdCu nanoparticles are deposited on the outside surfaces of the pre-synthesized HPS (without PdCu nanoparticles inside) to obtain PdCu/HPS, followed by then the PdCu/HCS is obtained after

pyrolysis under the same pyrolysis procedure. Since the carbon supported metal nanoparticles often get blocked by carbonaceous residues during pyrolysis,^[7a] before characterization and utilization, the samples of PdCu@HCS and PdCu/HCS are activated by H_2O_2 treatment (60 °C for 4 h), followed by reduction with H_2/Ar (10%/90%) at 300 °C for 6 h.

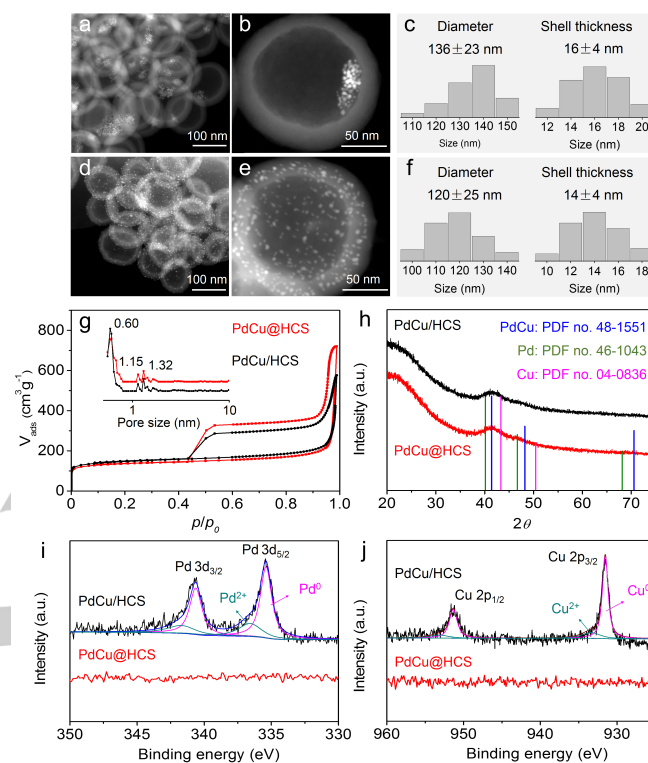


Figure 2. (a,b) STEM images, (c) the diameter and shell thickness distributions of PdCu@HCS; (d,e) STEM images, (f) the diameter and shell thickness distributions of PdCu/HCS; (g) N_2 sorption isotherms, (h) XRD patterns, (i) Pd 3d and (j) Cu 2p spectra of PdCu@HCS and PdCu/HCS.

High angle annular dark field scanning transmission electron microscopy (HAADF-STEM) images of PdCu@HCS clearly show that the PdCu nanoparticles (2.7 ± 0.6 nm, Figure S1c,d) are encapsulated in the hollow cores of HCS after pyrolysis and activation (Figure 2a,b), and no PdCu nanoparticles are observed on the outside surfaces of HCS (Figure S2a,b). The average diameter and shell thickness of PdCu@HCS are 136 ± 23 nm and 16 ± 4 nm, respectively (Figure 2c). In contrast, the PdCu nanoparticles (2.9 ± 0.5 nm, Figure S1e,f) of PdCu/HCS are uniformly dispersed on the outside surfaces of HCS (Figure 2d,e and S2c,d). Accordingly, the average diameter and shell thickness of PdCu/HCS are 120 ± 25 nm and 14 ± 4 nm, respectively (Figure 2f), which are very similar with the HCS structural parameters of PdCu@HCS. In addition, the N_2 sorption isotherms of PdCu@HCS and PdCu/HCS are almost overlapped with each other (Figure 2g), both of which exhibit a steep uptake at relative pressure $p/p_0 < 0.01$ (indicating the existence of micropores in the carbon shells) and a hysteresis loop at relative pressure closing around $p/p_0 \approx 0.42$ (characteristic of hollow structures).^[7] The pore size distributions of the two nanoreactors are also the same (Figure 2g, inset), which reveal similar peaks

COMMUNICATION

(mainly centered around 0.60 nm) in the micropore region. The Brunauer-Emmett-Teller (BET) surface areas and the total pore volumes are 509 m²·g⁻¹ and 1.11 cm³·g⁻¹ for PdCu@HCS, and 546 m²·g⁻¹ and 0.89 cm³·g⁻¹ for PdCu/HCS, respectively (Table S1). These results indicate that the two nanoreactors of PdCu@HCS and PdCu/HCS exhibit similar microporous carbon shells and hollow structures.

Moreover, the X-ray diffraction (XRD) patterns of those two nanoreactors show the same diffraction peaks which can be assigned to the PdCu alloy with face-centered cubic structure (PDF No. 48-1551), indicating the PdCu nanoparticles in both of the two nanoreactors have the same crystal structures (Figure 2h). According to inductively coupled plasma optical emission spectrometry (ICP-OES), the loadings of Pd and Cu are almost the same for PdCu@HCS (Pd: 3.0 wt%, Cu: 1.9 wt%, Table S1) and PdCu/HCS (Pd: 3.3 wt%, Cu: 1.8 wt%, Table S1), which are also in agreement with the thermogravimetric analysis (TGA, Figure S3). Furthermore, the distribution features of PdCu nanoparticles on the PdCu@HCS and PdCu/HCS are surveyed by X-ray photoelectron spectroscopy (XPS). As expected, no Pd 3d and Cu 2p signals are detected for PdCu@HCS (Figure 2i,j and S4), indicating that the PdCu nanoparticles are completely encapsulated by the HCS. In contrast, the peaks of Pd 3d and Cu 2p spectra are observed from the PdCu/HCS (Figure 2i,j and S4), where the Pd 3d spectrum is split into four peaks associated with Pd⁰ and Pd²⁺ chemical states,^[6a,8] and the Cu 2p spectrum shows the peaks that can be assigned to Cu⁰ and Cu²⁺ chemical states.^[2k] The chemical states of Pd²⁺ and Cu²⁺ may be caused by the formation of a passivated layer on the surface of PdCu nanoparticles under air atmosphere. Based on the above analysis, it is very clear to conclude that the nanoreactors of PdCu@HCS and PdCu/HCS have similar porous structures of HCS as well as similar crystal structures of PdCu nanoparticles, except the spatial location of PdCu nanoparticles, that the PdCu nanoparticles are encapsulated inside of the HCS for PdCu@HCS and supported outside of the HCS for PdCu/HCS, respectively. Therefore, the two hollow nanoreactors can be used as ideal models for comparatively investigating the void-confinement effects induced by the hollow structures.

In order to ensure that the catalytic tests over the two hollow nanoreactors are performed under the same reaction conditions, a simple two-chamber reaction system is developed to assist in the decoupling of the void-confinement effects from the influence of reaction conditions, where the two glass tubes are connected with H₂ balloon through a three-way tube with valves and placed in a magnetic stirrer water bath (Figure 3a and S5). In addition, the hydrogenation of styrene (0.42 × 0.72 nm, according to the structure from Chem3D, Table S2) to ethylbenzene is chosen as a model reaction to evaluate the catalytic behaviours of these two nanoreactors. As shown in Figure 3b and S6, the hydrogenation of styrene occurred over both the PdCu@HCS and PdCu/HCS. As expected, but also surprisingly, the hydrogenation rate over the PdCu@HCS (9.0 mmol g_{cat}⁻¹ h⁻¹, calculated based on the conversion reached 50% within a certain time) was obviously faster than that over the PdCu/HCS (5.8 mmol g_{cat}⁻¹ h⁻¹), which had been further confirmed after several repeated tests (Figure S7a-c). This result provides the experimental evidence that the porous carbon shell of PdCu@HCS can most likely induce an accumulation of styrene molecules and/or hydrogen in the void space,^[2f] leading to an enhanced reaction rate compared with the PdCu/HCS. It should be mentioned that the reaction curves over

PdCu@HCS (I-repeated) and PdCu/HCS (II-repeated) are very close to each other (Figure S7d), which may lead to a false conclusion that the catalytic behaviours of the two hollow nanoreactors are similar without obvious void-confinement effect for PdCu@HCS. This comparison indicates that it is difficult to address the void-confinement effects if testing the catalytic performances of the two nanoreactors separately even though the reaction conditions are attempted to be kept consistent, since very slight changes in reaction conditions (e.g., H₂ pressure, reaction temperature and stirring speed) can make differences in the catalytic performance. Therefore, it is very necessary to investigate the void-confinement effects of the hollow nanoreactors in the two-chamber reactor which is set into a magnetic stirrer water bath to ensure the same reaction conditions in the two chambers (when using the same catalyst in both chambers, the conversion curves are almost overlapped with each other, Figure S8).

Moreover, the recycling tests for styrene hydrogenation over the PdCu@HCS and PdCu/HCS were also carried out in the two-chamber reactor. The catalysts after each run were filtrated and washed with ethanol, followed by drying under vacuum at 50 °C for 8 h. In this way, the two nanoreactors were recycled three times without considerable change in their catalytic performances (Figure S9a-c). The TEM images, N₂ sorption isotherms and XRD patterns of the two nanoreactors indicate that their structures were basically unchanged (Figure S9d-g), confirming the high stabilities of the two hollow structured nanoreactors under the mild reaction conditions.

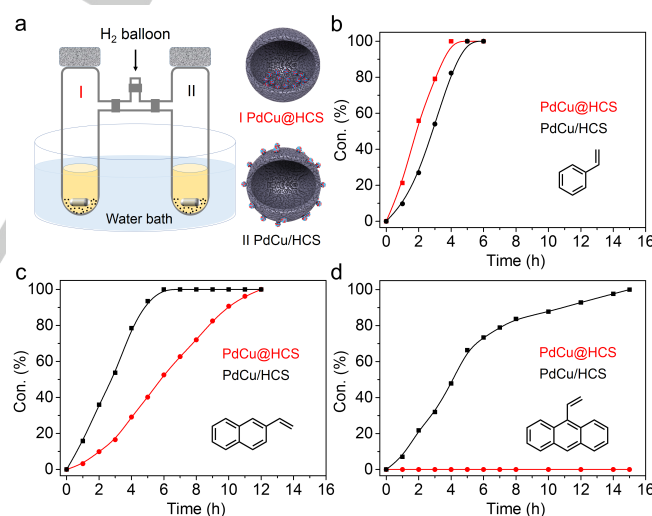


Figure 3. (a) Two-chamber reaction system; alkenes hydrogenation over PdCu@HCS and PdCu/HCS: (b) styrene, (c) 2-vinylnaphthalene, (d) 9-vinylnaphthalene. Reaction conditions: H₂ balloon, 25 °C, 30 mg of catalysts, 1 mmol of substrate, 0.5 mmol of dodecane as internal standard, 5 mL of ethanol as solvent. For 9-vinylnaphthalene, 0.2 mmol substrate was added.

As expected, the effect of mass transfer limitation induced by the HCS on the catalytic process will become gradually more serious with increasing the molecular size of the substrates. As shown in Figure 3c, the hydrogenation rate of 2-vinylnaphthalene (0.54 × 0.92 nm) over PdCu@HCS (2.8 mmol g_{cat}⁻¹ h⁻¹) was much slower than that over PdCu/HCS (6.0 mmol g_{cat}⁻¹ h⁻¹), namely that there was no acceleration in 2-vinylnaphthalene hydrogenation

COMMUNICATION

over PdCu@HCS, which can be attributed to the mass transfer limitation for the molecule of 2-vinylnaphthalene by the microporous carbon shell of PdCu@HCS. For the hydrogenation of 9-vinylnaphthalene (0.73×0.91 nm), the conversion over PdCu/HCS was 100% within 15 h; in contrast, almost no conversion proceeded ($< 3\%$) over PdCu@HCS after 15 h (Figure 3d), indicating that the nanoreactor of PdCu@HCS restricts the transport of 9-vinylnaphthalene through the microporous carbon shells, and then inhibits its hydrogenation.

Based on the above comparative analysis, the nanoreactor of PdCu@HCS with microporous carbon shells (pore size is mainly centred around 0.60 nm, according to N_2 sorption analysis) can accelerate the hydrogenation of styrene (0.42×0.72 nm) via an accumulation of reactant molecules in the void space, decelerate the hydrogenation of 2-vinylnaphthalene (0.54×0.92 nm) due to the mass transfer limitation and inhibit the hydrogenation of 9-vinylnaphthalene (0.73×0.91 nm) because of the molecular-sieving effect, respectively (the hydrogenation processes over the hollow nanoreactors have been modelled by referring to literature,^[9] Figure S10). These studies provide straightforward examples for understanding and estimating the void-confinement effects of hollow nanoreactors (e.g., accumulation of reactant molecules, mass transfer limitation, molecular-sieving effect) which are highly related with both the pore size of the shells and the molecular size of the substrates. Notably, increasing the reaction temperature to 60 °C, the reaction curves for styrene hydrogenation over PdCu@HCS and PdCu/HCS were almost overlapped with each other (Figure S11), indicating that the void-confinement effects of PdCu@HCS for accelerating hydrogenation of small molecules (such as styrene) are temperature dependent.

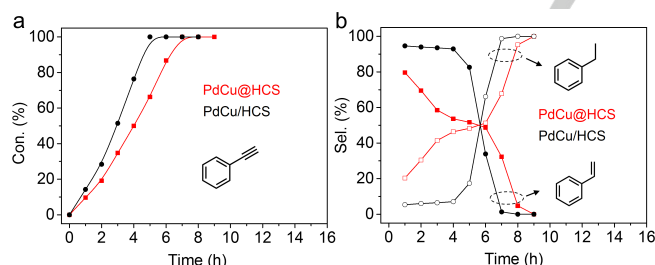


Figure 4. Conversion (a) and selectivity (b) for hydrogenation of phenylacetylene over PdCu@HCS and PdCu/HCS. Reaction condition: H_2 balloon, 25 °C, 30 mg of catalysts, 1 mmol of substrate, 0.5 mmol of dodecane as internal standard, 5 mL of ethanol as solvent.

Next, the hydrogenation of phenylacetylene (0.42×0.74 nm) over the two nanoreactors was also investigated in the two-chamber reactor. As shown in Figure 4a, the conversion of phenylacetylene over PdCu/HCS reached 100% after reaction for 5 h with selectivity towards styrene higher than 82% (Figure 4b); after the complete consumption of phenylacetylene, the styrene was quickly converted into ethylbenzene (Figure 4b). However, over PdCu@HCS full conversion of phenylacetylene was reached after reaction for 7 h with the styrene selectivity of only 32 % (Figure 4a,b). These results indicate that the conversion of styrene over PdCu@HCS is enhanced compared with that over PdCu/HCS (Figure S12). Since the structures of PdCu nanoparticles in both PdCu@HCS and PdCu/HCS are similar, the difference of catalytic performance in the two nanoreactors should

be assigned to the void-confinement effects of PdCu@HCS, which can result in relatively high local concentration and long retention time of the in-situ generated intermediate of styrene in the void space, and therefore promote the hydrogenation of styrene. Accordingly, the slower hydrogenation rate of phenylacetylene over PdCu@HCS ($4.2 \text{ mmol g}_{\text{cat}}^{-1} \text{ h}^{-1}$) compared with PdCu/HCS ($5.6 \text{ mmol g}_{\text{cat}}^{-1} \text{ h}^{-1}$) can be ascribed to the competitive hydrogenation of phenylacetylene and styrene in the void space. Similar catalytic performances were found for the hydrogenation of 1-ethynynaphthalene (0.66×0.74 nm) and 2-Octyn-1-ol over the two nanoreactors (Figure S13a,b and S14a,b). These results confirm that the void space of the hollow nanoreactors, which provides a unique microenvironment for reactions, can alter the hydrodynamics of reactants or intermediates, and correspondingly change the catalytic properties during reactions. In addition, the molecular-sieving effect of PdCu@HCS was again demonstrated by hydrogenation of 9-ethynylphenanthrene (0.78×0.90 nm), where almost no conversion proceeded (Figure S13c,d). Moreover, the reaction curves for hydrogenations of 2-Octyn-1-ol and phenylacetylene also tended to be the same when increasing the reaction temperature to 60 °C (Figure S14c,d and S15), further indicating that the void-confinement effects of PdCu@HCS are temperature dependent for hydrogenation of small molecules.

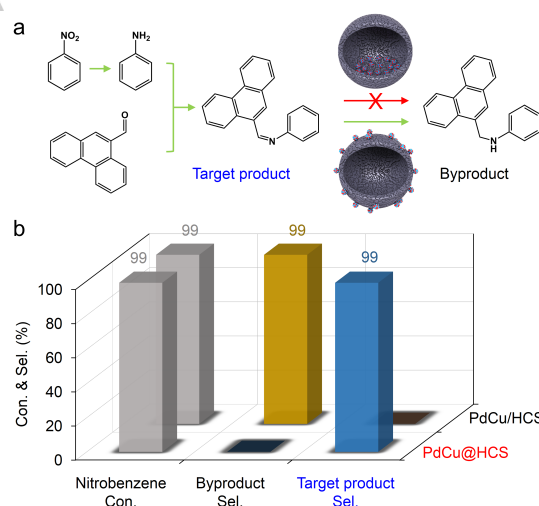


Figure 5. (a) Scheme of cascade reductive coupling of nitroarene with carbonyl compound; (b) conversion and selectivity diagrams of the cascade reaction over PdCu@HCS and PdCu/HCS.

Based on the catalytic properties of the hollow nanoreactor of PdCu@HCS, efficient synthesis of important organic compounds can be achieved. Imines are an important class of chemicals that can be used as intermediates in various reactions (e.g., condensation, cycloaddition and reduction reactions) for the generation of pharmaceuticals, agricultural chemicals and other useful fine chemicals.^[10] An attractive way to synthesize imines is via cascade reductive coupling of nitro compounds with carbonyl compounds. In this process, however, preventing the over-hydrogenation of imines to amines remains an issue. Here, nitrobenzene (0.43×0.59 nm) and phenanthrene-9-carboxaldehyde (0.68×0.90 nm) are chosen as precursors for synthesizing the target imine, N-(9-

COMMUNICATION

phenanthrenylmethylene)benzenamine, using PdCu@HCS as the catalyst (Figure 5a). In the first step, the nitrobenzene can quickly diffuse into the void space of PdCu@HCS (as inferred from hydrogenation of styrene and phenylacetylene, Figure 3b, 4a), and convert into aniline through a reductive process. The formed aniline will then condense with the phenanthrene-9-carboxaldehyde outside of the hollow nanoreactor to generate the target imine (experiment indicates that the condensation reaction can proceed without catalysts). In fact, the molecular size of phenanthrene-9-carboxaldehyde is similar to the molecules of 9-vinylanthracene and 9-ethynylphenanthrene, which cannot diffuse through the carbon shells of PdCu@HCS. Therefore, it can be expected that the over-reduction of the target imine to amine can be avoided through the molecular-sieving effect. As shown in Figure 5b, the conversion of nitrobenzene over the PdCu@HCS reached 100% after reaction for 3 h, and imine selectivity was indeed higher than 99% (Figure S16). In contrast, the imine was completely converted into amine when using PdCu/HCS as the catalyst (Figure S17). These results indicate that the specific imines as well as other organic compounds can be efficiently and selectively produced by utilizing the unique features of the hollow nanoreactors.

In conclusion, we have developed a general strategy to synthesize a pair of hollow nanoreactors (PdCu@HCS and PdCu/HCS). Based on the two comparative nanoreactors, the void-confinement effects of hollow nanoreactors in liquid-phase hydrogenation have been extensively investigated in the two-chamber reactor. It has found that the PdCu@HCS can accelerate the hydrogenation of styrene via an accumulation of reactant molecules, decelerate the hydrogenation of 2-vinylnaphthalene due to the mass transfer limitation and inhibit the hydrogenation of 9-vinylanthracene because of the molecular-sieving effect, respectively. In addition, the void space of the PdCu@HCS can alter the hydrodynamics of the intermediate, and correspondingly change the catalytic selectivity during hydrogenation of small alkynes. Moreover, a specific imine has been selectively produced over the PdCu@HCS by utilizing the shape-selective catalysis principle. These studies provide straightforward examples for clearly understanding and estimating the void-confinement effects of the hollow nanoreactors. It is expected that the synthesis strategy can be extended to other metal systems, and meanwhile the HCS structures (diameters, shell thicknesses and porous structures) as well as the loading amount of metal nanoparticles can be tailored by fine-tune synthetic parameters. Therefore, various pairs of hollow nanoreactors can be designed and employed as ideal models for study of catalytic mechanisms in various reactions, and then guiding the design of efficient catalysts for specific chemical transformations and the development of nanoreactor reaction engineering.

Acknowledgements

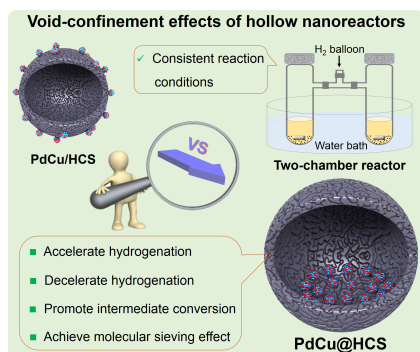
This work was supported by the National Natural Science Foundation of China (21872159), QIBEBT (QIBEBT ZZBS201802) and the DNL Cooperation Fund, CAS (DNL180402). The authors would like to thank Cameron Price for proof reading. The authors are grateful to Prof. Can Li and Prof. Qihua Yang for fruitful discussions.

Keywords: heterogeneous catalysis • hollow nanoreactors • void-confinement effects • shape-selective catalysis • hydrogenation

- [1] a) H. Z. Yang, X. Wang, *Adv. Mater.* **2019**, *31*, 1800743; b) F. Schüth, *Chem. Mater.* **2014**, *26*, 423-434; c) Z. G. Teng, W. Li, Y. X. Tang, A. Elzatahry, G. M. Lu, D. Y. Zhao, *Adv. Mater.* **2019**, *31*, 1707612; d) L. S. Lin, J. Song, H. H. Yang, X. Chen, *Adv. Mater.* **2018**, *30*, 1704639; e) X. J. Wang, J. Feng, Y. C. Bai, Q. Zhang, Y. D. Yin, *Chem. Rev.* **2016**, *116*, 10983-11060; f) Y. S. Li, J. L. Shi, *Adv. Mater.* **2014**, *26*, 3176-3205; g) H. Tian, J. Liang, J. Liu, *Adv. Mater.* **2019**, *31*, 1903886; h) T. N. Gao, T. Wang, W. Wu, Y. L. Liu, Q. S. Huo, Z. A. Qiao, S. Dai, *Adv. Mater.* **2019**, *31*, 1806254; i) R. Bi, N. Xu, H. Ren, N. Yang, Y. Sun, A. Cao, R. Yu, D. Wang, *Angew. Chem. Int. Ed.* **2020**, *59*, 4865-4868.
- [2] a) B. W. Li, H. C. Zeng, *Adv. Mater.* **2019**, *31*, 1801104; b) W. Zhu, Z. Chen, Y. Pan, R. Dai, Y. Wu, Z. Zhuang, D. Wang, Q. Peng, C. Chen, Y. Li, *Adv. Mater.* **2018**, *31*, 1800426; c) Z. A. Qiao, P. F. Zhang, S. H. Chai, M. F. Chi, G. M. Veith, N. C. Gallego, M. Kidder, S. Dai, *J. Am. Chem. Soc.* **2014**, *136*, 11260-11263; d) H. B. Zou, J. Y. Dai, R. W. Wang, *Chem. Commun.* **2019**, *55*, 5898-5901; e) W. Liu, J. Huang, Q. Yang, S. Wang, X. Sun, W. Zhang, J. Liu, F. Huo, *Angew. Chem. Int. Ed.* **2017**, *56*, 5512-5516; f) D. Yao, Y. Wang, Y. Li, Y. Zhao, J. Lv, X. Ma, *ACS Catal.* **2018**, *8*, 1218-1226; g) J. Yang, F. Zhang, H. Lu, X. Hong, H. Jiang, Y. Wu, Y. Li, *Angew. Chem. Int. Ed.* **2015**, *54*, 10889-10893; h) Y. Kuwahara, H. Kango, H. Yamashita, *ACS Catal.* **2019**, *12*, 1993-2006; i) N. Wang, G. Cheng, L. P. Guo, B. E. Tan, S. B. Jin, *Adv. Funct. Mater.* **2019**, *29*, 1904781; j) S. S. Ma, P. P. Su, W. J. Huang, S. Jiang, S. Y. Bai, J. Liu, *ChemCatChem* **2019**, *11*, 6092-6098; k) J. Sheng, J. Kang, H. Ye, J. Xie, B. Zhao, X. -Z. Fu, Y. Yu, R. Sun, C. -P. Wong, *J. Mater. Chem. A* **2018**, *6*, 3906-3912; l) H. R. Chen, K. Shen, Q. Mao, J. Y. Chen, Y. W. Li, *ACS Catal.* **2018**, *8*, 1417-1426; m) K. Li, J. Wei, H. Yu, P. Xu, J. Wang, H. Yin, M. A. Cohen Stuart, J. Wang, S. Zhou, *Angew. Chem. Int. Ed.* **2018**, *57*, 16458-16463; n) C. Galeano, J. C. Meier, M. Soorholtz, H. Bongard, C. Baldizzone, K. J. J. Mayrhofer, F. Schüth, *ACS Catal.* **2014**, *4*, 3856-3868; o) D. Yao, Y. Wang, K. Hassan-Legault, A. Li, Y. Zhao, J. Lv, S. Huang, X. Ma, *ACS Catal.* **2019**, *9*, 2969-2976; p) R. P. Ye, X. Y. Wang, C. A. H. Price, X. Y. Liu, Q. H. Yang, M. Jaroniec, J. Liu, *Small* **2020**, *16*, 1906250; q) Q. Yang, C. C. Yang, C. H. Lin, H. L. Jiang, *Angew. Chem. Int. Ed.* **2019**, *58*, 3511-3515; r) Q. Xia, Z. Lin, W. Lai, Y. Wang, C. Ma, Z. Yan, Q. Gu, W. Wei, J. Z. Wang, Z. Zhang, H. K. Liu, S. X. Dou, S. L. Chou, *Angew. Chem. Int. Ed.* **2019**, *58*, 14125-14128.
- [3] J. Lee, S. M. Kim, I. S. Lee, *Nano Today* **2014**, *9*, 631-667.
- [4] H. Tian, X. Liu, L. Dong, X. Ren, H. Liu, C. A. H. Price, Y. Li, G. Wang, Q. Yang, J. Liu, *Adv. Sci.* **2019**, *6*, 1900807.
- [5] G. Prieto, H. Tuysuz, N. Duyckaerts, J. Knossalla, G.-H. Wang, F. Schüth, *Chem. Rev.* **2016**, *116*, 14056-14119.
- [6] a) K. Jiang, P. Wang, S. Guo, X. Zhang, X. Shen, G. Lu, D. Su, X. Huang, *Angew. Chem. Int. Ed.* **2016**, *55*, 9030-9035; b) K. H. Park, Y. W. Lee, S. W. Kang, S. W. Han, *Chem. Asian J.* **2011**, *6*, 1515-1519.
- [7] a) G.-H. Wang, K. Chen, J. Engelhardt, H. Tüysüz, H. -J. Bongard, W. Schmidt, F. Schüth, *Chem. Mater.* **2018**, *30*, 2483-2487; b) G.-H. Wang, J. Hilgert, F. H. Richter, F. Wang, H. -J. Bongard, B. Spliethoff, C. Weidenthaler, F. Schüth, *Nat. Mater.* **2014**, *13*, 294-301.
- [8] Z. W. Guo, X. W. Kang, X. S. Zheng, J. Huang, S. W. Chen, *J. Catal.* **2019**, *374*, 101-109.
- [9] a) R. Roa, W. K. Kim, M. Kanduč, J. Dzubiella, S. Angioletti-Uberti, *ACS Catal.* **2017**, *7*, 5604-5611; b) S. Angioletti-Uberti, Y. Lu, M. Ballauff, J. Dzubiella, *J. Phys. Chem. C* **2015**, *119*, 15723-15730; c) S. Wu, J. Dzubiella, J. Kaiser, M. Drechsler, X. Guo, M. Ballauff, Yan Lu, *Angew. Chem. Int. Ed.* **2012**, *51*, 2229-2233.
- [10] a) Y. Shiraishi, M. Ikeda, D. Tsukamoto, S. Tanaka, T. Hirai, *Chem. Commun.* **2011**, *47*, 4811-4813; b) Z. Li, R. Yu, J. Huang, Y. Shi, D. Zhang, X. Zhong, D. Wang, Y. Wu, Y. Li, *Nat. Commun.* **2015**, *6*, 8248; c) S. Zahir, H. Zhu, *Molecules* **2015**, *20*, 1941-1954.

SUPPORTING INFORMATION

Entry for the Table of Contents



A pair of hollow carbon sphere (HCS) nanoreactors with the PdCu nanoparticles encapsulated inside of HCS (PdCu@HCS) and supported outside of HCS (PdCu/HCS) have been prepared. Based on the two comparative nanoreactors, the void-confinement effects of hollow nanoreactors in liquid-phase hydrogenation have been extensively investigated in the two-chamber reactor.