

Structure-Based Optimization of a Novel Class of Aldehyde Dehydrogenase 1A (ALDH1A) Subfamily-Selective Inhibitors as Potential Adjuncts to Ovarian Cancer Chemotherapy

Brandt C Huddle, Edward Grimley, Cameron D Buchman, Mikhail Chtcherbinine, Bikash Debnath, Pooja Mehta, Kun Yang, Cynthia A Morgan, Siwei Li, Jeremy Antonio Felton, Duxin Sun, Geeta Metha, Nouri Neamati, Ronald J Buckanovich, Thomas D Hurley, and Scott D Larsen

J. Med. Chem., **Just Accepted Manuscript** • DOI: 10.1021/acs.jmedchem.8b00930 • Publication Date (Web): 17 Sep 2018

Downloaded from <http://pubs.acs.org> on September 17, 2018

Just Accepted

"Just Accepted" manuscripts have been peer-reviewed and accepted for publication. They are posted online prior to technical editing, formatting for publication and author proofing. The American Chemical Society provides "Just Accepted" as a service to the research community to expedite the dissemination of scientific material as soon as possible after acceptance. "Just Accepted" manuscripts appear in full in PDF format accompanied by an HTML abstract. "Just Accepted" manuscripts have been fully peer reviewed, but should not be considered the official version of record. They are citable by the Digital Object Identifier (DOI®). "Just Accepted" is an optional service offered to authors. Therefore, the "Just Accepted" Web site may not include all articles that will be published in the journal. After a manuscript is technically edited and formatted, it will be removed from the "Just Accepted" Web site and published as an ASAP article. Note that technical editing may introduce minor changes to the manuscript text and/or graphics which could affect content, and all legal disclaimers and ethical guidelines that apply to the journal pertain. ACS cannot be held responsible for errors or consequences arising from the use of information contained in these "Just Accepted" manuscripts.



Structure-Based Optimization of a Novel Class of Aldehyde Dehydrogenase 1A (ALDH1A) Subfamily-Selective Inhibitors as Potential Adjuncts to Ovarian Cancer Chemotherapy

Brandt C. Huddle,^{†&} Edward Grimley,^{†&} Cameron D. Buchman,[‡] Mikhail Chtcherbinine,[‡] Bikash Debnath,[†] Pooja Mehta,[§] Kun Yang,⁺ Cynthia A. Morgan,[‡] Siwei Li,[#] Jeremy Felton,[#] Duxin Sun,[#] Geeta Mehta,^{§, ^, %} Nouri Neamati,[†] Ronald J. Buckanovich,^{, +, †} Thomas D. Hurley,[‡] and Scott D. Larsen^{*, †, ¶}*

[¶]Vahlteich Medicinal Chemistry Core and [†]Department of Medicinal Chemistry, College of Pharmacy;
University of Michigan, Ann Arbor, Michigan 48109

[‡]Department of Biochemistry and Molecular Biology; Indiana University School of Medicine, Indianapolis,
Indiana 46202

⁺Division of Hematology Oncology, Department of Internal Medicine, University of Michigan, Ann Arbor,
Michigan 48109

[‡]Division of Hematology-Oncology, Department of Internal Medicine, [†]Department of Obstetrics, Gynecology,
and Reproductive Sciences, University of Pittsburgh Medical Center and the Magee Womens Research
Institute, Pittsburgh PA 15213

[§]Department of Materials Science Engineering, University of Michigan, Ann Arbor, Michigan 48109

[^]Department of Biomedical Engineering, University of Michigan, Ann Arbor, Michigan 48109

[%]Macromolecular Science and Engineering, University of Michigan, Ann Arbor, Michigan 48109

[#]Department of Pharmaceutical Sciences, College of Pharmacy; University of Michigan, Ann Arbor,
Michigan 48109

[&]Indicates equal contribution

Abstract: Aldehyde dehydrogenase (ALDH) activity is commonly used as a marker to identify cancer stem-like cells. The three ALDH1A isoforms have all been individually implicated in cancer stem-like cells and in chemoresistance; however, which isoform is preferentially expressed varies between cell lines. We sought to explore the structural determinants of ALDH1A isoform selectivity in a series of small molecule inhibitors in support of research into the role of ALDH1A in cancer stem cells. An SAR campaign guided by a co-crystal structure of the HTS hit **CM39** (**7**) with ALDH1A1 afforded first-in-class inhibitors of the ALDH1A subfamily with excellent selectivity over the homologous ALDH2 isoform. We also discovered the first reported modestly selective single isoform 1A2 and 1A3 inhibitors. Two compounds, **13g** and **13h**, depleted the CD133⁺ putative cancer stem cell pool, synergized with cisplatin, and achieved efficacious concentrations in vivo following IP administration. **13h** additionally synergized with cisplatin in a patient derived ovarian cancer spheroid model.

INTRODUCTION

Currently, more than half of the 21,400 U.S. women diagnosed with epithelial ovarian cancer (EOC) annually are expected to succumb to the disease within 5 years.¹ The first line therapy for the majority of EOC cases is surgical debulking of the primary tumor with adjuvant platinum- and taxane-based chemotherapeutics to treat the residual disease.²⁻³ Approximately 70% of EOC patients are initially responsive to chemotherapeutics; however, most relapse and ultimately become unresponsive to further chemotherapy.⁴

EOC tumors contain a hierarchy of heterogeneous cells consistent with the Cancer Stem Cell (CSC) hypothesis.⁵⁻⁸ New therapies which target these CSCs may improve patient outcomes alone or when combined with chemotherapy.⁹ In EOC, elevated aldehyde dehydrogenase (ALDH) activity is a marker of CSCs.^{5-7, 10-12} ALDH^{bright} cells (the sub-population of cells with the greatest activity in the ALDEFLUOR assay) are more tumorigenic and chemoresistant than ALDH^{dim} cells, are more prevalent in chemoresistant tumors following chemotherapy, and their presence within a tumor is predictive of poorer patient outcomes.^{6-8, 12}

There are 19 distinct genes for ALDH super-family members in humans. The primary function of ALDH is to oxidize endogenous aldehydes generated through various cellular processes to the corresponding carboxylic acids. In addition to neutralization of these reactive species, the 3 members of the ALDH1A subfamily also function in cellular signaling by generating the nuclear hormone all-trans retinoic acid (ATRA) from retinal.¹³ In some solid tumors, ATRA has been shown to activate transcription of oncogenes such as c-MYC, PDK-1, and cyclin D1.¹⁴ Although the strongest body of evidence supports the role of ALDH1A1 (1A1) in CSCs, other isoforms of the ALDH1A family are often simultaneously expressed.¹⁵

Given that ALDH plays a potentially critical role in CSCs, inhibition of ALDH is a potential strategy to target CSC and reverse resistance to chemotherapy. Indeed, knockdown or inhibition of 1A1 increases chemosensitivity in ovarian and other cancers.^{5, 16-21} ALDH1A2 (1A2) and ALDH1A3 (1A3) have similarly been implicated in chemoresistance in other tumor types.²²⁻²³ Some ALDH isoforms, including 1A1, are able to divert cyclophosphamide metabolism, preventing generation of the active phosphoramidate mustard; however,

their ability to attenuate the effects of other chemotherapeutics such as cisplatin and paclitaxel is poorly understood.¹⁵

A panel of cell-permeable, single or dual isoform-selective inhibitors for 1A1, 1A2, and 1A3 could have utility as probes for dissecting the role of the various isoforms in any number of applications which currently rely on siRNA knockdown. Various tumors and cancer cell lines differ in which ALDH1A isoforms are highly expressed. *Importantly, high grade serous ovarian tumors, the histologic subtype responsible for 70-80% of EOC deaths, show strong elevation of 1A3 expression but only modest elevation in 1A1 expression.* Other histologic subtypes show significant elevation of both isoforms.²⁴⁻²⁵ The inability of existing 1A1 selective inhibitors to inhibit ALDEFLUOR in 1A3 high cell lines has previously been demonstrated.²⁶

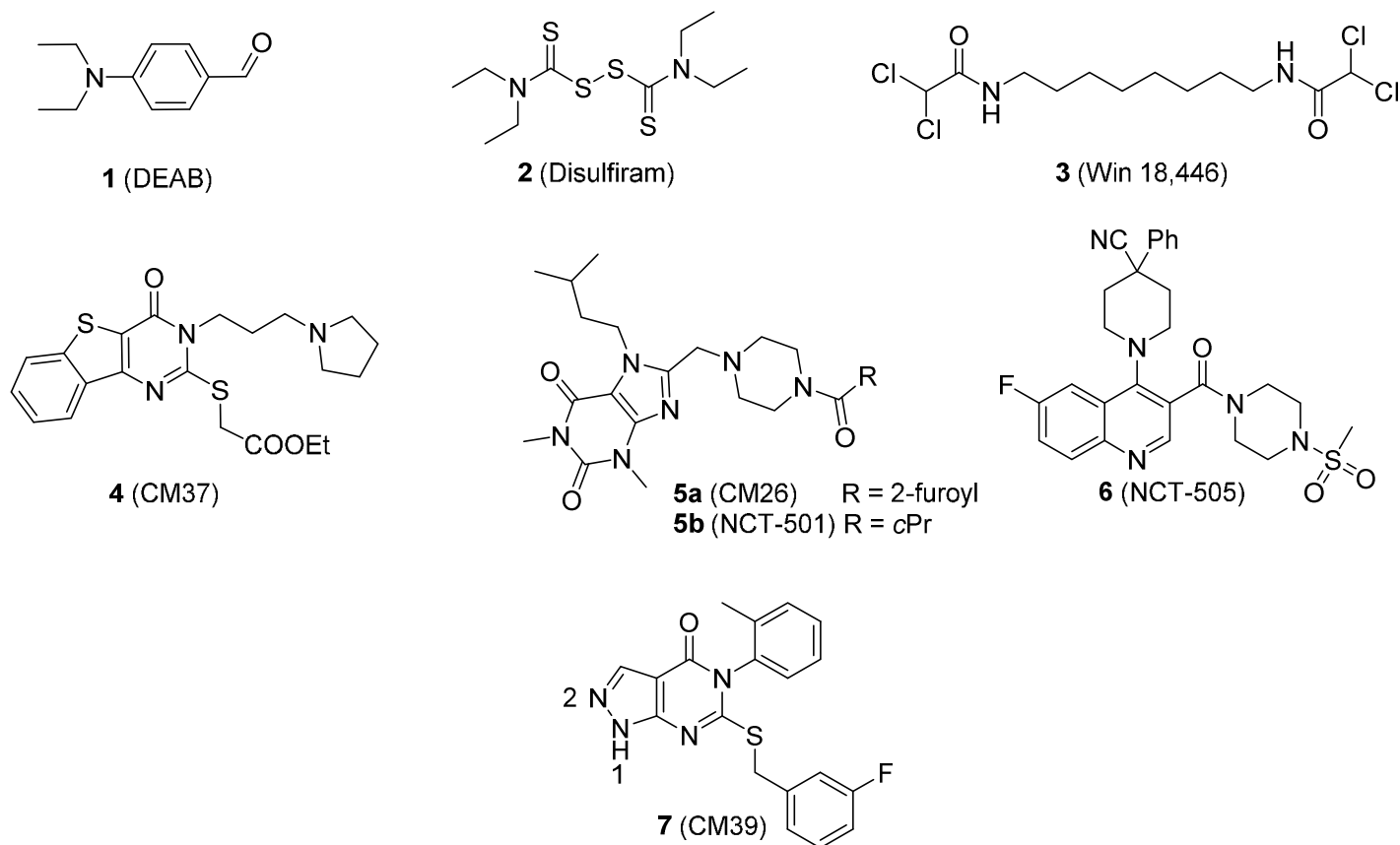


Figure 1. Representative ALDH inhibitors 1 - 6 and lead compound 7 (CM39)

There are a number of small molecule ALDH inhibitors reported in the literature (Figure 1).^{13, 15} Many bear an electrophilic warhead and rely on reversible or irreversible covalent interaction with the ALDH catalytic cysteine to achieve potency. Design of highly isoform selective compounds employing these warheads is complicated by the presence of this critical cysteine throughout the ALDH family. One of most widely studied ALDH inhibitors, DEAB (**1**), inhibits at least 6 isoforms of ALDH with an $IC_{50} < 15 \mu M$ and is a substrate of at least 5 isoforms, including 1A1.²⁷ Compound **1** requires concentrations of $\sim 100 \mu M$ to induce chemosensitization of CSCs.²⁸ Disulfiram (**2**), a non-selective covalent ALDH inhibitor approved for treatment of alcoholism, is rapidly metabolized into several covalent ALDH inhibitors with variable isoform selectivity.¹³ While **2** is also reported to deplete CSCs in combination with chemotherapy, this effect likely does not result from its action on ALDH.²⁹⁻³¹ Win 18,446 (**3**) is a potent inhibitor of the ALDH1A subfamily (1A1, 1A2, 1A3 $K_i = 285, 56,$ and 261 nM respectively).³² Unfortunately, **3** also inhibits ALDH2 and is a known teratogen due to its ability to chelate zinc, making it an imperfect tool for the study of ALDH1A biology.³³ Hurley and colleagues disclosed the non-covalent 1A1 inhibitor high throughput screening (HTS) hits **4** and **5a** along with co-crystal structures.³⁴⁻³⁵ Soon thereafter, compound **5b** was disclosed elsewhere.³⁶ Recently, a scaffold-hopping approach to improve the cell permeability of **5b** yielded compound **6** and other similar analogs. Compound **6** exhibits potent and highly selective 1A1 inhibition ($1A1 \text{ } IC_{50} = 7 \text{ nM}$; 1A2, 1A3, ALDH2, ALDH3A1 $IC_{50}s > 1 \mu M$) and potent inhibition of ALDEFLUOR in MIA PaCa-2 cells, which preferentially express 1A1. Furthermore, this series was able to sensitize a paclitaxel resistant ovarian cancer cell line to treatment with paclitaxel.³⁷ To our knowledge there are no selective inhibitors of 1A2 or 1A3.^{13, 15}

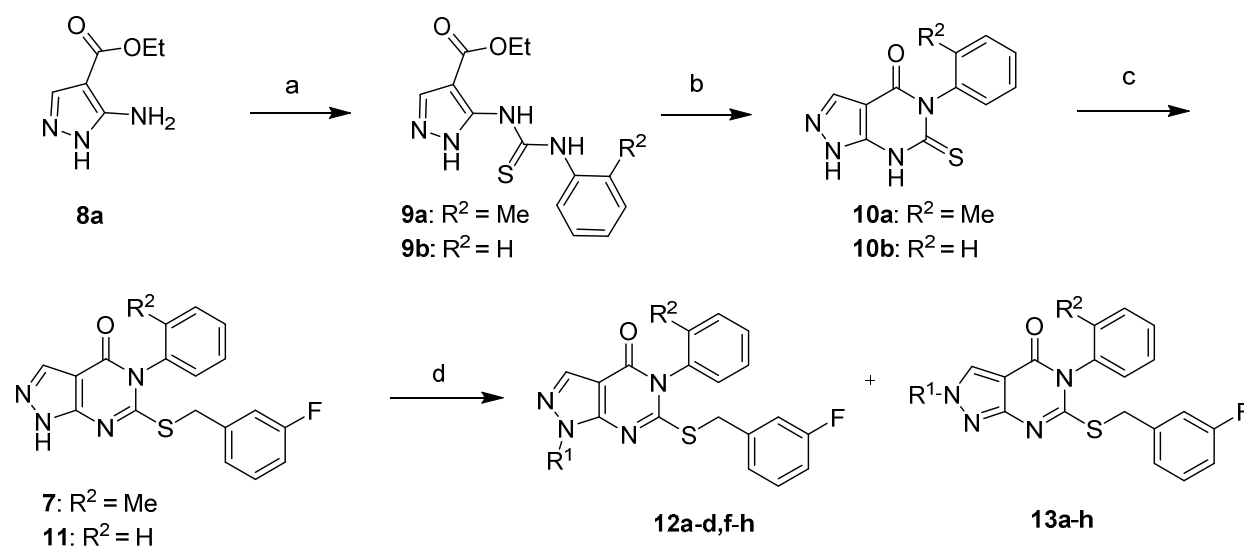
The high throughput screen which identified **4** and **5a** also yielded the pyrazolopyrimidinone **CM39** (**7**). This compound was an attractive lead for the development of ALDH1A subfamily inhibitors because it exhibited reasonably ligand-efficient inhibition of 1A1 ($IC_{50} = 0.9 \mu M$, $LE = 0.32$) and good selectivity ($< 20\%$ inhibition of ALDH2 and 3A1 at $20 \mu M$).³⁴ A further screen of selectivity showed $\sim 50\%$ inhibition of 1A2 and 1A3 at $20 \mu M$ and little activity against other ALDH isoforms (vide infra). Following our successful acquisition of an x-ray crystal structure of **7** bound in the 1A1 active site (vide infra), we undertook the rational design and

synthesis of analogs. Herein we report the ability of these analogs to inhibit ALDH1A with widely varying selectivity profiles. We also examine the ability of selected compounds to inhibit cellular ALDH function using ALDEFLUOR, to deplete the CD133⁺ putative cancer stem cell pool, and to synergize with cisplatin in two ovarian cancer cell lines and in patient derived ovarian cancer spheroids. Aqueous solubility and metabolic stability were assessed for select compounds to guide future optimization of in vivo probes.

RESULTS and DISCUSSION

Chemistry: As shown in Scheme 1, synthesis of compounds **7**, **11**, **12a-d,f,h**, and **13a-h** began with the commercially available pyrazole **8a**.³⁸ Treatment of **8a** with the appropriate aryl isothiocyanate in refluxing toluene afforded the thioureas **9a** and **9b** which precipitated from the reaction mixture upon cooling. Ring closure to generate thiopyrimidinones **10a** and **10b** proceeded in aqueous NaOH at reflux. Selective S-alkylation with 3-fluorobenzyl bromide yielded compounds **7** and **11**. Subsequent N-alkylation resulted in a mixture of regioisomers **12a-d,f,h** and **13a-h** which were easily separated by flash chromatography on silica. Regioisomeric assignment was made by NOE; in all cases the 1-alkyl-pyrazoles **12** eluted before the corresponding 2-alkyl-pyrazoles **13**.

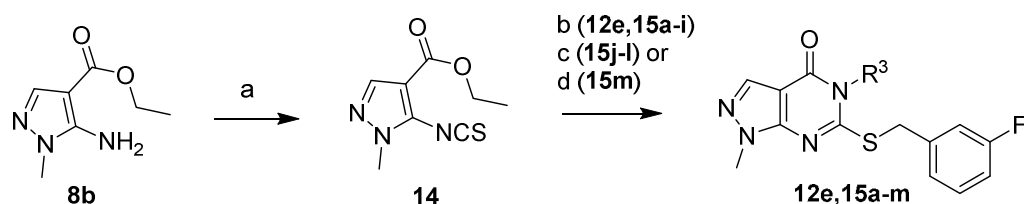
Scheme 1. Synthesis of compounds **7**, **11**, **12a-d,f,h**, and **13a-h**.^a



^aReagents and conditions: (a) ArNCS, toluene, reflux; (b) 1N NaOH, reflux; (c) 3-F-PhCH₂Br, K₂CO₃, DMF, RT; (d) R¹-X, K₂CO₃, DMF, 50°C X = Br, OMs

In a departure from our earlier synthetic strategy, we envisioned an alternative route to **12e** and **15a-m** that would use readily available amines rather than the corresponding isothiocyanates to introduce diverse R^3 substituents as shown in Scheme 2. The synthesis of **14** has been previously accomplished by treating commercially available pyrazole **8b** with thiophosgene under Schotten-Baumann conditions; however, we found the low yield, difficult purification, and use of noxious reagents to be unsatisfactory.³⁹ After screening many reported isothiocyanate-forming conditions employing carbon disulfide as the thiocarbonyl source, we found that treatment of **8b** with NaH and CS₂ followed by the slow addition of I₂ afforded **14** in good yield following a simple purification.⁴⁰ Isothiocyanate **14** reacted with amines rapidly under mild conditions to form thioureas. Subsequent addition of NaH in the same pot facilitated cyclization to the thiopyrimidinone. For the majority of arylamines, adding 3-fluorobenzyl bromide at this point completed the transformation of **14** to **12e**, **15a-i** in one pot. For alkylamines and 2-aminopyridine (**15j-l**), an aqueous workup prior to S-alkylation with 3-fluorobenzyl bromide reduced the formation of several unidentified side products. The thiourea resulting from treatment of **14** with 8N ethanolic methylamine spontaneously cyclized to form the thiopyrimidinone. Following removal of volatiles, S-alkylation of this intermediate with 3-fluorobenzyl bromide under basic conditions afforded **15m**.

Scheme 2. Synthesis of analogs **12e**, **15a-m**.^a



^aReagents and conditions: (a) NaH, CS₂, I₂, THF, 0-40°C; (b) R^3 -NH₂, 3-F-PhCH₂Br, NaH, DMF, 0-20°C; (c) (i) R^3 -NH₂, NaH, DMF, 0-20°C; (ii) 3-F-PhCH₂Br, K₂CO₃, DMF, RT; (d) (i) MeNH₂, EtOH; (ii) 3-F-PhCH₂Br, K₂CO₃, DMF, RT

Characterization of lead 7: To establish a benchmark and guide design of new analogs, we further characterized compound **7**. As shown in Figure 2A, **7** has excellent selectivity for 1A1 vs. 2, 1B1, 3A1, 4A1,

5A1, and 1L1 yet modestly inhibits 1A2, 1A3. Despite the presence of a potentially electrophilic isothiourea, **7**-mediated inhibition of 1A1 was fully reversed following gel filtration, indicating it is non-covalent (Supplemental Figure S1). Similar to other non-covalent inhibitors of 1A1, **7** was found to be non-competitive with respect to the substrate acetaldehyde with a $K_i = 0.38 \pm 0.05 \mu\text{M}$ and uncompetitive with respect to NAD^+ .³⁵ Liabilities of the lead with regard to its potential as a therapeutic included a half-life of 9 minutes in the presence of MLMs and poor aqueous solubility ($2 \mu\text{M}$), both of which could be attributed to high lipophilicity (cLogP of 5.2).⁴¹ As shown in Figure 2B, compound **7** was inferior to the widely-used ALDEFLUOR control compound DEAB (**1**) at reducing ALDH^{Bright} PEO1 cells at concentrations up to $30 \mu\text{M}$. This result suggested that ALDH1A1 selective inhibition is not sufficient to inhibit ALDEFLUOR in this 1A3 high cell line. It is important to note that while DEAB is a 57nM 1A1 selective inhibitor, it only inhibits ALDEFLUOR above its 1A3 IC_{50} ($3 \mu\text{M}$).²⁷ More potent ALDEFLUOR inhibition for DEAB in two 1A1 high cell lines, MIA PaCa-2 (IC_{50} $3.4 \mu\text{M}$) and HT-29 (IC_{50} $1.7 \mu\text{M}$), has previously been reported.²⁶

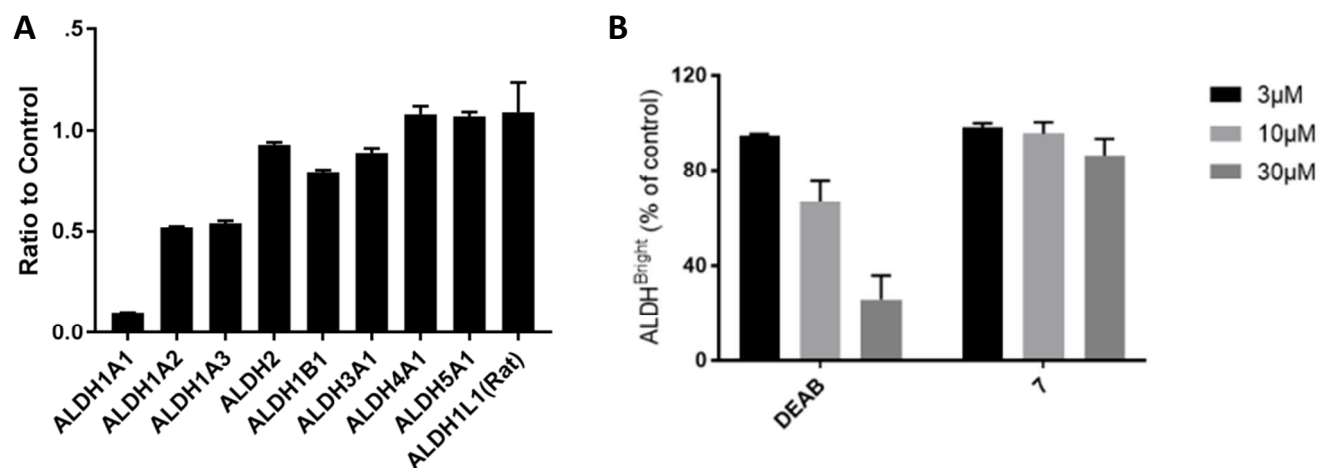


Figure 2. (A) Fraction of enzyme activity remaining for 9 ALDH isoforms in the presence of $20 \mu\text{M}$ **7**. (B) Percent control ALDH^{Bright} cells remaining following treatment of PEO1 cells at the specified concentration with DEAB (**1**) or compound **7** (N=2).

Crystal structure of ALDH1A1 complexed with **7:** To guide the design of new analogs, an X-ray crystal structure of **7** bound to N121S ALDH1A1 was obtained with a resolution of 2.1\AA (PDB code 5TEI, Figure 3A, Table S1, Figure S2). The known single nucleotide polymorphism (NCBI rs1049981) resulting in the N121S

missense mutation has been found in a small percentage of the HapMap-CEU population. There is no known clinical significance to the mutation and its structure is highly similar to the wild-type.³⁴⁻³⁵ The N121S enzyme crystallizes under identical conditions to the WT enzyme, but complexes with inhibitors are frequently easier to obtain, presumably due to dynamic fluctuations within the active site that are not detectable by crystallography and have little impact on observed potency. Furthermore, the IC₅₀ of **7** was comparable for the WT and N121S (0.9 and 0.7 μM respectively, Table 1, Supplementary Figure S1) Similar to the complex with **5a** (PDB code 4WP7), the bicyclic ring binds across the exterior 1/3 of the substrate binding pocket. The 3-fluorobenzyl group extends in towards the catalytic nucleophile (C303) and makes aromatic contacts with F171, W178 and F466. This binding mode is orthogonal to that for **4** (PDB code 4X4L), in which its tricyclic ring system extends toward both C303 and W178 (Figure 3B).³⁵ The core heterocycle of **7** binds similarly to the substituted xanthine ring of **5a**, binding beneath Y297 and occupying the additional active site volume afforded by the 1A1-specific residue, G458. Other ALDH1/2 isoenzymes have either an Asn or Asp residue at position 458 which may drive selectivity by prohibiting a similar binding mode in these isoforms. There appears to be room for small substitutions on the pyrazole at N-1 but not N-2, suggesting that larger substituents at these positions will not be tolerated without alteration of the binding pose. The lipophilic 2-methylphenyl ring binds near a relatively polar region of the 1A1 active site, suggesting that appropriate polar substituents could improve or maintain binding affinity while lowering cLogP. The 3-fluorobenzyl ring attached to the sulfur projects into the deepest section of the active site and maximizes contacts with the aromatic residues near the catalytic nucleophile, C303. The apparent goodness of fit of the 3-fluorobenzyl substituent, as well as its expected metabolic stability, encouraged us to retain it for the initial set of analogs based on **7**.

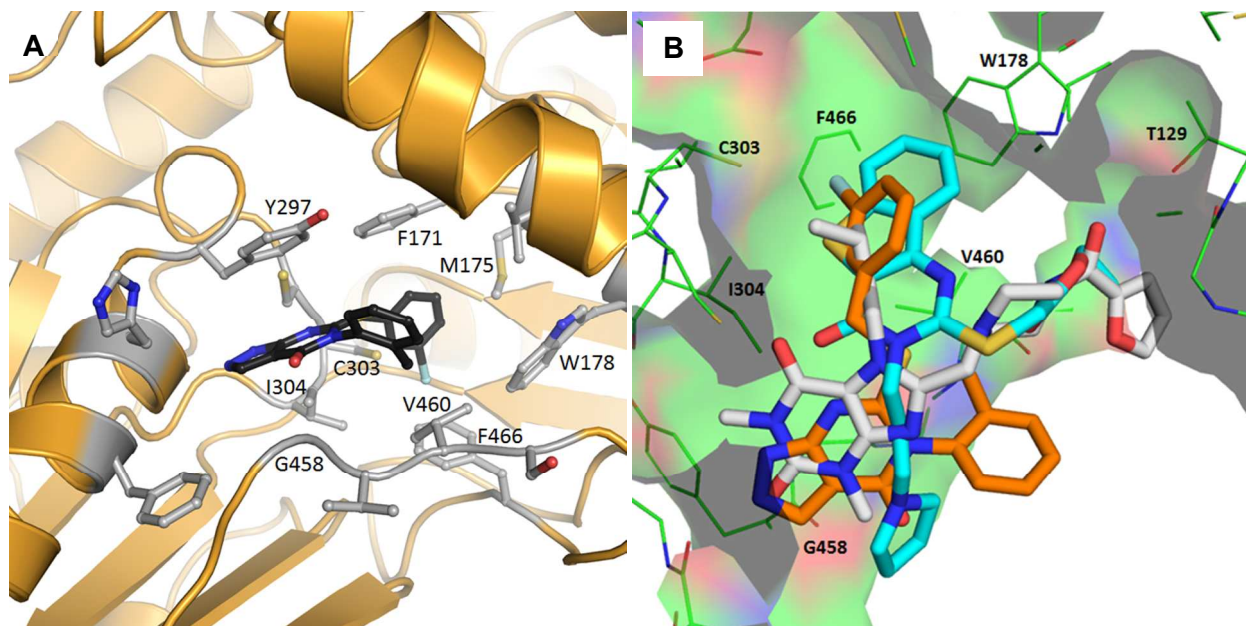
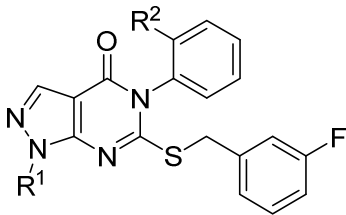


Figure 3. Structure of ALDH1A1 N121S with **7** (2.10 Å, PDB 5TEI). (A) The fluorophenyl of compound **7** projects into the lipophilic pocket towards the catalytic cysteine (C303). Key residues are labelled. (B) Overlay of Compounds **4** (Cyan, PDB entry 4WP7), **5a** (Grey, PDB Entry 4X4L), and **7**(Orange) bound in ALDH1A1.

Table 1. Characterization of N-1 alkylated analogs



Cmpd No.	R ¹	R ²	ALDH IC ₅₀ ^a (μM) or % control at 20 μM ^b				cLogP	Aq. Sol. ^c (μM)	MLM t _{1/2} (min)
			1A1	1A2	1A3	2			
7	H	Me	0.9 ± 0.2	53%	53%	85%	5.2	2	9
11	H	H	0.45 ± 0.03	0.67 ± 0.08	0.39 ± 0.02	94%	4.7		
12a	Me	Me	0.66 ± 0.06	52%	4 ± 1	94%	4.8	38	
12b	c-PrCH ₂	Me	0.18 ± 0.01	>10	>10	100%	5.6		
12c	3-oxetanyl	Me	0.26 ± 0.03	6 ± 1	60%	96%	4.7		
12d	3-oxetanyl-CH ₂	Me	0.42 ± 0.01	45%	58%	97%	4.7		
12e	Me	H	0.08 ± 0.01	0.15 ± 0.01	0.09 ± 0.01	100%	4.3	<0.7 (BLQ) ^d	8
12f	c-PrCH ₂	H	0.56 ± 0.03	1.26 ± 0.08	0.55 ± 0.02	83%	5.1		
12g	3-oxetanyl	H	0.13 ± 0.01	0.23 ± 0.01	0.17 ± 0.01	94%	4.1	8	
12h	3-oxetanyl-CH ₂	H	0.34 ± 0.07	1.1 ± 0.1	0.61 ± 0.09	96%	4.1		

Values are expressed as ^a Mean ± SEM (n=3), ^b Mean (n=3); ^c Thermodynamic solubility analysis was performed by Analiza Inc. using quantitative nitrogen detection. (www.analiza.com); ^dBLQ = below limit of quantitation.

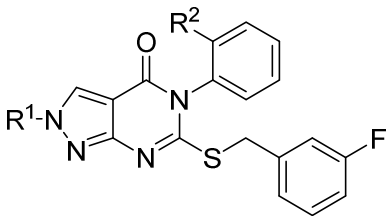
Structure-Activity Relationships (SAR): All new compounds were tested for inhibition of ALDH1A1, 1A2, 1A3, and 2. Selected compounds were also tested for thermodynamic aqueous solubility and stability in the presence of mouse liver microsomes (MLM).

We began our SAR campaign by generating N-alkylated analogs to fill the small lipophilic pocket adjacent to Ile304. We also hypothesized that eliminating the moderately acidic (pK_a = 8.1⁴²) pyrazole N-H might improve cell permeability. Encouragingly, methylation at N-1 (Table 1, **12a**) resulted in a modest improvement in 1A1 inhibition compared to **7**. Consistent with a reduction in cLogP⁴² aqueous solubility was also improved. Installing the larger cyclopropyl-methyl substituent (**12b**) improved the 1A1 IC₅₀ but did not

1 improve potency against 1A2 or 1A3. The unfavorable cLogP (5.6) of **12b** encouraged us to explore less
2 lipophilic oxetanyl analogs **12c-d**. **12c** maintained comparable potency against 1A1 with substantially lower
3 cLogP (4.7). The homologated oxetane **12d** was 2-fold less potent against 1A1, suggesting that larger
4 substituents would not be tolerated.
5
6
7

8
9 In an effort to pare down the **CM39** scaffold to the key pharmacophore, we discovered that removing
10 the R² methyl markedly improved inhibition of 1A2 and 1A3 affording compound **11**, which potently inhibited
11 all three ALDH1A isoforms but retained excellent selectivity over ALDH2. We revisited the panel of N-1
12 substituents (**12e-h**) and observed different SAR trends. The small N-methyl substituent of **12e** afforded the
13 most potent of the four analogs tested but exhibited very poor solubility. Given the lower cLogP of **12e**
14 compared to **7** or **12a**, we believe the poor solubility is best explained by the increased planarity of **12e**. The
15 MLM stability of **12e** was unchanged relative to **7**. The bulkier cyclopropyl-methyl and oxetanyl-methyl
16 substituents of **12f** and **12h** both resulted in 4-fold or greater reduction in potency against the ALDH1A family
17 relative to **12e**. The smaller oxetanyl substituent of **12g** was only slightly less potent than **12e** and afforded a
18 modest improvement in aqueous solubility. *The divergent SAR trends for 12a-d compared to 12e-h suggested*
19 *that, upon removal of the o-methyl, a new binding mode was accessible.*
20
21
22
23
24
25
26
27
28
29
30
31
32
33
34
35
36
37
38
39
40
41
42
43
44
45
46
47
48
49
50
51
52
53
54
55
56
57
58
59
60

Table 2. Characterization of N-2 alkylated analogs



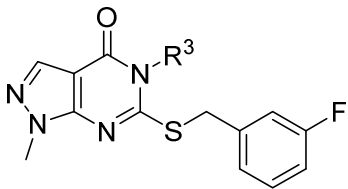
Cmpd No.	R ¹	R ²	ALDH IC ₅₀ ^a (μM) or % control at 20 μM ^b				cLogP	Aq. Sol. ^c (μM)	MLM t _{1/2} (min)
			1A1	1A2	1A3	2			
13a	Me	Me	0.67 ± 0.07	6 ± 1	2.2 ± 0.4	100%	5.3		
13b	c-Pr-CH ₂	Me	0.10 ± 0.01	>10	1.0 ± 0.1	100%	6.1		
13c	3-oxetanyl	Me	0.44 ± 0.06	8 ± 1	3.9 ± 0.4	100%	5.2		
13d	3-oxetanyl-CH ₂	Me	0.20 ± 0.03	3.9 ± 0.3	2.6 ± 0.3	98%	5.2		
13e	Me	H	0.25 ± 0.01	0.34 ± 0.05	0.13 ± 0.01	94%	4.8	69	13
13f	c-Pr-CH ₂	H	0.13 ± 0.03	1.1 ± 0.2	0.17 ± 0.03	87%	5.6		
13g	3-oxetanyl	H	0.08 ± 0.01	0.25 ± 0.04	0.12 ± 0.02	97%	4.7	5	23
13h	3-oxetanyl-CH ₂	H	0.27 ± 0.01	0.48 ± 0.04	0.13 ± 0.01	99%	4.7	53	27

Values are expressed as ^a Mean ± SEM (n=3), ^b Mean (n=3), ^c Thermodynamic solubility analysis was performed by Analiza Inc. using quantitative nitrogen detection. (www.analiza.com);

N-2 alkylated analogs were also tested to further probe the flexibility of the binding mode depicted in the **CM39** crystal structure (**Table 2**). **13a** exhibited a similar ALDH1A inhibition profile to **12a**. Extending to bulkier substituents (**13b-d**) resulted in improved 1A1 potency with the cyclopropyl-methyl being optimal, providing strong evidence for an alternative binding mode. **13a-d** were more potent against 1A3 than the corresponding N-1 regioisomers (**12a-d**), as exemplified by the modestly 1A1/1A3 selective cyclopropyl-methyl analog **13b**. As we observed previously, removal of the *o*-methyl significantly improved the inhibition of 1A2 and 1A3 in analogs **13e-h**. Oxetane was the optimal N-2 substituent to achieve inhibition of all three ALDH1A isoforms (**13g**), while cyclopropyl-methyl (**13f**) afforded a potent 1A1/1A3 inhibitor with >5-fold

1 selectivity over 1A2. Despite having higher values for cLogP than the corresponding N-1 regioisomers, N-2
2
3 analogs were observed to be more polar by normal and reverse phase chromatography. Consistent with this
4
5 observation, the solubility of N-2 methyl analog **13e** was substantially improved over regioisomer **12e**. **13e** was
6
7 also moderately more stable in the presence of MLMs, leading us to prioritize N-2 substituted analogs for
8
9 further pharmacokinetic studies. Curiously, appending the oxetanyl substituent at N-2 (**13g**) was not favorable
10
11 for solubility as was observed at N-1 (**12g**). Reasonable aqueous solubility was restored for the homologated
12
13 analog **13h**. Perhaps resulting from steric blocking of N-dealkylation, **13g** and **13h** were about 2-fold more
14
15 stable in the MLM assay than **13e**. Exquisite selectivity over the closely related ALDH2 isoform was
16
17 maintained for all tested analogs, positioning the series as a useful set of tool compounds to probe the biological
18
19 effect of ALDH1A inhibition.
20
21
22
23
24
25
26
27
28
29
30
31
32
33
34
35
36
37
38
39
40
41
42
43
44
45
46
47
48
49
50
51
52
53
54
55
56
57
58
59
60

Table 3. Characterization of N-phenyl modifications



Cmpd No.	R ³	IC ₅₀ ^a (μM) or % control at 20 μM ^b				Aq. Sol. ^d (μM)
		ALDH				
		1A1	1A2	1A3	2	
12a	2-Me-Ph	0.66 ± 0.06	52%	4 ± 1	94%	38
12e	Ph	0.08 ± 0.01	0.15 ± 0.01	0.09 ± 0.01	100%	<0.7 (BLQ) ^e
15a	2-Cl-Ph	0.25 ±0.04	75%	10 ± 2	100%	
15b	3-Cl-Ph	4.1 ± 0.6	0.56 ± 0.06	2.6 ± 0.3	100%	
15c	4-Cl-Ph	69%	1.1 ± 0.1	0.75 ± 0.05	100%	
15d	2-F-Ph	0.11 ± 0.01	8% ^c	1% ^c	90%	55
15e	2-OMe-Ph	0.97 ± 0.10	>10	>10	100%	
15f	3-OMe-Ph	41%	1.3 ± 0.1	44%	82%	
15g	4-OMe-Ph	8.2 ± 0.7	1.77 ± 0.09	0.78 ± 0.09	86%	
15h	3-Pyridyl	3.83 ± 0.03	45%	117%	99%	
15i	4-Pyridyl	52%	52%	60%	97%	
15j	2-Pyridyl	2.4 ± 0.4	64%	67%	99%	
15k	Bn	0.89 ± 0.13	0.72 ± 0.04	>10	100%	5
15l	Ph-CH ₂ -CH ₂	1.4 ± 0.15	0.9 ± 0.1	0.18 ± 0.04	87%	3
15m	Me	4.1 ± 0.37	79%	66%	95%	

Values are expressed as ^a Mean ± SEM (n=3), ^b Mean (n=3); ^c Dose response curves were not satisfactory for IC₅₀ determination; ^dThermodynamic solubility analysis was performed by Analiza Inc. using quantitative nitrogen detection. (www.analiza.com); ^eBLQ = below limit of quantitation.

The substantial increase in inhibition across the ALDH1A subfamily upon removal of the *o*-methyl in R³ (12e) prompted us to further probe the effect of varied substitutions at this position as shown in Table 3. We

retained the N-1 methyl substituent of **12e** for synthetic ease. Although we had evidence to suggest the binding mode of **7** depicted in the crystal structure was flexible, we began by designing R³ analogs according to the crystal structure. The R³ region of **7** is flanked by a region of exposed peptide backbone (residues 458-460) and the sidechain of N121 (S121 in WT), suggesting that polar interactions in this region might improve binding over the lipophilic 2-methylphenyl. Additionally, as the R³ methyl-phenyl is partially solvent exposed, polar solubilizing moieties were expected to improve pharmacokinetic properties without substantial loss of potency. Unfortunately, all attempts to alter the phenyl present in **12e** resulted in significant loss of activity across the ALDH1A subfamily. Nevertheless, interesting selectivity trends did emerge. Substituents other than methyl at the ortho position (Cl, OMe) also rendered compounds 1A1 selective, but decreased 1A1 potency (**15a** and **15e**) relative to proteo analog **12e**. Chloro analog **15a** showed a twofold improvement in potency (1A1 IC₅₀ = 250 nM) compared to **12a**. Because of the comparable size of Cl and CH₃, this difference suggested a preference for electron withdrawing groups; however, the electron-deficient fluorinated analog **15d** was merely equipotent with **12e** despite the similar size of the substituents. Electron-rich methoxy analog **15e** was four-fold less potent against 1A1 than **15a**. Meta substituents rendered analogs **15b** and **15f** modestly 1A2 selective. Consistent with our hypothesis that disruption of planarity is favorable for solubility in this series, **15b** was considerably more soluble than **12e**. Addition of a chlorine in the para position resulted in a 1A2/1A3-selective inhibitor vs 1A1 (**15c**), while para methoxy analog **15g** exhibited very modest selectivity for 1A3. Pyridyl analogs **15h-j** were substantially less potent across the ALDH1A family, perhaps reflecting a desolvation penalty without formation of productive hydrogen bonds within the active site. Benzyl analog **15k** inhibited 1A1 and 1A2 with good selectivity over 1A3. Homologation to phenylethyl analog **15l** resulted in potent inhibition of 1A3 (IC₅₀ = 180 nM) with more than 5-fold selectivity over 1A1 and 1A2 and greater selectivity over other ALDH isoforms as shown in **Figure 4**. Replacing the phenyl of **12e** with a methyl group led to a large decrease in potency (**15m**). The steep SAR at R³, inconsistent with partial solvent exposure, was further evidence that the binding mode depicted in the crystal structure of **7** was no longer relevant.

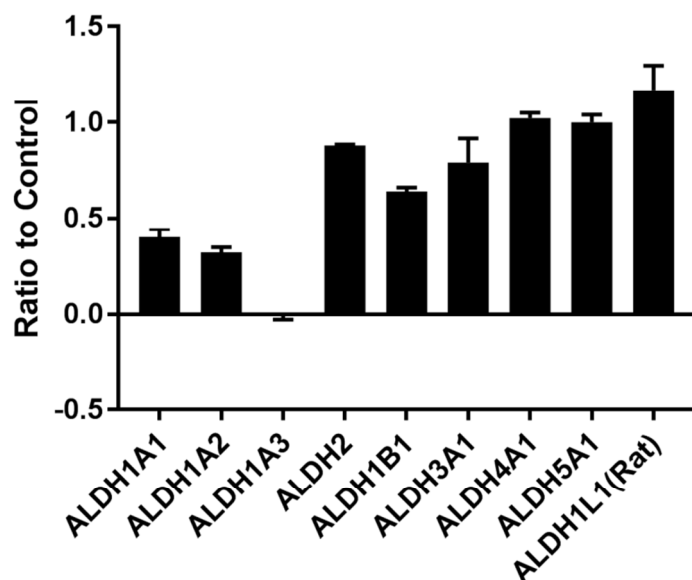


Figure 4. Fraction of enzyme activity remaining for 9 ALDH isoforms in the presence of 20 μ M **15l**.

Crystal structure of ALDH1A1 complexed with compound 13g: To elucidate the change in binding mode we suspected, we obtained a co-crystal structure of N121S ALDH1A1 with compound **13g** resolved to 2.0 Å (PDB code 6DUM) (Figure 5, Table S1, Figure S3). The structure revealed a dramatically different binding pose for **13g** in which the R³ N-phenyl is situated near the catalytic cysteine. The N-phenyl is flanked by Phe171 and Phe466, potentially explaining why steric bulk and polarity are not tolerated at the ortho and meta positions (Table 3). It is more difficult to justify why para substituents are so poorly tolerated. In contrast to the binding pose of compound **7**, there is room for fairly large N-2 pyrazole substituents to extend across the mouth of the active site. Consistent with this observation, larger substituents at N-2 improve 1A1 potency (**13f** and **13g**) relative to methyl analog **13e**. As expected, given that large substituents at N-1 would project into solvent, compounds **12f-h** do not improve potency over methyl analog **12e**.

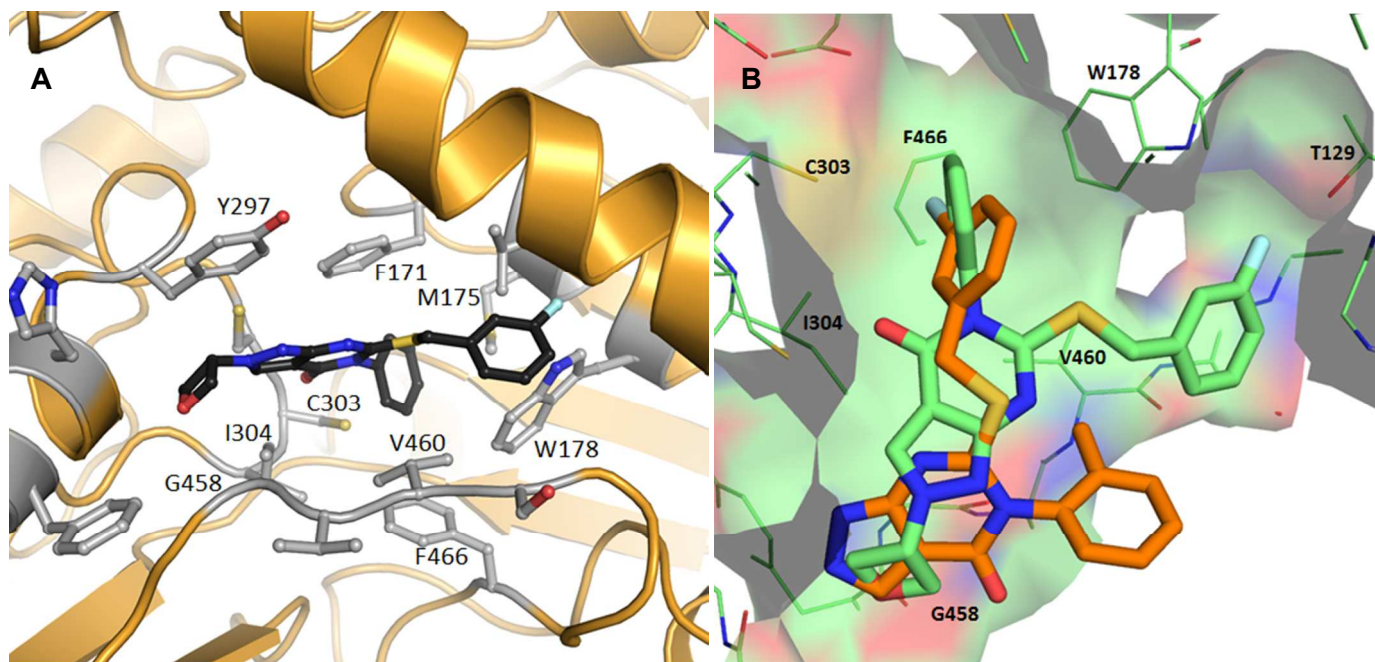


Figure 5. (A) X-Ray crystal structure of **13g** bound to ALDH1A1 (PDB code 6DUM). (B) Overlay of compounds **7** (PDB code 5TEI) (Orange) and **13g** (Green).

Homology Modeling: In order to better understand the SAR of these compounds, we performed a molecular docking study of select compounds against all isoforms of the ALDH1A class. At the time this manuscript was drafted, no high quality crystal structures were available for 1A2 and 1A3. Recently, Chen et al. disclosed high quality structures of 1A2 with small molecules bound in the active site (e.g. PDB code 6B5H).⁴³ We opted for building our own homology models of 1A2 and 1A3 isoforms based on the PDB structure of ALDH1A1 reported here. Homology models were developed on Swiss-Model Workspace using ProMod3. The quality of the models was assessed by QMEAN scores as well as Ramachandran plots (Supplementary Figure S4,5). Furthermore, when comparing all residues in our 1A2 homology model with PDB:6B5H, the average RMSD was 0.76Å, indicative of an excellent homology model (Supplementary Figure S4). In order to prove robustness of our docking methods, we docked co-crystal ligands **7** and **13g** into the binding site of ALDH1A1. The docked poses for both ligands were in good agreement with the crystal structures with RMSD values of 0.8 and 1.0 Å for **7** and **13g**, respectively (Supplementary Figure S6).

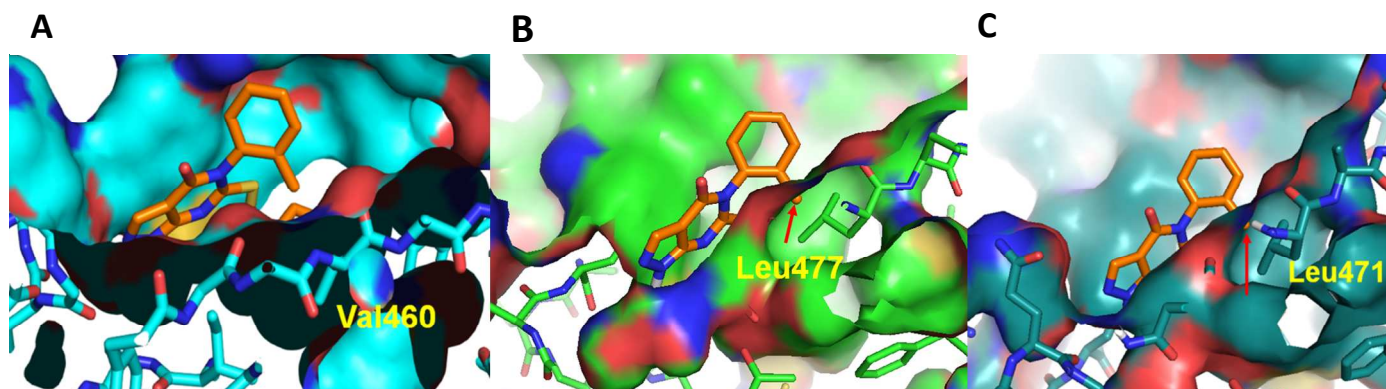


Fig 6. ALDH1A2 and 1A3 homology models provide rationale for isoform selectivity of Compound 7. (A) Val460 does not clash with *o*-methyl substituent of N-Phenyl in ALDH1A1- Compound 7 structure. (B, C) Docking poses of 7 in ALDH1A2 and ALDH1A3, respectively. Red arrow indicates that in both ALDH1A2 and A3, 2-methyl substituent at phenyl clashes with Leu477/471.

The molecular docking study of compound 7 in ALDH1A2 (Figure 6B) and 1A3 (Figure 6C) shows that the 2-methyl substituent on the phenyl ring would clash with non-conserved residues Leu477 (1A2) or Leu471 (1A3) if it adopted the same binding pose as in 1A1. The corresponding residue Val460 in ALDH1A1 (Figure 6A) avoids this steric clash with 2-methyl substituent. These observations agree with the observed 1A1 selectivity of 7.

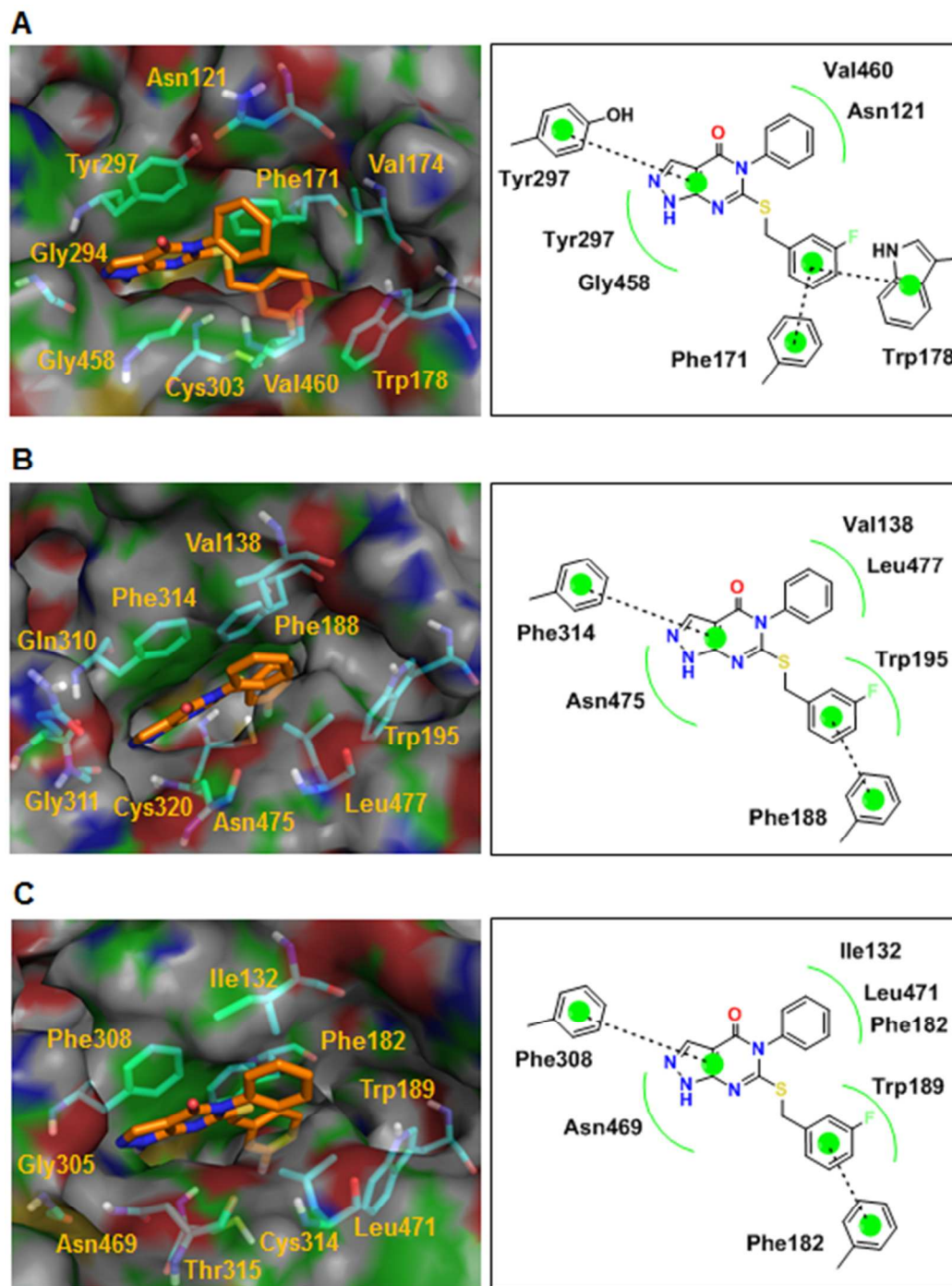
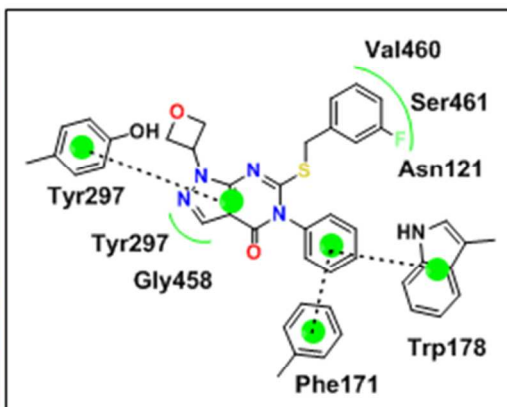
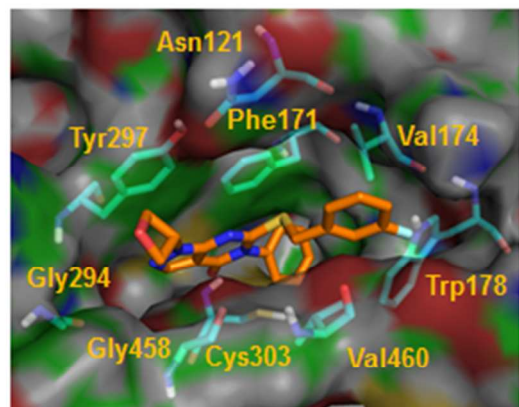


Figure 7. Compound **11** docks without clashes into the active sites of ALDH1A1, 1A2 and 1A3. (A) Structure and ligand interaction plot of Compound **11** docked into ALDH1A1 crystal structure. (B,C) Structure and ligand interaction plot of compound **11** docked into ALDH1A2, 1A3 homology models respectively.

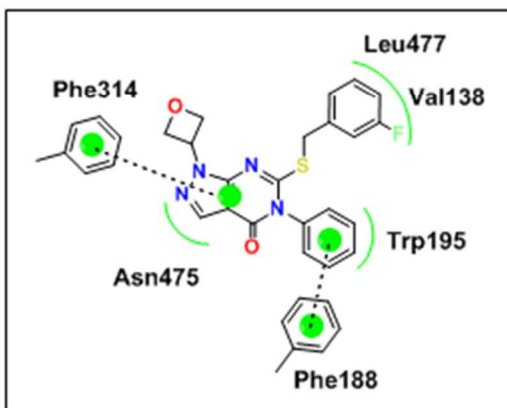
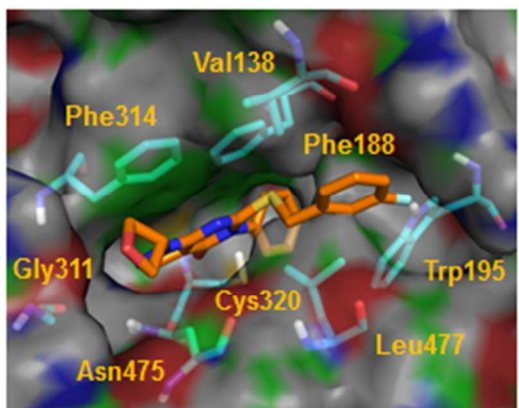
Des-methyl compound **11**, which is active against all ALDH1A isoforms, docks well into the active site of all three ALDH1A proteins (Figure 7). For ALDH1A1, the 3-fluorobenzyl ring engages in pi-pi interactions with both Phe171 and Trp178. The bicyclic ring makes a pi-pi interaction with Tyr297 and van der Waals

1 interactions with Gly458 and Tyr297, while the phenyl ring participates in van der Waals interactions with
2 Val460 and Asn121. In the active site of ALDH1A2, the bicyclic ring forms pi-pi interaction with Phe314 and a
3 van der Waals interaction with Asn475. The 3-fluorobenzyl ring makes a pi-pi interaction with Phe188 and van
4 der Waals hydrophobic interactions with Trp195, while the phenyl ring engages in van der Waals hydrophobic
5 interactions with Val138 and Leu477. In the case of ALDH1A3, the bicyclic ring of compound **11** makes a pi-pi
6 interaction with Phe308 and a van der Waals interaction with Asn469. The 3-fluorobenzyl ring forms a pi-pi
7 interaction with Phe182 and a van der Waals hydrophobic interaction with Trp189, while the phenyl ring makes
8 van der Waals hydrophobic interactions with Ile132, Phe182 and Leu477.
9
10
11
12
13
14
15
16
17
18
19
20
21
22
23
24
25
26
27
28
29
30
31
32
33
34
35
36
37
38
39
40
41
42
43
44
45
46
47
48
49
50
51
52
53
54
55
56
57
58
59
60

A



B



C

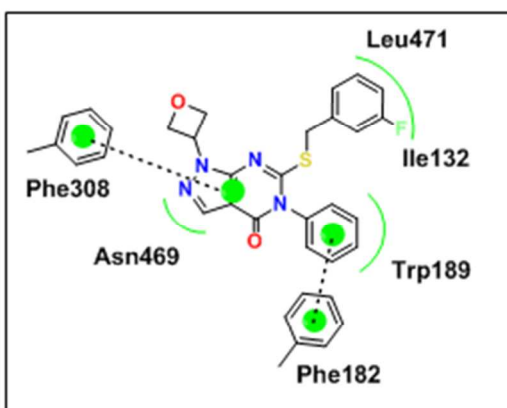
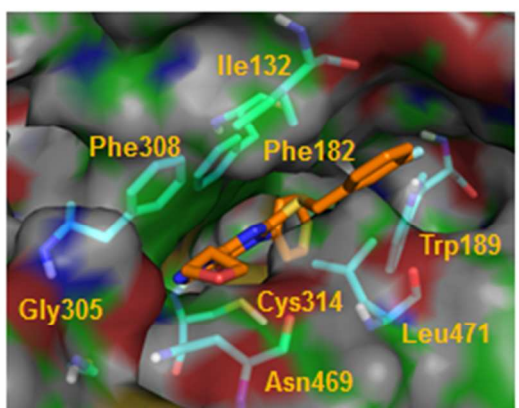


Figure 8. Docking of compound **12g** predicts a similar binding mode to the **13g** crystal structure for ALDH1A1, 1A2, and 1A3. (A) Structure and ligand interaction plot of Compound **12g** docked into ALDH1A1 crystal structure. (B,C) Structure and ligand interaction plot of compound **12g** docked into ALDH1A2, 1A3 homology models respectively.

When inhibitor **12g** was docked, it adopted a similar pose to the crystal structure of the regioisomer **13g**. The similar potency and isoform selectivity for these compounds is consistent with the relatively solvent

exposed nature of the oxetane in both cases. The phenyl ring docks deep in the cavity and forms pi-pi interactions with Phe171 and Trp178 (1A1), Phe188(1A2), Phe182(1A3) and van der Waals interactions with Trp195(1A2), Trp189(1A3) as shown in Figure 8. The 3-fluorobenzyl ring makes van der Waals interactions with Val460 and Asn121 (1A1), Leu477 and Val138 (1A2), and Leu471 and Ile132(1A3). The bicyclic ring of **12g** engages the same residues as **11** for the three isoforms. The predicted binding mode of Compound **13h** (Supplementary Figure S7), which is also active against all three isoforms, is similar to that of **12g**.

The modestly ALDH1A3 selective compound **15g**, which has a methoxy group at the 4-position of the phenyl ring, is predicted to bind ALDH1A3 in a similar fashion to **7** (Figure 9). The positioning of the methoxy group near the ALDH1A3 specific residue Glu135, may explain the selectivity of **7** towards ALDH1A3. In contrast, ALDH1A1 bears Ala124 at this position which could not form a favorable polar contact with the methoxy.

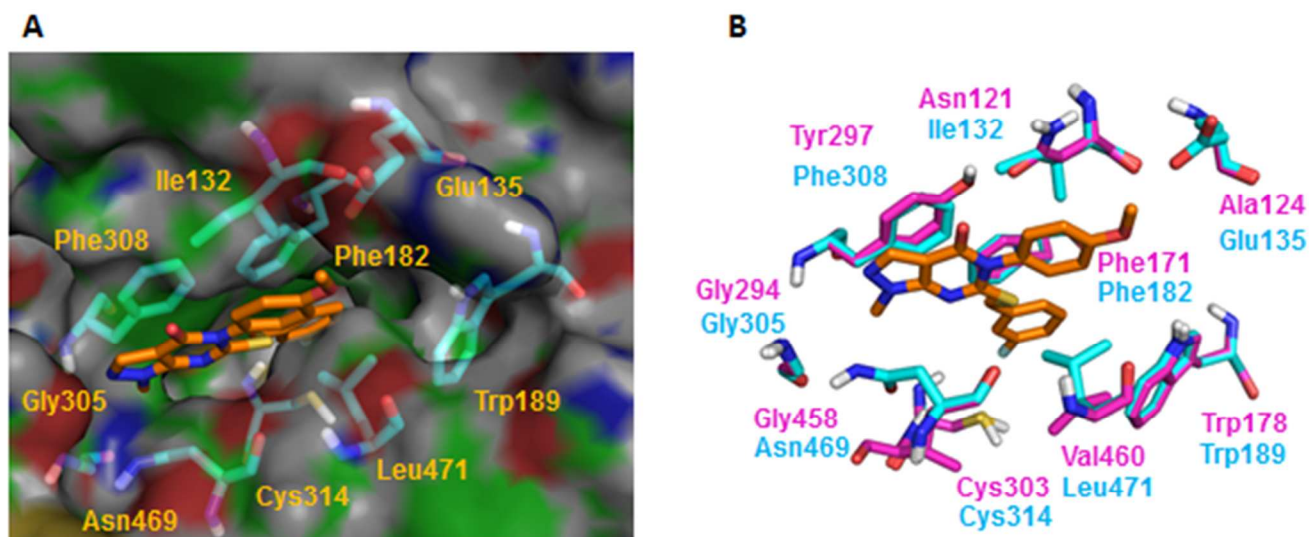


Figure 9. ALDH1A3 specific residue Glu135 may explain the observed selectivity of compound **15g**. (A) **15g** docked into the ALDH1A3 homology model. (B) Overlay of ALDH1A1 (pink) crystal structure with **15g** docked in the 1A3 homology model (cyan).

Confirming activity in live cells: We next performed the ALDEFLUOR assay (Stem Cell Technologies) in PEO1 and OVCAR5 cells, to confirm ALDH inhibition in live cells (Figure 10A, B). Given the association between ALDH1A3 expression and the high grade serous histology we chose cell lines with high 1A3 activity (Supplementary Figure S8).²⁴ PEO-1 is classified as a high grade serous ovarian cancer cell line.⁴⁴ OVCAR5, a commonly used cell line originally classified as high grade serous ovarian, may be gastrointestinal in origin.⁴⁵ The ALDH1A subfamily inhibitors **12g**, **13g**, and **13h** all exhibited strong inhibition of ALDEFLUOR signal with significant activity in both cell lines at 1 μ M and reductions of greater than 50% at 10 μ M. While both compounds inhibited ALDEFLUOR to some extent, the 1A3 selective compound **15l** was significantly better than 1A1 selective **DEAB**. The 1A2 selective inhibitor **15b** showed little to no inhibition at 30 μ M. Compound **15b** is reasonably soluble and has a lower TPSA and molecular weight than the efficacious inhibitors, suggesting that this effect is indeed due to its isoform selectivity profile and not simply an inability to enter the cell. Despite having biochemical 1A3 IC₅₀s (0.12-0.17 μ M) that are very similar to **15l** (0.18 μ M), the inhibitors of all 3 ALDH1A isoforms, **12g**, **13g**, and **13h**, were somewhat superior in the ALDEFLUOR assay (statistically significant differences at 3 μ M are highlighted in Figures 10A and 10B). Although we cannot rule out variable cell penetration for the compounds as a potential cause, this may indicate that low levels of 1A1 and/or 1A2 expression in these cell lines slightly diminish the effective ALDEFLUOR inhibition of 1A3-selective **15l**. Low levels of 1A1 and 1A2 mRNA were in fact detected in OVCAR5 but not PEO1 cells (Supplementary Figure S8).

In addition to ALDH, the surface glycoprotein CD133 has also been used as a marker of stemness in many cancers including ovarian cancer, and its expression is correlated with poorer patient outcomes in ovarian cancer.^{7, 46} Interestingly, treating PEO1 and OVCAR5 cells with inhibitors **12g**, **13g**, and **13h** also elicited a dose dependent preferential reduction in the percentage of CD133⁺ cells (Figure 10C, D). The 1A1 selective **DEAB** was not effective in this assay, and the ALDH1A2 selective **15b** had only a modest dose-independent effect. The 1A3 selective compound **15l** depleted CD133⁺ cells at 30 μ M, but had no effect at 10 μ M.

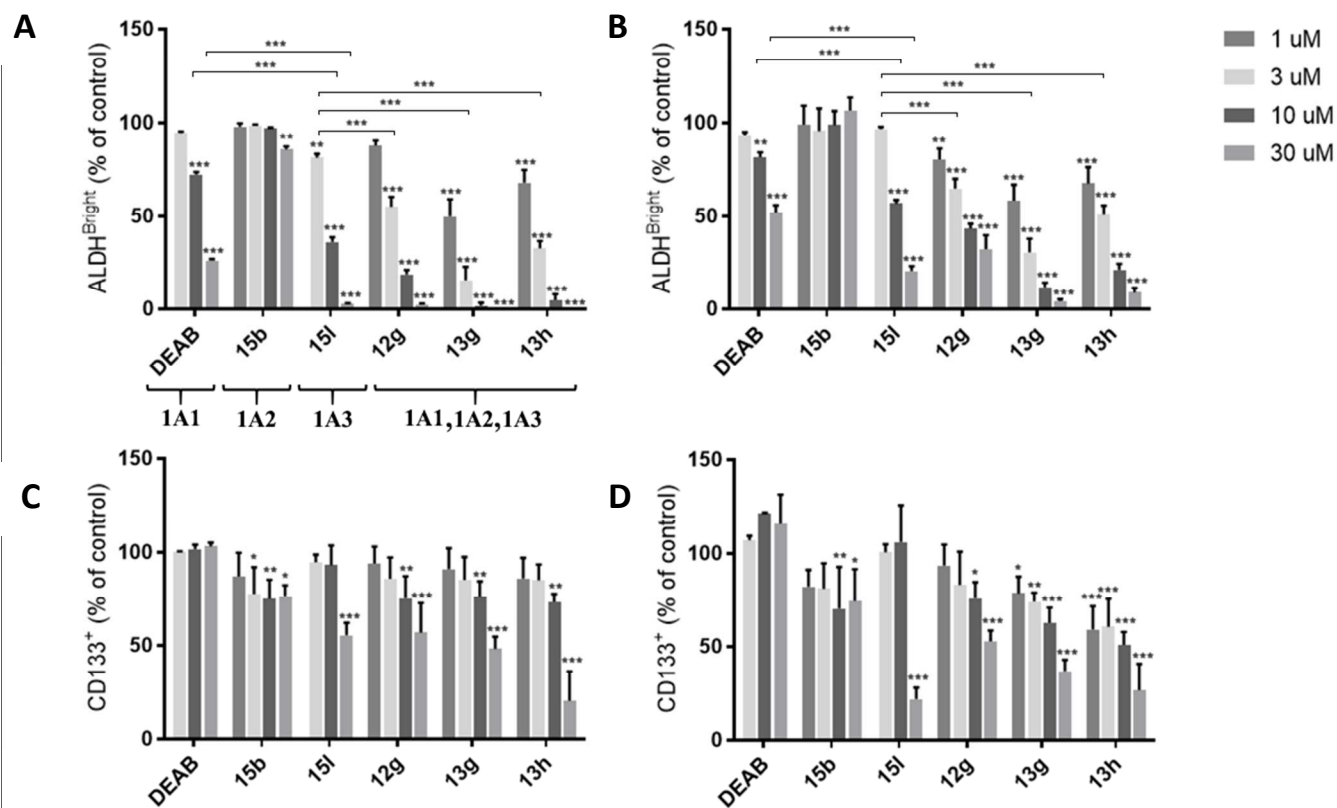


Figure 10. Compounds **15l**, **12g**, **13g**, and **13h** inhibit ALDH in cells and deplete cells bearing the putative CSC marker CD133. (A, B) Graphs showing changes in ALDEFLUOR activity in PEO1 (A) and OVCAR5 (B) cells following the specified treatment (N=3). (C, D) Graphs showing changes in the percent of CD133⁺ cells as determined by flow cytometry following 48 h drug treatment at the specified concentration (N=3-6) *p<0.05, **p<0.01, ***p<0.0001.

Evaluation of synergy with Cisplatin: ALDH1A family members are known to play a role in resistance to multiple chemotherapy agents⁴⁷⁻⁵⁰ and a reduction in their activity has been shown to restore sensitivity.^{16-22, 51-53} Therefore, we investigated the ability of our inhibitors with the best ALDEFLUOR activity to increase sensitivity to and potentially synergize with cisplatin in PEO1 and OVCAR5 cells. Using the Chou-Talalay method, we determined that **12g**, **13g**, and **13h** are highly synergistic (Combination Index values <1 indicate synergy with smaller numbers indicating stronger synergy) with cisplatin (Fig. 11A, B, Supplemental Fig. S9).⁵⁴ The observed synergy for **12g** and **13g** at 1 μ M was already strong but it was improved by increasing the concentration of these compounds to 10 μ M. While **12g** and **13g** alone did not show cytotoxicity at these doses, **13h** did and, therefore, had to be tested at lower doses. Nonetheless, synergy with **13h** was observed at concentrations as low as 0.3 μ M. As a control, we included the ALDEFLUOR inactive **15b**, which was

1 somewhat synergistic but was overall the least effective compound, especially at the lower concentrations of
2
3 cisplatin.

4
5 We similarly evaluated synergy using primary patient derived samples in a 3-D tumor spheroid
6
7 assay; a platform which mimics in vivo growth (Fig 11C).⁵⁵⁻⁵⁶ As **13h** showed comparable synergy to **12g** and
8
9 **13g** at 3-fold lower concentrations in the initial synergy studies, we tested this compound. Ovarian cancer
10
11 spheroids, compared to 2D monolayer culture, are more resistant to standard therapies and express higher levels
12
13 of ALDH1A1.^{20, 57} The sphereoids employed in this experiment express both 1A1 and 1A3 as determined by
14
15 qRT-PCR (Supplementary Figure S10). Treatment of patient derived ovarian cancer spheroids with 0.3 μ M **13h**
16
17 did not significantly reduce viability as monotherapy. However it was highly synergistic with all three
18
19 concentrations of cisplatin tested (Fig 11C, Combination indices 0.08-0.27).⁵⁴ Similar to our observations,
20
21 Condello et al. report that concentrations of **4** below its ALDEFLUOR IC₅₀ are able to potentiate the effects of
22
23 cisplatin against ovarian cancer spheroids.²⁰
24
25
26
27
28
29
30
31
32
33
34
35
36
37
38
39
40
41
42
43
44
45
46
47
48
49
50
51
52
53
54
55
56
57
58
59
60

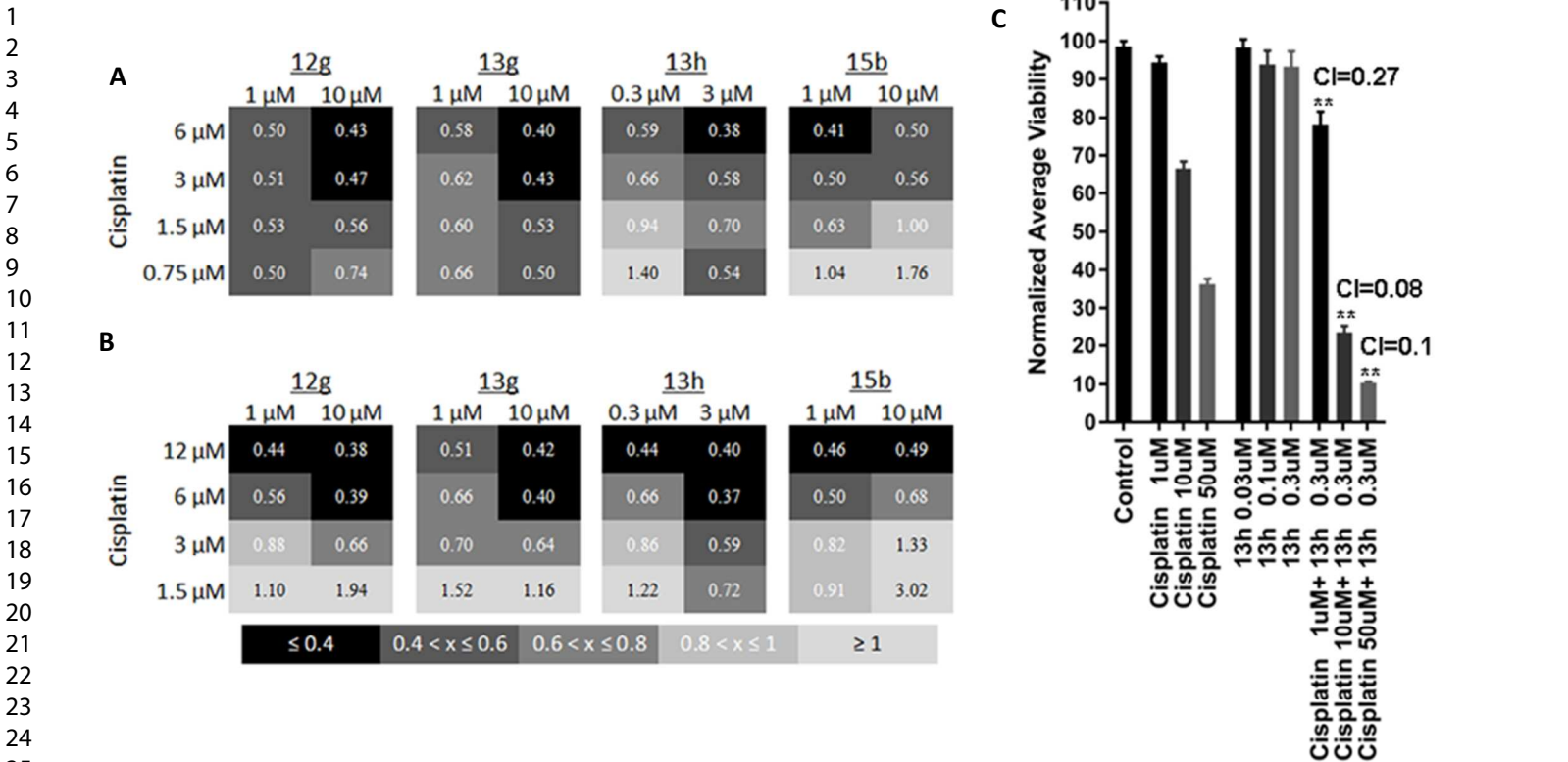


Figure 11. Compounds **12g**, **13g**, and **13h** synergistically enhance the effect of cisplatin on ovarian cancer cell lines and patient derived spheroids. (A, B) Representative heatmaps of combination indices for PEO1 (A) and OVCAR5 (B) cells cultured for 72 h in the presence of cisplatin and the indicated ALDH inhibitor at the concentrations shown. (N=3) (C) Normalized average viability as determined using Alamarblue dye following exposure to the specified compounds for 72 hours. (N=5-8) * $p \leq 0.05$, **** $p \leq 0.0001$ one way ANOVA compared to Control. Combination indices for the specified drug combinations calculated using CompuSyn software. (CI < 1 indicates synergy) (<http://www.combosyn.com>).⁵⁴

Table 6. In Vivo exposure following IP injection in mice.

Compound	Plasma Concentration (μ M)				AUC _{0-7h} ^{obs} (hr· μ M)
	0.5 h	2 h	4 h	7 h	
13g	7.6 \pm 0.8	5.2 \pm 1.0	3.0 \pm 1.3	0.9 \pm 0.7	27.8
13h	5.6 \pm 0.2	2.6 \pm 0.6	0.6 \pm 0.2	0.1 \pm 0.1	11

Compounds at the specified doses were administered by a single intraperitoneal injection of 10mg/kg to CD-1 mice. Values expressed as Mean \pm S.D for 3 mice at each timepoint.

In Vivo Murine Metabolic Stability: Given that **13g** and **13h** showed promising cellular activity and were the most stable in the presence of MLM among compounds tested, we assessed in vivo exposure following IP injection in mice (Table 6). Despite the two compounds having very similar MLM stability, the AUC for **13g**

was more than double that of **13h**. Plasma concentration of **13g** exceeded 1 μM , the concentration needed for 50% inhibition of ALDEFLUOR (Figure 10A,B), for nearly 7 hours. **13h** exceeded 0.3 μM , an efficacious dose in the spheroid cisplatin synergy assay (Figure 11C), for almost 4 hours.

CONCLUSIONS

In order to explore the structural determinants of ALDH1A isoform selectivity, we generated a number of analogs of lead compound **7** guided by a co-crystal structure with 1A1. Expedient synthetic routes were developed to allow late-stage diversification at multiple sites. The observation that the ortho-methyl group on the N-phenyl was disfavorable to binding across the ALDH1A subfamily led to the first potent inhibitors of the three ALDH1A isoforms with excellent selectivity over ALDH2 (e.g. **12e**). Small structural changes led to a new binding mode for compound **13g**, explaining SAR trends which did not agree with the 1A1 crystal structure for lead compound **7**. We demonstrated that remarkable changes in ALDH1A isoform-selectivity can be achieved by minor structural changes to the N-phenyl substituent, which binds in the narrow lipophilic region of the active site near the catalytic cysteine according to the **13g-1A1** structure. In the course of exploring SAR at this position we discovered the 1A2 selective compounds **15b** and **15f**, and the 1A3 selective compounds **15g** and **15l**. Although selectivity within the ALDH1A subfamily is modest, *to our knowledge, these are the first examples of ALDH1A2 and ALDH1A3 selective inhibitors with excellent selectivity against ALDH2*. Further efforts to create more potent and selective 1A2 and 1A3 inhibitors are underway.

Our preliminary data lead us to hypothesize that ALDEFLUOR activity will be improved by inhibiting multiple ALDH1A isoforms simultaneously as compared to an equipotent 1A3 selective compound (**12g**, **13g**, **13h** vs. **15l**), even in cell lines which only express detectable levels of 1A3. This hypothesis will require more extensive cell testing to confirm our preliminary findings. Testing optimized compounds in an expanded panel of cell lines which express various ALDH1A isoforms will be necessary and is underway.

Interestingly **12g**, **13g**, and **13h** depleted the CD133⁺ putative stem cell pool in a dose dependent manner, and synergized with cisplatin at a range of concentrations. **13h** also showed synergy with cisplatin in patient derived ovarian cancer spheroids. Compound **13g** furthermore shows promising PK properties for in

vivo studies, exceeding its efficacious cellular concentration in plasma for nearly 7 hours following 10mg/kg IP administration in a preliminary study. Xenograft studies on optimal compounds will be reported in due course. Future medicinal chemistry development of this series will focus on further improving enzymatic and cellular potency and pharmacokinetic properties, as well as tuning the selectivity profile among the ALDH1A isoforms in order to generate diverse probes for establishing the contribution of individual isoforms to cellular activity.

EXPERIMENTAL SECTION

Crystal Structure Determination. Crystals of ALDH1A1 N121S were grown by equilibrating 4-8 mg/mL ALDH1A1 N121S against 100 mM sodium BisTris, pH 6.2-6.5, 6-11% PEG3350, 200 mM NaCl, and 5-10 mM YbCl₃. The crystal of ALDH1A1 N121S in complex with **7** was prepared by soaking approximately 2-week old apo crystals for 6 hr in crystallization solution containing 500 μ M **7** with 1% (v/v) DMSO and 1 mM NAD. The crystal of ALDH1A1 N121S in complex with **13g** was prepared by soaking apo crystals for 1 hr in crystallization solution containing 1 mM NAD followed by soaking overnight in crystallization solution containing 500 μ M **13g** with 2% (v/v) DMSO and 1 mM NAD. Cryoprotection for flash-freezing was 20% (v/v) ethylene glycol in ligand soaking solution. Diffraction data for **7** in complex with ALDH1A1 N121S was collected at Beamline 23-ID-D (GM/CA), National Institute of General Medicine Sciences and National Cancer Institute of the NIH at APS. Diffraction data for **13g** in complex with ALDH1A1 N121S was collected at Beamline 19-ID operated by the Structural Biology Consortium at the Advance Photon Source (APS), Argonne National Laboratory. Diffraction data were indexed, integrated, and scaled using HKL3000.⁵⁸ The CCP4 program suite was used for molecular replacement and refinement.⁵⁹ The Coot molecular graphic application was used for model building.⁶⁰ The TLSMD (translation/libration/screw motion determination) server was used to determine dynamic properties of ALDH1A1 N121S.⁶¹⁻⁶²

Protein Purification and Enzymatic Assays

Human ALDH1A1, ALDH1A2, ALDH1A3, ALDH2, ALDH1B1, ALDH3A1, ALDH4A1, ALDH5A1 and rat ALDH1L1 were prepared and purified as previously described.^{27, 63-66}

Inhibition of ALDH activity by compounds and IC₅₀ curves were determined by measuring the formation of NAD(P)H spectrophotometrically at 340 nm (molar extinction coefficient of 6200 M⁻¹ cm⁻¹) on the Beckman DU-640 and Spectramax 340PC spectrophotometers using purified recombinant enzyme. Reaction components for ALDH1A and ALDH2 assays consisted of 100-200 nM enzyme, 200 μM NAD⁺, 100 μM propionaldehyde, and 1% DMSO in 25 mM BES buffer, pH 7.5. For ALDH1B1, the assay included 500 μM NAD⁺ and 200 μM propionaldehyde. For ALDH3A1, the assay included 300 μM NADP⁺, 20 nM enzyme, and 300 μM benzaldehyde. For ALDH4A1 and ALDH5A1, the assay included 1.5 mM NAD⁺, 100 nM enzyme, with 20 mM propionaldehyde for ALDH4A1 and 2 mM propionaldehyde for ALDH5A1. For rat ALDH1L1, the assay included 0.5 mM NADP⁺, 200 nM enzyme and 4 mM propionaldehyde. All assays were performed at 25°C and were initiated by addition of substrate after a 2 min incubation period. IC₅₀ curves were collected for compounds which substantially inhibited ALDH1A activity at 20 μM compound. Data were fit to the four parameter EC₅₀ equation using SigmaPlot (v12) and the values represent the mean/SEM of three independent experiments (each n=3).

ALDEFLUOR assay: PEO1 and OVCAR5 cells were grown in RPMI 1640 media (Corning) containing 2 mM glutamine, 2 mM sodium pyruvate (PEO1 only, Gibco), 10% FBS (Sigma), and 1X Pen/Strep (Gibco). When the cells reached 80% confluency they were harvested by trypsinization and assayed for ALDH activity using the aldefluor assay (STEMCELL Technologies). Briefly, the cells were washed with PBS before being centrifuged and resuspended in ALDEFLUOR buffer. Once the cells were resuspended in ALDEFLUOR buffer, the ALDEFLUOR reagent was added. The cells were quickly mixed and evenly distributed into 1.5 mL Eppendorf tubes containing inhibitor or vehicle. The tubes were incubated for 30 minutes at 37 °C. Next, the tubes were centrifuged, the buffer containing the ALDEFLUOR reagent was removed, and the cells were

resuspended in fresh ALDEFLUOR buffer that had been kept on ice. The tubes were kept on ice until they were analyzed on an Accuri C6 flow cytometer (BD). The percent of control values were calculated using the percentage of ALDEFLUOR positive cells for a particular sample and the percentage of ALDEFLUOR positive cells in the control sample (vehicle treated). The percentage of ALDEFLUOR positive cells was graphed in Prism 7 (GraphPad) and is displayed as mean \pm SD. The Two-way ANOVA with Tukeys multiple comparison test within Prism 7 (GraphPad) was used to determine statistical significance between samples treated with compound or vehicle.

CD133⁺ cell assay: PEO1 and OVCAR5 cells were grown in RPMI 1640 media (Corning) containing 2mM glutamine, 2mM sodium pyruvate (PEO1 only, Gibco)10% FBS (Sigma), and 1X Pen/Strep (Gibco). When the cells reached 80% confluency they were harvested by trypsinization, washed with PBS, and reseeded in 6-well plates at 1×10^5 cells/well. The cells were allowed to recover for 24 h, inhibitor or vehicle was added, and the cells were put back into the incubator for 48 h. Following the 48 h incubation, the cells were harvested and counted. An equal number of cells were isolated from each sample. The cells were washed with PBS and resuspended in fresh PBS. CD133/2-APC antibody (Miltenyi Biotec) was added at a dilution of 1:100. The cells were mixed and incubated at room temperature for 10 minutes. Next, ten times the volume of PBS was added and the cells were centrifuged. The cells were washed with PBS and resuspended in fresh PBS that had been kept on ice. The tubes were kept on ice until they could be analyzed on a Cytoflex S flow cytometer (BeckmanCoulter). The percentage of CD133 positive cells was graphed in Prism 7 (GraphPad) and is displayed as mean \pm SD. The Two-way ANOVA with Tukeys multiple comparison test within Prism 7 (GraphPad) was used to determine statistical significance between samples treated with compound or vehicle.

Cell Viability and synergy assays: PEO1 and OVCAR5 cells were grown in RPMI 1640 media (Corning) containing 2mM glutamine, 2mM sodium pyruvate (PEO1 only, Gibco)10% FBS (Sigma), and 1X Pen/Strep (Gibco). When the cells reached 80% confluency they were harvested by trypsinization, washed with PBS, and reseeded in 96-well plates at 4000 cells/well (PEO1) or 1500 cells/well (OVCAR5). The cells were allowed to

1 recover for 24 h, inhibitor or vehicle was added, cisplatin was added, and the cells were put back into the
2 incubator for 72 h. Following the 72 h incubation, the media was removed and a 1X solution of Cell-Titer Glo
3 2.0 (Promega) was added. The plates were mixed and allowed to incubate at room temperature for 10 min
4 before luminescence was read. Normalized viability was calculated by comparing the luminescence of drug-
5 treated wells to vehicle treated wells and expressed as a percentage. The percentage of viable cells was graphed
6 in Prism 7 and all data are displayed as mean \pm SD. Synergy was assessed using Chou-Talalay method and the
7 CompuSyn program.⁵⁴

17 **Hanging drop culture for patient derived spheroid formation:** Graded patient tumor samples (high grade
18 epithelial stage IIIC or IV, obtained from IRB approved protocol, and collected from consented patients) were
19 dissected, digested enzymatically using a mixture of Collagenase IV/Dispase, recovered by centrifugation and
20 filtered through a 500 μ m mesh to remove large debris. Resulting patient cells were suspended in serum-free
21 medium (SFM) supplemented with 5ng/ml FGF, 5ng/ml EGF, B27, 1X insulin-transferrin-selenium
22 supplement, 1X nonessential amino acids, antibiotics and antimycotics. Cell counts were obtained using a
23 hemocytometer and adjusted such that a 20 μ L volume contained 100 cells. Similar to previously established
24 protocol, patient derived spheroids were initiated using 100 CD133⁺ ALDH⁺ cells per spheroid.^{55, 57, 67}
25 Spheroids were maintained in SFM for a period of 10 days, and imaged using live phase contrast microscopy to
26 follow spheroid formation and maintenance.

41 **Drug treatment on patient derived spheroids in hanging drop array culture:** Patient derived spheroids were
42 initiated in 384-well hanging drop arrays using 100 cells per spheroid. Spheroids were allowed to aggregate and
43 form a 3D microtissue over a period of 10 days. For drug treatment, a 10X stock of drug was prepared
44 independently, and 2 μ L of drug was added to the 20 μ L hanging drop containing spheroids, to result in a final
45 concentration of 1X. Several drug-dosing regimens were carried out, including cisplatin in the range of 1-50 μ M
46 and ALDH inhibitor **13h** in the range of 0.03-30 μ M.

The effect of drug was assayed on spheroids 72 hours, using the alamarBlue assay to determine viability after drug treatment. Control untreated spheroids were maintained for the same duration in culture. Cell viability after drug treatment was normalized to untreated controls, and quantified. At least 20 spheroids (technical replicates) were assayed per experiment, with 5 to 8 biological replicates. Drug-treated spheroids were imaged using phase-contrast microscopy to observe morphologic differences in spheroids exposed to drug compared with control untreated spheroids.

Metabolic activity in hanging drop ovarian cancer spheroids: AlamarBlue dye (Life Technologies, Carlsbad CA) was added in a 1:10 dilution to 100 cells/drop spheroids. Following 4 hours of alamarblue addition and incubation, the 384 hanging drop array was placed in a fluorescence plate reader (Synergy HT, BioTek Instruments, Winooski, VT). Alamarblue fluorescence readings were obtained at 530 nm excitation and 590 nm emission. To quantify viability within spheroids, alamarblue readings of treated as well untreated spheroids were obtained at Day 10, and compared to the untreated Control spheroids.

Statistical analysis: Drug viability data were determined and quantified using the alamarBlue assay, as outlined previously.^{55, 57} Briefly, normalized viability was calculated by comparing the alamarBlue fluorescence of drug-treated spheroids to control untreated spheroids and expressed as a percentage. Statistical analysis was performed using one-way ANOVAs and levels of statistical significance are indicated in the figures. All data are expressed as mean \pm SEM and are an average of at least 5 to 8 independent experiments.

Metabolic Stability in Mouse Liver Microsomes: The metabolic stability was assessed using CD-1 mouse liver microsomes. 1 μ M of each compound was incubated with 0.5 mg/mL microsomes and 1.7 mM cofactor β -NADPH in 0.1 M phosphate buffer (pH = 7.4) containing 3.3 mM MgCl₂ at 37 °C. The DMSO concentration was less than 0.1% in the final incubation system. At 0, 5, 10, 15, 30, 45, and 60 min of incubation, 40 μ L of reaction mixture were taken out, and the reaction is quenched by adding 3-fold excess of cold acetonitrile

containing 100 ng/mL of internal standard for quantification. The collected fractions were centrifuged at 15000rpm for 10 min to collect the supernatant for LC–MS/ MS analysis, from which the amount of compound remaining was determined. The natural log of the amount of compound remaining was plotted against time to determine the disappearance rate and the half-life of tested compounds.

Pharmacokinetic Studies in Mice: All animal experiments in this study were approved by the University of Michigan Committee on Use and Care of Animals and Unit for Laboratory Animal Medicine (ULAM). The abbreviated pharmacokinetics of compounds **13g** and **13h** were determined in female CD-1 mice following intraperitoneal (ip) injection of 10 mg/kg respectively. Compounds were dissolved in the vehicle containing 20% DMSO, 50% PEG-400, and 30% PBS. Four blood samples (50 μ L) were collected over 7 h (at 0.5h, 2h, 4h, and 7h), centrifuged at 35 00 rpm for 10 min, and plasma was frozen at -80°C for later analysis. Plasma concentrations of the compounds were determined by the LC–MS/MS method developed and validated for this study. The LC–MS/MS method consisted of a Shimadzu HPLC system, and chromatographic separation of tested compound which was achieved using a Waters Xbridge-C18 column (5 cm \times 2.1 mm, 3.5 μ m). An AB Sciex QTrap 4500 mass spectrometer equipped with an electrospray ionization source (ABI-Sciex, Toronto, Canada) in the positive-ion multiple reaction monitoring (MRM) mode was used for detection. All pharmacokinetic parameters were calculated by noncompartmental methods using WinNonlin, version 3.2 (Pharsight Corporation, Mountain View, CA, USA).

Molecular Modeling. Molecular modeling was performed on a Dell Precision T7400n Mini-Tower, Quad Core Xeon Proc X5450 dual processor with 32 nodes computer.

Homology Modeling. Homology models for ALDH1A2 and 1A3 were built on Swiss-Model Workspace (SMW) using ALDH1A1 PDB (PDB code 5TEI) as a template.⁶⁸⁻⁶⁹ The homology modeling on SMW can be briefly described as alignment of a target sequence and a template sequence using the “automated mode” since the similarity between ALDH1A isoforms are approximately 70%. The target/template alignment along with 3D coordinates of the template were used as input for generating an all-atom model for the target sequence using

ProMod3, a comparative modelling engine. Side chains were remodeled using a backbone dependent rotamer library. Finally, the geometry of the resulting model was energy minimized by using the force field OpenMM.⁶⁸⁻⁶⁹

Global and per-residue quality of the model was assessed by the QMEAN scoring function, where several statistical potential terms, i.e., geometrical features of the model as well as each residue (pairwise atomic distances, torsion angles, solvent accessibility, etc.), are compared to statistical parameters obtained from experimental structures.^{68, 70} The local scores are linear combinations of the four statistical potential terms evaluated on a per residue basis. Each residue gets a score between 0 and 1, with 1 being the best. To assess the overall quality of the model, global QMEAN scores were calculated as a Z-score which compares the obtained values to scores calculated from a set of high-resolution X-ray structures. GMQE (Global Model Quality Estimation) is another global quality estimation which combines properties from the target-template alignment.⁷⁰ The resulting GMQE score is between 0 and 1 and expresses the accuracy of a model built with that alignment and template. The quality of the model increases as the number approaches 1. Additionally, the model quality was evaluated by a Ramachandran plot within the PROCHECK server.⁷¹ PROCHECK assesses the stereo-chemical quality of a protein structure. A good quality model would be expected to have over 90% in the most favored regions.⁷²

Molecular Docking. Molecular docking studies were performed using the HYBRID docking program from OpenEye Scientific, Santa Fe, NM against ALDH1A isoforms with co-crystal **7** (PDB code 5TEI) or **13g** (PDB code 6DUM) as the reference ligands.⁷³ Prior to docking, 500 different conformations were generated for each ligand using Omega (OpenEye Scientific, Santa Fe, NM), a systematic, knowledge-based conformer generator.⁷⁴ HYBRID performs a systematic, exhaustive, non-stochastic examination of poses within the protein active site. However, HYBRID reduces this search space based on shape and chemical complementarity to reference bound ligands. It treats ligand conformers as rigid during the docking process, although ligand flexibility is implicitly included by docking multiple conformers of each ligand. The input for HYBRID is a protein structure and a multi-conformer representation of the ligand to be docked. In the exhaustive search using

the Chemical Gaussian Overlay (CGO) scoring function, each ligand conformation is systematically rotated and translated within the active site at a resolution of 1 Å. Every pose that passes a bump check is scored.⁷³

Chemistry. All reagents were used in the condition received from commercial sources. ¹H NMR and ¹³C NMR were taken in CDCl₃ or DMSO-*d*₆ at room temperature on Varian Inova 400 or 500 MHz instruments. Reported chemical shifts are expressed in parts per million (ppm) on the δ scale from an internal standard of tetramethylsilane (0 ppm). Mass spectrometry data were obtained on either an Agilent TOF or Agilent Q-TOF. An Agilent 1100 series HPLC with an Agilent Zorbax Eclipse Plus–C18 column was used to determine purity of biologically tested compounds. All tested compounds were determined to be >95% pure using a 6 minute gradient of 10-90% acetonitrile in water followed by a 2 minute hold at 90% acetonitrile with detection at 254 nm. Flash chromatographic purifications were performed using a Teledyne ISCO Combiflash RF with Redisep Gold RF columns.

6-((3-Fluorobenzyl)thio)-5-(*o*-tolyl)-1H-pyrazolo[3,4-*d*]pyrimidin-4(5H)-one (7). To a flask charged with potassium carbonate (1.56 g, 11.3 mmol), **9a** (1.46 g, 5.7 mmol), and 10 mL DMF was added 3-fluorobenzyl bromide (0.69 mL, 5.7 mmol). After stirring under N₂ for 16 h at RT the reaction was neutralized with sat. aq. NH₄Cl and the mixture was diluted with water and extracted 2x with EtOAc. The combined organic portions were washed 3x with brine and then dried with sodium sulfate and the solvent removed. The crude was purified by flash (50% EtOAc in Hex) yielding the titled compound as a white solid (1.26g, 61% yield). HRMS (ESI): *m/z* 367.1022 [M+H]⁺. ¹H NMR (500 MHz, CDCl₃) δ 8.40 (br. s, 1H), 8.15 (s, 1H), 7.40 (t, *J* = 8.30 Hz, 1H), 7.34 (d, *J* = 7.83 Hz, 1H), 7.31 (t, *J* = 7.83 Hz, 1H), 7.21 (t, *J* = 7.80 Hz, 1H), 7.18 (d, *J* = 7.83 Hz, 1H),

7.07 (d, $J = 7.34$ Hz, 1H), 7.02 (d, $J = 9.29$ Hz, 1H), 6.90 (dt, $J = 1.96, 8.56$ Hz, 1H), 4.28 (d, $J = 13.69$ Hz, 1H), 4.31 (d, $J = 13.69$ Hz, 1H), 2.10 (s, 3H) ^{13}C NMR (126 MHz, CDCl_3) δ 162.59 (d, $J = 246.5$ Hz), 161.52, 157.71, 153.63, 138.25 (d, $J = 7.5$ Hz), 136.92, 135.62, 134.42, 131.40, 130.42, 130.01 (d, $J = 8.2$ Hz), 129.36, 127.37, 124.82 (d, $J = 3.2$ Hz), 116.08 (d, $J = 21.9$ Hz), 114.54 (d, $J = 21.1$ Hz), 102.86, 36.55, 17.28. HPLC Purity: 99%.

Method A: General Method for Synthesis of Pyrazolopyrimidinones 10a,b. A solution of the appropriate isothiocyanate (12.9 mmol), and ethyl 5-amino-1H-pyrazole-4-carboxylate (**8a**) (12.9 mmol) in 15 mL toluene was refluxed under N_2 for 3 h. The thiourea intermediate, which precipitated upon cooling to RT, was collected and added to 10 mL 1N NaOH and refluxed for 3 h. The product was precipitated by the addition of concentrated HCl and collected by filtration.

6-Mercapto-5-(o-tolyl)-1H-pyrazolo[3,4-d]pyrimidin-4(5H)-one (10a). Method A. White solid. 44% yield. ^1H NMR (400 MHz, $\text{DMSO}-d_6$) δ 13.77 (br. s., 1H), 13.41 (br. s., 1H), 8.57 (br. s., 1H), 7.19 - 7.31 (m, 3H), 7.09 (d, $J = 5.87$ Hz, 1H), 1.99 (s, 3H).

5-Phenyl-6-thioxo-6,7-dihydro-1H-pyrazolo[3,4-d]pyrimidin-4(5H)-one (10b). Method A. White solid. 64% yield. ^1H NMR (500 MHz, $\text{DMSO}-d_6$) δ 13.73 (s, 1H), 13.37 (s, 1H), 8.58 (s, 1H), 7.44 (t, $J = 7.6$ Hz, 2H), 7.37 (t, $J = 7.4$ Hz, 1H), 7.20 (d, $J = 7.7$ Hz, 2H).

6-((3-Fluorobenzyl)thio)-5-phenyl-1H-pyrazolo[3,4-d]pyrimidin-4(5H)-one (11). Starting from compound **9b** the titled compound was synthesized and purified in a similar manner to compound **7** and obtained as a white solid. 69% yield. HRMS (ESI): m/z 353.0867 $[\text{M}+\text{H}]^+$. ^1H NMR (400 MHz, CDCl_3) δ 12.54 (br. s., 1H), 8.08 (s, 1H), 7.47 (s, 3H), 7.30 (s, 2H), 7.14 - 7.22 (m, 1H), 7.06 (d, $J = 7.83$ Hz, 1H), 7.02 (d, $J = 9.39$ Hz, 1H), 6.89 (t, $J = 8.60$ Hz, 1H), 4.22 - 4.35 (m, 2H), ^{13}C NMR (101 MHz, CDCl_3) δ 162.46 (d, $J = 246.6$ Hz), 161.46, 158.34, 153.26, 138.12 (d, $J = 7.6$ Hz), 135.27, 135.13, 129.98, 129.91 (d, $J = 9.0$ Hz), 129.60, 129.27, 124.84 (d, $J = 2.9$ Hz), 116.07 (d, $J = 21.8$ Hz), 114.42 (d, $J = 21.1$ Hz), 102.73, 36.68. HPLC Purity: 99%.

Method B. General Method for Synthesis of N-alkylated Pyrazolopyrimidinones 12a-d, f-h, 13a-h. To a dry flask charged with **7** or **11** (0.27 mmol) and potassium carbonate (0.55 mmol) under N₂ was added 2 mL DMF and the appropriate alkyl halide or mesylate (0.34 mmol) by syringe. The mixture was heated to 50 °C for 16 h at which point starting material was consumed by HPLC. The mixture was diluted with ethyl acetate and washed with water and 3x with brine. The organic portion was dried over sodium sulfate and the solvent removed. The regioisomers were separated by flash (EtOAc in Hex gradient). The 1-alkyl pyrazoles (**12a-h**) eluted more quickly than the 2-alkyl pyrazoles (**13a-h**). The alkylating reagents used are designated below for each compound. All were commercially available except for oxetan-3-ylmethyl methanesulfonate which was prepared as previously described.⁷⁵

6-((3-Fluorobenzyl)thio)-1-methyl-5-(o-tolyl)-1H-pyrazolo[3,4-d]pyrimidin-4(5H)-one (12a). Method B.

Methyl iodide. White solid. 43% yield. HRMS (ESI): m/z 381.1179 [M+H]⁺ ¹H NMR (400 MHz, DMSO-*d*₆) δ 8.06 (s, 1H), 7.41 (dt, J = 1.20, 6.40 Hz, 2H), 7.31 - 7.38 (m, 2H), 7.23 - 7.31 (m, 3H), 7.06 (tt, J = 1.60, 8.60 Hz, 1H), 4.38 (d, J = 13.30 Hz, 1H), 4.43 (d, J = 13.30 Hz, 1H), 3.96 (s, 3H), 1.95 (s, 3H) ¹³C NMR (126 MHz, CDCl₃) δ 162.63 (d, J = 246.5 Hz), 161.21, 157.07, 151.01, 138.62 (d, J = 7.4 Hz), 136.93, 135.40, 134.49, 131.41, 130.40, 130.01 (d, J = 8.4 Hz), 129.35, 127.37, 124.67 (d, J = 2.9 Hz), 116.05 (d, J = 22.0 Hz), 114.54 (d, J = 21.0 Hz), 102.86, 36.56 (d, J = 2.0 Hz), 34.09, 17.29. HPLC Purity: 97%.

1-(Cyclopropylmethyl)-6-((3-fluorobenzyl)thio)-5-(o-tolyl)-1H-pyrazolo[3,4-d]pyrimidin-4(5H)-one (12b).

Method B. Cyclopropylmethyl bromide. Colorless oil. 32% yield. HRMS (ESI): m/z 421.1493 [M+H]⁺ ¹H NMR (500 MHz, CDCl₃) δ 8.05 (s, 1H), 7.42 (t, J = 7.80 Hz, 1H), 7.31 - 7.39 (m, 2H), 7.21 - 7.28 (m, 1H), 7.17 (d, J = 7.34 Hz, 1H), 7.12 (d, J = 7.83 Hz, 1H), 7.07 (d, J = 9.78 Hz, 1H), 6.94 (dt, J = 2.20, 8.44 Hz, 1H), 4.32 (d, J = 13.69 Hz, 1H), 4.29 (d, J = 14.18 Hz, 1H), 4.19 (d, J = 7.20 Hz, 2H), 2.12 (s, 3H), 1.32 - 1.44 (m, 1H), 0.62 (td, J = 5.50, 7.80 Hz, 2H), 0.44 (dt, J = 4.80, 5.50 Hz, 2H) ¹³C NMR (126 MHz, CDCl₃) δ 162.66 (d, J = 246.7 Hz), 160.99, 157.09, 150.50, 138.64 (d, J = 7.4 Hz), 136.96, 135.33, 134.53, 131.37, 130.36, 130.01 (d, J = 8.2

Hz), 129.34, 127.33, 124.45 (d, $J = 2.7$ Hz), 115.81 (d, $J = 22.1$ Hz), 114.47 (d, $J = 21.0$ Hz), 102.82, 52.05, 36.49 (d, $J = 1.9$ Hz), 17.33, 11.16, 3.97. HPLC Purity: 96%.

6-((3-Fluorobenzyl)thio)-1-(oxetan-3-yl)-5-(o-tolyl)-1H-pyrazolo[3,4-d]pyrimidin-4(5H)-one (12c). Method

B. 3-Bromooxetane. White solid. 18% yield. HRMS (ESI): m/z 423.1292 $[M+H]^+$ 1H NMR (500 MHz, $CDCl_3$) δ 8.14 (s, 1H), 7.41 - 7.46 (m, 1H), 7.32 - 7.39 (m, 2H), 7.24 - 7.29 (m, 1H), 7.11 - 7.17 (m, 2H), 7.06 - 7.10 (m, 1H), 6.95 (dt, $J = 2.20$, 8.44 Hz, 1H), 5.91 - 5.99 (m, 1H), 5.28 - 5.35 (m, 2H), 5.04 - 5.09 (m, 2H), 4.30 (d, $J = 13.69$ Hz, 1H), 4.34 (d, $J = 13.69$ Hz, 1H), 2.10 (s, 1H) ^{13}C NMR (126 MHz, $CDCl_3$) δ 162.71 (d, $J = 246.9$ Hz), 161.93, 156.91, 151.04, 138.31 (d, $J = 7.6$ Hz), 136.85, 136.37, 134.35, 131.51, 130.55, 130.10 (d, $J = 8.4$ Hz), 129.26, 127.47, 124.57 (d, $J = 2.9$ Hz), 115.92 (d, $J = 22.0$ Hz), 114.66 (d, $J = 21.1$ Hz), 103.38, 76.85, 50.69, 36.62, 17.32. HPLC Purity: 98%.

6-((3-Fluorobenzyl)thio)-1-(oxetan-3-ylmethyl)-5-(o-tolyl)-1H-pyrazolo[3,4-d]pyrimidin-4(5H)-one (12d).

Method B. Oxetan-3-ylmethyl methanesulfonate. White crystalline solid. 42% yield. HRMS (ESI): m/z 437.1449 $[M+H]^+$ 1H NMR (500 MHz, $CDCl_3$) δ 8.03 (s, 1H), 7.42 - 7.47 (m, 1H), 7.33 - 7.40 (m, 2H), 7.25 - 7.31 (m, 1H), 7.17 (d, $J = 7.34$ Hz, 1H), 7.14 (d, $J = 7.34$ Hz, 1H), 7.06 - 7.11 (m, 1H), 6.97 (dt, $J = 2.45$, 8.31 Hz, 1H), 4.86 (dt, $J = 1.47$, 7.09 Hz, 2H), 4.59 - 4.66 (m, 4H), 4.35 (d, $J = 13.69$ Hz, 1H), 4.31 (d, $J = 14.18$ Hz, 1H), 3.52 - 3.61 (m, 1H), 2.12 (s, 3H) ^{13}C NMR (126 MHz, $CDCl_3$) δ 162.68 (d, $J = 246.7$ Hz), 161.69, 156.89, 150.99, 138.43 (d, $J = 7.5$ Hz), 136.90, 135.82, 134.41, 131.44, 130.46, 130.08 (d, $J = 8.2$ Hz), 129.28, 127.40, 124.50 (d, $J = 2.9$ Hz), 115.86 (d, $J = 22.0$ Hz), 114.58 (d, $J = 21.3$ Hz), 102.85, 74.85, 74.77, 49.40, 36.64 (d, $J = 1.9$ Hz), 35.21, 17.32. HPLC Purity: 99%.

Method C. General Synthesis of substituted pyrazolothienopyrimidinones 12e, 15a-i from 14. To a dry flask under N₂ charged with **14** (0.24 mmol) and 2 mL dry DMF was added the appropriate amine (0.24 mmol) by syringe. The reaction was stirred at RT for 1hr and then cooled to 0°C. 60 wt.% NaH in mineral oil (0.24 mmol) was added and the flask was stirred at 0°C for 20min then allowed to warm to RT and stirred for 3 h. The flask was once again cooled to 0°C and 3-fluorobenzyl bromide (0.24 mmol) was added by syringe. The mixture was stirred at 0°C for 30 min at which point the reaction was complete by HPLC. The reaction was diluted with 10 mL water and extracted 2x with 10 mL EtOAc. The combined organic portion was washed 3x with brine, dried over sodium sulfate and the solvent removed. The crude product was purified by flash (0-100% EtOAc in Hexanes).

6-((3-Fluorobenzyl)thio)-1-methyl-5-phenyl-1H-pyrazolo[3,4-d]pyrimidin-4(5H)-one (12e). Method C.

White crystalline solid. 84 % yield. HRMS (ESI): m/z 367.1023 [M+H]⁺ ¹H NMR (500 MHz, CDCl₃) δ 8.03 (s, 1H), 7.47 - 7.58 (m, 3H), 7.22 - 7.30 (m, 3H), 7.13 (d, J = 7.83 Hz, 1H), 7.09 (d, J = 9.78 Hz, 1H), 6.95 (dt, J = 2.20, 8.44 Hz, 1H), 4.34 (s, 2H), 4.01 (s, 3H) ¹³C NMR (126 MHz, CDCl₃) δ 162.67 (d, J = 246.6 Hz), 161.31, 157.68, 150.89, 138.47 (d, J = 7.4 Hz), 135.50, 135.42, 130.11, 130.06 (d, J = 8.3 Hz), 129.75, 129.36, 124.76 (d, J = 3.1 Hz), 116.15 (d, J = 21.9 Hz), 114.61 (d, J = 21.0 Hz), 102.95, 36.88, 34.12. HPLC Purity: 98%.

1-(Cyclopropylmethyl)-6-((3-fluorobenzyl)thio)-5-phenyl-1H-pyrazolo[3,4-d]pyrimidin-4(5H)-one (12f).

Method B. Cyclopropylmethyl bromide. White Solid. 47.7 % yield. HRMS (ESI): m/z 407.1335 [M+H]⁺ ¹H NMR (400 MHz, CDCl₃) δ 8.05 (s, 1H), 7.48 - 7.57 (m, 3H), 7.20 - 7.33 (m, 3H), 7.12 (d, J = 7.83 Hz, 1H), 7.08 (d, J = 9.39 Hz, 1H), 6.95 (t, J = 8.41 Hz, 1H), 4.31 (s, 2H), 4.19 (d, J = 7.04 Hz, 2H), 1.38 (s, 1H), 0.54 - 0.69 (m, 2H), 0.36 - 0.50 (m, 2H) ¹³C NMR (101 MHz, CDCl₃) δ 162.69 (d, J = 246.7 Hz), 161.07, 157.71, 150.37, 138.46 (d, J = 7.6 Hz), 135.53, 135.35 (d, J = 3.7 Hz), 130.07, 130.05 (d, J = 8.1 Hz), 129.72, 129.35, 124.55 (d, J = 2.9 Hz), 115.92 (d, J = 21.9 Hz), 114.54 (d, J = 21.3 Hz), 102.91, 52.05, 36.82, 11.22, 3.98. HPLC Purity: 99%.

6-((3-Fluorobenzyl)thio)-1-(oxetan-3-yl)-5-phenyl-1H-pyrazolo[3,4-d]pyrimidin-4(5H)-one (12g). Method

B. 3-bromooxetane. White solid. 15.5 % yield. HRMS (ESI): m/z 409.1131 $[M+H]^+$ 1H NMR (500 MHz, $CDCl_3$) δ 8.13 (s, 1H), 7.50 - 7.57 (m, 3H), 7.21 - 7.31 (m, 3H), 7.12 (d, J = 7.83 Hz, 1H), 7.08 (d, J = 9.29 Hz, 1H), 6.92 - 6.99 (m, 1H), 5.94 (quin, J = 7.21 Hz, 1H), 5.30 (t, J = 6.36 Hz, 2H), 5.06 (t, J = 7.09 Hz, 2H), 4.33 (s, 2H) ^{13}C NMR (126 MHz, $CDCl_3$) δ 162.71 (d, J = 246.6 Hz), 161.98, 157.48, 150.90, 138.14 (d, J = 7.4 Hz), 136.33, 135.33, 130.22, 130.12 (d, J = 8.3 Hz), 129.82, 129.25, 124.64 (d, J = 2.9 Hz), 115.99 (d, J = 22.1 Hz), 114.69 (d, J = 21.1 Hz), 103.47, 76.81, 50.75, 36.91. HPLC Purity: 96%.

6-((3-Fluorobenzyl)thio)-1-(oxetan-3-ylmethyl)-5-phenyl-1H-pyrazolo[3,4-d]pyrimidin-4(5H)-one (12h).

Method B. Oxetan-3-ylmethyl methanesulfonate. White solid. 32.5 % yield. HRMS (ESI): m/z 423.1289 $[M+H]^+$ 1H NMR (500 MHz, $CDCl_3$) δ 8.00 (s, 1H), 7.48 - 7.56 (m, 3H), 7.23 - 7.31 (m, 3H), 7.14 (d, J = 7.83 Hz, 1H), 7.08 (d, J = 9.78 Hz, 1H), 6.92 - 6.98 (m, 1H), 4.83 (t, J = 7.09 Hz, 2H), 4.62 (d, J = 7.34 Hz, 2H), 4.60 (t, J = 6.10 Hz, 2H), 4.32 (s, 2H), 3.48 - 3.59 (m, 1H) ^{13}C NMR (126 MHz, $CDCl_3$) δ 162.59 (d, J = 246.6 Hz), 161.67, 157.39, 150.77, 138.22 (d, J = 7.6 Hz), 135.68, 135.34, 130.05, 130.2 (d, J = 7.6) 129.99, 129.67, 129.21, 124.51 (d, J = 3.0 Hz), 115.84 (d, J = 22.0 Hz), 114.52 (d, J = 21.0 Hz), 102.84, 74.67, 49.29, 36.85, 35.15. HPLC Purity: 99%.

6-((3-Fluorobenzyl)thio)-2-methyl-5-(o-tolyl)-2H-pyrazolo[3,4-d]pyrimidin-4(5H)-one (13a). Method B.

Methyl iodide. Colorless Oil. 27% yield. HRMS (ESI): m/z 381.1179 $[M+H]^+$ 1H NMR (500 MHz, $CDCl_3$) δ 8.03 (s, 1H), 7.40 (t, J = 7.58 Hz, 1H), 7.29 - 7.36 (m, 2H), 7.19 - 7.25 (m, 1H), 7.17 (d, J = 7.83 Hz, 1H), 7.13 (d, J = 7.83 Hz, 1H), 7.07 (d, J = 9.78 Hz, 1H), 6.91 (dt, J = 2.00, 8.30 Hz, 1H), 4.33 - 4.42 (m, 2H), 4.07 (s, 3H), 2.10 (s, 3H) ^{13}C NMR (126 MHz, $CDCl_3$) δ 162.61 (d, J = 246.1 Hz), 159.88, 158.40, 157.99, 138.73 (d, J = 7.4 Hz), 137.12, 134.53, 131.25, 130.26, 129.89 (d, J = 8.5 Hz), 129.59, 129.31, 127.20, 124.93 (d, J = 2.9

Hz), 116.09 (d, $J = 21.6$ Hz), 114.34 (d, $J = 21.1$ Hz), 104.89, 40.29, 36.60 (d, $J = 2.1$ Hz), 17.29. HPLC Purity: 99%.

2-(Cyclopropylmethyl)-6-((3-fluorobenzyl)thio)-5-(o-tolyl)-2H-pyrazolo[3,4-d]pyrimidin-4(5H)-one (13b).

Method B. Cyclopropylmethyl bromide. White Crystalline solid. 38% yield. HRMS (ESI): m/z 421.1492

$[M+H]^+$ 1H NMR (500 MHz, $CDCl_3$) δ 8.21 (s, 1H), 7.40 (t, $J = 7.34$ Hz, 1H), 7.28 - 7.36 (m, 2H), 7.19 - 7.25 (m, 1H), 7.17 (d, $J = 7.83$ Hz, 1H), 7.12 (d, $J = 7.83$ Hz, 1H), 7.06 (d, $J = 9.78$ Hz, 1H), 6.91 (t, $J = 8.31$ Hz, 1H), 4.41 (d, $J = 14.18$ Hz, 1H), 4.38 (d, $J = 14.20$ Hz, 1H), 4.13 (d, $J = 6.85$ Hz, 2H), 2.12 (s, 3H), 1.36 - 1.47 (m, 1H), 0.69 - 0.78 (m, 2H), 0.42 - 0.49 (m, 2H) ^{13}C NMR (126 MHz, $CDCl_3$) δ 162.58 (d, $J = 246.2$ Hz), 159.74, 158.16, 158.10, 138.60 (d, $J = 7.3$ Hz), 137.13, 134.55, 131.22, 130.21, 129.87 (d, $J = 8.4$ Hz), 129.58, 127.85, 127.17, 124.90 (d, $J = 3.1$ Hz), 116.08 (d, $J = 21.9$ Hz), 114.32 (d, $J = 21.2$ Hz), 104.54, 58.20, 36.64, 17.30, 10.71, 4.19. HPLC Purity: 97%.

6-((3-Fluorobenzyl)thio)-2-(oxetan-3-yl)-5-(o-tolyl)-2H-pyrazolo[3,4-d]pyrimidin-4(5H)-one (13c).

Method B. 3-Bromooxetane. White solid. 15% yield. HRMS (ESI): m/z 423.1295 $[M+H]^+$ 1H NMR (500 MHz, $CDCl_3$) δ 8.21 (s, 1H), 7.39 - 7.45 (m, 1H), 7.30 - 7.37 (m, 2H), 7.23 (dt, $J = 5.87, 7.83$ Hz, 1H), 7.15 - 7.19 (m, 1H), 7.12 (d, $J = 7.83$ Hz, 1H), 7.04 - 7.09 (m, 1H), 6.92 (dt, $J = 1.96, 8.56$ Hz, 1H), 5.53 - 5.62 (m, 1H), 5.23 (t, $J = 6.60$ Hz, 2H), 5.10 (t, $J = 7.34$ Hz, 2H), 4.38 - 4.46 (m, 2H), 2.11 (s, 3H) ^{13}C NMR (126 MHz, $CDCl_3$) δ 162.70 (d, $J = 246.7$ Hz), 160.89, 158.58, 157.91, 138.34 (d, $J = 7.8$ Hz), 137.11, 134.40, 131.36, 130.41, 130.00 (d, $J = 8.2$ Hz), 129.58, 128.09, 127.31, 124.97 (d, $J = 3.2$ Hz), 116.18 (d, $J = 22.2$ Hz), 114.51 (d, $J = 21.0$ Hz), 105.25, 76.81 (d, $J = 2.7$ Hz), 56.83, 36.87, 17.34. HPLC Purity: 96%.

6-((3-Fluorobenzyl)thio)-2-(oxetan-3-ylmethyl)-5-(o-tolyl)-2H-pyrazolo[3,4-d]pyrimidin-4(5H)-one (13d).

Method B. Oxetan-3-ylmethyl methanesulfonate. Colorless oil. 24.3 % yield. HRMS (ESI): m/z 437.1449

$[M+H]^+$ 1H NMR (500 MHz, $CDCl_3$) δ 8.07 (s, 1H), 7.38 - 7.44 (m, 1H), 7.29 - 7.37 (m, 2H), 7.22 (dt, J = 6.11, 7.95 Hz, 1H), 7.16 (d, J = 7.34 Hz, 1H), 7.10 (d, J = 7.83 Hz, 1H), 7.05 (dd, J = 1.96, 9.78 Hz, 1H), 6.91 (dt, J = 2.45, 8.31 Hz, 1H), 4.88 (t, J = 7.09 Hz, 2H), 4.59 (d, J = 7.83 Hz, 2H), 4.55 (t, J = 6.36 Hz, 2H), 4.35 - 4.43 (m, 2H), 3.62 - 3.71 (m, 1H), 2.11 (s, 3H) ^{13}C NMR (126 MHz, $CDCl_3$) δ 162.66 (d, J = 246.2 Hz), 160.42, 158.56, 157.96, 138.42 (d, J = 7.7 Hz), 137.13, 134.45, 131.32, 130.36, 129.96 (d, J = 8.3 Hz), 129.57, 128.70, 127.28, 124.95 (d, J = 2.6 Hz), 116.18 (d, J = 21.9 Hz), 114.45 (d, J = 21.1 Hz), 104.89, 74.48 (d, J = 2.7 Hz), 55.85, 36.79, 35.36, 17.35. HPLC Purity: 99%.

6-((3-Fluorobenzyl)thio)-2-methyl-5-phenyl-2H-pyrazolo[3,4-d]pyrimidin-4(5H)-one (13e). Method B.

Methyl Iodide. White solid. 24.0 % yield. HRMS (ESI): m/z 367.1021 $[M+H]^+$ 1H NMR (500 MHz, $CDCl_3$) δ 8.02 (s, 1H), 7.46 - 7.56 (m, 3H), 7.26 - 7.31 (m, 2H), 7.23 (q, J = 7.34 Hz, 1H), 7.14 (d, J = 7.83 Hz, 1H), 7.08 (d, J = 9.29 Hz, 1H), 6.92 (t, J = 8.07 Hz, 1H), 4.39 (s, 2H), 4.07 (s, 3H) ^{13}C NMR (126 MHz, $CDCl_3$) δ 162.64 (d, J = 246.3 Hz), 159.88, 158.52, 158.23, 138.61 (d, J = 7.6 Hz), 135.54, 129.91 (d, J = 8.3 Hz), 129.91, 129.57, 129.54, 129.25, 124.98 (d, J = 3.2 Hz), 116.17 (d, J = 21.9 Hz), 114.38 (d, J = 21.3 Hz), 104.95, 40.28, 36.90. HPLC Purity: 96%.

2-(Cyclopropylmethyl)-6-((3-fluorobenzyl)thio)-5-phenyl-2H-pyrazolo[3,4-d]pyrimidin-4(5H)-one (13f).

Method B. Cyclopropylmethyl bromide. White Solid. 36.8 % yield. HRMS (ESI): m/z 407.1334 $[M+H]^+$ 1H NMR (400 MHz, $CDCl_3$) δ 8.19 (s, 1H), 7.42 - 7.58 (m, 3H), 7.27 (d, J = 4.30 Hz, 2H), 7.16 - 7.24 (m, 1H), 7.11 (d, J = 7.43 Hz, 1H), 7.06 (d, J = 9.78 Hz, 1H), 6.90 (t, J = 8.41 Hz, 1H), 4.39 (s, 2H), 4.12 (d, J = 7.04 Hz, 2H), 1.34 - 1.49 (m, 1H), 0.72 (d, J = 7.83 Hz, 2H), 0.44 (d, J = 4.30 Hz, 2H) ^{13}C NMR (101 MHz, $CDCl_3$) δ 162.7, 159.8, 158.8, 158.0, 138.5, 135.6, 130.0, 129.9, 129.6, 129.6, 127.9, 125.0, 116.2, 114.4, 104.7, 58.3, 37.0, 10.5, 4.3. HPLC Purity: 99%.

6-((3-Fluorobenzyl)thio)-2-(oxetan-3-yl)-5-phenyl-2H-pyrazolo[3,4-d]pyrimidin-4(5H)-one (13g).

Method B. 3-bromooxetane. White solid. 21.6 % yield. HRMS (ESI): m/z 409.1130 $[M+H]^+$ 1H NMR (500 MHz, $CDCl_3$) δ 8.20 (s, 1H), 7.46 - 7.54 (m, 3H), 7.26 - 7.31 (m, 2H), 7.19 - 7.25 (m, 1H), 7.12 (d, J = 7.34 Hz, 1H), 7.06 (d, J = 9.78 Hz, 1H), 6.92 (dt, J = 1.71, 8.44 Hz, 1H), 5.56 (quin, J = 6.97 Hz, 1H), 5.21 (t, J = 6.60 Hz, 2H), 5.07 (t, J = 7.34 Hz, 2H), 4.42 (s, 2H) ^{13}C NMR (126 MHz, $CDCl_3$) δ 162.71 (d, J = 246.3 Hz), 160.83, 158.50, 158.42, 138.22 (d, J = 7.4 Hz), 135.42, 130.09, 130.02 (d, J = 6.8 Hz), 129.68, 129.58, 128.18, 125.05 (d, J = 3.0 Hz), 116.26 (d, J = 21.9 Hz), 114.55 (d, J = 21.1 Hz), 105.26, 76.82, 56.81, 37.17. HPLC Purity: 96%.

6-((3-Fluorobenzyl)thio)-2-(oxetan-3-ylmethyl)-5-phenyl-2H-pyrazolo[3,4-d]pyrimidin-4(5H)-one (13h).

Method B. Oxetan-3-ylmethyl methanesulfonate. White solid. 22.5 % yield. HRMS (ESI): m/z 423.1286 $[M+H]^+$ 1H NMR (500 MHz, $CDCl_3$) δ 8.07 (s, 1H), 7.47 - 7.54 (m, 3H), 7.25 - 7.30 (m, 2H), 7.19 - 7.25 (m, 1H), 7.11 (d, J = 7.34 Hz, 1H), 7.05 (d, J = 9.29 Hz, 1H), 6.92 (dt, J = 1.47, 8.31 Hz, 1H), 4.86 (t, J = 7.09 Hz, 2H), 4.57 (d, J = 7.34 Hz, 2H), 4.54 (t, J = 6.11 Hz, 2H), 4.38 (s, 2H), 3.58 - 3.70 (m, 1H) ^{13}C NMR (126 MHz, $CDCl_3$) δ 162.63 (d, J = 246.5 Hz), 160.34, 158.48, 158.36, 138.26 (d, J = 7.5 Hz), 135.42, 129.98, 129.95 (d, J = 7.8 Hz), 129.59, 129.52, 128.68, 124.98 (d, J = 2.9 Hz), 116.21 (d, J = 21.9 Hz), 114.45 (d, J = 21.0 Hz), 104.90, 74.41, 55.76, 37.03, 35.31. HPLC Purity: 99%.

Ethyl 5-isothiocyanato-1-methyl-1H-pyrazole-4-carboxylate (14). To a dry flask under N_2 at $0^\circ C$ charged with 60 wt.% NaH in mineral oil (296 mg, 7.39 mmol) and **8b** (500 mg, 2.96 mmol) was added 10 mL THF. The mixture was stirred for 10 min at which point CS_2 (1.8 mL, 29.6 mmol) was added by syringe. The mixture was allowed warm to room temperature then heated to $40^\circ C$ and stirred for 3 h. After cooling the flask to $0^\circ C$, iodine was added portion-wise over 10 min. The mixture was stirred for 1 h at $0^\circ C$ then 30 mL diethyl ether was added and the precipitate was filtered off. The filtrate was washed 3x with 1N HCl, 1x with brine and the organic portion was dried over sodium sulfate and the solvent removed yielding a reddish black solid. The

crude product was purified by flash (0-30% EA in Hex) yielding the titled compound as a yellow solid (460 mg, 2.18 mmol, 74% yield). MS (ESI): m/z 212.0 $[M+H]^+$ 1H NMR (400 MHz, $CDCl_3$) δ 7.81 (s, 1H), 4.25 - 4.44 (m, 2H), 3.80 (s, 3H), 1.30 - 1.44 (m, 3H).

5-(2-Chlorophenyl)-6-((3-fluorobenzyl)thio)-1-methyl-1H-pyrazolo[3,4-d]pyrimidin-4(5H)-one (15a).

Method C. White crystalline solid. 83% yield. HRMS (ESI): m/z 401.0629 $[M+H]^+$ 1H NMR (500 MHz, $CDCl_3$) δ 8.04 (s, 1H), 7.58 (dd, J = 1.47, 7.83 Hz, 1H), 7.48 (dt, J = 1.71, 7.70 Hz, 1H), 7.43 (dt, J = 1.47, 7.58 Hz, 1H), 7.33 (d, J = 7.83 Hz, 1H), 7.23 - 7.30 (m, 1H), 7.15 (d, J = 7.34 Hz, 1H), 7.10 (d, J = 9.78 Hz, 1H), 6.95 (dt, J = 1.96, 8.31 Hz, 1H), 4.32 - 4.42 (m, 2H), 4.01 (s, 3H) ^{13}C NMR (126 MHz, $CDCl_3$) δ 162.67 (d, J = 246.8 Hz), 160.82, 156.77, 150.91, 138.29 (d, J = 7.3 Hz), 135.54, 133.78, 133.22, 131.56, 131.21, 130.73, 130.05 (d, J = 8.5 Hz), 128.07, 124.69 (d, J = 2.9 Hz), 116.07 (d, J = 22.1 Hz), 114.63 (d, J = 21.0 Hz), 102.72, 36.59, 34.15. HPLC Purity: 99%.

5-(3-Chlorophenyl)-6-((3-fluorobenzyl)thio)-1-methyl-1H-pyrazolo[3,4-d]pyrimidin-4(5H)-one (15b).

Method C. White crystalline solid. 44% yield. HRMS (ESI): m/z 401.0629 $[M+H]^+$ 1H NMR (500 MHz, $CDCl_3$) δ 8.03 (s, 1H), 7.51 (td, J = 1.60, 8.00 Hz, 1H), 7.47 (t, J = 8.00 Hz, 1H), 7.26 - 7.32 (m, 2H), 7.18 (td, J = 1.53, 7.70 Hz, 1H), 7.15 (d, J = 7.83 Hz, 1H), 7.11 (td, J = 2.08, 9.54 Hz, 1H), 6.98 (dt, J = 2.69, 8.44 Hz, 1H), 4.32 - 4.41 (m, 2H), 4.02 (s, 3H) ^{13}C NMR (126 MHz, $CDCl_3$) δ 162.70 (d, J = 246.8 Hz), 160.84, 157.42, 150.77, 138.20 (d, J = 7.6 Hz), 136.53, 135.47, 135.27, 130.66, 130.47, 130.15 (d, J = 8.1 Hz), 129.77, 127.77, 124.78 (d, J = 3.2 Hz), 116.19 (d, J = 21.7 Hz), 114.74 (d, J = 21.0 Hz), 102.80, 36.93, 34.18. HPLC Purity: 98%.

5-(4-Chlorophenyl)-6-((3-fluorobenzyl)thio)-1-methyl-1H-pyrazolo[3,4-d]pyrimidin-4(5H)-one (15c).

Method C. White crystalline solid. 44% yield. HRMS (ESI): m/z 401.0629 $[M+H]^+$ 1H NMR (500 MHz, $CDCl_3$) δ 8.02 (s, 1H), 7.49 (d, J = 8.31 Hz, 2H), 7.24 - 7.30 (m, 1H), 7.20 (d, J = 8.31 Hz, 2H), 7.13 (d, J = 7.34 Hz, 1H), 7.09 (d, J = 9.78 Hz, 1H), 6.96 (dt, J = 2.45, 8.31 Hz, 1H), 4.34 (s, 2H), 4.01 (s, 3H) ^{13}C NMR (126 MHz, $CDCl_3$) δ 162.69 (d, J = 246.7 Hz), 160.96, 157.53, 150.81, 138.22 (d, J = 7.6 Hz), 136.33, 135.44, 133.89, 130.75, 130.17, 130.11, 124.76 (d, J = 2.9 Hz), 116.16 (d, J = 22.1 Hz), 114.73 (d, J = 21.0 Hz), 102.81, 36.92, 34.16. HPLC Purity: 99%.

6-((3-Fluorobenzyl)thio)-5-(2-fluorophenyl)-1-methyl-1H-pyrazolo[3,4-d]pyrimidin-4(5H)-one (15d).

Method C. White crystalline solid. 70% yield. HRMS (ESI): m/z 385.0932 $[M+H]^+$ 1H NMR (500 MHz, $CDCl_3$) δ 8.03 (s, 1H), 7.57 - 7.49 (m, 1H), 7.36 - 7.20 (m, 4H), 7.14 (d, J = 7.6 Hz, 1H), 7.10 (d, J = 9.5 Hz, 1H), 6.96 (td, J = 8.4, 2.5 Hz, 1H), 4.40 (d, J = 13.7 Hz, 1H), 4.34 (d, J = 13.6 Hz, 1H), 4.01 (s, 3H). ^{13}C NMR (126 MHz, $CDCl_3$) δ 162.70 (d, J = 247.0 Hz), 161.09, 158.28 (d, J = 253.4 Hz), 156.94, 150.92, 138.20 (d, J = 7.6 Hz), 135.52, 132.33 (d, J = 8.0 Hz), 131.24, 130.12 (d, J = 8.5 Hz), 125.05 (d, J = 3.9 Hz), 124.75 (d, J = 3.1 Hz), 123.11 (d, J = 14.1 Hz), 117.03 (d, J = 19.5 Hz), 116.15 (d, J = 22.2 Hz), 114.71 (d, J = 21.0 Hz), 102.69, 36.73, 34.18. HPLC Purity: 98%.

6-((3-Fluorobenzyl)thio)-5-(2-methoxyphenyl)-1-methyl-1H-pyrazolo[3,4-d]pyrimidin-4(5H)-one (15e).

Method C. White crystalline solid. 19% yield. HRMS (ESI): m/z 397.1127 $[M+H]^+$ (400 MHz, $CDCl_3$) δ 8.02 (s, 1H), 7.49 (t, J = 8.02 Hz, 1H), 7.22 - 7.29 (m, 1H), 7.19 (d, J = 7.83 Hz, 1H), 7.02 - 7.16 (m, 4H), 6.94 (t, J = 8.22 Hz, 1H), 4.33 (s, 2H), 3.99 (s, 3H), 3.78 (s, 3H) ^{13}C NMR (101 MHz, $CDCl_3$) δ 162.64 (d, J = 246.3 Hz), 161.76, 157.31, 155.40, 151.04, 138.76 (d, J = 7.6 Hz), 135.39, 131.80, 130.64, 129.92 (d, J = 8.4 Hz), 124.70 (d, J = 2.9 Hz), 123.89, 121.08, 116.00 (d, J = 21.9 Hz), 114.44 (d, J = 21.0 Hz), 112.34, 102.95, 55.82, 36.48, 34.06. HPLC Purity: 99%.

6-((3-Fluorobenzyl)thio)-5-(3-methoxyphenyl)-1-methyl-1H-pyrazolo[3,4-d]pyrimidin-4(5H)-one (15f).

Method C. White Solid. 80% yield. HRMS (ESI): m/z 397.1125 $[M+H]^+$ 1H NMR (400 MHz, $CDCl_3$) δ 7.99 (s, 1H), 7.41 (t, $J = 8.22$ Hz, 1H), 7.21 - 7.30 (m, 1H), 7.07 - 7.17 (m, 2H), 7.04 (dd, $J = 2.35, 8.22$ Hz, 1H), 6.90 - 6.98 (m, 1H), 6.85 (dd, $J = 0.78, 7.83$ Hz, 1H), 6.80 (d, $J = 1.96$ Hz, 1H), 4.33 (s, 2H), 3.99 (s, 3H), 3.80 (s, 3H) ^{13}C NMR (101 MHz, $CDCl_3$) δ 162.55 (d, $J = 246.6$ Hz), 161.20, 160.39, 157.50, 150.73, 138.41 (d, $J = 7.5$ Hz), 136.38, 135.24, 130.29, 129.97 (d, $J = 8.3$ Hz), 124.72 (d, $J = 3.0$ Hz), 121.31, 116.06 (d, $J = 21.8$ Hz), 115.82, 114.83, 114.48 (d, $J = 21.1$ Hz), 102.79, 55.39, 36.74, 34.04. HPLC Purity: 97%.

6-((3-Fluorobenzyl)thio)-5-(4-methoxyphenyl)-1-methyl-1H-pyrazolo[3,4-d]pyrimidin-4(5H)-one (15g).

Method C. White needles. 47% yield. HRMS (ESI): m/z 397.1123 $[M+H]^+$ 1H NMR (400 MHz, $CDCl_3$) δ 8.01 (s, 1H), 7.22 - 7.30 (m, 1H), 7.07 - 7.19 (m, 4H), 6.98 - 7.04 (m, 2H), 6.95 (dt, $J = 2.35, 8.41$ Hz, 1H), 4.32 (s, 2H), 4.00 (s, 3H), 3.85 (s, 3H) ^{13}C NMR (101 MHz, $CDCl_3$) δ 162.64 (d, $J = 246.4$ Hz), 161.92, 160.63, 157.91, 150.86, 138.52 (d, $J = 7.4$ Hz), 135.38, 130.40, 130.00, 127.75, 124.76 (d, $J = 2.7$ Hz), 116.16 (d, $J = 22.6$ Hz), 114.96, 114.56 (d, $J = 21.0$ Hz), 102.91, 55.45, 36.93, 34.14. HPLC Purity: 96%.

6-((3-Fluorobenzyl)thio)-1-methyl-5-(pyridin-3-yl)-1H-pyrazolo[3,4-d]pyrimidin-4(5H)-one (15h).

Method C. White solid. 64 % yield. HRMS (ESI): m/z 368.0972 $[M+H]^+$ (500 MHz, $CDCl_3$) δ 8.72 (d, $J = 4.40$ Hz, 1H), 8.52 (s, 1H), 7.97 (s, 1H), 7.63 (d, $J = 8.31$ Hz, 1H), 7.45 (dd, $J = 4.89, 7.83$ Hz, 1H), 7.21 - 7.30 (m, 1H), 7.12 (d, $J = 7.34$ Hz, 1H), 7.07 (d, $J = 9.78$ Hz, 1H), 6.94 (t, $J = 8.30$ Hz, 1H), 4.37 (d, $J = 14.18$ Hz, 1H), 4.33 (d, $J = 14.18$ Hz, 1H), 4.00 (s, 3H) ^{13}C NMR (126 MHz, $CDCl_3$) δ 162.54 (d, $J = 246.9$ Hz), 160.65, 157.29, 150.83, 150.64, 150.08, 137.96 (d, $J = 7.6$ Hz), 137.13, 135.25, 132.31, 130.05 (d, $J = 8.2$ Hz), 124.66 (d, $J = 3.2$ Hz), 124.07, 116.02 (d, $J = 21.9$ Hz), 114.64 (d, $J = 21.0$ Hz), 102.54, 36.80, 34.09. HPLC Purity: 99%.

6-((3-Fluorobenzyl)thio)-1-methyl-5-(pyridin-4-yl)-1H-pyrazolo[3,4-d]pyrimidin-4(5H)-one (15i).

Method C. Off white solid. 62% yield. HRMS (ESI): m/z 368.0974 $[M+H]^+$ 1H NMR (500 MHz, $CDCl_3$) δ 8.82 (d, J = 4.89 Hz, 2H), 8.00 (s, 1H), 7.26 - 7.32 (m, 1H), 7.25 (d, J = 5.38 Hz, 2H), 7.13 (d, J = 7.83 Hz, 1H), 7.09 (d, J = 9.78 Hz, 1H), 6.96 (dt, J = 2.45, 8.31 Hz, 1H), 4.37 (s, 2H), 4.01 (s, 3H) ^{13}C NMR (101 MHz, $CDCl_3$) δ 162.48 (d, J = 246.8 Hz), 162.30, 159.50, 156.74, 151.49, 150.51, 143.30, 137.86 (d, J = 7.5 Hz), 135.19, 130.03 (d, J = 8.3 Hz), 124.62 (d, J = 3.0 Hz), 124.20, 115.96 (d, J = 22.1 Hz), 114.63 (d, J = 21.0 Hz), 102.45, 36.28, 34.06 (d, J = 4.9 Hz). HPLC Purity: 99%.

Method D. General Synthesis of substituted pyrazolothiopyrimidinones 15j-l from 14. To a dry flask under

N_2 charged with **14** (0.24 mmol) and 2 mL dry DMF was added the appropriate amine (0.24 mmol) by syringe. The reaction was stirred at RT for 1 h and then cooled to 0°C. 60 wt. % NaH in mineral oil (0.71 mmol) was added and the flask was stirred at 0°C for 20 min then allowed to warm to RT and stirred for 3 h. The reaction was quenched with sat. aq. NH_4Cl and extracted 2x with ethyl acetate. The combined organics were dried with sodium sulfate and the solvent removed. The residue was dissolved in 2 mL DMF and 3-fluorobenzyl bromide (0.03 mL, 0.24 mmol), sodium bicarbonate (80 mg, 0.95 mmol) were added. The mixture was stirred at RT overnight at which point the reaction was complete by HPLC. The mixture was diluted with water and extracted 2x with EtOAc. The combined organics were washed 3x with brine, dried over sodium sulfate, and the solvent removed. The crude product was purified by flash chromatography (0-100% EtOAc in Hex) yielding the titled compounds.

6-((3-Fluorobenzyl)thio)-1-methyl-5-(pyridin-2-yl)-1H-pyrazolo[3,4-d]pyrimidin-4(5H)-one (15j).

Method D. White needles. 40% yield. HRMS (ESI): m/z 368.0977 $[M+H]^+$ 1H NMR (500 MHz, $CDCl_3$) δ 8.69 (dd, J = 1.47, 4.89 Hz, 1H), 8.03 (s, 1H), 7.92 (dt, J = 1.96, 7.58 Hz, 1H), 7.44 - 7.49 (m, 1H), 7.38 (d, J = 7.83 Hz, 1H), 7.21 - 7.29 (m, 1H), 7.13 (d, J = 7.83 Hz, 1H), 7.06 - 7.11 (m, 1H), 6.95 (dt, J = 2.20, 8.44 Hz, 1H), 4.38 (s, 2H), 4.01 (s, 3H) ^{13}C NMR (126 MHz, $CDCl_3$) δ 162.70 (d, J = 246.7 Hz), 160.19, 157.59, 150.88,

150.26, 149.38, 138.83, 138.17 (d, $J = 7.6$ Hz), 135.52, 130.10 (d, $J = 8.5$ Hz), 125.06, 124.86, 124.81 (d, $J = 3.1$ Hz), 116.19 (d, $J = 22.0$ Hz), 114.70 (d, $J = 21.4$ Hz), 102.96, 36.66, 34.18. HPLC Purity: 98%.

5-Benzyl-6-((3-fluorobenzyl)thio)-1-methyl-1H-pyrazolo[3,4-d]pyrimidin-4(5H)-one (15k).

Method D. White crystalline solid. 57% yield. HRMS (ESI): m/z 381.1180 $[M+H]^+$ 1H NMR (500 MHz, $CDCl_3$) δ 8.02 (s, 1H), 7.22 - 7.35 (m, 6H), 7.16 (d, $J = 7.83$ Hz, 1H), 7.11 (d, $J = 9.78$ Hz, 1H), 6.97 (t, $J = 8.31$ Hz, 1H), 5.36 (br. s., 2H), 4.43 (s, 2H), 3.96 (s, 3H) ^{13}C NMR (126 MHz, $CDCl_3$) δ 162.69 (d, $J = 246.9$ Hz), 160.36, 157.77, 150.44, 138.33 (d, $J = 7.5$ Hz), 135.33, 135.20, 130.09 (d, $J = 8.3$ Hz), 128.57, 127.67, 127.28, 124.70 (d, $J = 3.1$ Hz), 116.09 (d, $J = 22.0$ Hz), 114.70 (d, $J = 21.0$ Hz), 102.58, 46.60, 36.51, 33.97. HPLC Purity: 99%.

6-((3-Fluorobenzyl)thio)-1-methyl-5-phenethyl-1H-pyrazolo[3,4-d]pyrimidin-4(5H)-one (15l). Method D.

White Needles. 72% yield. HRMS (ESI): m/z 395.1341 $[M+H]^+$ 1H NMR (500 MHz, $CDCl_3$) δ 8.00 (s, 1H), 7.27 - 7.36 (m, 5H), 7.23 (t, $J = 7.58$ Hz, 2H), 7.17 (d, $J = 9.78$ Hz, 1H), 7.00 (dt, $J = 2.20, 8.44$ Hz, 1H), 4.48 (s, 2H), 4.24 - 4.31 (m, 2H), 3.96 (s, 3H), 2.97 - 3.04 (m, 2H) ^{13}C NMR (126 MHz, $CDCl_3$) δ 162.76 (d, $J = 246.8$ Hz), 159.65, 157.37, 150.47, 138.42 (d, $J = 7.6$ Hz), 137.64, 135.00, 130.18 (d, $J = 8.3$ Hz), 128.90, 128.65, 126.81, 124.76 (d, $J = 2.9$ Hz), 116.19 (d, $J = 22.0$ Hz), 114.78 (d, $J = 21.2$ Hz), 102.75, 45.68, 36.34, 34.23, 33.98. HPLC Purity: 99%.

6-((3-Fluorobenzyl)thio)-1,5-dimethyl-1H-pyrazolo[3,4-d]pyrimidin-4(5H)-one (15m). Compound 14

(100mg, 0.47 mmol) was dissolved in 1 mL 8N methylamine in ethanol and stirred at RT for 1 h. The volatiles were removed and the residue was dissolved in 1 mL DMF to which sodium bicarbonate (80 mg, 0.947 mmol) and 3-fluorobenzyl bromide (70 μ l, 0.57 mmol) were added. The reaction was stirred for 1 h at which point the product was precipitated out by the addition of water. The precipitate was collected by filtration, washed with

water and then hexanes. The precipitate was then taken up in dichloromethane and dried with sodium sulfate. The solvent was removed to yield the titled compound as a white crystalline solid (122mg, 0.40 mmol, 85 % yield). HRMS (ESI): m/z 305.0864 $[M+H]^+$ 1H NMR (500 MHz, $CDCl_3$) δ 7.99 (s, 1H), 7.29 - 7.35 (m, 1H), 7.24 (d, J = 7.83 Hz, 1H), 7.19 (d, J = 9.78 Hz, 1H), 7.00 (dt, J = 2.45, 8.56 Hz, 1H), 4.49 (s, 2H), 3.96 (s, 3H), 3.55 (s, 3H) ^{13}C NMR (126 MHz, $CDCl_3$) δ 162.74 (d, J = 246.7 Hz), 160.32, 157.62, 150.46, 138.42 (d, J = 7.5 Hz), 134.95, 130.17 (d, J = 8.2 Hz), 124.75 (d, J = 2.9 Hz), 116.17 (d, J = 22.0 Hz), 114.77 (d, J = 21.0 Hz), 102.44, 36.28, 33.95, 29.70. HPLC Purity: 99%.

ANCILLARY INFORMATION

Supporting Information:

Additional information regarding the reversible inhibition assay, inhibition of the N121S mutant used for crystallography, crystallographic data collection and refinement, electron density maps, validation of ALDH1A2 and 1A3 homology models, additional docking studies, and additional cytotoxicity data, and ALDH expression for cell lines. (PDF)

Molecular Formula Strings (CSV)

Coordinates for ALDH1A2 and ALDH1A3 homology models (PDB)

Accession Codes:

Atomic coordinates of ALDH1A1 bound to compounds **7** (PDB code [5TEI](#)), **13g** (PDB code [5WDV](#)) have been deposited with the Protein Data Bank. The authors will release the atomic coordinates and experimental data upon article publication.

AUTHOR INFORMATION

Corresponding Author:

* R.J.B.: Email, buckanovichrj@mwri.magee.edu . S.D.L.: Phone, (734)615-0454 ; Email, sdlarsen@med.umich.edu

Author Contributions:

&Brandt C. Huddle and Edward Grimley contributed equally to this work.

Disclosure of financial interests: The authors declare no competing financial interest.

ACKNOWLEDGEMENTS

Results shown in this report are derived from work performed at Argonne National Laboratory, Structural Biology Center at the Advanced Photon Source. Argonne is operated by UChicago Argonne, LLC, for the U.S. Department of Energy, Office of Biological and Environmental Research under contract DE-AC02-06CH11357. This work was supported by grants from the Center for the Discovery of New Medicines, University of Michigan (RJB), the Michigan Ovarian Cancer Alliance (GM), the Rivkin Center for Ovarian Cancer (GM), NIH R01 CA214567-01 (SDL and RJB), and DOD OCRP Early Career Investigator Award W81XWH-13-1-0134 (GM).

ABBREVIATIONS USED

ALDH, aldehyde dehydrogenase; ATRA, all-trans retinoic acid; CI, combination index; CSC, cancer stem cell; DEAB, diethylamino benzoic acid; EOC, epithelial ovarian cancer; EtOAc, ethyl acetate; FACS, fluorescence-activated cell sorting; FBS, fetal bovine serum; Hex, Hexanes; NCS, isothiocyanate; MLM, mouse liver microsomes; SEM, standard error of the mean; SFM, serum free medium.

REFERENCES

1. Cancer Facts & Figures. *American Cancer Society* **2015**.
2. Ozols, R. F.; Bundy, B. N.; Greer, B. E.; Fowler, J. M.; Clarke-Pearson, D.; Burger, R. A.; Mannel, R. S.; DeGeest, K.; Hartenbach, E. M.; Baergen, R. Phase III Trial of Carboplatin and Paclitaxel Compared With Cisplatin and Paclitaxel in Patients With Optimally Resected Stage III Ovarian Cancer: A Gynecologic Oncology Group Study. *Journal of Clinical Oncology* **2003**, *21* (17), 3194-3200.
3. Thigpen, T.; duBois, A.; McAlpine, J.; DiSaia, P.; Fujiwara, K.; Hoskins, W.; Kristensen, G.; Mannel, R.; Markman, M.; Pfisterer, J.; Quinn, M.; Reed, N.; Swart, A. M.; Berek, J.; Colombo, N.; Freyer, G.; Gallardo, D.; Plante, M.; Poveda, A.; Rubinstein, L.; Bacon, M.; Kitchener, H.; Stuart, G. C. First-line Therapy in Ovarian Cancer Trials. *Int J Gynecol Cancer* **2011**, *21* (4), 756-762.
4. Cannistra, S. A. Cancer of the Ovary. *New England Journal of Medicine* **2004**, *351* (24), 2519-2529.
5. Landen, C. N., Jr.; Goodman, B.; Katre, A. A.; Steg, A. D.; Nick, A. M.; Stone, R. L.; Miller, L. D.; Mejia, P. V.; Jennings, N. B.; Gershenson, D. M.; Bast, R. C., Jr.; Coleman, R. L.; Lopez-Berestein, G.; Sood, A. K. Targeting Aldehyde Dehydrogenase Cancer Stem Cells in Ovarian Cancer. *Mol Cancer Ther* **2010**, *9* (12), 3186-3199.
6. Steg, A. D.; Bevis, K. S.; Katre, A. A.; Ziebarth, A.; Dobbin, Z. C.; Alvarez, R. D.; Zhang, K.; Conner, M.; Landen, C. N., Stem Cell Pathways Contribute to Clinical Chemoresistance in Ovarian Cancer. *Clin Cancer Res* Feb 1, 2012, pp 869-881.
7. Silva, I. A.; Bai, S.; McLean, K.; Yang, K.; Griffith, K.; Thomas, D.; Ginestier, C.; Johnston, C.; Kueck, A.; Reynolds, R. K.; Wicha, M. S.; Buckanovich, R. J. Aldehyde Dehydrogenase in Combination with CD133 Defines Angiogenic Ovarian Cancer Stem Cells that Portend Poor Patient Survival. *Cancer Res* **2011**, *71* (11), 3991-4001.

8. Choi, Y.-J.; Ingram, P. N.; Yang, K.; Coffman, L.; Iyengar, M.; Bai, S.; Thomas, D. G.; Yoon, E.; Buckanovich, R. J. Identifying an Ovarian Cancer Cell Hierarchy Regulated by Bone Morphogenetic Protein 2. *Proceedings of the National Academy of Sciences* **2015**, *112* (50), E6882-E6888.
9. Yoshida, G. J.; Saya, H. Therapeutic Strategies Targeting Cancer Stem Cells. *Cancer Sci* **2016**, *107* (1), 5-11.
10. Kryczek, I.; Liu, S.; Roh, M.; Vatan, L.; Szeliga, W.; Wei, S.; Banerjee, M.; Mao, Y.; Kotarski, J.; Wicha, M. S.; Liu, R.; Zou, W. Expression of Aldehyde Dehydrogenase and CD133 Defines Ovarian Cancer Stem Cells. *Int J Cancer* **2011**, *130* (1), 29-39.
11. Deng, S.; Yang, X.; Lassus, H.; Liang, S.; Kaur, S.; Ye, Q.; Li, C.; Wang, L. P.; Roby, K. F.; Orsulic, S.; Connolly, D. C.; Zhang, Y.; Montone, K.; Butzow, R.; Coukos, G.; Zhang, L. Distinct Expression Levels and Patterns of Stem Cell Marker, Aldehyde Dehydrogenase Isoform 1 (ALDH1), in Human Epithelial Cancers. *PLoS ONE* **2010**, *5* (4), e10277.
12. Pal, D.; Kolluru, V.; Chandrasekaran, B.; Baby, B. V.; Aman, M.; Suman, S.; Sirimulla, S.; Sanders, M. A.; Alatassi, H.; Ankem, M. K.; Damodaran, C. Targeting Aberrant Expression of Notch-1 in ALDH(+) Cancer Stem Cells in Breast Cancer. *Mol Carcinog* **2017**, *56* (3), 1127-1136.
13. Koppaka, V.; Thompson, D. C.; Chen, Y.; Ellermann, M.; Nicolaou, K. C.; Juvonen, R. O.; Petersen, D.; Deitrich, R. A.; Hurley, T. D.; Vasiliou, V. Aldehyde Dehydrogenase Inhibitors: a Comprehensive Review of the Pharmacology, Mechanism of Action, Substrate Specificity, and Clinical Application. *Pharmacological Reviews* **2012**, *64* (3), 520-539.
14. Xu, X.; Chai, S.; Wang, P.; Zhang, C.; Yang, Y.; Wang, K. Aldehyde Dehydrogenases and Cancer Stem Cells. *Cancer Lett* **2015**, *369* (1), 50-57.
15. Pors, K.; Moreb, J. S. Aldehyde Dehydrogenases in Cancer: an Opportunity for Biomarker and Drug Development? *Drug Discovery Today* **2014**, *19* (12), 1953-1963.

16. Moreb, J. S.; Baker, H. V.; Chang, L. J.; Amaya, M.; Lopez, M. C.; Ostmark, B.; Chou, W. ALDH Isozymes Downregulation Affects Cell Growth, Cell Motility and Gene Expression in Lung Cancer Cells. *Mol Cancer* **2008**, *7*, 87.
17. Luo, Y.; Dallaglio, K.; Chen, Y.; Robinson, W. A.; Robinson, S. E.; McCarter, M. D.; Wang, J.; Gonzalez, R.; Thompson, D. C.; Norris, D. A.; Roop, D. R.; Vasilidou, V.; Fujita, M. ALDH1A Isozymes are Markers of Human Melanoma Stem Cells and Potential Therapeutic Targets. *Stem Cells* **2012**, *30* (10), 2100-2113.
18. Li, Z.; Xiang, Y.; Xiang, L.; Xiao, Y.; Li, F.; Hao, P. ALDH Maintains the Stemness of Lung Adenoma Stem Cells by Suppressing the Notch/CDK2/CCNE Pathway. *PLoS One* **2014**, *9* (3), e92669.
19. Duong, H. Q.; Hwang, J. S.; Kim, H. J.; Kang, H. J.; Seong, Y. S.; Bae, I. Aldehyde Dehydrogenase 1A1 Confers Intrinsic and Acquired Resistance to Gemcitabine in Human Pancreatic Adenocarcinoma MIA PaCa-2 Cells. *Int J Oncol* **2012**, *41* (3), 855-861.
20. Condello, S.; Morgan, C. A.; Nagdas, S.; Cao, L.; Turek, J.; Hurley, T. D.; Matei, D. Beta-Catenin-Regulated ALDH1A1 is a Target in Ovarian Cancer Spheroids. *Oncogene* **2015**, *34* (18), 2297-2308.
21. Yokoyama, Y.; Zhu, H.; Lee, J. H.; Kossenkov, A. V.; Wu, S. Y.; Wickramasinghe, J. M.; Yin, X.; Palozola, K. C.; Gardini, A.; Showe, L. C.; Zaret, K. S.; Liu, Q.; Speicher, D.; Conejo-Garcia, J. R.; Bradner, J. E.; Zhang, Z.; Sood, A. K.; Ordog, T.; Bitler, B. G.; Zhang, R. BET Inhibitors Suppress ALDH Activity by Targeting ALDH1A1 Super-Enhancer in Ovarian Cancer. *Cancer Res* **2016**, *76* (21), 6320-6330.
22. Chen, M. H.; Weng, J. J.; Cheng, C. T.; Wu, R. C.; Huang, S. C.; Wu, C. E.; Chung, Y. H.; Liu, C. Y.; Chang, M. H.; Chiang, K. C.; Yeh, T. S.; Su, Y.; Yeh, C. N. ALDH1A3, the Major Aldehyde Dehydrogenase Isoform in Human Cholangiocarcinoma Cells, Affects Prognosis and Gemcitabine Resistance in Cholangiocarcinoma Patients. *Clin Cancer Res* **2016**, *22* (16), 4225-4235.
23. Cortes-Dericks, L.; Froment, L.; Boesch, R.; Schmid, R. A.; Karoubi, G. Cisplatin-Resistant Cells in Malignant Pleural Mesothelioma Cell Lines Show ALDH(high)CD44(+) Phenotype and Sphere-Forming Capacity. *BMC cancer* **2014**, *14*, 304.

24. Saw, Y.-T.; Yang, J.; Ng, S.-K.; Liu, S.; Singh, S.; Singh, M.; Welch, W. R.; Tsuda, H.; Fong, W.-P.; Thompson, D.; Vasiliou, V.; Berkowitz, R. S.; Ng, S.-W. Characterization of Aldehyde Dehydrogenase Isozymes in Ovarian Cancer Tissues and Sphere Cultures. *BMC cancer* **2012**, *12* (1), 329.
25. Bowtell, D. D.; Böhm, S.; Ahmed, A. A.; Aspuria, P.-J.; Bast Jr, R. C.; Beral, V.; Berek, J. S.; Birrer, M. J.; Blagden, S.; Bookman, M. A.; Brenton, J. D.; Chiappinelli, K. B.; Martins, F. C.; Coukos, G.; Drapkin, R.; Edmondson, R.; Fotopoulou, C.; Gabra, H.; Galon, J.; Gourley, C.; Heong, V.; Huntsman, D. G.; Iwanicki, M.; Karlan, B. Y.; Kaye, A.; Lengyel, E.; Levine, D. A.; Lu, K. H.; McNeish, I. A.; Menon, U.; Narod, S. A.; Nelson, B. H.; Nephew, K. P.; Pharoah, P.; Powell Jr, D. J.; Ramos, P.; Romero, I. L.; Scott, C. L.; Sood, A. K.; Stronach, E. A.; Balkwill, F. R. Rethinking Ovarian Cancer II: Reducing Mortality From High-grade Serous Ovarian Cancer. *Nature Reviews Cancer* **2015**, *15*, 668.
26. Yasgar, A.; Titus, S. A.; Wang, Y.; Danchik, C.; Yang, S.-M.; Vasiliou, V.; Jadhav, A.; Maloney, D. J.; Simeonov, A.; Martinez, N. J. Correction: A High-Content Assay Enables the Automated Screening and Identification of Small Molecules with Specific ALDH1A1-Inhibitory Activity. *PLOS ONE* **2018**, *13* (5), e0197292.
27. Morgan, C. A.; Parajuli, B.; Buchman, C. D.; Dria, K.; Hurley, T. D. N,N-Diethylaminobenzaldehyde (DEAB) as a Substrate and Mechanism-Based Inhibitor for Human ALDH Isoenzymes. *Chemico-Biological Interactions* **2015**, *234* (0), 18-28.
28. Croker, A. K.; Allan, A. L. Inhibition of Aldehyde Dehydrogenase (ALDH) Activity Reduces Chemotherapy and Radiation Resistance of Stem-Like ALDHhiCD44+ Human Breast Cancer Cells. *Breast Cancer Research and Treatment* **2012**, *133* (1), 75-87.
29. Liu, P.; Brown, S.; Goktug, T.; Channathodiyil, P.; Kannappan, V.; Hugnot, J. P.; Guichet, P. O.; Bian, X.; Armesilla, A. L.; Darling, J. L.; Wang, W. Cytotoxic Effect of Disulfiram/Copper on Human Glioblastoma Cell Lines and ALDH-Positive Cancer-Stem-Like Cells. *Br J Cancer* **2012**, *107* (9), 1488-1497.

30. Nechushtan, H.; Hamamreh, Y.; Nidal, S.; Gotfried, M.; Baron, A.; Shalev, Y. I.; Nisman, B.; Peretz, T.; Peylan-Ramu, N. A Phase IIb Trial Assessing the Addition of Disulfiram to Chemotherapy for the Treatment of Metastatic Non-Small Cell Lung Cancer. *Oncologist* **2015**, *20* (4), 366-367.
31. Skrott, Z.; Mistrik, M.; Andersen, K. K.; Friis, S.; Majera, D.; Gursky, J.; Ozdian, T.; Bartkova, J.; Turi, Z.; Moudry, P.; Kraus, M.; Michalova, M.; Vaclavkova, J.; Dzubak, P.; Vrobel, I.; Pouckova, P.; Sedlacek, J.; Miklovicova, A.; Kutt, A.; Li, J.; Mattova, J.; Driessen, C.; Dou, Q. P.; Olsen, J.; Hajdich, M.; Cvek, B.; Deshaies, R. J.; Bartek, J. Alcohol-Abuse Drug Disulfiram Targets Cancer Via p97 Segregase Adaptor NPL4. *Nature* **2017**, *552*, 194.
32. Arnold, S. L.; Kent, T.; Hogarth, C. A.; Schlatt, S.; Prasad, B.; Haenisch, M.; Walsh, T.; Muller, C. H.; Griswold, M. D.; Amory, J. K.; Isoherranen, N. Importance of ALDH1A Enzymes in Determining Human Testicular Retinoic Acid Concentrations. *J Lipid Res* **2015**, *56* (2), 342-357.
33. Oster, G.; Kilburn, K. H.; Siegal, F. P. Chemically Induced Congenital Thymic Dysgenesis in the Rat: a Model of the DiGeorge Syndrome. *Clin Immunol Immunopathol* **1983**, *28* (1), 128-134.
34. Morgan, C. A.; Hurley, T. D. Development of a High-Throughput In Vitro Assay to Identify Selective Inhibitors for Human ALDH1A1. *Chemico-Biological Interactions* **2015**, *234* (0), 29-37.
35. Morgan, C. A.; Hurley, T. D. Characterization of Two Distinct Structural Classes of Selective Aldehyde Dehydrogenase 1A1 Inhibitors. *J Med Chem* **2015**, *58* (4), 1964-1975.
36. Yang, S. M.; Yasgar, A.; Miller, B.; Lal-Nag, M.; Brimacombe, K.; Hu, X.; Sun, H.; Wang, A.; Xu, X.; Nguyen, K.; Oppermann, U.; Ferrer, M.; Vasiliou, V.; Simeonov, A.; Jadhav, A.; Maloney, D. J. Discovery of NCT-501, a Potent and Selective Theophylline-Based Inhibitor of Aldehyde Dehydrogenase 1A1 (ALDH1A1). *J Med Chem* **2015**, *58* (15), 5967-5978.
37. Yang, S. M.; Martinez, N. J.; Yasgar, A.; Danchik, C.; Johansson, C.; Wang, Y.; Baljinnyam, B.; Wang, A. Q.; Xu, X.; Shah, P.; Cheff, D.; Wang, X. S.; Roth, J.; Lal-Nag, M.; Dunford, J. E.; Oppermann, U.; Vasiliou, V.; Simeonov, A.; Jadhav, A.; Maloney, D. J. Discovery of Orally Bioavailable, Quinoline-Based

- Aldehyde Dehydrogenase 1A1 (ALDH1A1) Inhibitors with Potent Cellular Activity. *J Med Chem* **2018**, *61* (11), 4883-4903.
38. Liu, J.; Mao, L.; Wang, X.; Xu, X.; Zhao, L. Pyrazolopyrimidine Derivatives and Uses as Anticancer Agents. WO2012097196A1, 2012.
39. Guccione, S.; Russo, F.; Raffaelli, A.; Barretta, G. U.; Pucci, S.; Scolaro, L. M. Potential of Alkyl Orthoformates as Alkylating Agents of Non-Electron Rich Nitrogen Heterocycles. *Journal of Heterocyclic Chemistry* **1995**, *32* (4), 1149-1158.
40. Nath, J.; Ghosh, H.; Yella, R.; Patel, B. K. Molecular Iodine Mediated Preparation of Isothiocyanates from Dithiocarbamic Acid Salts. *European Journal of Organic Chemistry* **2009**, *2009* (12), 1849-1851.
41. Kinzler, K.; Nilbert, M.; Su, L.; Vogelstein, B.; Bryan, T.; Levy, D.; Smith, K.; Preisinger, A.; Hedge, P.; McKechnie, D. Identification of FAP Locus Genes from Chromosome 5q21. *Science* **1991**, *253* (5020), 661-665.
42. *MarvinSketch Calculator Plugins were used for ADME predictions, Marvin 15.6.15, 2015, ChemAxon* <http://www.chemaxon.com> (accessed: 06/05/2018).
43. Chen, Y.; Zhu, J. Y.; Hong, K. H.; Mikles, D. C.; Georg, G. I.; Goldstein, A. S.; Amory, J. K.; Schonbrunn, E. Structural Basis of ALDH1A2 Inhibition by Irreversible and Reversible Small Molecule Inhibitors. *ACS chemical biology* **2018**, *13* (3), 582-590.
44. Beaufort, C. M.; Helmijs, J. C. A.; Piskorz, A. M.; Hoogstraat, M.; Ruigrok-Ritstier, K.; Besselink, N.; Murtaza, M.; van Ijcken, W. F. J.; Heine, A. A. J.; Smid, M.; Koudijs, M. J.; Brenton, J. D.; Berns, E. M. J. J.; Helleman, J. Ovarian Cancer Cell Line Panel (OCCP): Clinical Importance of In Vitro Morphological Subtypes. *PLOS ONE* **2014**, *9* (9), e103988.
45. Blayney, J. K.; Davison, T.; McCabe, N.; Walker, S.; Keating, K.; Delaney, T.; Greenan, C.; Williams, A. R.; McCluggage, W. G.; Capes-Davis, A.; Harkin, D. P.; Gourley, C.; Kennedy, R. D. Prior Knowledge Transfer Across Transcriptional Data Sets and Technologies Using Compositional Statistics Yields New Mislabelled Ovarian Cell Line. *Nucleic Acids Res* **2016**, *44* (17), e137.

46. Zhou, Q.; Chen, A.; Song, H.; Tao, J.; Yang, H.; Zuo, M. Prognostic Value of Cancer Stem Cell Marker CD133 in Ovarian Cancer: a Meta-Analysis. *International Journal of Clinical and Experimental Medicine* **2015**, *8* (3), 3080-3088.
47. Okita, K.; Matsumura, Y.; Sato, Y.; Okada, A.; Morizane, A.; Okamoto, S.; Hong, H.; Nakagawa, M.; Tanabe, K.; Tezuka, K.; Shibata, T.; Kunisada, T.; Takahashi, M.; Takahashi, J.; Saji, H.; Yamanaka, S. A More Efficient Method to Generate Integration-Free Human iPS Cells. *Nature methods* **2011**, *8* (5), 409-412.
48. Bretz, N.; Noske, A.; Keller, S.; Erbe-Hofmann, N.; Schlange, T.; Salnikov, A. V.; Moldenhauer, G.; Kristiansen, G.; Altevogt, P. CD24 Promotes Tumor Cell Invasion by Suppressing Tissue Factor Pathway Inhibitor-2 (TFPI-2) in a c-Src-Dependent Fashion. *Clin Exp Metastasis* **2012**, *29* (1), 27-38.
49. Dylla, S. J.; Beviglia, L.; Park, I. K.; Chartier, C.; Raval, J.; Ngan, L.; Pickell, K.; Aguilar, J.; Lazetic, S.; Smith-Berdan, S.; Clarke, M. F.; Hoey, T.; Lewicki, J.; Gurney, A. L. Colorectal Cancer Stem Cells are Enriched in Xenogeneic Tumors Following Chemotherapy. *PLoS ONE* **2008**, *3* (6), e2428.
50. Wheeler, A. R.; Thronset, W. R.; Whelan, R. J.; Leach, A. M.; Zare, R. N.; Liao, Y. H.; Farrell, K.; Manger, I. D.; Daridon, A. Microfluidic Device for Single-Cell Analysis. *Analytical chemistry* **2003**, *75* (14), 3581-3586.
51. Canino, C.; Luo, Y.; Marcato, P.; Blandino, G.; Pass, H. I.; Cioce, M. A STAT3-NFkB/DDIT3/CEBP β Axis Modulates ALDH1A3 Expression in Chemoresistant Cell Subpopulations. *Oncotarget* **2015**, *6* (14), 12637-12653.
52. Golubovskaya, V.; O'Brien, S.; Ho, B.; Heffler, M.; Conroy, J.; Hu, Q.; Wang, D.; Liu, S.; Cance, W. G. Down-Regulation of ALDH1A3, CD44 or MDR1 Sensitizes Resistant Cancer Cells to FAK Autophosphorylation Inhibitor Y15. *Journal of cancer research and clinical oncology* **2015**, *141* (9), 1613-1631.
53. Raha, D.; Wilson, T. R.; Peng, J.; Peterson, D.; Yue, P.; Evangelista, M.; Wilson, C.; Merchant, M.; Settleman, J. The Cancer Stem Cell Marker Aldehyde Dehydrogenase is Required to Maintain a Drug-Tolerant Tumor Cell Subpopulation. *Cancer Res* **2014**, *74* (13), 3579-3590.

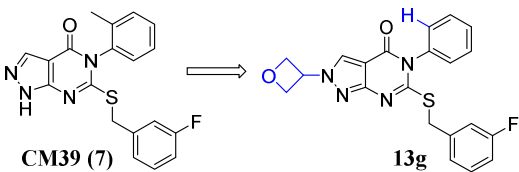
54. Chou, T. C.; Talalay, P. Quantitative Analysis of Dose-Effect Relationships: the Combined Effects of Multiple Drugs or Enzyme Inhibitors. *Adv Enzyme Regul* **1984**, *22*, 27-55.
55. Raghavan, S.; Ward, M. R.; Rowley, K. R.; Wold, R. M.; Takayama, S.; Buckanovich, R. J.; Mehta, G. Formation of Stable Small Cell Number Three-Dimensional Ovarian Cancer Spheroids Using Hanging Drop Arrays for Preclinical Drug Sensitivity Assays. *Gynecologic Oncology* **2015**, *138* (1), 181-189.
56. Shield, K.; Ackland, M. L.; Ahmed, N.; Rice, G. E. Multicellular Spheroids in Ovarian Cancer Metastases: Biology and Pathology. *Gynecologic Oncology* **2009**, *113* (1), 143-148.
57. Raghavan, S.; Mehta, P.; Ward, M. R.; Bregenzner, M. E.; Fleck, E. M. A.; Tan, L.; McLean, K.; Buckanovich, R. J.; Mehta, G. Personalized Medicine-Based Approach to Model Patterns of Chemoresistance and Tumor Recurrence Using Ovarian Cancer Stem Cell Spheroids. *Clin Cancer Res* **2017**, *23* (22), 6934-6945.
58. Otwinowski, Z.; Minor, W. Processing of X-ray Diffraction Data Collected in Oscillation Mode. *Methods Enzymol* **1997**, *276*, 307-326.
59. The CCP4 Suite: Programs for Protein Crystallography. *Acta Crystallogr D Biol Crystallogr* **1994**, *50* (Pt 5), 760-763.
60. Emsley, P.; Cowtan, K. Coot: Model-Building Tools for Molecular Graphics. *Acta Crystallogr D Biol Crystallogr* **2004**, *60* (Pt 12 Pt 1), 2126-2132.
61. Painter, J.; Merritt, E. A. Optimal Description of a Protein Structure in Terms of Multiple Groups Undergoing TLS Motion. *Acta Crystallogr D Biol Crystallogr* **2006**, *62* (Pt 4), 439-450.
62. Painter, J.; Merritt, E. A. A Molecular Viewer for the Analysis of TLS Rigid-Body Motion in Macromolecules. *Acta Crystallogr D Biol Crystallogr* **2005**, *61* (Pt 4), 465-471.
63. Hammen, P. K.; Allali-Hassani, A.; Hallenga, K.; Hurley, T. D.; Weiner, H. Multiple Conformations of NAD and NADH when Bound to Human Cytosolic and Mitochondrial Aldehyde Dehydrogenase. *Biochemistry* **2002**, *41* (22), 7156-7168.
64. Parajuli, B.; Kimble-Hill, A. C.; Khanna, M.; Ivanova, Y.; Meroueh, S.; Hurley, T. D. Discovery of Novel Regulators of Aldehyde Dehydrogenase Isoenzymes. *Chem Biol Interact* **2011**, *191* (1-3), 153-158.

65. Parajuli, B.; Georgiadis, T. M.; Fishel, M. L.; Hurley, T. D. Development of Selective Inhibitors for Human Aldehyde Dehydrogenase 3A1 (ALDH3A1) for the Enhancement of Cyclophosphamide Cytotoxicity. *Chembiochem* **2014**, *15* (5), 701-712.
66. Buchman, C. D.; Hurley, T. D. Inhibition of the Aldehyde Dehydrogenase 1/2 Family by Psoralen and Coumarin Derivatives. *J Med Chem* **2017**, *60* (6), 2439-2455.
67. Raghavan, S.; Mehta, P.; Horst, E. N.; Ward, M. R.; Rowley, K. R.; Mehta, G.; Raghavan, S.; Mehta, P.; Horst, E. N.; Ward, M. R.; Rowley, K. R.; Mehta, G. Comparative Analysis of Tumor Spheroid Generation Techniques for Differential In Vitro Drug Toxicity. *Oncotarget* **2016**, *7* (13), 16948-16961.
68. Biasini, M.; Bienert, S.; Waterhouse, A.; Arnold, K.; Studer, G.; Schmidt, T.; Kiefer, F.; Gallo Cassarino, T.; Bertoni, M.; Bordoli, L.; Schwede, T. SWISS-MODEL: Modelling Protein Tertiary and Quaternary Structure Using Evolutionary Information. *Nucleic Acids Res* **2014**, *42* (Web Server issue), W252-258.
69. Arnold, K.; Bordoli, L.; Kopp, J.; Schwede, T. The SWISS-MODEL Workspace: a Web-Based Environment for Protein Structure Homology Modelling. *Bioinformatics* **2006**, *22* (2), 195-201.
70. Benkert, P.; Biasini, M.; Schwede, T. Toward the Estimation of the Absolute Quality of Individual Protein Structure Models. *Bioinformatics* **2011**, *27* (3), 343-350.
71. Walther, C.; Guenet, J. L.; Simon, D.; Deutsch, U.; Jostes, B.; Goulding, M. D.; Plachov, D.; Balling, R.; Gruss, P. Pax: a Murine Multigene Family of Paired Box-Containing Genes. *Genomics* **1991**, *11* (2), 424-434.
72. Laskowski, R. A.; MacArthur, M. W.; Moss, D. S.; Thornton, J. M. PROCHECK - a Program to Check the Stereochemical Quality of Protein Structures. *J. App. Cryst.* **1993**, *26*, 283-291.
73. McGann, M. FRED and HYBRID Docking Performance on Standardized Datasets. *J Comput Aided Mol Des* **2012**, *26* (8), 897-906.

74. Hawkins, P. C.; Skillman, A. G.; Warren, G. L.; Ellingson, B. A.; Stahl, M. T. Conformer Generation with OMEGA: Algorithm and Validation Using High Quality Structures from the Protein Databank and Cambridge Structural Database. *J Chem Inf Model* **2010**, 50 (4), 572-584.

75. Kehler, J.; Rasmussen, L. K.; Jessing, M. Triazolopyrazinones as PDE1 Inhibitors. Patent: WO2016055618 A1. 2016.

TABLE OF CONTENTS GRAPHIC



0.9	ALDH1A1 IC ₅₀ (μM)	0.08
~20	ALDH1A2 IC ₅₀ (μM)	0.25
~20	ALDH1A3 IC ₅₀ (μM)	0.12
No	ALDEFLUOR Activity	Yes
	CD133 ⁺ Cell Depletion	Yes
	Synergizes with Cisplatin	Yes
9	MLM t _{1/2} (min)	23

