

# Nucleophilic substitution reactions of $\alpha$ -chloroacetanilides with benzylamines in dimethyl sulfoxide

Ki Sun Lee, Keshab Kumar Adhikary, Hai Whang Lee,\* Bon-Su Lee and Ikchoon Lee\*

Department of Chemistry, Inha University, Incheon 402-751, Korea.

E-mail: hwlee@inha.ac.kr; ilee@inha.ac.kr; Fax: +82-32-865-4855

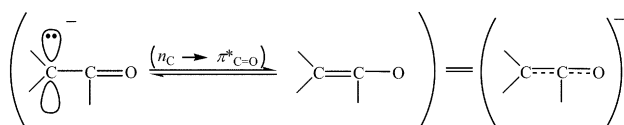
Received 21st January 2003, Accepted 2nd April 2003

First published as an Advance Article on the web 15th April 2003

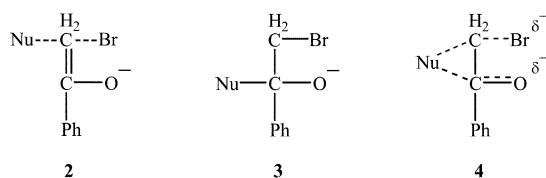
Kinetic studies of the reactions of  $\alpha$ -chloroacetanilides ( $\text{YC}_6\text{H}_4\text{NRC}(=\text{O})\text{CH}_2\text{Cl}$ ;  $\text{R} = \text{H}$  (**5**) and  $\text{CH}_3$  (**6**)) with benzylamines ( $\text{NH}_2\text{CH}_2\text{C}_6\text{H}_4\text{X}$ ) were carried out in dimethyl sulfoxide at  $55.0^\circ\text{C}$ . The Brønsted  $\beta_{\text{X}}$  values were in the range from 0.6 to 0.9 and cross-interaction constants  $\rho_{\text{XY}}$  were positive:  $\rho_{\text{XY}} = +0.21$  and  $+0.18$  for **5** and **6**, respectively. The rates were faster with **6** than with **5** and inverse secondary kinetic isotope effects involving deuterated benzylamine ( $\text{ND}_2\text{CH}_2\text{C}_6\text{H}_4\text{X}$ ) nucleophiles,  $k_{\text{H}}/k_{\text{D}} < 1.0$ , were obtained. Based on these and other results, a stepwise mechanism with rate-limiting expulsion of the chloride leaving group from a zwitterionic tetrahedral intermediate,  $\text{T}^\pm$ , is proposed. In this mechanism, a prior carbonyl addition to  $\text{T}^\pm$  is followed by a bridged type transition state to expel the chloride. An enolate-like transition state in which the developing negative charge on  $\text{C}_\alpha$  delocalizes toward the carbonyl group ( $\text{n}_{\text{C}} \rightarrow \pi^*_{\text{C=O}}$  interaction) is not feasible for the present series of reactions due to a stronger charge transfer involving the lone pair on the anilino nitrogen ( $\text{n}_{\text{AN}} \rightarrow \pi^*_{\text{C=O}}$  interaction).

## Introduction

The nucleophilic substitution reaction of  $\alpha$ -halocarbonyl compounds is known to have high reactivity.<sup>1</sup> It has been suggested that an adjacent carbonyl group accelerates the reaction by delocalizing the negative charge developed on the reaction center carbon in the transition state (TS), analogous to the enolate-like structure, **1**<sup>2</sup> (Scheme 1), an  $\alpha$ -acylcarbanion,<sup>2a</sup> due to vicinal charge transfer delocalization of the anionic lone pair ( $\text{n}_{\text{C}}$ ) toward the antibonding  $\pi$  orbital of the carbonyl group ( $\pi^*_{\text{C=O}}$ ), an  $\text{n}_{\text{C}} \rightarrow \pi^*_{\text{C=O}}$  interaction.<sup>3</sup> This process is a concerted nucleophilic displacement (an  $\text{S}_{\text{N}}2$  type) at the  $\alpha$ -carbon not at the carbonyl carbon. The high reactivity of  $\alpha$ -halocarbonyl systems, e.g., phenacyl bromide ( $\text{YC}_6\text{H}_4\text{COCH}_2\text{Br}$ ), has also been explained by proposing (i) enolate-like TS, **2**,<sup>2c</sup> (ii) prior addition of the nucleophile (Nu) to the carbonyl group, **3**<sup>4</sup> and (iii) bridging of the nucleophile between the  $\alpha$ -carbon and the carbonyl carbon, **4**.<sup>1b,4c,5</sup>



Scheme 1



In a previous work on the pyridinolysis of phenacyl bromide,<sup>6</sup> we observed a typical biphasic rate dependence on the amine basicity with a breakpoint at  $\text{p}K_{\text{a}}^{\circ} \approx 3.5$ , which was taken to indicate a mechanistic change at the breakpoint from

breakdown to formation of a zwitterionic tetrahedral intermediate,  $\text{T}^\pm$  (**3** with Nu = pyridinium ion), as the pyridine basicity is increased. In the rate-limiting step, expulsion of the leaving group,  $\text{Br}^-$ , occurs by formation of a bridged structure **4**. Thus, in this type of nucleophilic substitution mechanism of phenacyl halides we can nicely accommodate the two mechanisms **3** and **4**, proposed earlier separately by several authors, in one. Additional evidence for the proposed unified mechanism was the clear-cut change in the cross-interaction constant,<sup>7</sup>  $\rho_{\text{XY}}$  (eqns. (1a) and (1b), where X and Y are the substituents in the nucleophile and the substrate) from a large positive ( $\rho_{\text{XY}} = +1.4$ ) to a small positive ( $\rho_{\text{XY}} \approx +0.1$ ) value at the breakpoint.

$$\log(k_{\text{XY}}/k_{\text{HH}}) = \rho_{\text{X}}\sigma_{\text{X}} + \rho_{\text{Y}}\sigma_{\text{Y}} + \rho_{\text{XY}}\sigma_{\text{X}}\sigma_{\text{Y}} \quad (1a)$$

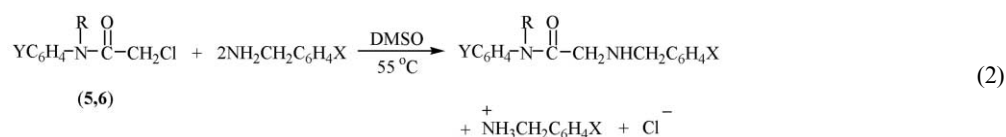
$$\rho_{\text{XY}} = \partial \rho_{\text{Y}} / \partial \sigma_{\text{X}} = \partial \rho_{\text{X}} / \partial \sigma_{\text{Y}} \quad (1b)$$

In view of the unresolved controversy surrounding the nucleophilic substitution mechanism of phenacyl systems (**2**, **3** and **4**), we explore further our unified mechanism presented in the previous work by conducting kinetic studies on the aminolysis of  $\alpha$ -chloroacetanilides (**5** and **6** with  $\text{R} = \text{H}$  and  $\text{CH}_3$ , respectively in eqn. (2)) with benzylamines in dimethyl sulfoxide at  $55.0^\circ\text{C}$  (eqn. (2)).

$\text{R} = \text{H}$  (**5**) and  $\text{CH}_3$  (**6**).  $\text{X} = p\text{-CH}_3\text{O}$ ,  $p\text{-CH}_3$ ,  $\text{H}$ ,  $p\text{-Cl}$  and  $m\text{-Cl}$ .  $\text{Y} = p\text{-CH}_3\text{O}$ ,  $p\text{-CH}_3$ ,  $\text{H}$ ,  $p\text{-Cl}$ ,  $m\text{-Cl}$  (only for **5**) and  $p\text{-NO}_2$ .

## Results and discussion

The reactions obeyed the kinetic law given by eqns. (3) and (4), where BnA is a benzylamine nucleophile. The second-order rate constants for aminolysis ( $k_{\text{N}}$ ) were obtained as the slopes of plots of eqn. (4) with more than five excess benzylamine concentrations. The  $k_{\text{N}}$  values are summarized in Tables 1 and 2 for **5** and **6**, respectively, together with Hammett constants ( $\rho_{\text{X}}$  and



X	Y						$\rho_{\text{Y}}^b$
	<i>p</i> -CH <sub>3</sub> O	<i>p</i> -CH <sub>3</sub>	H	<i>p</i> -Cl	<i>m</i> -Cl	<i>p</i> -NO <sub>2</sub>	
<i>p</i> -CH <sub>3</sub> O	0.641	0.704	0.979	1.04	1.43	2.08	0.49 ± 0.04
<i>p</i> -CH <sub>3</sub>	0.467	0.533	0.821	0.898	1.20	1.90	0.57 ± 0.05
H	0.420	0.455	0.763	0.845	1.09	1.73	0.59 ± 0.06
<i>p</i> -Cl	0.299	0.345	0.517	0.580	0.793	1.32	0.61 ± 0.04
<i>m</i> -Cl	0.219	0.253	0.435	0.460	0.653	1.09	0.65 ± 0.06
$\rho_{\text{X}}^c$	−0.66 ± 0.07	−0.63 ± 0.06	−0.54 ± 0.05	−0.54 ± 0.06	−0.51 ± 0.04	−0.43 ± 0.04	$\rho_{\text{XY}}^e = 0.21 \pm 0.06$
$\beta_{\text{X}}^d$	0.87 ± 0.08	0.81 ± 0.09	0.71 ± 0.02	0.71 ± 0.02	0.66 ± 0.03	0.56 ± 0.03	

<sup>a</sup> The  $\sigma$  values were taken from ref. 8. The  $\beta_{\text{X}}$  values were determined using  $\text{pK}_{\text{a}}$  values in water. The  $\text{pK}_{\text{a}}$  values of benzylamines in water at 25 °C were taken from ref. 9. <sup>b</sup> Correlation coefficients,  $r$ , were better than 0.981 in all cases. <sup>c</sup>  $r \geq 0.984$ . <sup>d</sup>  $r \geq 0.981$ . <sup>e</sup>  $r = 0.972$ .

X	Y					$\rho_X^b$
	<i>p</i> -CH <sub>3</sub> O	<i>p</i> -CH <sub>3</sub>	H	<i>p</i> -Cl	<i>p</i> -NO <sub>2</sub>	
<i>p</i> -CH <sub>3</sub> O	0.691	0.931	1.07	1.71	2.65	0.54 ± 0.07
<i>p</i> -CH <sub>3</sub>	0.599	0.755	0.981	1.58	2.47	0.58 ± 0.08
H	0.487	0.647	0.838	1.30	2.21	0.61 ± 0.07
<i>p</i> -Cl	0.301	0.426	0.536	0.834	1.49	0.63 ± 0.07
<i>m</i> -Cl	0.264	0.371	0.475	0.776	1.40	0.67 ± 0.07
$\rho_X^c$	−0.68 ± 0.04	−0.62 ± 0.04	−0.59 ± 0.05	−0.58 ± 0.05	−0.47 ± 0.05	$\rho_{XY}^e = 0.18 \pm 0.12$
$\beta_X^d$	0.87 ± 0.08	0.80 ± 0.09	0.75 ± 0.02	0.75 ± 0.02	0.61 ± 0.03	

<sup>a</sup> Same as in Table 1. <sup>b</sup>  $r \geq 0.982$ . <sup>c</sup>  $r \geq 0.977$ . <sup>d</sup>  $r \geq 0.978$ . <sup>e</sup>  $r = 0.968$ .

$$k_{\text{obsd}} = k_{\text{N}} [\text{BnA}] \quad (4)$$

Brønsted plots,  $\log k_N(\text{DMSO})$  vs.  $\text{p}K_a(\text{H}_2\text{O})$ , are shown in Fig. 1 for the aminolysis of **5**. Although the  $\beta_X (= \beta_{\text{nuc}})$  values are based on the plots of  $\log k_N(\text{DMSO})$  vs.  $\text{p}K_a(\text{H}_2\text{O})$ , they are considered to provide reasonable guides, as has been shown for the  $\beta_X$  values in the pyridinolysis of *N*-methyl-*N*-arylcabamoyl chloride ( $\text{YC}_6\text{H}_4\text{N}(\text{CH}_3)\text{C}(=\text{O})\text{Cl}$ ) in DMSO.<sup>10</sup> Spillane *et al.*<sup>11</sup> have also reported that the Brønsted coefficients ( $\beta_X$ ) for the reaction of *N*-phenylsulfamoyl chloride ( $\text{YC}_6\text{H}_4\text{NHSO}_2\text{Cl}$ ) with anilines in DMSO are similar when determined using  $\text{p}K_a$  values of anilines measured in water ( $\beta_X = 0.69$ ) and in DMSO ( $\beta_X = 0.62$ ).

$$\begin{array}{c} \text{Reactants (eq 2)} \xrightleftharpoons[k_{-a}]{k_a} \text{YC}_6\text{H}_4\text{N}^+\text{C}^-\text{O}^-\text{CH}_2\text{Cl} \xrightarrow[\text{rds}]{k_b} \left( \text{YC}_6\text{H}_4\text{N}^+\text{C}^-\text{O}^-\text{CH}_2\text{CH}_2\text{C}_6\text{H}_4\text{X} \right)^\ddagger \xrightarrow{\text{TS}} \text{Products} \end{array} \quad (5)$$

**Table 3** Kinetic isotope effects on the second-order rate constants ( $k_{\text{H}}/k_{\text{D}}$ ) for the reactions of  $\text{YC}_6\text{H}_4\text{NRC(=O)CH}_2\text{Cl}$  with  $\text{XC}_6\text{H}_4\text{CH}_2\text{ND}_2$  in dimethyl sulfoxide at 55.0 °C

R	X	Y	$k_{\text{H}}$ ( $10^{-2} \text{ M}^{-1} \text{ s}^{-1}$ )	$k_{\text{D}}$ ( $10^{-2} \text{ M}^{-1} \text{ s}^{-1}$ )	$k_{\text{H}}/k_{\text{D}}$
H (5)	<i>p</i> -CH <sub>3</sub> O	<i>p</i> -Cl	1.04	1.13	0.92
	<i>p</i> -CH <sub>3</sub> O	<i>p</i> -NO <sub>2</sub>	2.08	2.15	0.97
	H	<i>p</i> -Cl	0.845	0.970	0.87
	H	<i>p</i> -NO <sub>2</sub>	1.73	1.87	0.93
CH <sub>3</sub> (6)	<i>p</i> -CH <sub>3</sub> O	H	1.07	1.25	0.86
	<i>p</i> -CH <sub>3</sub> O	<i>p</i> -NO <sub>2</sub>	2.65	2.93	0.90
	H	H	0.838	1.01	0.83
	H	<i>p</i> -NO <sub>2</sub>	2.21	2.52	0.88

where  $k_{\text{N}} = (k_{\text{a}} / k_{\text{a}}^-)k_{\text{b}} = Kk_{\text{b}}$  based on the following grounds:

(1) MO theory states that it is the lowest unoccupied antibonding orbital (LUMO) that is attacked by a nucleophile.<sup>12</sup> In this respect there are two choices,  $\pi^*_{\text{C=O}}$  and  $\sigma^*_{\text{C-Cl}}$ , the former being much lower than the latter. For example, for formyl chloride ( $\text{HC(=O)Cl}$ ) the two antibonding orbital levels are  $\varepsilon(\pi^*_{\text{C=O}}) = 0.0795$  and  $\varepsilon(\sigma^*_{\text{C-Cl}}) = 0.1965$  au at the RHF/6-311++G\*\*\* // MP2/6-311+G\*\* level.<sup>13</sup> This means that the lone pair orbital ( $n_{\text{N}}$ ) on the amine nitrogen atom in the nucleophile interacts much more strongly with  $\pi^*_{\text{C=O}}$  than with  $\sigma^*_{\text{C-Cl}}$  and forms an intermediate  $\text{T}^\ddagger$  leading to a concerted ( $\text{S}_{\text{N}}2$ ) displacement at the  $\alpha$ -carbon; the wider the energy gap between two antibonding orbitals,  $\Delta\varepsilon = \varepsilon(\sigma^*) - \varepsilon(\pi^*)$ , the stronger the proclivity for formation of a stable carbonyl addition intermediate through  $n_{\text{N}} \rightarrow \pi^*_{\text{C=O}}$  interaction.<sup>14</sup> The intermediate  $\text{T}^\ddagger$  in eqn. (5) is formed in a rapid step ( $k_{\text{a}}$  is large) but the expulsion of the benzylamine from  $\text{T}^\ddagger$  is also fast ( $k_{\text{a}}^-$  is large). It has been shown that the sequence of amine expulsion rate from  $\text{T}^\ddagger$  is benzylamines > secondary alicyclic amines > anilines > pyridines.<sup>15</sup> The rapidly departing amine (BnA) then attacks the  $\sigma^*_{\text{C-Cl}}$  orbital in the rate-determining step with the bridging type structure (type 4) to expel the leaving group,  $\text{Cl}^-$ . This is reasonable, since in the intermediate (type 3) there is only one LUMO ( $\sigma^*_{\text{C-Cl}}$ ) left for the amine to attack. In the TS (eqn. (5)), the vicinal charge transfer delocalization of the lone pair on the anilino nitrogen ( $n_{\text{AN}}$ ) toward the developing carbonyl  $\pi^*_{\text{C=O}}$  orbital ( $n_{\text{AN}} \rightarrow \pi^*_{\text{C=O}}$  interaction) facilitates the expulsion of the leaving group from  $\text{T}^\ddagger$  by providing an extra stabilization for the TS leading to an increase in  $k_{\text{b}}$ . This is why we observed faster rates with 6 than with 5, comparing  $k_{\text{N}}$  values in Tables 1 and 2. The  $\text{CH}_3$  group is a stronger electron donor than H so that the  $n_{\text{AN}}$  level in 6 is raised to a higher level than that in 5 and leads to a smaller inter-frontier energy gap  $\Delta\varepsilon = \varepsilon(\pi^*) - \varepsilon(n_{\text{AN}})$ . The stabilization energy due to a vicinal charge transfer increases as the energy gap between the interacting orbitals becomes narrower.<sup>3b,16</sup> If the reactions proceeded by a direct attack on  $\sigma^*_{\text{C-Cl}}$  ( $\text{S}_{\text{N}}2$ ), possibly through an enolate-like TS (type 2), the electron donor R (=  $\text{CH}_3$ ) should have retarded the rate, since in the TS the reaction center carbon becomes more negative as evidenced by the positive  $\rho_{\text{Y}}$  ( $\rho_{\text{Y}} > 0$  in Tables 1 and 2).

(2) The sign of cross-interaction constant  $\rho_{\text{XY}}$  is positive,  $\rho_{\text{XY}} = +0.21$  and  $+0.18$  for the reactions of 5 and 6, respectively. This mechanistic criteria for the acyl transfer reactions has provided a useful means to distinguish between stepwise reactions via an intermediate ( $\rho_{\text{XY}} > 0$ ) and concerted ( $\text{S}_{\text{N}}2$ ) reactions ( $\rho_{\text{XY}} < 0$ ) via a single TS. For example, all the  $\text{S}_{\text{N}}2$  displacement reactions of benzyl ( $\text{YC}_6\text{H}_4\text{CH}_2-$ ),<sup>7b</sup> benzoyl ( $\text{YC}_6\text{H}_4\text{CO}-$ ),<sup>7b</sup> benzenesulfonyl ( $\text{YC}_6\text{H}_4\text{SO}_2-$ ),<sup>7b</sup> 1-phenylethyl ( $\text{YC}_6\text{H}_4\text{CH}(\text{CH}_3)-$ ),<sup>17</sup> 2-phenylethyl ( $\text{YC}_6\text{H}_4\text{CH}_2\text{CH}_2-$ ),<sup>18</sup> and 1-phenyl-2-propyl ( $\text{YC}_6\text{H}_4\text{CH}_2\text{CH}(\text{CH}_3)-$ )<sup>19</sup> derivatives with amines ( $\text{XC}_6\text{H}_4\text{NH}_2$ ,  $\text{XC}_6\text{H}_4\text{CH}_2\text{NH}_2$ , and  $\text{XC}_5\text{H}_4\text{N}$ ) are reported to give negative  $\rho_{\text{XY}}$  values. Also in the concerted ( $\text{S}_{\text{N}}2$ ) aminolyses of phenyl chloroformates ( $\text{YC}_6\text{H}_4\text{OCOC(=O)Cl}$ )<sup>20</sup> and aryl phenyl chlorophosphates ( $\text{YC}_6\text{H}_4\text{O(C}_6\text{H}_5\text{O)P(=O)Cl}$ )<sup>21</sup> with anilines in MeCN, the sign of  $\rho_{\text{XY}}$  was negative. In contrast, for the

stepwise aminolysis reactions of: *p*-nitrophenyl benzoates ( $\text{YC}_6\text{H}_4\text{C(=O)OC}_6\text{H}_4\text{-}p\text{-NO}_2$ )<sup>22</sup> with benzylamines in MeCN ( $\rho_{\text{XY}} = +0.4$ ), cinnamoyl chlorides ( $\text{YC}_6\text{H}_4\text{CHCHCOCl}$ )<sup>23</sup> with anilines in MeCN ( $\rho_{\text{XY}} = +0.88$ ), benzoic anhydrides ( $\text{YC}_6\text{H}_4\text{-COOCOC}_6\text{H}_5$ )<sup>24</sup> with anilines in MeOH ( $\rho_{\text{XY}} = +0.5$ ), phenyl dithiobenzoates ( $\text{YC}_6\text{H}_4\text{C(=S)SC}_6\text{H}_5$ )<sup>25</sup> with anilines in MeCN ( $\rho_{\text{XY}} = +0.66$ ), *p*-nitrophenyl *N*-phenylcarbamates ( $\text{YC}_6\text{H}_4\text{-NHCOOC}_6\text{H}_4\text{-}p\text{-NO}_2$ )<sup>26</sup> with benzylamines in MeCN ( $\rho_{\text{XY}} = +1.10$ ), phenyl chloroformates<sup>27</sup> with pyridines in MeCN ( $\rho_{\text{XY}} = +0.31$ ), and phenacyl bromide<sup>6</sup> with pyridines in MeCN ( $\rho_{\text{XY}} = +1.4 \rightarrow +0.1$ ), the sign of  $\rho_{\text{XY}}$  was always positive.<sup>28</sup> In the last example,<sup>6</sup> the  $\rho_{\text{XY}}$  values changed from a large positive ( $\rho_{\text{XY}} = +1.4$ ) to a small value ( $\rho_{\text{XY}} = +0.1$ ) as the mechanism changed at a pyridine basicity of 3.5 from breakdown to formation of  $\text{T}^\ddagger$  with the increase in basicity of pyridines. In all the aminolysis reactions of phenacyl derivatives<sup>6,7b</sup> the  $\rho_{\text{XY}}$  values were positive indicating that the reaction proceeded by a stepwise mechanism with prior formation of the carbonyl addition intermediate (type 3).

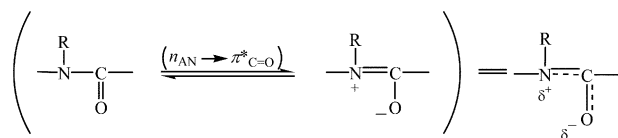
(3) The kinetic isotope effects on the rate,  $k_{\text{H}}/k_{\text{D}}$ , involving deuterated benzylamines ( $\text{ND}_2\text{CH}_2\text{C}_6\text{H}_4\text{X}$ ) are less than unity ( $k_{\text{H}}/k_{\text{D}} < 1.0$ ).<sup>29</sup> In the expulsion of leaving group  $\text{Cl}^-$  from  $\text{T}^\ddagger$ , the amine approaches at the  $\alpha$ -carbon so that the N–H (on benzylamine) vibrational modes are compressed and lead to the inverse secondary kinetic isotope effect,  $k_{\text{H}}/k_{\text{D}} < 1.0$ .<sup>29,30</sup> Smaller  $k_{\text{H}}/k_{\text{D}}$  values (Table 3) are obtained for an electron acceptor or a weaker electron donor X ( $\partial\sigma_{\text{X}} > 0$ ) than a stronger donor X indicating that the amine with  $\partial\sigma_{\text{X}} > 0$  approaches closer to the  $\alpha$ -carbon in the TS, i.e., bond making between benzylamine and  $\alpha$ -carbon is greater with a more positive  $\rho_{\text{Y}}$  value,  $\partial\rho_{\text{Y}} > 0$ . This is, of course, in line with the positive  $\rho_{\text{XY}}$  (eqn. (1b)) obtained in this work, but does not conform to a direct displacement ( $\text{S}_{\text{N}}2$ ) mechanism at  $\alpha$ -carbon for which the  $\rho_{\text{XY}}$  is negative, since  $\rho_{\text{XY}} = (\partial\rho_{\text{Y}}) / (\partial\sigma_{\text{X}}) = (-) / (+) < 0$  in eqn. (1b) requires a less positive  $\rho_{\text{Y}}$  value ( $\partial\rho_{\text{Y}} < 0$ ) for benzylamine with an electron acceptor X ( $\partial\sigma_{\text{X}} > 0$ ). Thus, the trends of changes in the inverse secondary kinetic isotope effects ( $k_{\text{H}}/k_{\text{D}} < 1.0$ ) are consistent with our proposed mechanism,<sup>30</sup> eqn. (5).

(4) A stronger acceptor Y (= *p*-NO<sub>2</sub>) leads to a relatively large  $k_{\text{H}}/k_{\text{D}}$  value with a lower activation enthalpy,  $\Delta H^\ddagger$ .<sup>31</sup> This suggests that the TS is at an earlier stage with a lower degree of  $\text{N} \cdots \text{C}_\alpha$  bond making (larger  $k_{\text{H}}/k_{\text{D}}$ ) and  $\text{C}_\alpha \cdots \text{Cl}$  bond cleavage (lower  $\Delta H^\ddagger$  value).<sup>31</sup> This is, however, an opposite trend to that expected from the  $\text{S}_{\text{N}}2$  type reactions for which  $\rho_{\text{XY}}$  is negative:  $\rho_{\text{XY}} = \partial\rho_{\text{X}} / \partial\sigma_{\text{Y}} < 0$  requires that  $\partial\sigma_{\text{Y}} > 0$  should lead to  $\partial\rho_{\text{X}} < 0$ , i.e., a more negative  $\rho_{\text{X}}$  with a greater degree of bond making in the TS. For example, the anilinolysis of 2-phenylethyl benzenesulfonates in MeOH<sup>18</sup> is reported to proceed by an  $\text{S}_{\text{N}}2$  mechanism with  $\rho_{\text{XY}} = -0.12$ . In this case,  $\rho_{\text{X}}$  changes to a more negative value ( $\rho_{\text{X}} = -1.14$  to  $-1.33$ ,  $\partial\rho_{\text{X}} < 0$ , indicating a greater degree of bond formation) and  $\rho_{\text{Z}}$  changes to a more positive value ( $\rho_{\text{Z}} = 0.99$  to  $1.10$ ,  $\partial\rho_{\text{Z}} > 0$ , indicating a greater extent of leaving group expulsion) in the TS as the substituent Y is changed from an electron donor, *p*-OCH<sub>3</sub>, to an acceptor, *p*-NO<sub>2</sub>, ( $\partial\sigma_{\text{Y}} > 0$ ).

(5) The  $\beta_{\text{X}}$  values range from 0.6 to 0.9 (in Tables 1 and 2). The lower end value, 0.6, seems somewhat smaller than that

normally considered to represent a stepwise mechanism with rate-limiting expulsion of the leaving group ( $\beta_X \geq 0.8$ ).<sup>32</sup> Nevertheless the  $\beta_X$  values are well within the range ( $\beta_X \geq 0.7$ – $0.8$  in water, and  $0.6$ – $0.7$  in MeCN) of those reported to be stepwise mechanisms. In the aminolysis of ethyl *S*-aryl thiocarbonates ( $C_2H_5OC(=O)SC_6H_4Z$ ) with secondary alicyclic amines in water the slopes were  $\beta_X = 0.7$ – $0.8$ <sup>33</sup> and in the pyridinolysis of *S*-phenyl *p*-nitrobenzoates ( $p\text{-NO}_2C_6H_4C(=O)SC_6H_4Z$ ) and aryl furan-2-carbodithioates ( $C_4H_3OC(=S)C_6H_4Z$ ) in MeCN the slopes were  $\beta_X = 0.6$ – $0.7$ <sup>34</sup> and  $0.7$ – $0.8$ ,<sup>35</sup> respectively. All these reactions were consistent with a stepwise mechanism where breakdown of  $T^\ddagger$  is rate-limiting. In the present work, the breakpoint,  $pK_a^\circ$ , at which  $k_{-a} \cong k_b$  and the rate-limiting step changes from breakdown to formation of  $T^\ddagger$ , was not observed. This is because the expulsion rate of benzylamine ( $k_{-a}$ ) from  $T^\ddagger$  is so large that the ratio  $k_{-a} : k_b$  becomes large, leading to a breakpoint that is higher than the  $pK_a^\circ$  values of benzylamine used in the rate measurements ( $pK_a^\circ \geq 9.7$ ; the upper limit of the  $pK_a^\circ$  of *p*-methoxybenzylamine employed). The  $pK_a^\circ$  value can only be observable when the expulsion rate of the amine from  $T^\ddagger$  ( $k_{-a}$ ) is low and the ratio  $k_{-a} : k_b$  becomes small.<sup>32,36</sup> Such examples are reported for the pyridinolysis of phenacyl bromide<sup>6</sup> and aryl furan-2-carbodithioates<sup>35</sup> in MeCN at  $pK_a^\circ = 3.5$  and  $5.2$ , respectively.

(6) The substituent effects of Y and R on the rate are two-fold: (i) on  $k_a$  in the initial intermediate formation step and, (ii) on  $k_b$  in the rate-limiting leaving group expulsion step from  $T^\ddagger$ . The two effects oppose each other. An electron withdrawing substituent Y ( $\partial\sigma_Y > 0$ ) enhances positive charge on the carbonyl carbon, or alternatively lowers the  $\pi^*_{C=O}$  level so that  $k_a$  is increased.<sup>16</sup> In contrast,  $k_b$  will be retarded, since an electron acceptor Y in the nonleaving group decreases the rate of expulsion of anionic leaving group,  $Cl^-$ . The enhanced rate observed with electron acceptors ( $\partial\sigma_Y > 0$ ) in Tables 1 and 2 testifies that the effect on  $k_a$  is greater than on  $k_b$ . This is reasonable since the carbonyl group (effect on  $k_a$ ) is nearer to Y than the  $\alpha$ -carbon (effect on  $k_b$ ). In contrast, the initial carbonyl addition step ( $k_a$ ) is retarded while the rate-limiting leaving group expulsion from  $T^\ddagger$  ( $k_b$ ) is enhanced by a stronger electron donating R ( $CH_3$  relative to H). The resonance delocalization of the lone pair on the anilino nitrogen (Scheme 2) raises the  $\pi^*_{C=O}$  level (higher for



Scheme 2

$CH_3$  than for H) leading to a decrease in the initial rate of attack by the amine ( $k_a$  is reduced) due to a weaker  $n_{AN} \rightarrow \pi^*_{C=O}$  interaction.<sup>16</sup> In contrast, in the expulsion of  $Cl^-$  from  $T^\ddagger$ , a stronger electron donating R ( $CH_3$ ) will lead to a stronger  $n_{AN} \rightarrow \pi^*_{C=O}$  interaction which provides a greater push for the expulsion of  $Cl^-$  from  $T^\ddagger$  in the TS. The greater rates ( $k_N$ ) observed with  $R = CH_3$  (Table 2) indicate that the effect of R on  $k_b$  is greater than on  $k_a$ . This is reasonable since a stronger electron donor in the nonleaving group ( $R = CH_3$ ) in  $T^\ddagger$  provides a greater push in the expulsion of anionic leaving group in the rate-limiting breakdown of  $T^\ddagger$ .<sup>32</sup>

(7) Reference to Tables 1 and 2 reveals that the faster rate ( $\partial k_N > 0$ ) is invariably accompanied by a smaller magnitude of selectivity parameters,  $\partial\beta_X < 0$ ,  $\partial\rho_Y < 0$ , and  $\partial|\rho_X| < 0$ , i.e., the reactivity-selectivity principle (RSP) holds.<sup>37</sup> The adherence of the rate data to the RSP is another criterion for the stepwise mechanism with rate-limiting expulsion of the leaving group from the intermediate<sup>38</sup> and provides additional support for our proposed mechanism in this work.

Finally, it is appropriate here to comment on the aminolysis mechanism with an enolate-like TS (type 2). The substrate used

in this work,  $YC_6H_4NRC(=O)CH_2Cl$ , has a strong delocalized structure, Scheme 2, due to the vicinal charge transfer interaction involving the lone pair on the anilino nitrogen ( $n_{AN}$ ),  $n_{AN} \rightarrow \pi^*_{C=O}$ . This is much stronger than the enolate-like structure in Scheme 1 since development of negative charge on the  $\alpha$ -carbon is not strong enough to form an anionic lone-pair which is required for the type of structure shown in Scheme 1. In any case, the  $n_{AN} \rightarrow \pi^*_{C=O}$  (Scheme 2) should be much stronger than the  $n_C \rightarrow \pi^*_{C=O}$  interaction (Scheme 1), so the enolate-like TS is not feasible in the present work. However, in the nucleophilic substitution reaction of an  $\alpha$ -halocarbonyl compound, e.g., phenacyl halides, the enolate-like TS may become competitive with the stepwise carbonyl addition mechanism proposed in the present work, provided the negative charge development on the  $\alpha$ -carbon in the TS is strong enough to warrant sizable  $n_C \rightarrow \pi^*_{C=O}$  interaction. However, the reactions in which development of such a strong negative charge on the  $\alpha$ -carbon is possible in the TS may not be common, and hence reactions proceeding with the enolate-like TS may be rare.

## Experimental

### Materials

GR grade dimethyl sulfoxide was dried with a 4 Å molecular sieve and then used after three distillations under reduced pressure. The benzylamine nucleophiles, GR grade, were used after recrystallization or distillation.

### Preparations of Y- $\alpha$ -chloroacetanilide and N-methyl Y- $\alpha$ -chloroacetanilide

The Y- $\alpha$ -chloroacetanilide (**5**) and N-methyl Y- $\alpha$ -chloroacetanilide (**6**) were prepared by the literature method<sup>39</sup> of esterification. Aniline derivatives and chloro acetic anhydride were dissolved in dried ether. In the case of **5**, the reaction mixture was extracted with water, and dried over  $MgSO_4$  and then recrystallized from *n*-hexane. In the case of **6**, solvent was removed under reduced pressure and the product was isolated by column chromatography (silica gel, 20–50% ethyl acetate–*n*-hexane).

***p*-Methoxy  $\alpha$ -chloroacetanilide.** White grey solid; mp 119–121 °C (lit.<sup>39b</sup> 121 °C);  $^1H$  NMR (200 MHz,  $CDCl_3$ ),  $\delta$  3.80 (s, 3H), 4.18 (s, 2H), 6.89 (d,  $J = 9.0$  Hz, 2H), 7.44 (d,  $J = 9.2$  Hz, 2H), 8.16 (s, 1H);  $m/z$  198 ( $M^+$ ).

***p*-Methyl  $\alpha$ -chloroacetanilide.** White solid; mp 162–164 °C (lit.<sup>39b</sup> 163 °C);  $^1H$  NMR (200 MHz,  $CDCl_3$ ),  $\delta$  2.34 (s, 3H), 4.19 (s, 2H), 7.17 (d,  $J = 8.4$  Hz, 2H), 7.43 (d,  $J = 8.4$  Hz, 2H), 8.20 (s, 1H);  $m/z$  183 ( $M^+$ ).

**$\alpha$ -Chloroacetanilide.** Brown solid; mp 134–135 °C (lit.<sup>39b</sup> 134 °C);  $^1H$  NMR (200 MHz,  $CDCl_3$ ),  $\delta$  4.18 (s, 2H), 7.25–7.53 (m, 5H), 8.16 (s, 1H);  $m/z$  169 ( $M^+$ ).

***p*-Chloro  $\alpha$ -chloroacetanilide.** Light brown solid; mp 168–170 °C (lit.<sup>39b</sup> 169 °C);  $^1H$  NMR (200 MHz,  $CDCl_3$ ),  $\delta$  4.20 (s, 2H), 7.33 (d,  $J = 8.8$  Hz, 2H), 7.52 (d,  $J = 9.2$  Hz, 2H), 8.22 (s, 1H);  $m/z$  203 ( $M^+$ ).

***m*-Chloro  $\alpha$ -chloroacetanilide.** Light brown solid; mp 98–100 °C; Anal. Found: C, 46.9; H, 3.5; N, 6.8. Calcd. for  $C_8H_7NOCl_2$ : C, 47.09; H, 3.46; N, 6.86%.  $^1H$  NMR (200 MHz,  $CDCl_3$ ),  $\delta$  4.20 (s, 2H), 7.02–7.68 (m, 4H), 8.23 (s, 1H);  $m/z$  214 ( $M^+$ ).

***p*-Nitro  $\alpha$ -chloroacetanilide.** Greenish yellow solid; mp 181–183 °C (lit.<sup>39b</sup> 183 °C);  $^1H$  NMR (200 MHz,  $CDCl_3$ ),  $\delta$  4.23 (s, 2H), 7.84 (d,  $J = 9.2$  Hz, 2H), 8.25 (d,  $J = 9.2$  Hz, 2H), 8.89 (s, 1H);  $m/z$  183 ( $M^+$ ).



**N-Methyl *p*-methoxy- $\alpha$ -chloroacetanilide.** Light brown oil; Anal. Found: C, 56.1; H, 5.5; N, 6.4. Calcd. for  $C_{10}H_{12}NO_2Cl$ : C, 56.22; H, 5.66; N, 6.56%. IR (KBr film)  $\nu_{\max}$  (Neat) 840 (C–N stretching), 1742  $cm^{-1}$  (C=O stretching);  $^1H$  NMR (200 MHz,  $CDCl_3$ )  $\delta$  3.28 (s, 3H), 3.84 (s, 5H), 6.95 (d,  $J$  = 8.8 Hz, 2H), 7.17 (d,  $J$  = 9.2 Hz, 2H);  $m/z$  (EI) 213 ( $M^+$ ).

**N-Methyl *p*-methyl- $\alpha$ -chloroacetanilide.** Brown oil; Anal. Found: C, 60.8; H, 6.3; N, 7.2. Calcd. for  $C_{10}H_{12}NOCl$ : C, 60.77; H, 6.12; N, 7.09%. IR (KBr film)  $\nu_{\max}$  (Neat) 827 (C–N stretching), 1746  $cm^{-1}$  (C=O stretching);  $^1H$  NMR (200 MHz,  $CDCl_3$ )  $\delta$  2.40 (s, 3H), 3.30 (s, 3H), 3.87 (s, 2H), 7.13 (d,  $J$  = 8.2 Hz, 2H), 7.25 (d,  $J$  = 8.4 Hz, 2H);  $m/z$  (CI) 198 ( $M^+$ ).

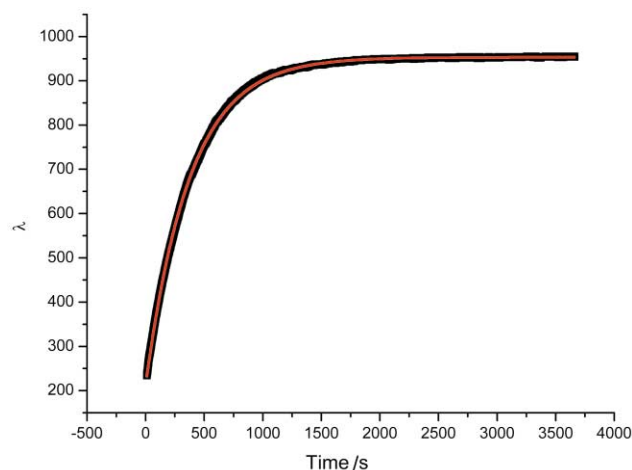
**N-Methyl  $\alpha$ -chloroacetanilide.** Light brown solid; mp 66–67 °C; Anal. Found: C, 58.7; H, 5.5; N, 7.5. Calcd. for  $C_9H_9NOCl$ : C, 58.87; H, 5.49; N, 7.63%. IR (KBr disk)  $\nu_{\max}$  801 (C–N stretching), 1686  $cm^{-1}$  (C=O stretching);  $^1H$  NMR (200 MHz,  $CDCl_3$ )  $\delta$  3.32 (s, 3H), 3.85 (s, 2H), 7.23–7.47 (m, 5H);  $m/z$  (EI) 183 ( $M^+$ ).

**N-Methyl *p*-chloro- $\alpha$ -chloroacetanilide.** Pale brown solid; mp 54–55 °C; Anal. Found: C, 49.4; H, 4.3; N, 6.2. Calcd. for  $C_9H_9NOCl_2$ : C, 49.57; H, 4.16; N, 6.42%. IR (KBr disk)  $\nu_{\max}$  850 (C–N stretching), 1681  $cm^{-1}$  (C=O stretching);  $^1H$  NMR (200 MHz,  $CDCl_3$ )  $\delta$  3.30 (s, 3H), 3.86 (s, 2H), 7.22 (d,  $J$  = 8.8 Hz, 2H), 7.44 (d,  $J$  = 8.4 Hz, 2H);  $m/z$  (CI) 218 (comp.) ( $M^+$ ), 184 (base).

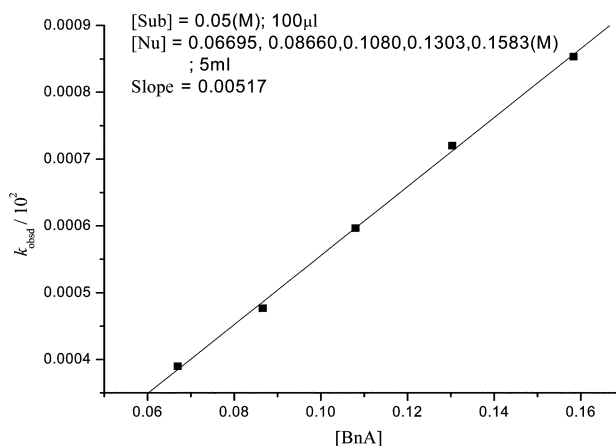
**N-Methyl *p*-nitro- $\alpha$ -chloroacetanilide.** Light brown solid; mp 111–112 °C; Anal. Found: C, 47.1; H, 4.1; N, 12.1. Calcd. for  $C_9H_9N_2O_3Cl$ : C, 47.28; H, 3.97; N, 12.25%. IR (KBr disk)  $\nu_{\max}$  861 (C–N stretching), 1681  $cm^{-1}$  (C=O stretching);  $^1H$  NMR (200 MHz,  $CDCl_3$ )  $\delta$  3.40 (s, 3H), 3.95 (s, 2H), 7.50 (d,  $J$  = 9.2 Hz, 2H), 8.34 (d,  $J$  = 10.6 Hz, 2H);  $m/z$  (EI) 228 ( $M^+$ ).

### Kinetic measurement

Rates were measured conductometrically in dimethyl sulfoxide at  $55.0 \pm 0.1$  °C (Fig. 2). A computer connected automatic A/D converter conductivity-bridge was used in this work. Pseudo-first-order rate constants,  $k_{\text{obsd}}$ , were determined with large excess of benzylamine; [Substrate] =  $1\text{--}5 \times 10^{-3}$  and [BnA] = 0.05–0.12 M. The second-order rate constants,  $k_N$ , were obtained from the slopes of plots of  $k_{\text{obsd}}$  vs. [BnA] with more than five concentrations of benzylamine (Fig. 3). Pseudo-first-order rate constant values were average of two (or three) runs which were reproducible to  $\pm 3\%$ .



**Fig. 2** A typical plot of conductivity ( $\lambda \times 10^{-6} S cm^{-1}$ ) vs. time (interval 3 s) for the reaction of  $\alpha$ -chloroacetanilides with *p*-chlorobenzylamine in DMSO at 55.0 °C. Black line: experimental, red line: curve by Origin method. [ $\alpha$ -Chloroacetanilide]  $\approx$  0.001 M; [*p*-chlorobenzylamine] = 0.1583 M.  $k_{\text{obsd}} = 0.00256/3 = 8.53 \times 10^{-4} s^{-1}$ .



**Fig. 3** A plot of  $k_{\text{obsd}}$  vs. concentration of *p*-chlorobenzylamine. Reaction:  $\alpha$ -chloroacetanilide ( $\approx$  0.001 M) with *p*-chlorobenzylamine in DMSO at 55.0 °C. Slope =  $k_N = 5.17 \times 10^{-3} M^{-1} s^{-1}$ ; intercept =  $4.28 \times 10^{-5} \approx 0$ ;  $r = 0.9993$ .

### Product analysis

*p*-Methyl- and *N*-methyl *p*-methyl-  $\alpha$ -chloroacetanilide (0.05 M) were reacted with benzylamine (0.5 M), in acetonitrile at 55.0. After more than 15 half-lives, solvent was removed under reduced pressure and the product was separated by column chromatography. Analytical data of the product gave the following results:

**$p\text{-CH}_3\text{C}_6\text{H}_4\text{NHC(=O)CH}_2\text{NHCH}_2\text{C}_6\text{H}_5$ .** White solid (silica gel, 10% acetonitrile–diethyl ether,  $R_f$  = 0.13); mp 80–81 °C; Anal. Found: C, 75.8; H, 7.2; N, 11.2. Calcd. for  $C_{16}H_{18}N_2O$ : C, 75.56; H, 7.13; N, 11.02%.  $^1H$  NMR (200 MHz,  $CDCl_3$ )  $\delta$  1.96 (s, 1H), 2.31 (s, 3H), 3.38 (s, 2H), 3.81 (s, 2H), 7.10–7.47 (m, 9H), 9.20 (s, 1H);  $m/z$  254 ( $M^+$ ).

**$p\text{-CH}_3\text{C}_6\text{H}_4\text{N(CH}_3\text{)C(=O)CH}_2\text{NHCH}_2\text{C}_6\text{H}_5$ .** Brown oil (silica gel, 50% ethyl acetate–*n*-hexane,  $R_f$  = 0.23); Anal. Found: C, 75.9; H, 7.4; N, 10.2. Calcd. for  $C_{17}H_{20}N_2O$ : C, 76.09; H, 7.51; N, 10.44%.  $^1H$  NMR (200 MHz,  $CDCl_3$ )  $\delta$  2.33 (s, 1H), 2.39 (s, 3H), 3.17 (s, 2H), 3.30 (s, 3H), 3.80 (s, 2H), 7.08–7.27 (m, 9H);  $m/z$  268 ( $M^+$ ).

### Acknowledgements

This work was supported by Korea Research Foundation Grant (KRF-2002-070-C00061).

### References

- (a) J. B. Conant and W. R. Kirner, *J. Am. Chem. Soc.*, 1924, **46**, 232; (b) A. Streitwieser, Jr., *Solvolytic Displacement Reactions*, McGraw-Hill, New York, 1962; (c) S. D. Ross, M. Finkelstein and R. C. Petersen, *J. Am. Chem. Soc.*, 1968, **90**, 6411; (d) A. Halvorsen and J. Songstad, *J. Chem. Soc., Chem. Commun.*, 1978, 327.
- (a) F. Carrion and M. J. S. Dewar, *J. Am. Chem. Soc.*, 1984, **106**, 3531; (b) R. D. Back, B. A. Coddens and G. J. Wolber, *J. Org. Chem.*, 1986, **51**, 1030; (c) T. I. Yousaf and E. S. Lewis, *J. Am. Chem. Soc.*, 1987, **109**, 6137.
- (a) T. K. Brunck and F. Weinhold, *J. Am. Chem. Soc.*, 1979, **101**, 1700; (b) A. E. Reed and L. E. Curtiss, *Chem. Rev.*, 1988, **88**, 735.
- (a) J. W. Baker, *Trans. Faraday Soc.*, 1951, **37**, 643; (b) C. A. Bunton, *Nucleophilic Substitution at a Saturated Carbon Atom*, Elsevier, New York, 1963, p. 5; (c) S. Weinstein, E. Grunwald and H. W. Jones, *J. Am. Chem. Soc.*, 1951, **73**, 2700.
- (a) M. J. S. Dewar, *The Electronic Theory of Organic Chemistry*, Oxford University Press, Oxford, 1949, p. 73; (b) D. J. McLennan and A. Pross, *J. Chem. Soc., Perkin Trans. 2*, 1984, 981.
- H. J. Koh, K. L. Han, H. W. Lee and I. Lee, *J. Org. Chem.*, 2000, **65**, 4706.
- (a) I. Lee, *Chem. Soc. Rev.*, 1990, **19**, 317; (b) I. Lee, *Adv. Phys. Org. Chem.*, 1992, **27**, 57; (c) I. Lee and H. W. Lee, *Collect. Czech. Chem. Commun.*, 1999, **64**, 1529.

- 8 C. Hansch, A. Leo and R. W. Taft, *Chem. Rev.*, 1991, **91**, 165.
- 9 L. F. Blackwell, A. Fischer, J. Miller, R. D. Topsom and J. Vaughan, *J. Chem. Soc.*, 1964, 3588.
- 10 I. Lee, S. W. Hong, H. J. Koh, Y. Lee, B.-S. Lee and H. W. Lee, *J. Org. Chem.*, 2001, **66**, 8549.
- 11 W. J. Spillane, G. Hogan, P. McGrath, J. King and C. Brack, *J. Chem. Soc., Perkin Trans. 2*, 1996, 2099.
- 12 (a) K. Fukui, *Theory of Orientation and Stereoselection*, Springer-Verlag, Berlin, 1975; (b) I. Fleming, *Frontier Orbitals and Organic Chemical Reactions*, Wiley, London, 1976.
- 13 (a) H. G. Li, C. K. Kim, B.-S. Lee, C. K. Kim, S. K. Rhee and I. Lee, *J. Am. Chem. Soc.*, 2001, **123**, 2326; (b) I. Lee, *Int. Rev. Phys. Chem.*, 2003, **22**, in press.
- 14 (a) C. K. Kim, H. G. Li, H. W. Lee, C. K. Sohn, Y. I. Chun and I. Lee, *J. Phys. Chem. A*, 2000, **104**, 4069; (b) I. Lee, C. K. Kim, H. G. Li, C. K. Sohn, C. K. Kim, H. W. Lee and B.-S. Lee, *J. Am. Chem. Soc.*, 2000, **122**, 11162.
- 15 (a) E. A. Castro, M. J. Salas and J. G. Santos, *J. Org. Chem.*, 1994, **59**, 30; (b) E. A. Castro, L. Leandro, P. Millan and J. G. Santos, *J. Org. Chem.*, 1999, **64**, 1953; (c) E. A. Castro, P. Munoz and J. G. Santos, *J. Org. Chem.*, 1999, **64**, 8298; (d) H. K. Oh, S. K. Kim, I. H. Cho, H. W. Lee and I. Lee, *J. Chem. Soc., Perkin Trans. 2*, 2000, 2306.
- 16 (a) N. D. Epiotis, W. R. Cherry, S. Shaik, R. L. Yates and F. Bernardi, *Structural Theory of Organic Chemistry*, Springer-Verlag, Berlin, 1977; (b) T. A. Albright, J. K. Burdett and M. H. Whangbo, *Orbital Interaction in Chemistry*, Wiley, New York, 1985, chps. 2 and 3.
- 17 I. Lee, H. Y. Kim, H. K. Kang and H. W. Lee, *J. Org. Chem.*, 1988, **53**, 2678.
- 18 I. Lee, Y. H. Choi and H. W. Lee, *J. Chem. Soc., Perkin Trans. 2*, 1988, 1537.
- 19 I. Lee, W. H. Lee and H. W. Lee, *J. Org. Chem.*, 1991, **56**, 4682.
- 20 K. H. Yew, H. J. Koh, H. W. Lee and I. Lee, *J. Chem. Soc., Perkin Trans. 2*, 1995, 2263.
- 21 A. K. Guha, H. W. Lee and I. Lee, *J. Org. Chem.*, 2000, **65**, 12.
- 22 H. J. Koh, H. C. Lee, H. W. Lee and I. Lee, *Bull. Korean Chem. Soc.*, 1995, **16**, 839.
- 23 T.-H. Kim, C. Huh, B.-S. Lee and I. Lee, *J. Chem. Soc., Perkin Trans. 2*, 1995, 2257.
- 24 B. C. Lee, J. H. Yoon, C. G. Lee and I. Lee, *J. Phys. Org. Chem.*, 1994, **7**, 273.
- 25 H. K. Oh, C. H. Shin and I. Lee, *J. Chem. Soc., Perkin Trans. 2*, 1995, 1169.
- 26 H. J. Koh, O. S. Kim, H. W. Lee and I. Lee, *J. Phys. Org. Chem.*, 1997, **10**, 725.
- 27 H. J. Koh, K. L. Han, H. W. Lee and I. Lee, *J. Org. Chem.*, 1998, **63**, 9834.
- 28 I. Lee, *Bull. Korean Chem. Soc.*, 1994, **15**, 985.
- 29 I. Lee, *Chem. Soc. Rev.*, 1995, **24**, 223.
- 30 I. Lee, H. J. Koh, B.-S. Lee, D. S. Sohn and B. C. Lee, *J. Chem. Soc., Perkin Trans. 2*, 1991, 1741.
- 31  $\Delta H^\ddagger$  (kcal mol<sup>-1</sup>) = 9–13 for **5** and 10–15 for **6** calculated from the second-order rate constants at 45.0, 55.0, and 65.0  $\pm$  0.1 °C when X = *p*-CH<sub>3</sub>O or *p*-Cl and Y = *p*-CH<sub>3</sub> or *p*-NO<sub>2</sub>. Activation enthalpies of Y = *p*-NO<sub>2</sub> are smaller than those of Y = *p*-CH<sub>3</sub>; ca. 1 kcal mol<sup>-1</sup> and 2–4 kcal mol<sup>-1</sup> for **5** and **6**, respectively.
- 32 M. J. Gresser and W. P. Jencks, *J. Am. Chem. Soc.*, 1977, **99**, 6970.
- 33 E. A. Castro, M. Cubillos and J. G. Santos, *J. Org. Chem.*, 1999, **64**, 6342.
- 34 H. J. Koh, K. L. Han and I. Lee, *J. Org. Chem.*, 1999, **64**, 4783.
- 35 H. K. Oh, M. H. Ku, H. W. Lee and I. Lee, *J. Org. Chem.*, 2002, **67**, 8995.
- 36 (a) E. A. Castro and C. Ureta, *J. Org. Chem.*, 1990, **55**, 1076; (b) E. A. Castro, C. A. Araneda and J. G. Santos, *J. Org. Chem.*, 1997, **62**, 126; (c) E. A. Castro, *Chem. Rev.*, 1999, **99**, 3505.
- 37 (a) A. Pross, *Adv. Phys. Org. Chem.*, 1977, **14**, 69; (b) E. Buncl and H. Wilson, *J. Chem. Educ.*, 1987, **64**, 475.
- 38 (a) I. Lee, B.-S. Lee, H. J. Koh and B. D. Chang, *Bull. Korean Chem. Soc.*, 1995, **16**, 277; (b) H. J. Koh, I. Lee and H. W. Lee, *Can. J. Chem.*, 1998, **76**, 710.
- 39 (a) A. I. Vogel, *Practical Organic Chemistry*, 5th edn., Longmans, London, 1988, p. 918; (b) S.-C. Kim and B.-M. Kwon, *Synthesis*, 1982, 795.