

1,2,4-Oxadiazole-Bearing Pyrazoles as Metabolically Stable Modulators of Store-Operated Calcium Entry

Silvio Aprile, Beatrice Riva, Irene Preet Bhela, Celia Cordero-Sanchez, Giulia Avino, Armando A. Genazzani, Marta Serafini,* and Tracey Pirali



Cite This: *ACS Med. Chem. Lett.* 2021, 12, 640–646



Read Online

ACCESS |



Metrics & More



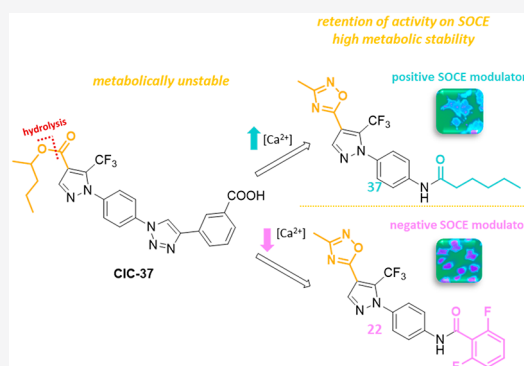
Article Recommendations



Supporting Information

ABSTRACT: Store-operated calcium entry (SOCE) is a pivotal mechanism in calcium homeostasis, and, despite still being under investigation, its dysregulation is known to be associated with severe human disorders. SOCE modulators are therefore needed both as chemical probes and as therapeutic agents. While many small molecules have been described so far, their poor properties in terms of drug-likeness have limited their translation into the clinical practice. In this work, we describe the bioisosteric replacement of the ester moiety in pyrazole derivatives with a 1,2,4-oxadiazole ring as a means to afford a class of modulators with high metabolic stability. Moreover, among our derivatives, a compound able to increase the calcium entry was identified, further enriching the library of available SOCE activators.

KEYWORDS: Drug discovery and development, Store-Operated Calcium Entry, 1,2,4-Oxadiazole, Bioisosteric replacement, CRAC channels



The ubiquitous second messenger calcium is a central regulator of a plethora of physiological processes, spanning from fertilization of oocytes to cell death, mobility, secretion, and gene expression. Infinitesimal oscillations of this ion concentration in the different cell compartments control a multitude of processes. This is the reason why every cell maintains a huge gradient between the plasma membrane or the intracellular calcium repository and the cytoplasm, with various pumps and exchangers in charge of finely regulating its levels.^{1,2} A central mechanism in calcium homeostasis is represented by the store-operated calcium entry (SOCE), *i.e.*, the influx of calcium across the plasma membrane activated by the depletion of this ion in the endoplasmic reticulum (ER).³ SOCE is mediated mainly, although not exclusively, by two protein families: STIM and Orai. STIM1 and its homologue STIM2 are single-span membrane proteins residing on the ER membrane and act as sensors of calcium levels. Orai are a family of proteins (Orai1, Orai2 and Orai3) that form the ion channels on the plasma membrane.^{4–6} When a depletion of calcium from the ER stores occurs, STIM undergoes a conformational change leading to self-association into puncta and migration near the plasma membrane. There, interaction with Orai promotes the opening of the channel and the subsequent influx of calcium. The empty ER stores are then refilled by the sarco-endoplasmic reticulum calcium ATPase (SERCA) pump.^{7,8} Due to its prominent role in encoding calcium signals, SOCE is implicated in several human disorders, including cancer,^{9,10} inflammatory bowel disease,¹¹

allergy,¹² and acute pancreatitis.^{13,14} Therefore, it is not surprising that this cellular pathway has become a promising target for the therapeutic treatment of several pathological conditions.

Over the years, many small molecules^{15–18} able to modulate SOCE have been reported. The earliest modulators are SKF-96365,^{19,20} 2-APB and its derivatives,^{21,22} and bis-(trifluoromethyl)pyrazoles compounds, initially named BTP (BTP1 (1), BTP2 (2), Figure 1),²³ followed by Pyr's (Pyr3 (3), Pyr6 (4), Pyr10 (5), Figure 1).^{24,25} Among others, GSK-7975A (6, Figure 1),²⁶ RO2959 (7, Figure 1),²⁷ and Synta66 (8, Figure 1)^{11,12} have been extensively used as chemical probes. More recently, two compounds have entered clinical development, CM4620 (9, Figure 1) for acute pancreatitis (phase II)²⁸ and PRCL-02 for psoriasis (phase II),²⁹ whose structure has not been disclosed. These are not the only SOCE inhibitors that are in human use. Indeed, a virtual screening performed on FDA-approved drugs recently unveiled that two approved drugs are also SOCE inhibitors with relevant activity at therapeutic doses,³⁰ the prodrug leflunomide (10, Figure

Received: January 18, 2021

Accepted: March 8, 2021

Published: March 10, 2021



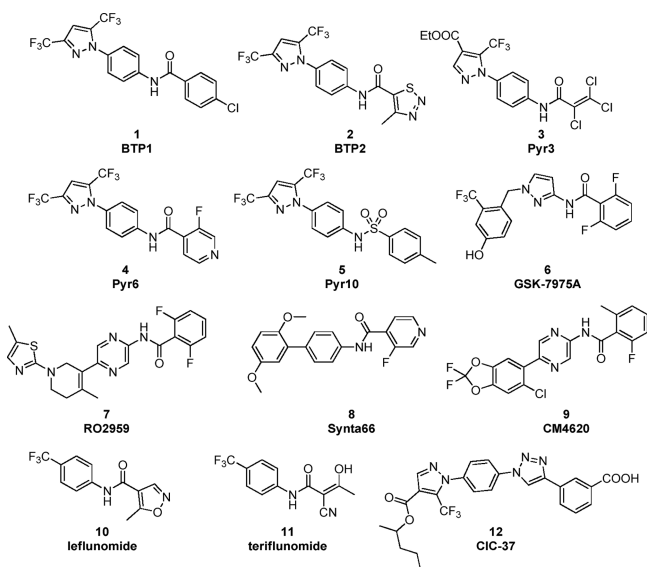


Figure 1. Structures of SOCE inhibitors reported in the literature.

1)^{31,32} and its active form teriflunomide (11, Figure 1).^{33,34} The two compounds are approved for the treatment of rheumatoid arthritis and multiple sclerosis, respectively. Teriflunomide is a dihydroorotate dehydrogenase (DHODH) inhibitor, while leflunomide is devoid of *in vitro* activity on this enzyme.

Our group of research has contributed to the development of druglike SOCE modulators by reporting pyrtiazoles, among which the most promising candidate is CIC-37 (12, Figure 1).³⁵

In contrast to other SOCE modulators, CIC-37 is a promising molecule as it displays selectivity over other calcium channels, such as TRPV1, TRPM8, and voltage-operated calcium channels.³⁵ However, the molecule is affected by poor metabolic stability, and this is attributable to the ester group, which is shared by pyrtiazoles and some of the Pyr's (3, Figure 1). Yet, this soft spot represents a fundamental portion in the pharmacophore of pyrtiazoles as its removal leads to a drop in the inhibitory activity, as previously described by our group.³⁵ Therefore, in the present contribution, starting from the structure of CIC-37 (12, Figure 1), we replaced the ester moiety with a hydrolytically stable isostere, a 1,2,4-oxadiazole.^{36,37} Moreover, in the design of this novel class, we substituted the 1,4-disubstituted 1,2,3-triazole ring of compound 12 with an amide group (Figure 2). Indeed, the

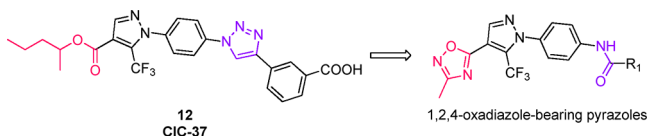
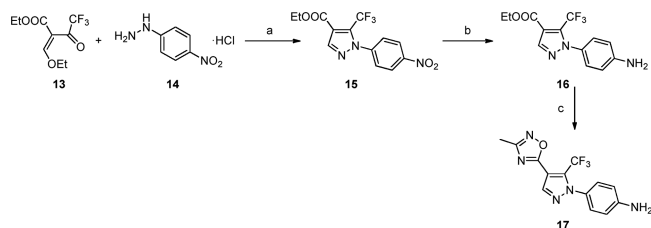


Figure 2. Design of 1,2,4-oxadiazole-bearing pyrazoles.

development of 1,2,3-triazoles is hampered by several issues, including poor aqueous solubility, limitations in the scale-up process due to the explosive nature of azides and safety concerns associated with copper catalysts.³⁸

The class of oxadiazole-bearing pyrazoles was prepared from amine 17 (Scheme 1). The synthetic route consists of three steps: after a condensation between 13 and 14 and a reduction of the aromatic nitro group, intermediate 16 was obtained.

Scheme 1. Preparation of Amine 17^a

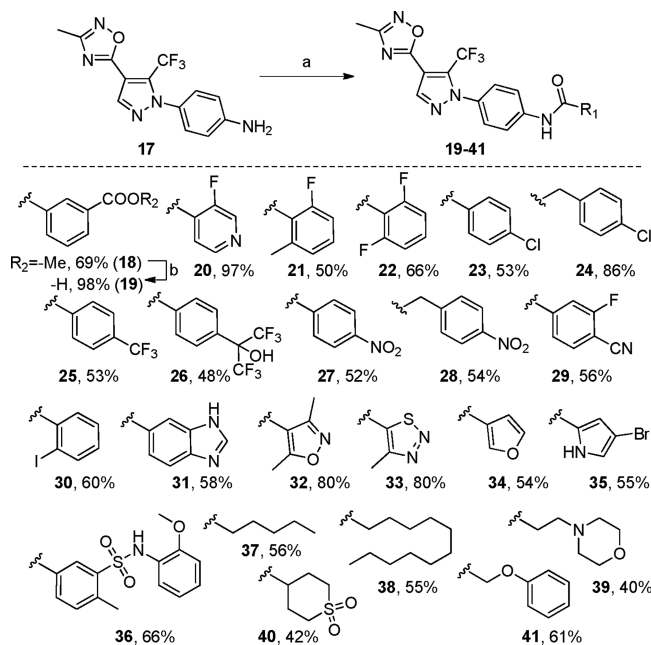


^aReagents and conditions: (a) DMF, reflux, 2 h, 96%. (b) H₂, 5% Pd/C, EtOAc, rt, 2 h, 94%. (c) NaH 60%, *N*-hydroxyacetamide, dry THF, 0 °C to rt, 4 h, 76%.

Then, the ethyl ester reacted with *N*-hydroxyacetamide to afford amine 17.

Starting from this amine, a structure–activity relationship (SAR) study was undertaken. To this aim, eight coupling reactions were performed (19–23, 32–33, and 36, Scheme 2)

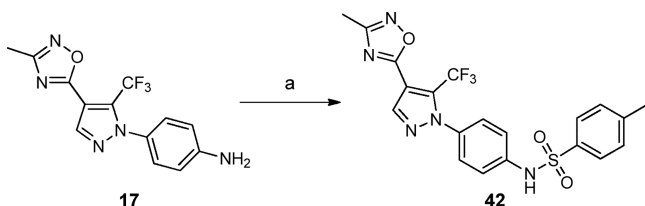
Scheme 2. Preparation of Oxadiazole-Bearing Pyrazoles 19–41^a



^aReagents and conditions: (a) PyBOP, DIPEA, dry CH₂Cl₂, rt, 16–42 h, 40–97%. (b) NaOH, H₂O, THF, rt, 5 h, 98%.

based on the prototype substructures displayed by reported SOCE inhibitors, including BTP1 (1, Figure 1), BTP2 (2, Figure 1), Pyr10 (5, Figure 1), GSK-7975A (6, Figure 1), Synta66 (8, Figure 1), CM4620 (9, Figure 1), leflunomide (10), and CIC-37 (12, Figure 1). Compound 42, whose substructure mimics Pyr10 (5, Figure 1), was synthesized according to Scheme 3, from amine 17 and tosyl chloride (TsCl). Moreover, 15 additional coupling reactions were performed (24–31, 34–35, and 37–41, Scheme 2) exploiting different carboxylic acids and further expanding the SAR study.

With this approach, 24 oxadiazole-bearing pyrazoles were synthesized and tested in human embryonic kidney (HEK) cells for SOCE inhibition. To this aim, intracellular Ca²⁺ stores of HEK cells were emptied with *t*-butylhydroquinone (*t*BHQ, 50 μM) in the presence of the compounds at 10 μM

Scheme 3. Synthesis of compound 42^a

^aReagents and conditions: (a) TsCl, pyridine, dry CH₂Cl₂, 0 °C to rt, 5 h, 45%.

concentration. After 600 s, Ca²⁺ was added and intracellular levels were measured in fluorescence microscopy with the calcium dye Fura-2. As shown in Table 1, 8 compounds out of 24 were able to reduce calcium entry by more than 50% compared to control. In particular, the substructures that provided the highest inhibitory activity were those derived from GSK-7975A (**22**, % of SOCE residual activity: 38.6%), BTP1 (**23**, 40.8%), leflunomide (**32**, 33.2%), Pyr2 (**33**, 46.5%), and Pyr10 (**42**, 47.6%). Also, compounds **27** (40.8%) and **29** (49.6%), displaying an electron-withdrawing group in para position on the aromatic ring, or **31** (47.4%) in which the aromatic ring is fused with an imidazole, afforded a good inhibitory activity. For these compounds, the cell viability was therefore evaluated. An MTT assay was performed and the compounds that affected cell viability by more than 25% at 10 μM were discarded (**23**, **31**, and **33**). Notably, the remaining five compounds (**22**, **27**, **29**, **32**, and **42**) were not cytotoxic

under these conditions. According to both activity and cytotoxicity, for the selected five compounds, the representative traces are depicted in Figure 3.

Moreover, for these selected compounds, IC₅₀ values were calculated and are reported in Table 1. The most potent molecule was **22**, with an IC₅₀ value of 3.1 μM.

Surprisingly, compound **37**, in which the side chain is represented by a linear aliphatic substructure, afforded an increase in calcium entry, with a percentage of SOCE activity of 146.2% compared to the control. More in detail, the compound, tested at the concentration of 10 μM, significantly increased the area under the curve (AUC) of calcium entry and the peak amplitude, without affecting the slope (Figure 4). We also investigated whether **37** required the triggered opening of the Orai channel to elicit its effect. To do this, we monitored intracellular Ca²⁺ in resting cells in the presence of extracellular Ca²⁺ and we observed that the compound did not elicit any significant calcium entry at 10 μM compared to control in the 300 s of observation, suggesting that **37** is a potentiator/enhancer of SOCE. The same effect was also evident at 3 (118.2%) and 1 μM (116.7%) but was not detected at concentrations above 10. In particular, at 30 and 100 μM, **37** acts as weak SOCE inhibitor, with a percentage of residual activity of about 70%.

The identification of a SOCE enhancer among a class of inhibitors has been reported in three previously published classes of modulators, with two of them described by us and represented by pyrtriazoles (AL-2T (**43**), NM-3G (**44**), Figure

Table 1. Oxadiazole-Bearing Pyrazoles and Their Activity on SOCE, IC₅₀ Values and Cytotoxicity in HEK Cells^a

compd, yield (%)	% SOCE residual activity (10 μM)	% viability (10 μM)	IC ₅₀ (μM)	MLS9 ^b /MLM ^c stability (residual substrate)
Pyr3 (3)	8.9 ± 0.6	28.6 ± 0.5	0.5 ± 0.1	43% ^b
Synta66 (8)	9.2 ± 1.7	75.8 ± 8.0	0.2 ± 0.3	15% ^c
CIC-37 (12)	17.5 ± 1.6	93.6 ± 4.6	4.4 ± 1.2	74% ^b
19 , 69%	77.2 ± 3.7			
20 , 97%	53.6 ± 0.9			
21 , 50%	56.7 ± 1.3			
22 , 66%	38.6 ± 4.3	95.6 ± 8.5	3.1 ± 1.4	>99% ^b
23 , 53%	40.8 ± 3.6	72.9 ± 11.7		
24 , 86%	121.1 ± 2.2			
25 , 53%	110.0 ± 5.9			
26 , 48%	109.0 ± 6.5			
27 , 52%	40.8 ± 6.9	80.2 ± 7.4	5.5 ± 0.8	>99% ^b
28 , 54%	107.9 ± 3.9			
29 , 56%	49.6 ± 6.5	100.8 ± 6.7	9.7 ± 2.3	73% ^b
30 , 60%	53.2 ± 3.9			
31 , 58%	47.4 ± 1.0	56.5 ± 2.5		
32 , 80%	33.2 ± 1.9	77.7 ± 4.4	9.6 ± 2.5	99% ^b
33 , 80%	46.5 ± 2.8	59.1 ± 6.3		
34 , 54%	61.1 ± 3.9			
35 , 55%	69.8 ± 2.9			
36 , 66%	59.9 ± 4.2			
37 , 56%	146.2 ± 4.5	88. Five ± 2.9		91% ^b
38 , 55%	53.8 ± 4.4			
39 , 40%	95.9 ± 6.2			
40 , 42%	87.5 ± 3.8			
41 , 61%	63.6 ± 3.9			
42 , 45%	47.6 ± 4.2	79.4 ± 4.2	9.5 ± 1.7	76% ^b

^aBiological data were derived for three independent experiments, and numbers represent mean ± standard error of mean (SEM). ^bResidual substrates were determined in the MLS9 fraction after 1 h of incubation. ^cResidual substrates were determined in mouse liver microsomes (MLM) as previously described.³⁹

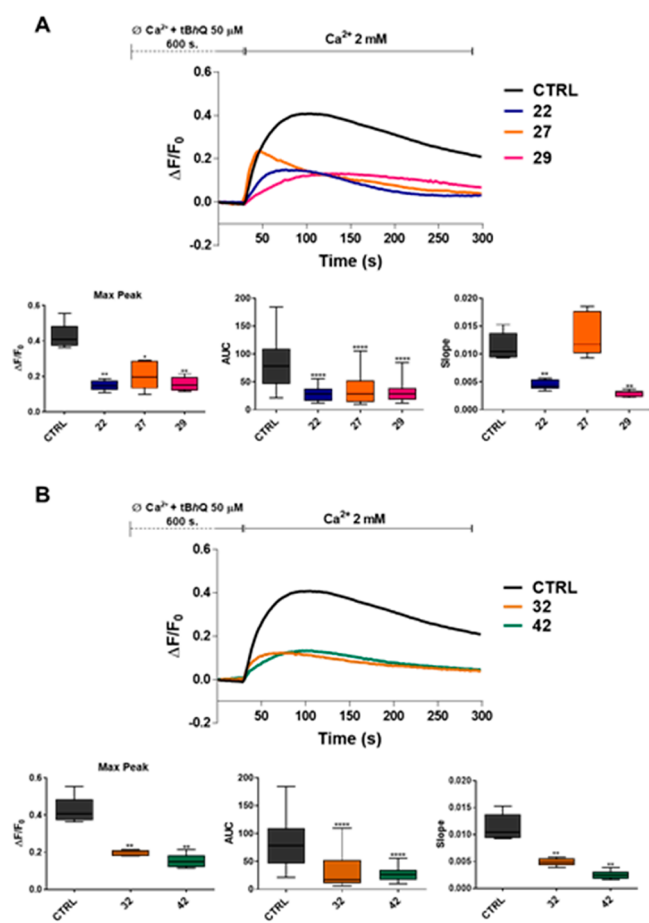


Figure 3. Effect of compounds 22, 27, 29, 32, and 42 on SOCE. (A) Traces of SOCE in the presence or absence of compounds 22, 27, and 29 (10 μ M). Traces are the average of 200 cells from three independent experiments (top panel). Evaluation of peak amplitude, area under the curve (AUC), and slope of the Ca^{2+} -rise in the absence or presence of 22, 27, and 29. The graph shows the median and interquartile range (IQR) of the peak amplitude, AUC, and slope of the Ca^{2+} -rise. Mann–Whitney U test of compound vs control (** $p \leq 0.0043$; **** $p \leq 0.0001$; bottom panel). (B) Traces of SOCE in the presence or absence of compounds 32 and 42 (10 μ M). Traces are the average of 200 cells from three independent experiments (top panel). Evaluation of peak amplitude, AUC, and slope of the Ca^{2+} -rise in the absence or presence of 32 and 42. The graph shows the median and IQR of the peak amplitude, AUC, and slope of the Ca^{2+} -rise. Mann–Whitney U test of compound vs control (** $p \leq 0.0069$; **** $p \leq 0.0001$; bottom panel).

5),³⁵ and biphenyl triazoles (compound 45, Figure 5)³⁹ and one reported in the literature (IA65 (46), Figure 5).⁴⁰ A similar behavior is also shared by 2-APB (47), a well-known inhibitor of IP3 receptors and TRP channels. The compound is a SOCE modifier in Orai1- and Orai3-expressing cells, acting as SOCE enhancer at low concentrations, while high concentrations induce a transient increase followed by complete inhibition.⁴¹ Although a precise rationale can not be extrapolated from the scaffolds of the enhancers, in our experience it often occurs that a minimal structural modification in a class of compounds designed to negatively modulate SOCE is capable of turning an inhibitor into a molecule able to increase calcium entry.

The five selected inhibitors (22, 27, 29, 32, and 42) and the identified SOCE enhancer (37) were then evaluated for their

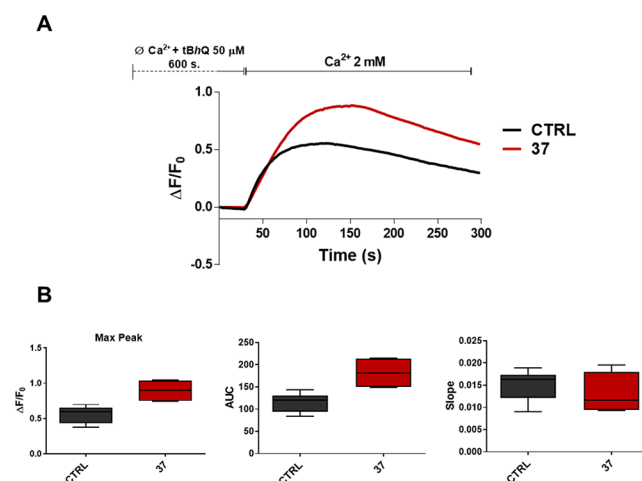


Figure 4. Effect of 37 on SOCE. (A) Traces of SOCE in the presence or absence of 37 at a concentration of 10 μ M. Traces are the average of 200 cells from three independent experiments. (B) Evaluation of peak amplitude, AUC, and slope of the Ca^{2+} -rise in the absence or presence of 37. The graph shows the median and IQR of the peak amplitude, AUC, and slope of the Ca^{2+} -rise. Mann–Whitney U test of compound vs control (** $p \leq 0.002$).

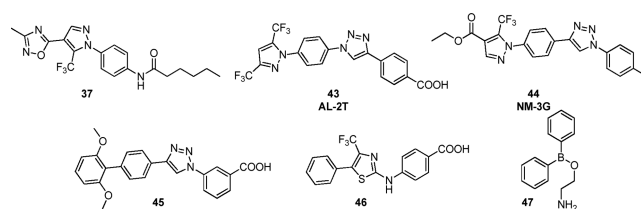


Figure 5. Structures of positive modulators of SOCE reported in the literature.

in vitro hepatic metabolic stability. To this aim, the candidates were incubated in MLS9 fraction supplied with NADPH and the residual substrate was measured after 1 h. Under these conditions, the oxadiazole-bearing pyrazoles resulted overall metabolically stable, with only two compounds affording a residual substrate lower than 80% and the remaining molecules higher than 90% after incubation (Table 1 and Supporting Information). In contrast, Pyr3 and CIC-37, which suffered from hydrolysis of the ester function, provided a residual substrate of 43 and 74%, respectively (Table 1).³⁵ Similarly, the residual substrate of Synta66 in MLM is of 15%, due to an important hydrolysis of the amide group, absent in our class (Table 1).³⁹

We have previously reported CIC-37 that had as its main advantage over other modulators the absence of cytotoxicity but had metabolic stability as its Achilles' heel. The most potent compound in the present contribution, 22, is similarly not cytotoxic but shows a major improvement in *in vitro* metabolic stability (Table 1). Compared to the reference compounds of the literature (Pyr3 and Synta66), therefore, our newest compound does not affect cellular viability, displays a similar efficacy, but shows a significantly improved metabolic stability (Table 1).

In our SAR study, a SOCE enhancer has been identified, adding this compound to the previously reported pool of positive modulators. Due to poor available crystallographic data, the binding partner of the reported SOCE modulators has not been conclusively ascertained, but the presence of

activators in our series strongly suggests that it is the Orai channel. The interaction of SOCE modulators with the ion channel is also supported by a recently published article in which, through computational approaches, a docking pose of Synta66 in the Orai channel has been proposed.⁴² Moreover, azopyrazole-derived SOCE inhibitors have been recently reported as the first photoswitchable SOCE modulators able to induce the activation of Orai using light, further supporting the hypothesis that our compounds interact directly with this ion channel.⁴³

On one hand, SOCE inhibitors are currently being investigated for their potential therapeutic applications and have progressed in clinical trials; on the other hand, activators are still in their infancy, representing both chemical probes to better elucidate SOCE biology and hit compounds for the development of agents able to boost the immune system in loss-of-function mutations associated with severe combined immunodeficiency (SCID)-like disorders.^{44,45}

■ ASSOCIATED CONTENT

SI Supporting Information

The Supporting Information is available free of charge at <https://pubs.acs.org/doi/10.1021/acsmmedchemlett.1c00034>.

Synthesis and characterization of compounds; in vitro metabolism and purity of lead compounds; biology methods (cell cultures, MTT assay, and calcium imaging) (PDF)

■ AUTHOR INFORMATION

Corresponding Author

Marta Serafini – Department of Pharmaceutical Sciences, Università degli Studi del Piemonte Orientale, 28100 Novara, Italy; orcid.org/0000-0002-5305-8359; Phone: +39 3495338810; Email: marta.serafini@uniupo.it

Authors

Silvio Aprile – Department of Pharmaceutical Sciences, Università degli Studi del Piemonte Orientale, 28100 Novara, Italy; orcid.org/0000-0003-4804-9543

Beatrice Riva – Department of Pharmaceutical Sciences, Università degli Studi del Piemonte Orientale, 28100 Novara, Italy; ChemICare S.r.l., Enne3, 28100 Novara, Italy

Irene Preet Bhela – Department of Pharmaceutical Sciences, Università degli Studi del Piemonte Orientale, 28100 Novara, Italy

Celia Cordero-Sanchez – Department of Pharmaceutical Sciences, Università degli Studi del Piemonte Orientale, 28100 Novara, Italy

Giulia Avino – Department of Pharmaceutical Sciences, Università degli Studi di Trieste, 34127 Trieste, Italy

Armando A. Genazzani – Department of Pharmaceutical Sciences, Università degli Studi del Piemonte Orientale, 28100 Novara, Italy; orcid.org/0000-0003-1923-7430

Tracey Pirali – Department of Pharmaceutical Sciences, Università degli Studi del Piemonte Orientale, 28100 Novara, Italy; ChemICare S.r.l., Enne3, 28100 Novara, Italy; orcid.org/0000-0003-3936-4787

Complete contact information is available at: <https://pubs.acs.org/doi/10.1021/acsmmedchemlett.1c00034>

Author Contributions

The manuscript was written through contributions of all authors. All authors have given approval to the final version of the manuscript.

Notes

The authors declare the following competing financial interest(s): B.R. and T.P. are co-founders of ChemICare S.r.l., a start-up that develops SOCE modulators. The other authors declare that they do not have competing interests.

■ ACKNOWLEDGMENTS

Marta Serafini is supported by Fondazione AIRC (Associazione Italiana per la Ricerca sul Cancro) fellowship for Abroad (Rif. 25278). This work was partly supported by a Telethon grant to Armando A. Genazzani (GGP19110).

■ ABBREVIATIONS

AUC, area under the curve; DHODH, dihydroorotate dehydrogenase; DIPEA, *N,N*-diisopropylethylamine; DMF, *N,N*-dimethylformamide; ER, endoplasmic reticulum; EtOAc, ethyl acetate; HEK, human embryonic kidney; IQR, interquartile range; MLM, mouse liver microsomes; MLS9, mouse liver S9; PyBOP, benzotriazol-1-yloxytripyrrolidino-phosphonium hexafluorophosphate; SAR, structure–activity relationship; SEM, standard error of mean; SERCA, sarco-endoplasmic reticulum calcium ATPase; SCID, severe combined immunodeficiency; SOCE, Store-Operated Calcium Entry; THF, tetrahydrofuran; TsCl, tosyl chloride; tBHQ, *t*-butylhydroquinone

■ REFERENCES

- (1) Carafoli, E.; Santella, L.; Branca, D.; Brini, M. Generation, control, and processing of cellular calcium signals. *Crit. Rev. Biochem. Mol. Biol.* **2001**, *36* (2), 107–260.
- (2) Berridge, M. J.; Bootman, M. D.; Roderick, H. L. Calcium signalling: dynamics, homeostasis and remodeling. *Nat. Rev. Mol. Cell Biol.* **2003**, *4* (7), 517–529.
- (3) Putney, J. W., Jr A model for receptor-regulated calcium entry. *Cell Calcium* **1986**, *7*, 1–12.
- (4) Putney, J. W. Origins of the concept of store-operated calcium entry. *Front. Biosci., Scholar Ed.* **2011**, *S3*, 980–984.
- (5) Putney, J. W. The physiological function of store-operated calcium entry. *Neurochem. Res.* **2011**, *36* (7), 1157–1165.
- (6) Berra-Ero, A.; Woodard, G. E.; Rosado, J. A. Orais and STIMs: physiological mechanisms and disease. *J. Cell. Mol. Med.* **2012**, *16* (3), 407–424.
- (7) Lewis, R. S. The molecular choreography of a store-operated calcium channel. *Nature* **2007**, *446* (7133), 284–287.
- (8) Darbellay, B.; Arnaudeau, S.; König, S.; Jousset, H.; Bader, C.; Demaurex, N.; Bernheim, L. STIM1- and Orai1-dependent store-operated calcium entry regulates human myoblast differentiation. *J. Biol. Chem.* **2009**, *284* (8), 5370–5380.
- (9) Xie, J.; Pan, H.; Yao, J.; Zhou, Y.; Han, W. SOCE and cancer: recent progress and new perspectives. *Int. J. Cancer* **2016**, *138* (9), 2067–2077.
- (10) Guéguinou, M.; Harnois, T.; Crottes, D.; Uguen, A.; Deliot, N.; Gambade, A.; Chantôme, A.; Haelters, J. P.; Jaffrès, P. A.; Jourdan, M. L.; Weber, G.; Soriani, O.; Bougnoux, P.; Mignen, O.; Bourmeyster, N.; Constantin, B.; Lecomte, T.; Vandier, C.; Potier-Cartereau, M. SK3/TRPC1/Orai1 complex regulates SOCE-dependent colon cancer cell migration: a novel opportunity to modulate anti-EGFR mAb action by the alkyl-lipid Ohmlin. *Oncotarget* **2016**, *7* (24), 36168–36184.
- (11) Di Sabatino, A.; Rovedatti, L.; Kaur, R.; Spencer, J. P.; Brown, J. T.; Morisset, V. D.; Biancheri, P.; Leakey, N. A. B.; Wilde, J. I.; Scott,

- L.; Corazza, G. R.; Lee, K.; Sengupta, N.; Knowles, C. H.; Gunthorpe, M. J.; McLean, P. G.; MacDonald, T. T.; Kruidenier, L. Targeting gut T cell Ca^{2+} release-activated Ca^{2+} channels inhibits T cell cytokine production and T-box transcription factor T-bet in inflammatory bowel disease. *J. Immunol.* **2009**, *183* (5), 3454–3462.
- (12) Ng, S. W.; di Capite, J.; Singaravelu, K.; Parekh, A. B. Sustained activation of the tyrosine kinase Syk by antigen in mast cells requires local Ca^{2+} influx through Ca^{2+} release-activated Ca^{2+} channels. *J. Biol. Chem.* **2008**, *283* (46), 31348–31355.
- (13) Wen, L.; Voronina, S.; Javed, M. A.; Awais, M.; Szatmary, P.; Latawiec, D.; Chvanov, M.; Collier, D.; Huang, W.; Barrett, J.; Begg, M.; Stauderman, K.; Roos, J.; Grigoryev, S.; Ramos, S.; Rogers, E.; Whitten, J.; Velicelebi, G.; Dunn, M.; Tepikin, A. V.; Criddle, D. N.; Sutton, R. Inhibitors of ORAI1 prevent cytosolic calcium-associated injury of human pancreatic acinar cells and acute pancreatitis in 3 mouse models. *Gastroenterology* **2015**, *149* (2), 481–492.
- (14) Gerasimenko, J. V.; Gryshchenko, O.; Ferdek, P. E.; Stapleton, E.; Hébert, T. O. G.; Bychkova, S.; Peng, S.; Begg, M.; Gerasimenko, O. V.; Petersen, O. H. Ca^{2+} release-activated Ca^{2+} channel blockade as a potential tool in antipain therapy. *Proc. Natl. Acad. Sci. U. S. A.* **2013**, *110* (32), 13186–13191.
- (15) Stauderman, K. A. CRAC channels as targets for drug discovery and development. *Cell Calcium* **2018**, *74*, 147–159.
- (16) Tian, C.; Du, L.; Zhou, Y.; Li, M. Store-operated CRAC channel inhibitors: opportunities and challenges. *Future Med. Chem.* **2016**, *8* (7), 817–832.
- (17) Pevarello, P.; Cainarca, S.; Liberati, C.; Tarroni, P.; Piscitelli, F.; Severi, E. Ca^{2+} release-activated Ca^{2+} channel inhibitors. *Pharm. Pat. Anal.* **2014**, *3* (2), 171–182.
- (18) Sweeney, Z. K.; Minatti, A.; Button, D. C.; Patrick, S. Small-molecule inhibitors of store-operated calcium entry. *ChemMedChem* **2009**, *4* (5), 706–718.
- (19) Singh, A.; Hildebrand, M. E.; Garcia, E.; Snutch, T. P. The transient receptor potential channel antagonist SKF96365 is a potent blocker of low-voltage-activated T-type calcium channels. *Br. J. Pharmacol.* **2010**, *160* (6), 1464–1475.
- (20) Merritt, J. E.; Armstrong, W. P.; Benham, C. D.; Hallam, T. J.; Jacob, R.; Jaxa-Chamiec, A.; Leigh, B. K.; McCarthy, S. A.; Moores, K. E.; Rink, T. J. SKF 96365, a novel inhibitor of receptor-mediated calcium entry. *Biochem. J.* **1990**, *271* (2), 515–522.
- (21) Bootman, M. D.; Collins, T. J.; Mackenzie, L.; Roderick, H. L.; Berridge, M. J.; Peppiatt, C. M. 2-aminoethoxydiphenyl borate (2-APB) is a reliable blocker of store-operated Ca^{2+} entry but an inconsistent inhibitor of InsP_3 -induced Ca^{2+} release. *FASEB J.* **2002**, *16* (10), 1145–1150.
- (22) Goto, J.; Suzuki, A. Z.; Ozaki, S.; Matsumoto, N.; Nakamura, T.; Ebisui, E.; Fleig, A.; Penner, R.; Mikoshiba, K. Two novel 2-aminoethyl diphenylborinate (2-APB) analogues differentially activate and inhibit store-operated Ca^{2+} entry via STIM proteins. *Cell Calcium* **2010**, *47* (1), 1–10.
- (23) Djuric, S. W.; BaMaung, N. Y.; Basha, A.; Liu, H.; Luly, J. R.; Madar, D. J.; Sciotti, R. J.; Tu, N. P.; Wagenaar, F. L.; Wiedeman, P. E.; Zhou, X.; Ballaron, S.; Bauch, J.; Chen, Y. W.; Chiou, X. G.; Fey, T.; Gauvin, D.; Gubbins, E.; Hsieh, G. C.; Marsh, K. C.; Mollison, K. W.; Pong, M.; Shaughnessy, T. K.; Sheets, M. P.; Smith, M.; Trevillyan, J. M.; Warrior, U.; Wegner, C. D.; Carter, G. W. 3,5-Bis(trifluoromethyl)pyrazoles: a novel class of NFAT transcription factor regulator. *J. Med. Chem.* **2000**, *43* (16), 2975–2981.
- (24) Schleifer, H.; Doleschal, B.; Lichtenegger, M.; Oppenrieder, R.; Derler, I.; Frischau, I.; Glasnov, T. N.; Kappe, C. O.; Romanin, C.; Groschner, K. Novel pyrazole compounds for pharmacological discrimination between receptor-operated and store-operated Ca^{2+} entry pathways. *Br. J. Pharmacol.* **2012**, *167* (8), 1712–1722.
- (25) Law, M.; Morales, J. L.; Motttram, L. F.; Iyer, A.; Peterson, B. R.; August, A. Structural requirements for the inhibition of calcium mobilization and mast cell activation by the pyrazole derivative BTP2. *Int. J. Biochem. Cell Biol.* **2011**, *43* (8), 1228–1239.
- (26) Derler, I.; Schindl, R.; Fritsch, R.; Heftberger, P.; Riedl, M. C.; Begg, M.; House, D.; Romanin, C. The action of selective CRAC channel blockers is affected by the Orai pore geometry. *Cell Calcium* **2013**, *53* (2), 139–151.
- (27) Chen, G.; Panicker, S.; Lau, K. Y.; Apparsundaram, S.; Patel, V. A.; Chen, S. L.; Soto, R.; Jung, J. K. C.; Ravindran, P.; Okuhara, D.; Bohnert, G.; Che, Q.; Rao, P. E.; Allard, J. D.; Badi, L.; Bitter, H. M.; Nunn, P. A.; Narula, S. K.; DeMartino, J. A. Characterization of a novel CRAC inhibitor that potently blocks human T cell activation and effector functions. *Mol. Immunol.* **2013**, *54* (3–4), 355–367.
- (28) (a) CM4620 injectable emulsion versus supportive care in patients with acute pancreatitis and SIRS. Status: completed. ClinicalTrials.gov Identifier: NCT03401190. <https://www.clinicaltrials.gov/ct2/show/NCT03401190?term=NCT03401190=2=1>. Last update: May 3, 2019 (accessed 2020-11-04). (b) Study of CM4620 to reduce the severity of pancreatitis due to asparaginase. Status: recruiting. ClinicalTrials.gov Identifier: NCT04195347. <https://www.clinicaltrials.gov/ct2/show/NCT04195347?term=NCT04195347=2=1>. Last update: September 10, 2020 (accessed 2020-11-04).
- (29) A study of PRCL-02 in moderate to severe chronic plaque psoriasis. Status: completed, has results. ClinicalTrials.gov Identifier: NCT03614078. <https://www.clinicaltrials.gov/ct2/show/NCT03614078?term=NCT03614078=2=1>. Last update: March 30, 2020 (accessed 2020-11-04).
- (30) Rahman, S.; Rahman, R. Unveiling some FDA-approved drugs as inhibitors of the store-operated Ca^{2+} entry pathway. *Sci. Rep.* **2017**, *7* (1), 12881–12893.
- (31) Breedveld, F. C.; Dayer, J. M. Leflunomide: mode of action in the treatment of rheumatoid arthritis. *Ann. Rheum. Dis.* **2000**, *59*, 841–849.
- (32) Schattenkirchner, M. The use of leflunomide in the treatment of rheumatoid arthritis: an experimental and clinical review. *Immunopharmacology* **2000**, *47* (2–3), 291–298.
- (33) Palmer, A. M. Teriflunomide, an inhibitor of dihydroorotate dehydrogenase for the potential oral treatment of multiple sclerosis. *Curr. Opin. Invest. Drugs* **2010**, *11* (11), 1313–1323.
- (34) Davis, J. P.; Cain, G. A.; Pitts, W. J.; Magolda, R. L.; Copeland, R. A. The immunosuppressive metabolite of leflunomide is a potent inhibitor of human dihydroorotate dehydrogenase. *Biochemistry* **1996**, *35* (4), 1270–1273.
- (35) (a) Riva, B.; Griglio, A.; Serafini, M.; Cordero-Sanchez, C.; Aprile, S.; Di Paola, R.; Gugliandolo, E.; Alansary, D.; Biocotino, I.; Lim, D.; Grosa, G.; Galli, U.; Niemeyer, B.; Sorba, G.; Canonico, P. L.; Cuzzocrea, S.; Genazzani, A. A.; Piralì, T. Pyrazoles, a novel class of store-operated calcium entry modulators: discovery, biological profiling, and in vivo proof-of-concept efficacy in acute pancreatitis. *J. Med. Chem.* **2018**, *61* (21), 9756–9783. (b) Piralì, T.; Riva, B.; Genazzani, A. A. Modulators of SOCE, compositions and use thereof. W.O. Patent WO2012/414, December 14, 2017.
- (36) Boström, J.; Hogner, A.; Llinàs, A.; Wellner, E.; Plowright, A. T. Oxadiazoles in medicinal chemistry. *J. Med. Chem.* **2012**, *55* (5), 1817–1830.
- (37) Goldberg, K.; Groombridge, S.; Hudson, J.; Leach, A. G.; MacFaul, P. A.; Pickup, A.; Poultney, R.; Scott, J. S.; Svensson, P. H.; Sweeney, J. Oxadiazole isomers: all bioisosteres are not created equal. *MedChemComm* **2012**, *3*, 600–604.
- (38) Serafini, M.; Piralì, T.; Tron, G. C. Click 1,2,3-triazoles in drug discovery and development: from the flask to the clinic? *Adv. Heterocycl. Chem.* **2020**, DOI: 10.1016/bs.aihch.2020.10.001..
- (39) Serafini, M.; Cordero-Sanchez, C.; Di Paola, R.; Bhela, I. P.; Aprile, S.; Purghè, B.; Fusco, F.; Cuzzocrea, S.; Genazzani, A. A.; Riva, B.; Piralì, T. Store-operated calcium entry as a therapeutic target in acute pancreatitis: discovery and development of drug-like SOCE inhibitors. *J. Med. Chem.* **2020**, *63* (23), 14761–14779.
- (40) Azimi, I.; Stevenson, R. J.; Zhang, X.; Meizoso-Huesca, A.; Xin, P.; Johnson, M.; Flanagan, J. U.; Chalmers, S. B.; Yoast, R. E.; Kapure, J. S.; Ross, B. P.; Vetter, I.; Ashton, M. R.; Launikonis, B. S.; Denny, W. A.; Trebak, M.; Monteith, G. R. A new selective pharmacological enhancer of the Orai1 Ca^{2+} channel reveals roles for Orai1 in smooth

and skeletal muscle functions. *ACS Pharmacol. Transl. Sci.* **2020**, *3* (1), 135–147.

(41) Motiani, R. K.; Abdullaev, I. F.; Trebak, M. A novel native store-operated calcium channel encoded by Orai3: selective requirement of Orai3 versus Orai1 in estrogen receptor-positive versus estrogen receptor-negative breast cancer cells. *J. Biol. Chem.* **2010**, *285* (25), 19173–19183.

(42) Waldherr, L.; Tiffner, A.; Mishra, D.; Sallinger, M.; Schober, R.; Frischauf, I.; Schmidt, T.; Handl, V.; Sagmeister, P.; Köckinger, M.; Derler, I.; Üçal, M.; Bonhenry, D.; Patz, S.; Schindl, R. Blockage of Store-Operated Ca^{2+} Influx by Synta66 is Mediated by Direct Inhibition of the Ca^{2+} Selective Orai1 Pore. *Cancers* **2020**, *12* (10), 2876–2895.

(43) Yang, X.; Ma, G.; Zheng, S.; Qin, X.; Li, X.; Du, L.; Wang, Y.; Zhou, Y.; Li, M. Optical control of CRAC channels using photoswitchable azopyrazoles. *J. Am. Chem. Soc.* **2020**, *142* (20), 9460–9470.

(44) McCarl, C. A.; Picard, C.; Khalil, S.; Kawasaki, T.; Rother, J.; Papolos, A.; Kutok, J.; Hivroz, C.; Ledest, F.; Plogmann, K.; Ehl, S.; Notheis, G.; Albert, M. H.; Belohradsky, B. H.; Kirschner, J.; Rao, A.; Fischer, A.; Feske, S. ORAI1 deficiency and lack of store-operated Ca^{2+} entry cause immunodeficiency, myopathy, and ectodermal dysplasia. *J. Allergy Clin. Immunol.* **2009**, *124*, 1311–1318.

(45) Picard, C.; McCarl, C. A.; Papolos, A.; Khalil, S.; Luthy, K.; Hivroz, C.; LeDeist, F.; Rieux-Laucat, F.; Rechavi, G.; Rao, A.; Fischer, A.; Feske, S. STIM1 mutation associated with a syndrome of immunodeficiency and autoimmunity. *N. Engl. J. Med.* **2009**, *360*, 1971–1980.