

Rhodium-Catalyzed [2+2+2] Cycloadditions of Diynes with Morita–Baylis–Hillman Adducts: A Stereoselective Entry to Densely Functionalized Cyclohexadiene Scaffolds

Martí Fernández,^a Magda Parera,^a Teodor Parella,^b Agustí Lledó,^a Jean Le Bras,^c Jacques Muzart,^c Anna Pla-Quintana,^{a,*} and Anna Roglans^{a,*}

^a Institut de Química Computacional i Catàlisi (IQCC) and Departament de Química, Universitat de Girona, Campus de Montilivi, s/n, 17071 Girona, Catalonia, Spain

Fax: (+34)-972-41-8150; phone: (+34)-972-41-8275; e-mail: anna.pla@udg.edu or anna.roglans@udg.edu

^b Servei de Ressonància Magnètica Nuclear, Universitat Autònoma de Barcelona, 08193 Cerdanyola, Catalonia, Spain

^c Institut de Chimie Moléculaire de Reims, UMR 7312 CNRS – Université de Reims Champagne-Ardenne, B.P. 1039, 51687 Reims Cedex 2, France

Received: January 11, 2016; Revised: February 23, 2016; Published online: April 27, 2016



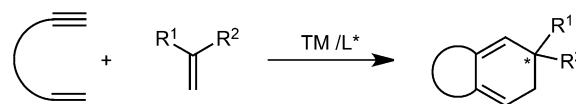
Supporting information for this article is available on the WWW under <http://dx.doi.org/10.1002/adsc.201600039>.

Abstract: A rhodium-catalyzed asymmetric synthesis of 5,5-disubstituted cyclohexa-1,3-dienes has been achieved by [2+2+2] cycloaddition reactions between diynes and Morita–Baylis–Hillman (M-B-H) adducts as unsaturated substrates. Products containing two adjacent chiral centres (quaternary and tertiary, respectively) were obtained with complete diastereoselectivity and high enantioselectivity (84–97%) through a kinetic resolution of the M-B-H adduct. Furthermore, these highly substituted cyclohexadienes reacted with dienophiles to afford the corresponding Diels–Alder cycloadducts in good yields.

Keywords: cycloaddition; diastereoselectivity; kinetic resolution; Morita–Baylis–Hillman adducts; rhodium

Opposite enantiomers of chiral compounds often display disparate bioactivity profiles. In particular, the introduction of quaternary stereocentres in a molecule constitutes an efficient strategy to complement the chiral three-dimensional space of biological receptors. This approach has long been recognized by medicinal chemists but is not straightforward from a synthetic point of view. In fact, all current marketed drugs of this type derive from natural products already containing the required quaternary stereocentres. Indeed, the formation of all-carbon quaternary stereocentres represents one of the most difficult contemporary challenges in synthetic organic chemistry since the creation of such centres is hampered by steric repul-

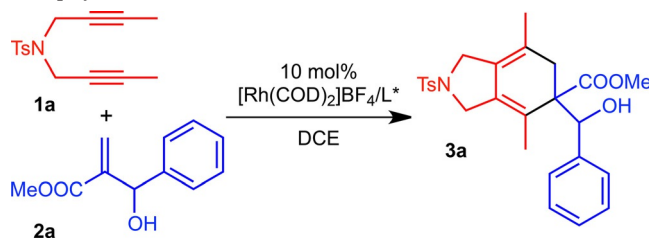
sion between the carbon substituents.^[1] The transition metal-catalyzed [2+2+2] cycloaddition reaction of unsaturated motifs is a well-established and atom-economical protocol for the construction of six-membered ring systems^[2] and various substrates have been used in this reaction, including alkenes.^[3] In the presence of a chiral ligand, the Rh-catalyzed [2+2+2] cycloaddition between diynes and 1,1-disubstituted alkenes provides an approach to the enantioselective synthesis of cyclohexadiene derivatives (Scheme 1).^[4]



Scheme 1. Transition metal-catalyzed [2+2+2] cycloaddition reactions of diynes with 1,1-disubstituted olefins.

Morita–Baylis–Hillman (M-B-H) adducts are readily available, densely functionalized molecules containing at least three functional groups in proximity, which can participate in a wide range of organic transformations.^[5] To the best of our knowledge, the participation of M-B-H adducts as alkene substrates in transition metal-catalyzed [2+2+2] cycloaddition reactions has not been reported previously. With this transformation in mind, we hypothesized that the presence of an alcohol in the vicinity of the double bond would enhance stereodiscrimination through substrate chelation or anchimeric assistance.^[6] In this scenario, a highly diastereoselective process can be envisaged. In the event of using a chiral catalyst, a kinetic resolution process can be foreseen as well.^[6c] For this reason, we decided to study the [2+2+2] cy-

Table 1. Optimization of the [2+2+2] cycloaddition between **1a** and **2a**.^[a]



Entry	Ligand	Temp. [°C]	Time	Yield of 3a [%] ^[b]	<i>ee</i> ^[c] of 3a [%]
1 ^[d]	(<i>rac</i>)-BINAP	84	22 h	0	–
2	(<i>rac</i>)-BINAP	80 (MW)	10 min	27	–
3	(<i>R</i>)-BINAP	60 (MW)	20 min	50	93
4	(<i>R</i>)-BINAP	40 (MW)	40 min	0	–
5 ^[e]	(<i>R</i>)-BINAP	84	4.5 h	55	73
6	(<i>R</i>)-H ₈ -BINAP	60 (MW)	20 min	47	95
7	(<i>R</i>)-SEGPHOS	60 (MW)	20 min	35	72
8	(<i>R</i>)-DTBM-SEGPHOS	80 (MW)	40 min	0	–
9 ^[f]	(<i>S</i>)-BINAP	60 (MW)	20 min	24	81
10 ^[g]	(<i>R</i>)-BINAP	60 (MW)	10 min	51	94

^[a] Conditions: **1a** (1 equiv.), **2a** (1.5 equiv.).

^[b] Yield of the isolated product based on **1a**.

^[c] Enantiomeric excess determined by chiral HPLC.

^[d] Homocoupling product **4a** and isomerized M-B-H adduct **5** were obtained.

^[e] Slow addition of the diyne to a mixture of catalyst and **2a** with a syringe pump for 4 h.

^[f] The enantiomer obtained in this case was the opposite to that obtained using (*R*)-BINAP.

^[g] Reaction run in ethanol.

cloaddition of symmetrical diynes with M-B-H adducts in order to obtain bicyclic cyclohexa-1,3-dienes with a tertiary/quaternary stereodiad (Table 1).

The feasibility of the cycloaddition was assessed with *N*-tosyl-tethered non-terminal diyne **1a** and M-B-H adduct **2a** using 10 mol% of cationic rhodium complex [Rh(COD)₂]BF₄ with (*rac*)-BINAP in refluxing dichloroethane (DCE) (Table 1). Only undesired homocoupling product **4a** and isomerized M-B-H adduct **5** (Figure 1) were obtained (entry 1, Table 1). The effect of microwave as the heating source was then evaluated by running the reaction at 80°C for 10 min. A 27% yield of **3a** was obtained and the formation of both **4a** and **5** was reduced. Careful ¹H NMR analysis of **3a** showed the formation of only one of the two possible diastereoisomers, demonstrating the high diastereoselectivity of the process. However, due to free rotation about the C–C bond linking

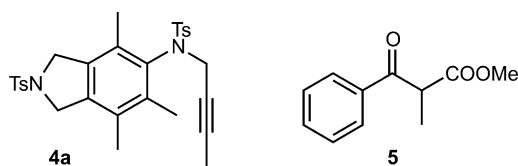


Figure 1. Homocoupling product **4a** and isomerization product **5**.

the two stereocentres, it was not possible to determine their relative configuration by NMR spectroscopy.

We then studied the stereoselectivity of this cycloaddition using various chiral phosphines. To our delight, the use of (*R*)-BINAP at 60°C led to a better yield of **3a** with excellent enantioselectivity (entry 3, Table 1). A single X-ray crystallographic analysis of **3a**^[7] revealed an (*R*)-configuration for the quaternary stereogenic centre and an (*S*)-configuration for the tertiary alcohol stereogenic centre (Figure 2). Having started from racemic M-B-H adduct **2a**, an enantioenriched cycloadduct was obtained, suggesting that a kinetic resolution process was operative. The recovered unreacted M-B-H adduct was submitted to chiral

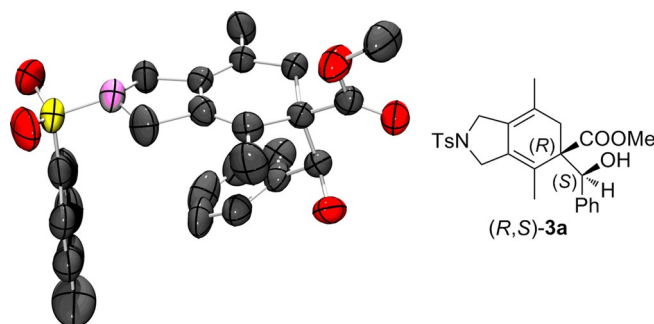


Figure 2. ORTEP diagram of cycloadduct (*R,S*)-**3a**.^[7]

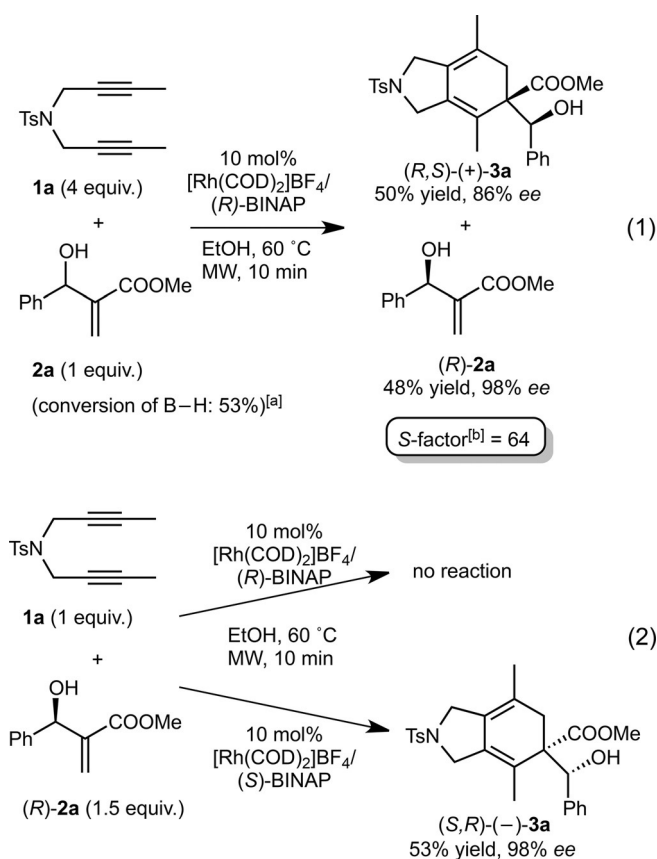
HPLC analysis resulting in an *ee* of 17%, which corroborated our hypothesis.^[8]

An attempt to reduce the temperature to 40 °C resulted in a complete loss of reactivity (entry 4, Table 1). We then evaluated the *ee* obtained under conventional heating using slow addition of the diyne **1a** to avoid its homodimerization (entry 5, Table 1). The yield of **3a** was similar but the enantioselectivity was lower (73% instead of 93, entries 5 and 3, Table 1). Different axially chiral biphenols were then tested in dichloroethane under microwave heating. Whereas (*R*)-H₈-BINAP provided analogous yields and *ees* (entry 6, Table 1), the use of both (*R*)-SEGPHOS and especially (*R*)-DTBM-SEGPHOS gave worse results (entries 7 and 8, Table 1). As a result, (*R*)- and (*S*)-BINAP were chosen for the rest of the study. (*S*)-BINAP promoted the reaction of the other enantiomer of the M-B-H adduct to afford (*S,R*)-**3a** with 81% enantiomeric excess; however, the yield was lower than when (*R*)-BINAP was used (compare entries 3 and 9, Table 1).

In all the above experiments, isomerization of **2a** to ketone **5** occurred consistently. A cationic rhodium system with (*R*)-BINAP has recently been described^[9] in which a non-coordinating solvent such as dichloromethane (DCM) favours the isomerization of allylic alcohols to saturated carbonyl compounds and so we decided to evaluate the effect of the solvent. Using EtOH, **3a** was obtained in a 51% yield and with 94% of *ee* and, importantly, no trace of the isomerized compound was detected (entry 10, Table 1). Two control experiments were carried out to determine whether or not the isomerization process was rhodium-catalyzed. Treatment of M-B-H adduct **2a** with the Rh-catalytic system in DCE at 80 °C for three hours led to its quantitative conversion into **5**. We then repeated the experiment in EtOH. The M-B-H adduct was submitted to MW heating in EtOH (10 min at 60 °C). Starting material alone was recovered, indicating that EtOH prevents isomerization. Additionally, in the reaction of entry 10 (Table 1), the recovered M-B-H adduct was obtained in 43% *ee*, confirming that the lower *ee* previously observed originates from the isomerization process.

The kinetic resolution process was then analyzed in greater detail. First, a [2+2+2] cycloaddition reaction was set up using an excess of diyne **1a** [Eq. (1), Scheme 2]. We obtained (*R,S*)-**3a** in a 50% yield and 86% *ee*, together with an excess of diyne homocoupled compounds and (*R*)-**2a** in a 48% yield and an excellent 98% *ee*. The *S*-factor for the kinetic resolution of **2a** was determined to be 64. Therefore, the rhodium-catalyzed [2+2+2] cycloaddition reaction developed appears to be a potentially efficient way to resolve M-B-H adducts.

Further insight into the resolution process was gained by treating the enantioenriched M-B-H adduct



[a] Conversion of (*rac*)-**2a** = $ee_{2a}/(ee_{2a} + ee_{3a})$.

[b] *S*-factor = $\ln[(1 - \text{conv.})(1 - ee_{2a})]/\ln[(1 - \text{conv.})(1 + ee_{2a})]$.

Scheme 2. Kinetic resolution of M-B-H adduct **2a** [Eq. (1)] and cycloaddition reactions with enantioenriched (*R*)-**2a** [Eq. (2)].

(*R*)-**2a** with **1a** under the optimized reaction conditions (entry 10, Table 1) with either (*R*)- or (*S*)-BINAP [Eq. (2), Scheme 2]. As expected, no cycloadduct was isolated in the reaction with (*R*)-BINAP. On the other hand, (*S*)-BINAP efficiently promoted the cycloaddition of (*R*)-**2a** to (*S,R*)-**3a**, corroborating the high enantiospecificity of the process.

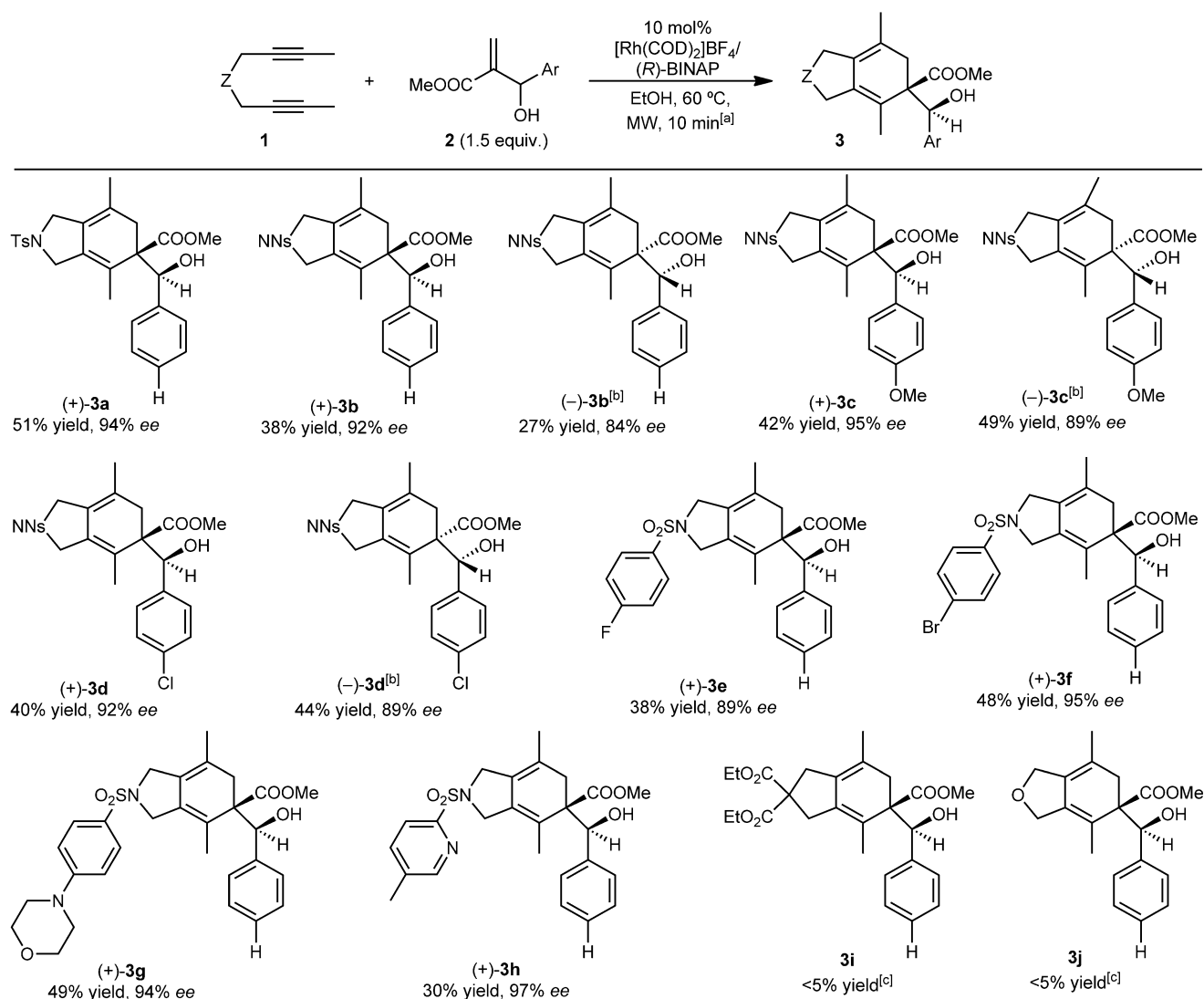
Finally, the cycloaddition of **1a** with **2a** was monitored over time in a reaction carried out under conventional heating, which has a longer reaction time than that run under microwave heating. This kinetic experiment revealed a rapid consumption of (*S*)-**2a** to form (*R,S*)-**3a** cycloadduct with a high enantiomeric excess, which did not decrease over time. After approximately 2.5 h of reaction, the cycloadduct yield and the *ee* of the M-B-H adduct reached a plateau indicating that (*R*)-**2a** does not react at a significant rate under the reaction conditions (see the Supporting Information). This experiment constitutes further evidence that the two enantiomers of the M-B-H adduct show different reactivities under asymmetric Rh/biphenyl phosphine catalysis.

In a final set of optimization experiments, the relative amount of the M-B-H adduct **2a** was modified. Using either 3 or 4 equivalents of **2a**, the yield of **3a** was not improved (41% and 42%, respectively).^[10] Therefore, we decided to use only 1.5 equivalents of the M-B-H adduct. In order to study the effect of the hydroxy group of the M-B-H adduct in the cycloaddition process, acetyl- and Boc-protected M-B-H adducts were tested using the optimized reaction conditions. In neither case was cycloadduct **3a** obtained, indicating that the free hydroxy group has a determining role in the process.

Having established the background for the kinetic resolution that operates in the described process, we

again focused on the stereoselective synthesis of highly functionalized cyclohexadienes, proceeding to evaluate the scope of the reaction by varying both the tethers of the diyne and the M-B-H adduct.

Diyne **1b** containing a 4-nitrobenzenesulfonamide (NNs) instead of *N*-tosylsulfonamide was used since this group could be deprotected under milder reaction conditions^[11] (compounds **3b–3d**, Scheme 3). Substituents in the *para*-position of the phenyl ring of **2** with different electronic demand (OMe, Cl) gave the corresponding cycloadducts with good yields and high enantiomeric excesses. In the case of cycloadduct **3b**, we tested again the effect of increasing the M-B-H adduct equivalents. With 2, 3 or 4 equiv. of **2a**, the



^[a] Conditions: **1a** (10 mmol, 1 equiv.), **2** (1.5 equiv.). The cited yields were of isolated products. Enantiomeric excesses were determined by chiral HPLC.

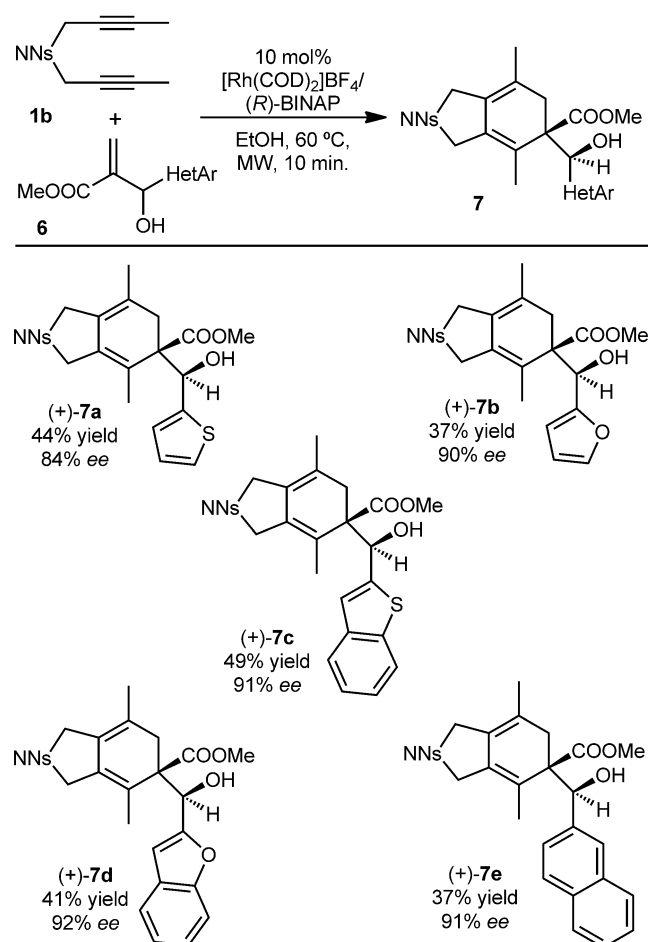
^[b] (*S*)-BINAP was used.

^[c] The reaction was carried out at 80 °C (MW) for 10 min. Yield estimated by NMR.

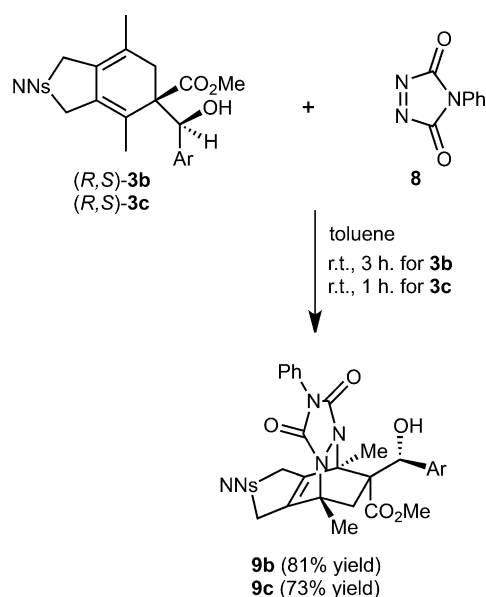
Scheme 3. Scope of the process.

yield was only improved to 43%, 45% and 56%, respectively. Using the enantiomeric (*S*)-BINAP ligand, (–)-**3b**, (–)-**3c** and (–)-**3d** (Scheme 3) were obtained in high *ees*. We then changed the substituent in the *para* position of the phenyl ring at the sulfonamide tether. Fluoride and bromide substituted diynes led to (+)-**3e** and (+)-**3f** with high enantiomeric excesses (Scheme 3). Changing the *para* substituent to a bulkier moiety such as a morpholine ring did not affect the yield or the enantiomeric excess, affording compound (+)-**3g** in a 49% yield with 94% *ee*. A diyne bearing the 5-methyl-2-pyridinesulfonyl group provided (+)-**3h** in a 30% yield with 97% *ee*. The presence of a nitrogen atom in the molecule did not seem to affect the process by poisoning the catalyst. However, M-B-H adduct **2a** failed to provide significant amounts of cycloadducts **3i** and **3j** when reacted with malonate and oxygen tethered diynes.

M-B-H adducts containing heteroaromatic rings such as thiophene, furan, benzothiophene, and benzofuran were then synthesized and tested as more challenging substrates (Scheme 4). In all cases, the corre-



Scheme 4. [2+2+2] cycloaddition reactions between diyne **1b** and Morita–Baylis–Hillman adducts **6**.



Scheme 5. Diels–Alder cycloaddition between 1,3-cyclohexadienes **3b** and **3c** and dienophile **8**.

sponding cycloadducts were obtained with high enantioselectivities. Thus, a heteroatom in the M-B-H adduct did not affect the process and did not poison the rhodium catalyst. Finally, an effective reaction was also obtained with a M-B-H adduct with a naphthalene group (Scheme 4). The relative and absolute configurations of **3b–3h** and **7a–7e** were tentatively assigned by analogy with (+)-**3a**.

We then exploited the 1,3-cyclohexadiene derivatives generated by the [2+2+2] cycloaddition reaction to access more densely functionalized scaffolds *via* Diels–Alder reactions^[12] (Scheme 5). A reactive nitrogen-containing heterodienophile, *N*-phenyltriazolinedione **8**, was reacted with the unactivated and highly substituted cycloadducts **3b** and **3c** in toluene at room temperature, leading to **9b** and **9c**, respectively, in high yields. 2D NMR experiments (see the Supporting Information) of the Diels–Alder adducts revealed a highly diastereoselective [4+2] cycloaddition occurring to the opposite side of the ester group. In both cases, traces of the stereoisomer resulting from addition of **8** to the same face of the ester group were also observed (see the Supporting Information).

To summarize, we have developed a diastereo- and enantioselective [2+2+2] cycloaddition reaction between diynes and Morita–Baylis–Hillman adducts using a combination of [Rh(COD)₂]₂BF₄ and chiral BINAP ligands. A kinetic resolution of the M-B-H adduct was achieved generating an optically pure 1,3-cyclohexadiene containing vicinal tertiary and quaternary carbon centres. Furthermore, Diels–Alder reactions using these dienes as substrates occurred in a highly diastereoselective fashion to provide densely functionalized polycyclic scaffolds.

Experimental Section

General Procedure for the Rh-Catalyzed [2+2+2] Cycloaddition Reactions

A stirred mixture of $[\text{Rh}(\text{COD})_2]\text{BF}_4$ (4.1 mg, 0.01 mmol, 0.1 equiv.) and (*R*)-BINAP (6.3 mg, 0.01 mmol, 0.1 equiv.) in dichloromethane (2 mL) was degassed under nitrogen. Hydrogen gas was introduced to the catalyst solution and the mixture was stirred for 30 min. The resulting mixture was concentrated to dryness. Ethanol (3 mL) was then added and the solution was stirred under a nitrogen atmosphere. The solution was introduced to a 10-mL screw-capped vial. To this solution Morita–Baylis–Hillman adduct **2** or **6** (0.15 mmol, 1.5 equiv.) and diyne **1** (0.1 mmol, 1 equiv.) were added under a nitrogen atmosphere. The vial was then placed inside the cavity of the microwave synthesizer. The reaction mixture was heated at 60 °C for 10 min (TLC monitoring). The solvent was then evaporated and the residue was purified by column chromatography on silica gel to give compounds **3** or **7**.

Acknowledgements

Financial support from the Spanish Ministry of Education and Science (MINECO) (Projects No.: CTQ2014-54306-P, CTQ2012-32436 and a RyC contract to A. L.) and the DIUE of the Generalitat de Catalunya (Project No.: 2014SGR931) are acknowledged. Thanks are due to Generalitat de Catalunya for predoctoral grants to M.F. and M.P.

References

- [1] For selected reviews, see: a) E. J. Corey, A. Guzman-Perez, *Angew. Chem.* **1998**, *110*, 2092; *Angew. Chem. Int. Ed.* **1998**, *37*, 388; b) I. Denissova, L. Barriault, *Tetrahedron* **2003**, *59*, 10105; c) C. J. Douglas, L. E. Overman, *Proc. Natl. Acad. Sci. USA* **2004**, *101*, 5363; d) B. M. Trost, C. Jiang, *Synthesis* **2006**, 369; e) M. Bella, T. Gasperi, *Synthesis* **2009**, 1583; f) B. Wang, Y. Q. Tu, *Acc. Chem. Res.* **2011**, *44*, 1207; g) Y. Liu, S. J. Han, W.-B. Liu, B. M. Stoltz, *Acc. Chem. Res.* **2015**, *48*, 740.
- [2] For selected and recent reviews, see: a) A. Thakur, J. Louie, *Acc. Chem. Res.* **2015**, *48*, 2354; b) M. Amatore, C. Aubert, *Eur. J. Org. Chem.* **2015**, 265; c) Y. Satoh, Y. Obora, *Eur. J. Org. Chem.* **2015**, 5041; d) D. L. J. Broere, E. Ruijter, *Synthesis* **2012**, 2639; e) S. Okamoto, *Heterocycles* **2012**, *85*, 1579; f) Y. Shibata, K. Tanaka, *Synthesis* **2012**, 323; g) N. Weding, M. Hapke, *Chem. Soc. Rev.* **2011**, *40*, 4525; h) R. Hua, M. V. A. Abrenica, P. Wang, *Curr. Org. Chem.* **2011**, *15*, 712; i) M. R. Shaaban, R. El-Sayed, A. H. M. Elwahi, *Tetrahedron* **2011**, *67*, 6095; j) G. Domínguez, J. Pérez-Castells, *Chem. Soc. Rev.* **2011**, *40*, 3430; k) A. Pla-Quintana, A. Roglans, *Molecules* **2010**, *15*, 9230. l) For a monography, see: *Transition-metal-mediated aromatic ring construction*, (Ed.: K. Tanaka), Wiley, Hoboken, **2013**.
- [3] For selected references, see: a) T. Shibata, Y. Arai, Y. Tahara, *Org. Lett.* **2005**, *7*, 4955; b) S. Brun, L. García, I. González, A. Torrent, A. Dachs, A. Pla-Quintana, T. Parella, A. Roglans, *Chem. Commun.* **2008**, 4339; c) A. Geny, S. Gaudrel, F. Slowniski, M. Amatore, G. Chour-aqui, M. Malacria, C. Aubert, V. Gandon, *Adv. Synth. Catal.* **2009**, *351*, 271; d) A. Dachs, A. Pla-Quintana, T. Parella, M. Solà, A. Roglans, *Chem. Eur. J.* **2011**, *17*, 14493; e) T. León, M. Parera, A. Roglans, A. Riera, X. Verdager, *Angew. Chem.* **2012**, *124*, 7057; *Angew. Chem. Int. Ed.* **2012**, *51*, 6951; f) K. Masutomi, N. Sakikawa, K. Noguchi, K. Tanaka, *Angew. Chem.* **2012**, *124*, 13208; *Angew. Chem. Int. Ed.* **2012**, *51*, 13031.
- [4] For selected references, see: a) K. Tsuchikama, Y. Kuwata, T. Shibata, *J. Am. Chem. Soc.* **2006**, *128*, 13686; b) T. Shibata, A. Kawachi, M. Ogawa, Y. Kuwata, K. Tsuchikama, K. Endo, *Tetrahedron* **2007**, *63*, 12853; c) K. Tanaka, M. Takahashi, H. Imase, T. Osaka, K. Noguchi, M. Hirano, *Tetrahedron* **2008**, *64*, 6289; d) M. Kobayashi, T. Suda, K. Noguchi, K. Tanaka, *Angew. Chem.* **2011**, *123*, 1702; *Angew. Chem. Int. Ed.* **2011**, *50*, 1664.
- [5] For selected reviews, see: a) D. Basavaiah, P. D. Rao, R. S. Hyma, *Tetrahedron* **1996**, *52*, 8001; b) D. Basavaiah, A. J. Rao, T. Satyanarayana, *Chem. Rev.* **2003**, *103*, 811; c) V. Singh, S. Batra, *Tetrahedron* **2008**, *64*, 4511; d) D. Basavaiah, B. S. Reddy, S. S. Badsara, *Chem. Rev.* **2010**, *110*, 5447; e) T.-Y. Liu, M. Xie, Y.-C. Chen, *Chem. Soc. Rev.* **2012**, *41*, 4101; f) D. Basavaiah, G. Veeraraghavaiah, *Chem. Soc. Rev.* **2012**, *41*, 68.
- [6] For selected references on the stereocontrolled reaction of M-B-H adducts, see: a) T. Gendrineau, N. Demoulin, L. Navarre, J.-P. Genet, S. Darses, *Chem. Eur. J.* **2009**, *15*, 4710; b) Y. Wang, X. Feng, H. Du, *Org. Lett.* **2011**, *13*, 4954. For a reference to the kinetic resolution of tertiary propargylic alcohols by a [2+2+2] cycloaddition, see: c) K. Tanaka, T. Osaka, K. Noguchi, M. Hirano, *Org. Lett.* **2007**, *9*, 1307.
- [7] CCDC 1429936 (compound **3a**) contains the supplementary crystallographic data for this paper. These data can be obtained free of charge from The Cambridge Crystallographic Data Centre via www.ccdc.cam.ac.uk/data_request/cif.
- [8] The low *ee* obtained can be justified on the grounds of a competing enantiocomplementary isomerization process of the M-B-H adduct. When the isomerization process is suppressed a higher *ee* is obtained (*vide infra*).
- [9] K. Ren, L. Zhang, B. Hu, M. Zhao, Y. Tu, X. Xie, T. Y. Zhang, Z. Zhang, *ChemCatChem* **2013**, *5*, 1317.
- [10] The reaction shows substrate inhibition when a high excess of M-B-H adduct is used. Our interpretation is that this inhibition is probably due to coordination of multiple M-B-H adducts to the rhodium complex.
- [11] T. Fukuyama, C.-K. Jow, M. Cheung, *Tetrahedron Lett.* **1995**, *36*, 6373.
- [12] a) A. L. Jones, J. K. Snyder, *Org. Lett.* **2010**, *12*, 1592; b) M. Shibuya, T. Sudoh, T. Kawamura, Y. Yamamoto, *Org. Biomol. Chem.* **2015**, *13*, 5862.