

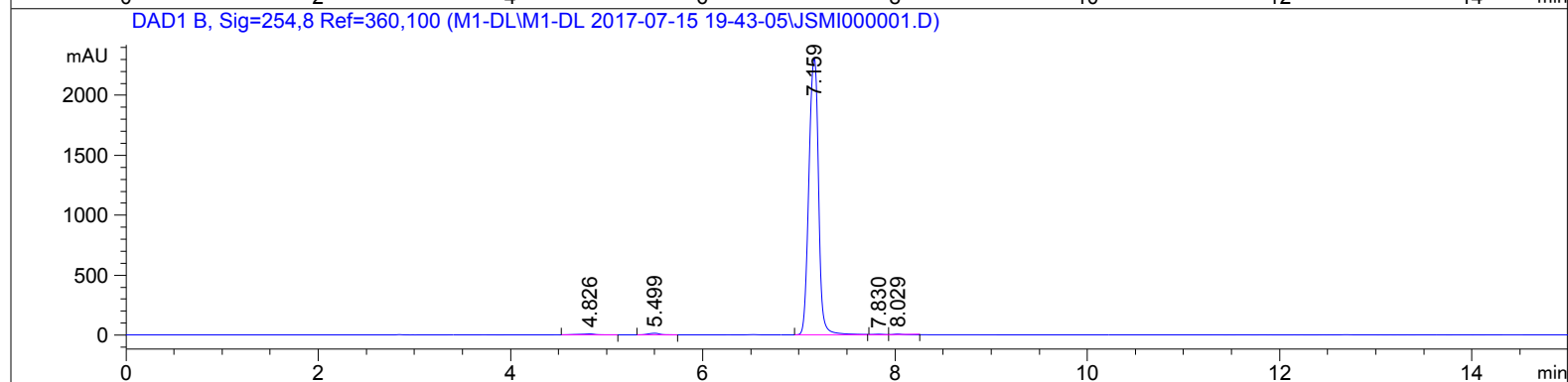
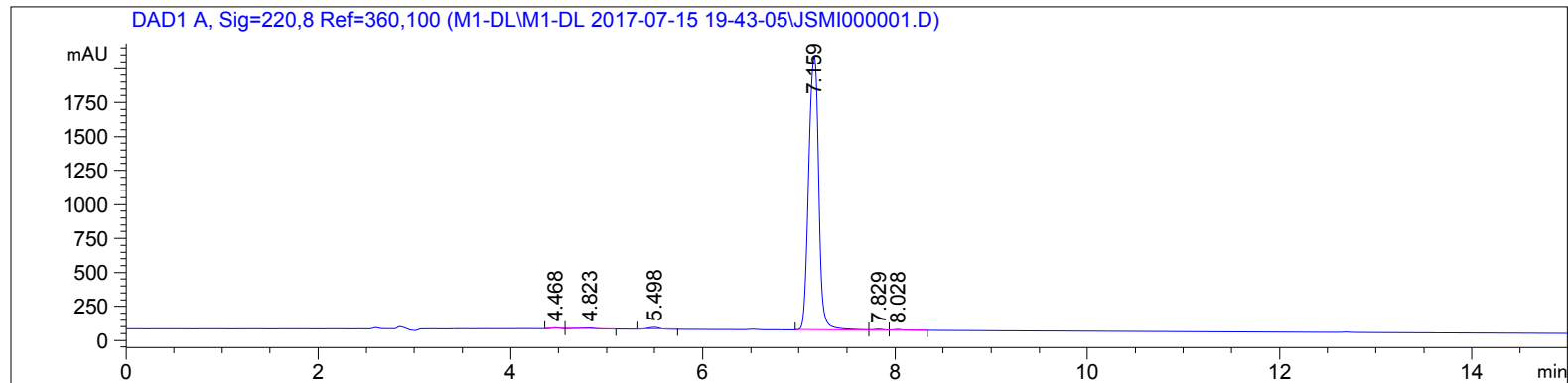
Sample Name: 1

```

=====
Acq. Operator   : Y                      Seq. Line :    1
Acq. Instrument : HPLC-002              Location  : Vial 62
Injection Date  : 7/15/2017 7:44:11 PM Inj       :    1
                                           Inj Volume: 5 µl

Acq. Method    : D:\DATA\M1-DL\M1-DL 2017-07-15 19-43-05\M1-CH3OH.M
Last changed   : 3/24/2017 1:43:33 PM by Y
Analysis Method: D:\DATA\DEFAULT.D\DA.M (5MIN5-90ACN.M)
Last changed   : 7/15/2017 9:16:31 PM by Y
                (modified after loading)
=====

```



```

=====
                          Area Percent Report
=====

```

```

Sorted By           :      Signal
Multiplier          :      1.0000
Dilution            :      1.0000
Use Multiplier & Dilution Factor with ISTDs

```

Signal 1: DAD1 A, Sig=220,8 Ref=360,100

| Peak # | RetTime [min] | Type | Width [min] | Area [mAU*s] | Height [mAU] | Area % |
|--------|---------------|------|-------------|--------------|--------------|---------|
| 1 | 4.468 | BV | 0.0927 | 42.51328 | 7.22142 | 0.2837 |
| 2 | 4.823 | VB | 0.1531 | 88.67049 | 7.77357 | 0.5917 |
| 3 | 5.498 | BB | 0.1324 | 113.08367 | 13.68865 | 0.7547 |
| 4 | 7.159 | BV | 0.1170 | 1.46330e4 | 2008.14478 | 97.6541 |
| 5 | 7.829 | VV | 0.1146 | 57.98571 | 7.30751 | 0.3870 |

Sample Name: 1

| Peak # | RetTime [min] | Type | Width [min] | Area [mAU*s] | Height [mAU] | Area % |
|--------|---------------|------|-------------|--------------|--------------|--------|
| 6 | 8.028 | VB | 0.1104 | 49.26575 | 6.35830 | 0.3288 |

Totals : 1.49845e4 2050.49422

Signal 2: DAD1 B, Sig=254,8 Ref=360,100

| Peak # | RetTime [min] | Type | Width [min] | Area [mAU*s] | Height [mAU] | Area % |
|--------|---------------|------|-------------|--------------|--------------|---------|
| 1 | 4.826 | BB | 0.1535 | 89.88575 | 7.97279 | 0.5460 |
| 2 | 5.499 | BB | 0.1317 | 108.48046 | 13.22813 | 0.6589 |
| 3 | 7.159 | BB | 0.1115 | 1.60938e4 | 2305.05981 | 97.7536 |
| 4 | 7.830 | BV | 0.1194 | 42.42413 | 5.07988 | 0.2577 |
| 5 | 8.029 | VB | 0.1052 | 44.59288 | 6.10912 | 0.2709 |
| 6 | 33.814 | BB | 0.0914 | 84.45528 | 14.19494 | 0.5130 |

Totals : 1.64636e4 2351.64467

=====
*** End of Report ***