



TEL: 4000998382 13881987151 18981919709 18981717076
 FAX: +86-28-85377358
 QQ: 2850175233 576098673 2850175234 2851730521
 E-mail: herbpurify@163.com ruifensi@herbpurify.com
 Web: Http://www.herbpurify.com www.chnbestbio.com

Chengdu Herbpurify CO., LTD

成都瑞芬思生物科技有限公司



```

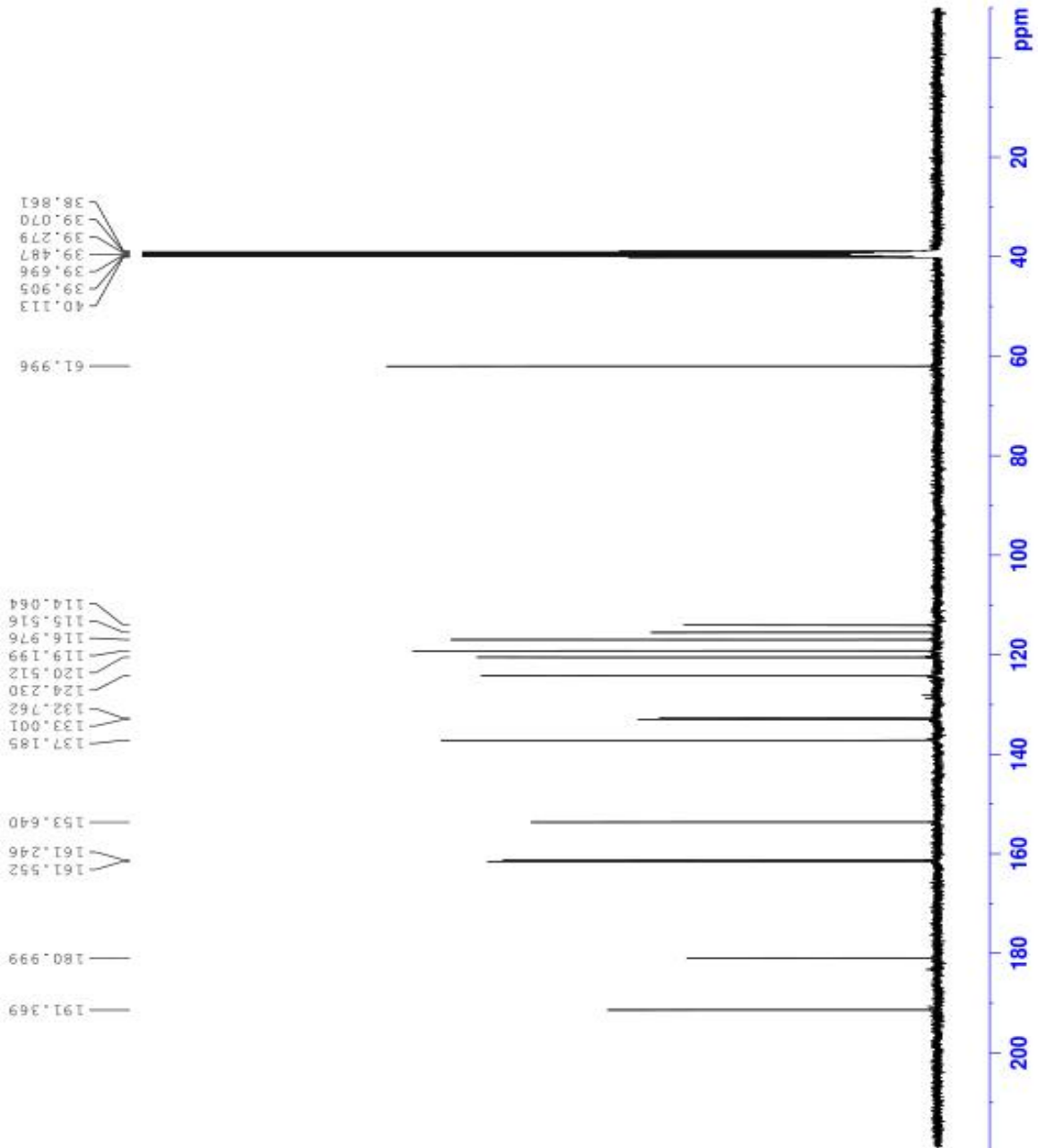
Current Data Parameters
NAME    RFS-LIPNIS-C13-DMSO-20180120
EXPNO   10
PROCNO  1

F2 - Acquisition Parameters
Date_   20180121
Time    10.11
INSTRUM spect
PROBHD  5 mm PABBO 1H/
PULPROG zgpg30
TD       65536
SOLVENT DMSO
NS       1024
DS       4
SMH      24038.461 Hz
SFB      0.366798 Hz
FIDRES   1.3631988 sec
AQ       197.41
RG       20.800 usec
DM       8.00 usec
DE       298.7 K
TE       2.00000000 sec
D1       0.03000000 sec
D11      1
TD0      1

===== CHANNEL f1 =====
NUC1     13C
P1       8.99 usec
PL1      63.09600067 W
SFO1     100.6303756 MHz

===== CHANNEL f2 =====
CPDPRG2 waltz16
NUC2     1H
P2       90.00 usec
PL2      15.84899948 W
PLW2     0.32058001 W
PLW3     0.25966999 W
SFO2     400.1616006 MHz

F2 - Processing parameters
SI       32768
SF       100.6203623 MHz
WDW      EM
SSB      0
LB       1.00 Hz
GB       0
PC       1.40
  
```





TEL: 4000998382 13881987151 18981919709 18981717076
 FAX: +86-28-85377358
 QQ: 2850175233 576098673 2850175234 2851730521
 E-mail: herbpurify@163.com ruifensi@herbpurify.com
 Web: Http://www.herbpurify.com www.chnbestbio.com

Chengdu Herbpurify CO., LTD

成都瑞芬思生物科技有限公司

Batch NO: L-014-171216

Certificate Of Analysis								
Chinese Name	芦荟大黄素	Botanical Source	aloe-emodin					
English Name	Aloemodin	CAS Number	481-72-1					
Mol. Formula	C ₁₅ H ₁₀ O ₅	Mol. Weight	270.24					
Solubility	Methanol	Appearance	Orange crystals					
Loss on drying	≤2.0%	Purity	97.23%					
QC	HPLC: 甲醇: 0.2% 磷酸水溶液=85: 15 波长: 254nm							
Structure								
Aloemodin HPLC								
Peak#	Ret time[min]	Area%	Area	Height	Resolution	N	Effective plate number	T
1	5.250	0.2355	39015	4039	1.23	6893	197	1.13
2	6.512	0.2454	40662	4771	1.04	13621	1485	1.21
3	6.740	0.1268	21011	2626	3.49	16559	2062	0.88
4	7.647	0.4035	66838	5807	1.25	10299	1901	1.00
5	8.062	97.23	16106814	1205824	1.60	8500	1790	1.20
6	8.626	0.4488	74351	5644	1.73	10005	2445	0.98
7	9.234	0.4483	74272	5567	3.69	11178	3112	0.92
Total	100	16566134	1242348					
Storage	Stored without light and heat. Stored in cool, dry, airproof and innocuous conditions							
Remarks	<p>即配即用, 仅限于实验时使用, 不能用于人体。</p> <p>如遇质量问题, 请于收到产品之日起 15 日内与我们联系。</p> <p>Namely with the use, only in the experimental use, can not be used for the human body.</p> <p>In case of quality problems, please contact us within 15 days from the date of receipt of the product.</p>							

Review date : 2017-12-16

Report date : 2017-12-16

Operator: zhangqin

Q.C manager: Zhengxin