



Tel: 400-099-8382 13881987151 18380241536 18981717076
 Fax: +86-028-85377358
 QQ: 2850175233 2851730520 2851730522 2851730523 2851730521
 Skype: herbpurify herbpurify-sales
 E-mail: ruifensi@herbpurify.com(Domestic) info@chnbestbio.com(International)
 Website: www.herbpurify.com(Domestic) www.chnbestbio.com(International)

Chengdu Herbpurify CO., LTD

成都瑞芬思生物科技有限公司

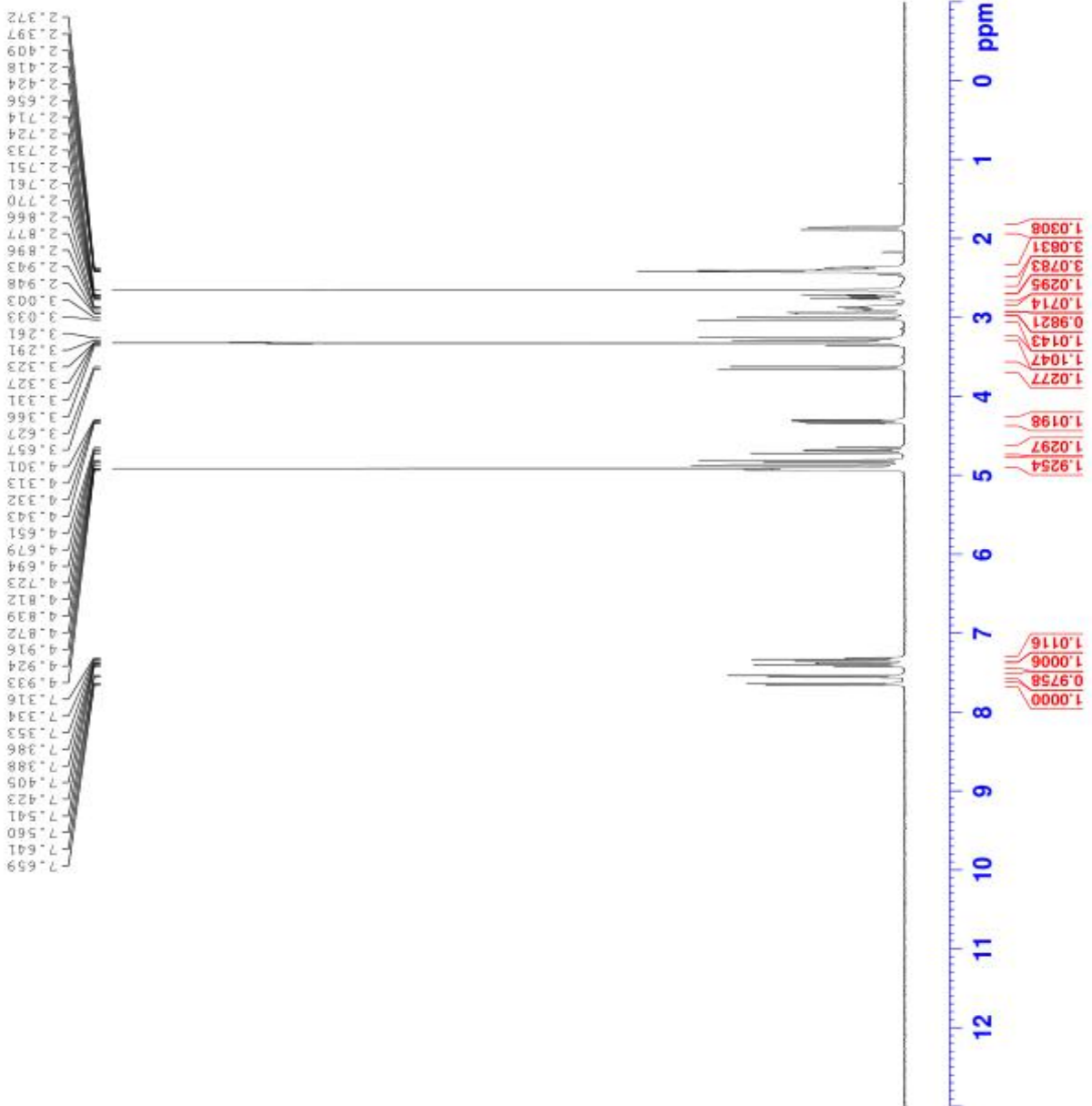


Current Data Parameters
 NAME REF-000308UBI-HI-CD300-20160310
 EXPNO 10
 PROCNO 1

F2 - Acquisition Parameters
 Date_ 20160310
 Time_ 20:27
 INSTRUM spect
 PROBHD 5 mm PAABD BB/
 PULPROG zg30
 TD 65536
 SOLVENT MeOD
 NS 16
 DS 2
 SWH 8273.685 Hz
 FIDRES 0.734466 Hz
 AQ 3.9886537 sec
 RG 187.41 sec
 JM 60.8650 usec
 DE 8.00 usec
 TE 294.1 K
 B1 1.00000000 sec
 TD0 1

===== CHANNEL f1 =====
 NUC1 1H
 P1 13.00 usec
 PL1 0.00 dB
 F1F4 15.8489998 MHz
 SFO1 400.1532013 MHz

F2 - Processing parameters
 SI 65536
 SF 400.1600000 MHz
 XCVM 0
 SSB 0
 LB 0.10 Hz
 GB 0
 FC 1.00





Tel: 400-099-8382 13881987151 18380241536 18981717076
 Fax: +86-028-85377358
 QQ: 2850175233 2851730520 2851730522 2851730523 2851730521
 Skype: herbpurify herbpurify-sales
 E-mail: ruifensi@herbpurify.com(Domestic) info@chnbestbio.com(International)
 Website: www.herbpurify.com(Domestic) www.chnbestbio.com(International)

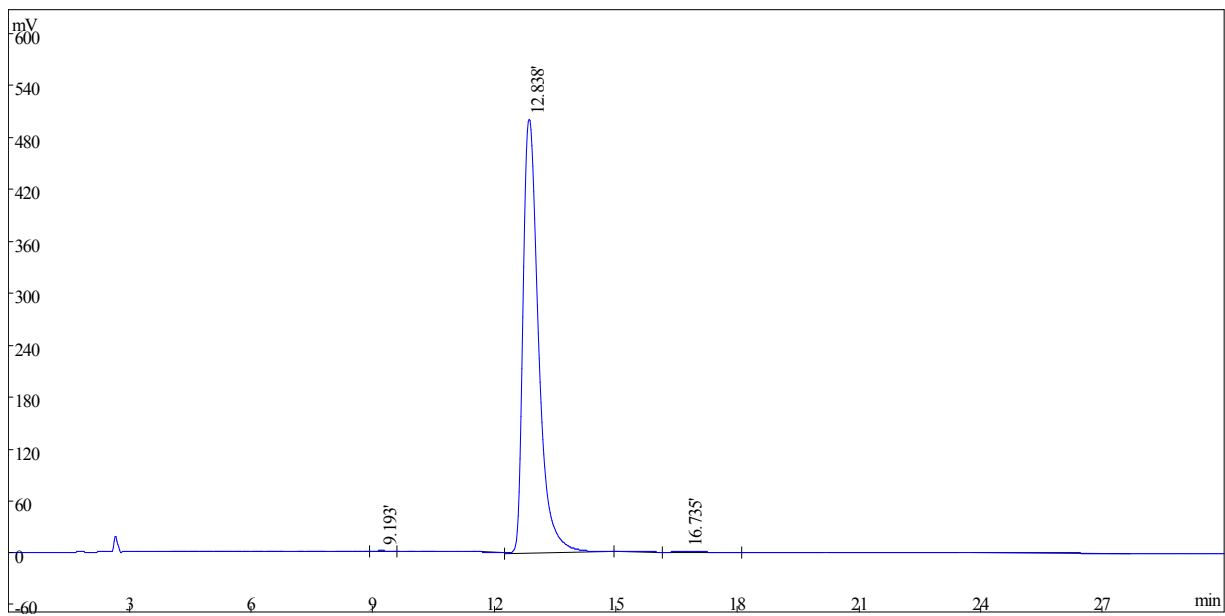
Chengdu Herbpurify CO., LTD

成都瑞芬思生物科技有限公司

Batch NO: G-012-180604

Certificate Of Analysis			
Chinese Name	钩吻素子	Botanical Source	gelsemium elegan
English Name	koumine	CAS Number	1358-76-5
Mol. Formula	C20H22N2O2	Mol. Weight	306.407
Solubility	Methanol	Appearance	white crystalline powder
Loss on drying	≤2.0%	Purity	99.58%
QC	HPLC: 甲醇: .0.1%三乙胺 (PH=9) =60: 40 波长 232nm		
Structure			

Koumine HPLC



Peak#	Ret time[min]	Area%	Area	Height	Resolution	N	Effective plate number	T
1	9.193	0.08536	10953	694	6.64	7916	0	1.35
2	12.838	99.58	12778048	501028	4.51	5912	477	1.63
3	16.735	0.3317	42559	1076	0.00	4177	849	1.11
Total		100	12831560	502798				
Storage	Stored without light and heat. Stored in cool, dry, airproof and innocuous conditions							
Remarks	即配即用, 仅限于实验时使用, 不能用于人体。 如遇质量问题, 请于收到产品之日起 15 日内与我们联系。 Namely with the use, only in the experimental use, can not be used for the human body. In case of quality problems, please contact us within 15 days from the date of receipt of the product.							

Review date : 2018-06-05

Report date : 2018-06-05

Operator: xulu

Q.C manager: Zhengxin