



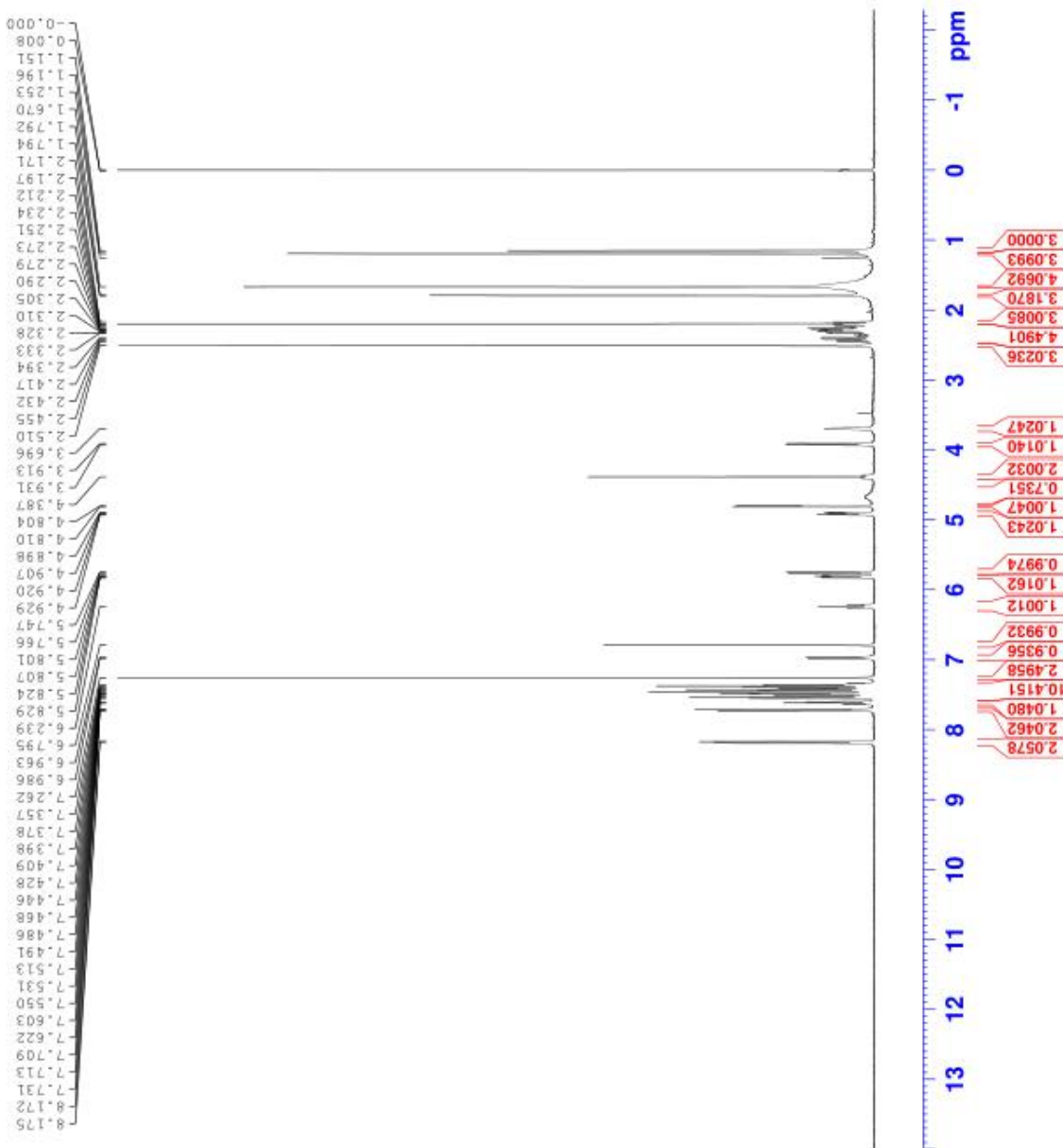
Tel: 400-099-8382 13881987151 18380241536 18981717076
 Fax: +86-028-85377358
 QQ: 2850175233 2851730520 2851730522 2851730523 2851730521
 Skype: herbpurify herbpurify-sales
 E-mail: ruifensi@herbpurify.com(Domestic) info@chnbestbio.com(International)
 Website: www.herbpurify.com(Domestic) www.chnbestbio.com(International)

Chengdu Herbpurify CO., LTD

成都瑞芬思生物科技有限公司



Current Data Parameters
 NAME RFS-7-02HC-MI-CDCL3-20180711
 EXPNO 10
 PROCNO 1
 F2 - Acquisition Parameters
 Date_ 20180711
 Time 11.11
 INSTRUM spect
 PROBNM 5 mm PABBO BB
 PULPROG zg30
 TD 65536
 SOLVENT CDCL3
 NS 16
 DS 2
 SWH 8223.685 Hz
 FIDRES 0.125083 Hz
 AQ 3.9846387 sec
 EQ 17.000 usec
 DE 60.400 usec
 TE 296.2 K
 D1 1.00000000 sec
 TD0 1
 ===== CHANNEL F1 =====
 NUC1 1H
 P1 13.22 usec
 PL1 15.8489998 W
 SFO1 400.1632013 MHz
 F2 - Processing parameters
 SI 65536
 SF 400.1600083 MHz
 WDM 0
 SSB 0
 LB 0.30 Hz
 GB 0
 EC 1.00





Tel: 400-099-8382 13881987151 18380241536 18981717076
 Fax: +86-028-85377358
 QQ: 2850175233 2851730520 2851730522 2851730523 2851730521
 Skype: herbpurify herbpurify-sales
 E-mail: ruifensi@herbpurify.com(Domestic) info@chnbestbio.com(International)
 Website: www.herbpurify.com(Domestic) www.chnbestbio.com(International)

Chengdu Herbpurify CO., LTD

成都瑞芬思生物科技有限公司

Batch NO: B-077-180530

Certificate Of Analysis								
Chinese Name	7-表紫杉醇			Botanical Source	Taxus chinensis			
English Name	7-Epitaxol			CAS Number	105454-04-4			
Mol. Formula	C ₄₇ H ₅₁ NO ₁₄			Mol. Weight	853.913			
Solubility	Methanol			Appearance	White crystalline			
Loss on drying	≤2.0%			Purity	98.66%			
QC	HPLC: 乙腈: 水=60:40 波长 273nm							
Structure								
7-Epitaxol HPLC								
Peak#	Ret time[min]	Area%	Area	Height	Resolution	N	Effective plate number	T
1	5.532	0.1564	44063	3485	11.49	4466	0	0.97
2	9.412	0.04992	14064	1103	0.99	12713	2161	1.07
3	9.760	0.06331	17838	1305	3.32	11897	2233	1.00
4	11.266	0.3978	112086	5496	4.00	7121	1845	1.28
5	13.963	98.66	27798762	918249	17.32	4964	1810	1.28
6	31.723	0.6719	189314	4044	0.00	10715	7304	1.33
Total		100	28176127	933682				
Storage	Stored without light and heat. Stored in cool, dry, airproof and innocuous conditions							
Remarks	即配即用, 仅限于实验时使用, 不能用于人体。 如遇质量问题, 请于收到产品之日起 15 日内与我们联系。 Namely with the use, only in the experimental use, can not be used for the human body. In case of quality problems, please contact us within 15 days from the date of receipt of the product.							

Review date : 2018-05-30

Report date : 2018-05-30

Operator: xulu

Q.C manager: Zhengxin