

DMD0-CH-1

实验时间: 2019-5-23, 11:04:54
谱图文件: E:\气相\9790 II\B20190523110454.org

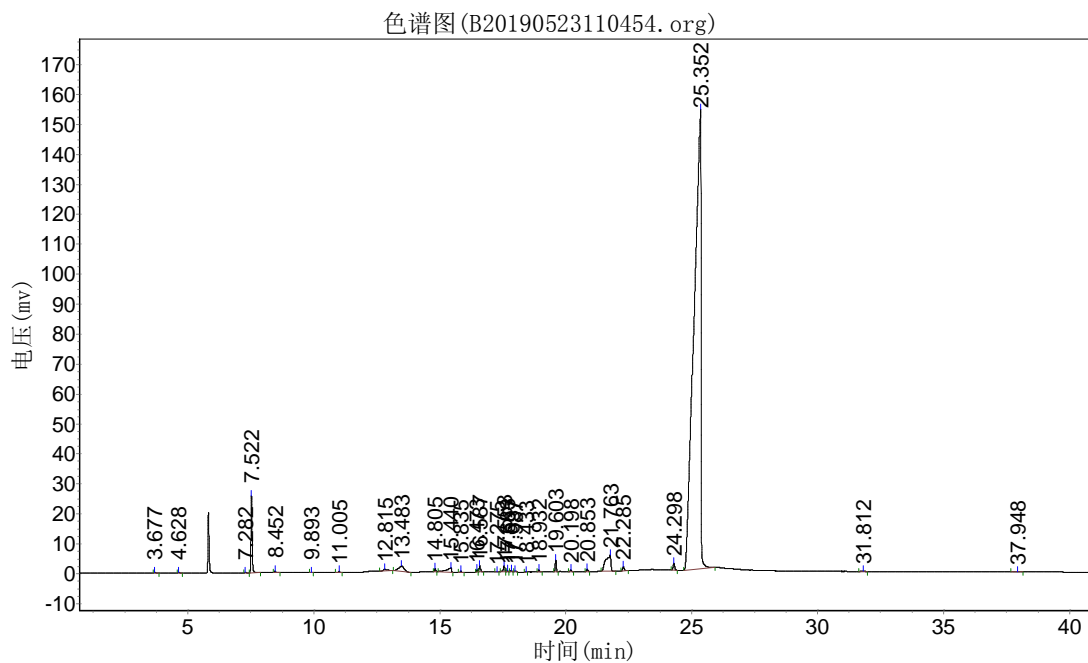
报告时间: 2019-5-23, 13:54:07
积分方法: 面积归一法

使用仪器类型: 气相色谱

检测器: FID

进样器: 分流

柱温: 程序升温



分析结果表

峰号	峰名	保留时间	峰高	峰面积	含量
1		3.677	194.560	692.900	0.0219
2		4.628	187.512	662.500	0.0209
3		7.282	128.784	512.400	0.0162
4		7.522	25654.037	85415.805	2.6955
5		8.452	583.768	1992.950	0.0629
6		9.893	105.101	323.500	0.0102
7		11.005	373.663	1364.200	0.0431
8		12.815	522.045	6186.997	0.1952
9		13.483	1800.552	26842.000	0.8471
10		14.805	1082.484	3482.450	0.1099
11		15.440	1602.894	20301.002	0.6406
12		15.835	560.000	1777.450	0.0561
13		16.473	845.014	2688.488	0.0848
14		16.587	2174.293	7524.862	0.2375
15		17.275	80.572	405.800	0.0128
16		17.553	2064.662	7271.000	0.2295
17		17.683	470.083	1387.000	0.0438
18		17.837	487.494	1570.573	0.0496
19		17.987	229.249	1207.600	0.0381
20		18.433	139.333	443.500	0.0140
21		18.932	851.617	2618.101	0.0826

22	19.603	4101.368	12816.001	0.4044
23	20.198	704.542	2564.500	0.0809
24	20.853	846.216	3140.700	0.0991
25	21.763	5305.343	76946.000	2.4282
26	22.285	1422.438	6666.401	0.2104
27	24.298	2261.851	10430.600	0.3292
28	25.352	153367.047	2880243.250	90.8930
29	31.812	87.000	778.499	0.0246
30	37.948	47.365	570.301	0.0180
总计		208280.887	3168827.327	100.0000