

HPLC of Copper Tripeptide-1

Sample Description: Copper Tripeptide-1

Structure : GHK.CU²⁺

Lot No : MB1805CP2

Column : 4.6×250mm,Venusil XBP-C18

Solvent A : 0.1% trifluoroacetic in 100% acetonitrile

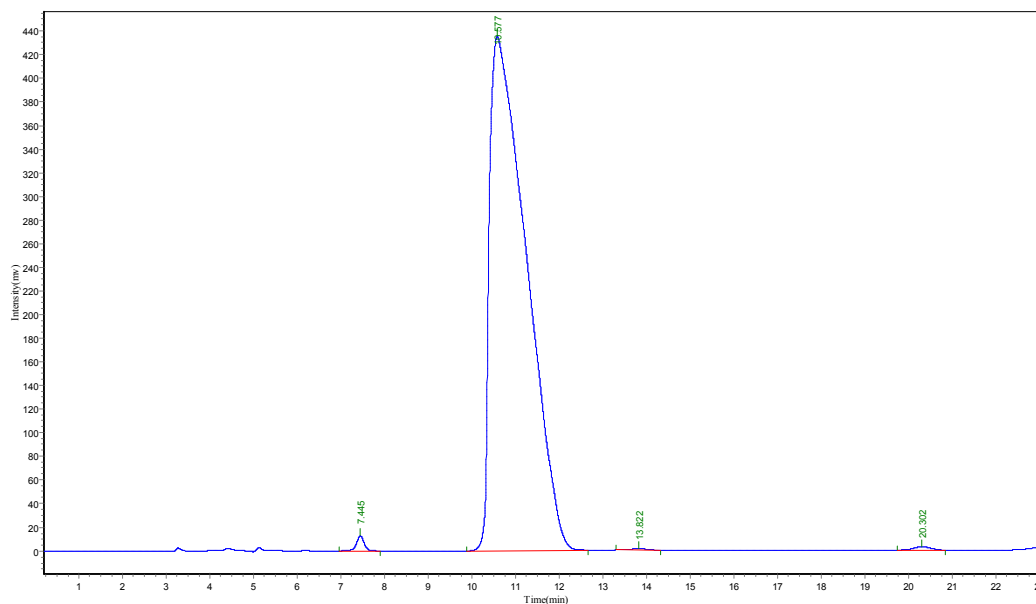
Solvent B : 0.1% trifluoroacetic in 100% water

Gradient	:		A	B
		0.01min	3%	97%
		25min	28%	62%
		25.1min	100%	0%
		30min	STOP	

Flow rate : 1.0 mL/min

Wavelength : 220nm

Volumn : 5ul



Peak No.	Ret Time	Height	Area	Conc.
1	7.445	12638.426	155456.203	0.6067
2	10.577	435276.188	25351972.000	98.9406
3	13.822	1205.485	34210.148	0.1335
4	20.302	2883.575	81798.102	0.3192
Total				100.0000