

■ POLYMER ADDITIVES

JADEWIN LS 783

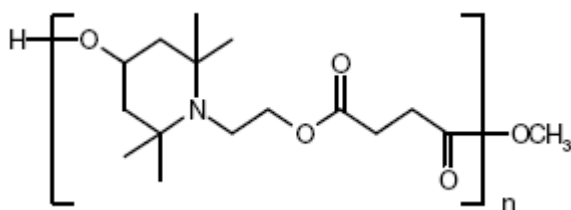
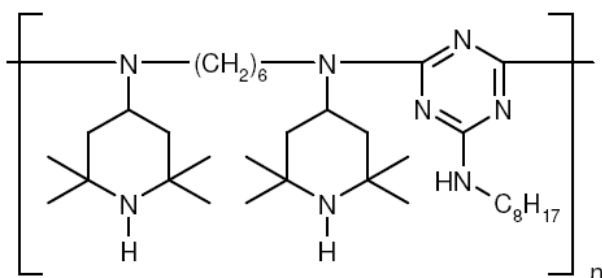
CHEMICAL COMPONENT

COMPONENT 1,6-Hexanediamine, N,N'-bis(2,2,6,6-tetramethyl-4-piperidiny)-, polymer with 2,4,6-trichloro-1,3,5-triazine, reaction products with 2,4,4-trimethyl-2-pentanamine

Butanedioic acid, dimethylester, polymer with 4-hydroxy-2,2,6,6-tetramethyl-1-piperidine ethanol

CAS 71878-19-8/65447-77-0

Molecular (C₃₅H₆₈N₈)_n
(C₁₅H₂₅NO₄)_n



SPECIFICATION AND PHYSICAL PROPERTIES

TEST	UNIT	SPECIFICATION
APPEARANCE		WHITE POWDER
MELTING RANGE	°C	90MIN
VOLATILES	%	1.00MAX
ASH	%	0.10MAX
CLARITY		CLEAR
TRANSMITTANCE		
450nm	%	90.00MIN
500nm	%	93.00MIN
CONTENT		



JADEWIN

杰得盈

71878-19-8

65447-77-0

**QINGDAO JADE NEW MATERIAL
TECHNOLOGY CO.,LTD**

青岛杰得佳新材料科技有限公司

48.00-52.00

48.00-52.00

FEATURE AND APPLICATION

- * Excellent Light Stabilization performance in thick-Section application
- * Contributes to the thermal oxidative stability of polyolefins
- * Low volatility and excellent resistance to migration
- * Extensive food contact clearances
- * JADEWIN LS 783 is a synergistic mixture of polymeric hindered amine light stabilizer (HALS) which is effective in a broad range of polymers and applications. The product is particularly useful in PE applications (injection molding, film, and tape), PP (injection molding, film, and fibers), TPO, polyamide fibers, flexible and rigid PVC, styrenic TPE's, polyurethanes, and specialty adhesive applications. JADEWIN LS 783 is a versatile light stabilizer for thin and thick sections and delivers excellent cost/performance benefits. Typical addition levels for JADEWIN LS 783 range from 0.05-1.5%, depending upon the application. The exact level to be used in any particular application should be determined in an appropriate testing program.

For additional information please consult the Material safety Data Sheet

PACKING

25Kg Carton Box, 500Kg Bag.

STORAGE

Keep container tightly closed and dry and storage in cool place

CHEMICAL INVENTORIES

Australia - AICS

Canada - DSL

China - IECSC

Japan - ENCS

New Zealand - NZIoC

Korea - ECL

USA - TSCA

Philippines - PICCS