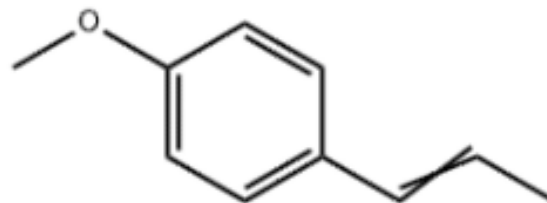


According to the UN GHS revision 9

 Version: 1.0
 Creation Date: July 15, 2019
 Revision Date: July 15, 2019
SECTION 1: Identification**1.1 GHS Product identifier**
 Product name Anethole MF: C₁₀H₁₂O
**1.2 Other means of identification**
 Product number -
 Other names cis-Anethol; 1-Methoxy-4-(prop-1-en-1-yl)benzene;
1.3 Recommended use of the chemical and restrictions on use
 Identified uses Industrial and scientific research use.
 Uses advised against no data available
1.4 Supplier's details
 Company Jiangxi LinQ Spices Co., Ltd.
 Address Building 15#, Xinghai Garden, TianLi Square, QingYuan District, Ji'An City, JiangXi Province
 Telephone (+86)0796-8287629
SECTION 2: Hazard identification**2.1 Classification of the substance or mixture**

Skin sensitization, Category 1

2.2 GHS label elements, including precautionary statements

Pictogram(s)



Signal word

Warning

Hazard statement(s)

H317 May cause an allergic skin reaction

Precautionary statement(s)

Prevention

 P261 Avoid breathing dust/fume/gas/mist/vapours/spray.
 P272 Contaminated work clothing should not be allowed out of the workplace.
 P280 Wear protective gloves/protective clothing/eye protection/face protection/hearing protection/...

Response

 P302+P352 IF ON SKIN: Wash with plenty of water/...
 P333+P317 If skin irritation or rash occurs: Get medical help.
 P321 Specific treatment (see ... on this label).
 P362+P364 Take off contaminated clothing and wash it before reuse.

Storage

none

Disposal

P501 Dispose of contents/container to an appropriate treatment and disposal facility in accordance with applicable laws and regulations, and product characteristics at time of disposal.

2.3 Other hazards which do not result in classification

no data available

SECTION 3: Composition/information on ingredients

3.1 Substances

Chemical name	Common names and synonyms	CAS number	EC number	Concentration
Anethole	Anethole	104-46-1	203-205-5	100%

SECTION 4: First-aid measures

4.1 Description of necessary first-aid measures

If inhaled

Move the victim into fresh air. If breathing is difficult, give oxygen. If not breathing, give artificial respiration and consult a doctor immediately. Do not use mouth to mouth resuscitation if the victim ingested or inhaled the chemical.

Following skin contact

Take off contaminated clothing immediately. Wash off with soap and plenty of water. Consult a doctor.

Following eye contact

Rinse with pure water for at least 15 minutes. Consult a doctor.

Following ingestion

Rinse mouth with water. Do not induce vomiting. Never give anything by mouth to an unconscious person. Call a doctor or Poison Control Center immediately.

4.2 Most important symptoms/effects, acute and delayed

ACUTE/CHRONIC HAZARDS: Toxic. (NTP, 1992)

4.3 Indication of immediate medical attention and special treatment needed, if necessary

Absorption, Distribution and Excretion

In biotransformation of anethole/...anisic acid...constituted the major urinary metabolite. ...there was a quantitative recovery of the dose admin.

SECTION 5: Fire-fighting measures

5.1 Suitable extinguishing media

To extinguish a fire involving this chemical you may use a dry chemical, carbon dioxide, foam or halon extinguisher; a water spray may also be used. (NTP, 1992)

5.2 Specific hazards arising from the chemical

This compound is combustible. (NTP, 1992)

5.3 Special protective actions for fire-fighters

Wear self-contained breathing apparatus for firefighting if necessary.

SECTION 6: Accidental release measures

6.1 Personal precautions, protective equipment and emergency procedures

Avoid dust formation. Avoid breathing mist, gas or vapours. Avoid contacting with skin and eye. Use personal protective equipment. Wear chemical impermeable gloves. Ensure adequate ventilation. Remove all sources of ignition. Evacuate personnel to safe areas. Keep people away from and upwind of spill/leak.

6.2 Environmental precautions

Prevent further spillage or leakage if it is safe to do so. Do not let the chemical enter drains. Discharge into the environment must be avoided.

6.3 Methods and materials for containment and cleaning up

Collect and arrange disposal. Keep the chemical in suitable and closed containers for disposal. Remove all sources of ignition. Use spark-proof tools and explosion-proof equipment. Adhered or collected material should be promptly disposed of, in accordance with appropriate laws and regulations.

SECTION 7: Handling and storage

7.1 Precautions for safe handling

Handling in a well ventilated place. Wear suitable protective clothing. Avoid contact with skin and eyes. Avoid formation of dust and aerosols. Use non-sparking tools. Prevent fire caused by electrostatic discharge steam.

7.2 Conditions for safe storage, including any incompatibilities

Store the container tightly closed in a dry, cool and well-ventilated place. Store apart from foodstuff containers or incompatible materials.

SECTION 8: Exposure controls/personal protection

8.1 Control parameters

Occupational Exposure limit values

no data available

Biological limit values

no data available

8.2 Appropriate engineering controls

Ensure adequate ventilation. Handle in accordance with good industrial hygiene and safety practice. Set up emergency exits and the risk-elimination area.

8.3 Individual protection measures, such as personal protective equipment (PPE)

Eye/face protection

Wear tightly fitting safety goggles with side-shields conforming to EN 166(EU) or NIOSH (US).

Skin protection

Wear fire/flammable resistant and impervious clothing. Handle with gloves. Gloves must be inspected prior to use. Wash and dry hands. The selected protective gloves have to satisfy the specifications of EU Directive 89/686/EEC and the standard EN 374 derived from it.

Respiratory protection

If the exposure limits are exceeded, irritation or other symptoms are experienced, use a full-face respirator.

Thermal hazards

no data available

SECTION 9: Physical and chemical properties and safety characteristics

Physical state	PHYSICAL DESCRIPTION: White crystals or a liquid. Odor of anise oil and a sweet taste. (NTP, 1992)
Colour	White crystals
Odour	ANISE OIL ODOR
Melting point/freezing point	23-22°C
Boiling point or initial boiling point and boiling range	234-237°C
Flammability	no data available
Lower and upper explosion limit/flammability limit	no data available
Flash point	90°C
Auto-ignition temperature	no data available
Decomposition temperature	no data available
pH	no data available
Kinematic viscosity	2.45X10 ⁻³ Pa.s
Solubility	Slightly soluble (NTP, 1992)
Partition coefficient n-octanol/water	no data available

octanol/water	
Vapour pressure	5.45 Pa @ 294 deg K
Density and/or relative density	0.9865
Relative vapour density	no data available
Particle characteristics	no data available

SECTION 10: Stability and reactivity

10.1 Reactivity

Slightly water soluble (NTP, 1992).

10.2 Chemical stability

no data available

10.3 Possibility of hazardous reactions

Protect from light (NTP, 1992).

10.4 Conditions to avoid

no data available

10.5 Incompatible materials

no data available

10.6 Hazardous decomposition products

no data available

SECTION 11: Toxicological information

Acute toxicity

- Oral: no data available
- Inhalation: no data available
- Dermal: no data available

Skin corrosion/irritation

no data available

Serious eye damage/irritation

no data available

Respiratory or skin sensitization

no data available

Germ cell mutagenicity

no data available

Carcinogenicity

no data available

Reproductive toxicity

no data available

STOT-single exposure

no data available

STOT-repeated exposure

no data available

Aspiration hazard

no data available

SECTION 12: Ecological information

12.1 Toxicity

- Toxicity to fish: no data available
- Toxicity to daphnia and other aquatic invertebrates: no data available
- Toxicity to algae: no data available
- Toxicity to microorganisms: no data available

12.2 Persistence and degradability

no data available

12.3 Bioaccumulative potential

Based upon an experimental water solubility of 111 mg/l(1), the BCF of anethole can be estimated to be approximately 43.4 from a regression-derived equation(2). This estimated BCF value suggests that bioconcentration in aquatic organisms is not expected to be an important fate process(SRC).

12.4 Mobility in soil

Using a structure estimation method based on molecular connectivity indexes, the Koc for anethole can be estimated to be about 680(1). The Koc for anethole can be estimated to be about 327 based on an experimental water solubility of 111 mg/L(3) and a regression derived equation(2). According to a suggested classification scheme(4), these estimated Koc values suggest that anethole has medium to low soil mobility.

12.5 Other adverse effects

no data available

SECTION 13: Disposal considerations

13.1 Disposal methods

Product

The material can be disposed of by removal to a licensed chemical destruction plant or by controlled incineration with flue gas scrubbing. Do not contaminate water, foodstuffs, feed or seed by storage or disposal. Do not discharge to sewer systems.

Contaminated packaging

Containers can be triply rinsed (or equivalent) and offered for recycling or reconditioning. Alternatively, the packaging can be punctured to make it unusable for other purposes and then be disposed of in a sanitary landfill. Controlled incineration with flue gas scrubbing is possible for combustible packaging materials.

SECTION 14: Transport information

14.1 UN Number

ADR/RID: no data available

IMDG: no data available

IATA: no data available

14.2 UN Proper Shipping Name

ADR/RID: no data available

IMDG: no data available

IATA: no data available

14.3 Transport hazard class(es)

ADR/RID: no data available

IMDG: no data available

IATA: no data available

14.4 Packing group, if applicable

ADR/RID: no data available

IMDG: no data available

IATA: no data available

14.5 Environmental hazards

ADR/RID: No

IMDG: No

IATA: No

14.6 Special precautions for user

no data available

14.7 Transport in bulk according to IMO instruments

no data available

SECTION 15: Regulatory information

15.1 Safety, health and environmental regulations specific for the product in question

Chemical name	Common names and synonyms	CAS number	EC number
Anethole	Anethole	104-46-1	203-205-5
European Inventory of Existing Commercial Chemical Substances (EINECS)			Listed.
EC Inventory			Listed.
United States Toxic Substances Control Act (TSCA) Inventory			Listed.
China Catalog of Hazardous chemicals 2015			Not Listed.
New Zealand Inventory of Chemicals (NZIoC)			Listed.
Philippines Inventory of Chemicals and Chemical Substances (PICCS)			Listed.
Vietnam National Chemical Inventory			Listed.
Chinese Chemical Inventory of Existing Chemical Substances (China IECSC)			Listed.
Korea Existing Chemicals List (KECL)			Listed.

SECTION 16: Other information

Information on revision

Creation Date July 15, 2019

Revision Date July 15, 2019

Abbreviations and acronyms

- CAS: Chemical Abstracts Service
- ADR: European Agreement concerning the International Carriage of Dangerous Goods by Road
- RID: Regulation concerning the International Carriage of Dangerous Goods by Rail
- IMDG: International Maritime Dangerous Goods
- IATA: International Air Transportation Association
- TWA: Time Weighted Average
- STEL: Short term exposure limit
- LC50: Lethal Concentration 50%
- LD50: Lethal Dose 50%
- EC50: Effective Concentration 50%

References

- IPCS - The International Chemical Safety Cards (ICSC), website: <http://www.ilo.org/dyn/icsc/showcard.home>
- HSDB - Hazardous Substances Data Bank, website: <https://toxnet.nlm.nih.gov/newtoxnet/hsdb.htm>
- IARC - International Agency for Research on Cancer, website: <http://www.iarc.fr/>
- eChemPortal - The Global Portal to Information on Chemical Substances by OECD, website: http://www.echemportal.org/echemportal/index?pageID=0&request_locale=en
- CAMEO Chemicals, website: <http://cameochemicals.noaa.gov/search/simple>
- ChemIDplus, website: <http://chem.sis.nlm.nih.gov/chemidplus/chemidlite.jsp>
- ERG - Emergency Response Guidebook by U.S. Department of Transportation, website: <http://www.phmsa.dot.gov/hazmat/library/erg>
- Germany GESTIS-database on hazard substance, website: <http://www.dguv.de/ifa/gestis/gestis-stoffdatenbank/index-2.jsp>
- ECHA - European Chemicals Agency, website: <https://echa.europa.eu/>

Disclaimer: The above information is believed to be correct but does not purport to be all inclusive and shall be used only as a guide. The information in this document is based on the present state of our knowledge and is applicable to the product with regard to appropriate safety precautions. It does not represent any guarantee of the properties of the product. We as supplier shall not be held liable for any damage resulting from handling or from contact with the above product.