

1. IDENTIFICATION OF THE SUBSTANCE/MIXTURE AND OF THE COMPANY/UNDERTAKING

ProductName : Lithium thiophenolate solution

2. HAZARDS IDENTIFICATION

**Risk advice to man and the environment**  
Highly flammable. May form explosive peroxides. Causes burns.

3. COMPOSITION/INFORMATION ON INGREDIENTS

|   |                        |   |                           |                 |
|---|------------------------|---|---------------------------|-----------------|
| Synonyms                                  | Thiophenollithium salt |   |                           |                 |
| Formula                                   | C6H5LiS                |   |                           |                 |
| CAS-No.                                   | EC-No.                 |   | Classification            | Concentration   |
| <b>Tetrahydrofuran</b><br>109-99-9        | 203-726-8              | - | F, Xi, R11 - R19 - R36/37 | >= 85 %         |
| <b>Lithium thiophenolate</b><br>2973-86-6 | -                      | - | C, R34                    | >= 10 - <= 15 % |

For the full text of the R-phrases mentioned in this Section, see Section 16.

4. FIRST AID MEASURES

**General advice**  
Consult a physician. Show this safety data sheet to the doctor in attendance.

**If inhaled**  
If breathed in, move person into fresh air. If not breathing give artificial respiration Consult a physician.

**In case of skin contact**  
Take off contaminated clothing and shoes immediately. Wash off with soap and plenty of water. Consult a physician.

**In case of eye contact**  
Rinse thoroughly with plenty of water for at least 15 minutes and consult a physician.

**If swallowed**  
Do NOT induce vomiting. Never give anything by mouth to an unconscious person. Rinse mouth with water. Consult a physician.

5. FIRE-FIGHTING MEASURES

**Suitable extinguishing media**  
For small (incipient) fires, use media such as "alcohol" foam, dry chemical, or carbon dioxide. For large fires, apply water from as far as possible. Use very large quantities (flooding) of water applied as a mist or spray; solid streams of water may be ineffective. Cool all affected containers with flooding quantities of water.

**Special protective equipment for fire-fighters**  
Wear self contained breathing apparatus for fire fighting if necessary.

**Further information**  
Use water spray to cool unopened containers.

6. ACCIDENTAL RELEASE MEASURES

**Personal precautions**  
Use personal protective equipment. Avoid breathing vapors, mist or gas. Ensure adequate ventilation. Remove all sources of ignition. Evacuate personnel to safe areas. Beware of vapours accumulating to form explosive concentrations. Vapours can accumulate in low areas.

**Environmental precautions**  
Prevent further leakage or spillage if safe to do so. Do not let product enter drains.

**Methods for cleaning up**  
Contain spillage, and then collect with non-combustible absorbent material, (e.g. sand, earth, diatomaceous earth, vermiculite) and place in container for disposal according to local / national regulations (see section 13).

7. HANDLING AND STORAGE

**Handling**  
Avoid inhalation of vapour or mist.  
Keep away from sources of ignition - No smoking. Take measures to prevent the build up of electrostatic charge.

**Storage**  
Store in cool place. Keep container tightly closed in a dry and well-ventilated place. Containers which are opened must be carefully resealed and kept upright to prevent leakage.

Test for peroxide formation periodically and before distillation. Dry residue is explosive. Store under inert gas.

8. EXPOSURE CONTROLS/PERSONAL PROTECTION

**Personal protective equipment**

**Respiratory protection**  
Where risk assessment shows air-purifying respirators are appropriate use a full-face respirator with multi-purpose combination (US) or type ABEK (EN 14387) respirator cartridges as a backup to engineering controls. If the respirator is the sole means of protection, use a full-face supplied air respirator. Use respirators and components tested and approved under appropriate government standards such as NIOSH (US) or CEN (EU).

**Hand protection**  
The selected protective gloves have to satisfy the specifications of EU Directive 89/686/EEC and the standard EN 374 derived from it. Handle with gloves.

**Eye protection**  
Tightly fitting safety goggles. Faceshield (8-inch minimum).

**Skin and body protection**  
Choose body protection according to the amount and concentration of the dangerous substance at the work place.

**Hygiene measures**  
Handle in accordance with good industrial hygiene and safety practice. Wash hands before breaks and at the end of workday.

9. PHYSICAL AND CHEMICAL PROPERTIES

|                       |                     |
|-----------------------|---------------------|
| <b>Appearance</b>     |                     |
| Form                  | liquid              |
| <b>Safety data</b>    |                     |
| pH                    | no data available   |
| Melting point         | no data available   |
| Boiling point         | 67 °C at 1.013 hPa  |
| Flash point           | -17 °C - closed cup |
| Ignition temperature  | no data available   |
| Lower explosion limit | no data available   |
| Upper explosion limit | no data available   |
| Density               | 0,934 g/cm3         |
| Water solubility      | no data available   |

10. STABILITY AND REACTIVITY

**Storage stability**  
Stable under recommended storage conditions.

**Conditions to avoid**  
Heat, flames and sparks.

**Materials to avoid**  
Oxidizing agents, Strong oxidizing agents, Oxygen

**Hazardous decomposition products**  
Hazardous decomposition products formed under fire conditions. - Carbon oxides, Sulphur oxides, Lithium oxides

11. TOXICOLOGICAL INFORMATION

**Acute toxicity**  
no data available

**Irritation and corrosion**  
no data available

**Sensitisation**  
no data available

**Chronic exposure**

IARC: No component of this product present at levels greater than or equal to 0.1% is identified as probable, possible or confirmed human carcinogen by IARC.

**Signs and Symptoms of Exposure**

Material is extremely destructive to tissue of the mucous membranes and upper respiratory tract, eyes, and skin, spasm, inflammation and edema of the larynx, spasm, inflammation and edema of the bronchi, pneumonitis, pulmonary edema, burning sensation, Cough, wheezing, laryngitis, Shortness of breath, Headache, Nausea

**Potential Health Effects**

|                      |   |
|----------------------|---|
| <b>Inhalation</b>    | May be harmful if inhaled. Material is extremely destructive to the tissue of the mucous membranes and upper respiratory tract. |
| <b>Skin</b>          | May be harmful if absorbed through skin. Causes skin burns.   |
| <b>Eyes</b>          | Causes eye burns.   |
| <b>Ingestion</b>     | May be harmful if swallowed. Causes burns.  |
| <b>Target Organs</b> | Central nervous system, Liver, Kidney,  |

12. ECOLOGICAL INFORMATION

**Elimination information (persistence and degradability)**  
no data available

**Ecotoxicity effects**  
no data available

**Further information on ecology**  
no data available

13. DISPOSAL CONSIDERATIONS

**Product**  
Burn in a chemical incinerator equipped with an afterburner and scrubber but exert extra care in igniting as this material is highly flammable. Observe all federal, state, and local environmental regulations. Contact a licensed professional waste disposal service to dispose of this material.

**Contaminated packaging**  
Dispose of as unused product.

14. TRANSPORT INFORMATION

|  |                   |                  |
|--|-------------------|------------------|
| Proper shipping name: FLAMMABLE LIQUID, CORROSIVE, N.O.S. (Tetrahydrofuran, Lithium thiophenolate)   |                   |                  |
| <b>IMDG</b>  |                   |                  |
| UN-Number: 2924 Class: 3 (8)   | Packing group: II | EMS-No: F-E, S-C |
| Proper shipping name: FLAMMABLE LIQUID, CORROSIVE, N.O.S. (Tetrahydrofuran, Lithium thiophenolate)   |                   |                  |
| Marine pollutant: No   |                   |                  |
| <b>IATA</b>  |                   |                  |
| UN-Number: 2924 Class: 3 (8)   | Packing group: II |                  |
| Proper shipping name: Flammable liquid, corrosive n.o.s. (Tetrahydrofuran, Lithium thiophenolate)  |                   |                  |
| <b>REGULATORY INFORMATION</b>  |                   |                  |
| IATA<br>IATA<br>IATA<br>IATA<br>IATA<br>IATA<br>IATA<br>IATA<br>IATA<br>IATA<br>IATA<br>IATA<br>IATA<br>IATA<br>IATA<br>IATA<br>IATA<br>IATA<br>IATA<br>IATA<br>IATA<br>IATA<br>IATA<br>IATA<br>IATA<br>IATA<br>IATA<br>IATA<br>IATA<br>IATA<br>IATA<br>IATA<br>IATA<br>IATA<br>IATA<br>IATA<br>IATA<br>IATA<br>IATA<br>IATA<br>IATA<br>IATA<br>IATA<br>IATA<br>IATA<br>IATA<br>IATA<br>IATA<br>IATA<br>IATA<br>IATA<br>IATA<br>IATA<br>IATA<br>IATA<br>IATA<br>IATA<br>IATA<br>IATA<br>IATA<br>IATA<br>IATA<br>IATA<br>IATA<br>IATA<br>IATA<br>IATA<br>IATA<br>IATA<br>IATA<br>IATA<br>IATA<br>IATA<br>IATA<br>IATA<br>IATA<br>IATA<br>IATA<br>IATA<br>IATA<br>IATA<br>IATA<br>IATA<br>IATA<br>IATA<br>IATA<br>IATA<br>IATA<br>IATA<br>IATA<br>IATA<br>IATA<br>IATA<br>IATA<br>IATA<br>IATA<br>IATA<br>IATA<br>IATA<br>IATA<br>IATA<br>IATA<br>IATA<br>IATA<br>IATA<br>IATA<br>IATA<br>IATA<br>IATA<br>IATA<br>IATA<br>IATA<br>IATA<br>IATA<br>IATA<br>IATA<br>IATA<br>IATA<br>IATA<br>IATA<br>IATA<br>IATA<br>IATA<br>IATA<br>IATA<br>IATA<br>IATA<br>IATA<br>IATA<br>IATA<br>IATA<br>IATA<br>IATA<br>IATA<br>IATA<br>IATA<br>IATA<br>IATA<br>IATA<br>IATA<br>IATA<br>IATA<br>IATA<br>IATA<br>IATA<br>IATA<br>IATA<br>IATA<br>IATA<br>IATA<br>IATA<br>IATA<br>IATA<br>IATA<br>IATA<br>IATA<br>IATA<br>IATA<br>IATA<br>IATA<br>IATA<br>IATA<br>IATA<br>IATA<br>IATA<br>IATA<br>IATA<br>IATA<br>IATA<br>IATA<br>IATA<br>IATA<br>IATA<br>IATA<br>IATA<br>IATA<br>IATA<br>IATA<br>IATA<br>IATA<br>IATA<br>IATA<br>IATA<br>IATA<br>IATA<br>IATA<br>IATA<br>IATA<br>IATA<br>IATA<br>IATA<br>IATA<br>IATA<br>IATA<br>IATA<br>IATA<br>IATA<br>IATA<br>IATA<br>IATA<br>IATA<br>IATA<br>IATA<br>IATA<br>IATA<br>IATA<br>IATA<br>IATA<br>IATA<br>IATA<br>IATA<br>IATA<br>IATA<br>IATA<br>IATA<br>IATA<br>IATA<br>IATA<br>IATA<br>IATA<br>IATA<br>IATA<br>IATA<br>IATA<br>IATA<br>IATA<br>IATA<br>IATA<br>IATA<br>IATA<br>IATA<br>IATA<br>IATA<br>IATA<br>IATA<br>IATA<br>IATA<br>IATA<br>IATA<br>IATA<br>IATA<br>IATA<br>IATA<br>IATA<br>IATA<br>IATA<br>IATA<br>IATA<br>IATA<br>IATA<br>IATA<br>IATA<br>IATA<br>IATA<br>IATA<br>IATA<br>IATA<br>IATA<br>IATA<br>IATA<br>IATA<br>IATA<br>IATA<br>IATA<br>IATA<br>IATA<br>IATA<br>IATA<br>IATA<br>IATA<br>IATA<br>IATA<br>IATA<br>IATA<br>IATA<br>IATA<br>IATA<br>IATA<br>IATA<br>IATA<br>IATA<br>IATA<br>IATA<br>IATA<br>IATA<br>IATA<br>IATA<br>IATA<br>IATA<br>IATA<br>IATA<br>IATA<br>IATA<br>IATA<br>IATA<br>IATA<br>IATA<br>IATA<br>IATA<br>IATA<br>IATA<br>IATA<br>IATA<br>IATA<br>IATA<br>IATA<br>IATA<br>IATA<br>IATA<br>IATA<br>IATA<br>IATA<br>IATA<br>IATA<br>IATA<br>IATA<br>IATA<br>IATA<br>IATA<br>IATA<br>IATA<br>IATA<br>IATA<br>IATA<br>IATA<br>IATA<br>IATA<br>IATA<br>IATA<br>IATA<br>IATA<br>IATA<br>IATA<br>IATA<br>IATA<br>IATA<br>IATA<br>IATA<br>IATA<br>IATA<br>IATA<br>IATA<br>IATA<br>IATA<br>IATA<br>IATA<br>IATA<br>IATA<br>IATA<br>IATA<br>IATA<br>IATA<br>IATA<br>IATA<br>IATA<br>IATA<br>IATA<br>IATA<br>IATA<br>IATA<br>IATA<br>IATA<br>IATA<br>IATA<br>IATA<br>IATA<br>IATA<br>IATA<br>IATA<br>IATA<br>IATA<br>IATA<br>IATA<br>IATA<br>IATA<br>IATA<br>IATA<br>IATA<br>IATA<br>IATA<br>IATA<br>IATA<br>IATA<br>IATA<br>IATA<br>IATA<br>IATA<br>IATA<br>IATA<br>IATA<br>IATA<br>IATA<br>IATA<br>IATA<br>IATA<br>IATA<br>IATA<br>IATA<br>IATA<br>IATA<br>IATA<br>IATA<br>IATA<br>IATA<br>IATA<br>IATA<br>IATA<br>IATA<br>IATA<br>IATA<br>IATA<br>IATA<br>IATA<br>IATA<br>IATA<br>IATA<br>IATA<br>IATA<br>IATA<br>IATA<br>IATA<br>IATA<br>IATA<br>IATA<br>IATA<br>IATA<br>IATA<br>IATA<br>IATA<br>IATA<br>IATA<br>IATA<br>IATA<br>IATA<br>IATA<br>IATA<br>IATA<br>IATA<br>IATA<br>IATA<br>IATA<br>IATA<br>IATA<br>IATA<br>IATA<br>IATA<br>IATA<br>IATA<br>IATA<br>IATA<br>IATA<br>IATA<br>IATA<br>IATA<br>IATA<br>IATA<br>IATA<br>IATA<br>IATA<br>IATA<br>IATA<br>IATA<br>IATA<br>IATA<br>IATA<br>IATA<br>IATA<br>IATA<br>IATA<br>IATA<br>IATA<br>IATA<br>IATA<br>IATA<br>IATA<br>IATA<br>IATA<br>IATA<br>IATA<br>IATA<br>IATA<br>IATA<br>IATA<br>IATA<br>IATA<br>IATA<br>IATA<br>IATA<br>IATA<br>IATA<br>IATA<br>IATA<br>IATA<br>IATA<br>IATA<br>IATA<br>IATA<br>IATA<br>IATA<br>IATA<br>IATA<br>IATA<br>IATA<br>IATA<br>IATA<br>IATA<br>IATA<br>IATA<br>IATA<br>IATA<br>IATA<br>IATA<br>IATA<br>IATA<br>IATA<br>IATA<br>IATA<br>IATA<br>IATA<br>IATA<br>IATA<br>IATA<br>IATA<br>IATA<br>IATA<br>IATA<br>IATA<br>IATA<br>IATA<br>IATA<br>IATA<br>IATA<br>IATA<br>IATA<br>IATA<br>IATA<br>IATA<br>IATA<br>IATA<br>IATA<br>IATA<br>IATA<br>IATA<br>IATA<br>IATA<br>IATA<br>IATA<br>IATA<br>IATA<br>IATA<br>IATA<br>IATA<br>IATA<br>IATA<br>IATA<br>IATA<br>IATA<br>IATA<br>IATA<br>IATA<br>IATA<br>IATA<br>IATA<br>IATA<br>IATA<br>IATA<br>IATA<br>IATA<br>IATA<br>IATA<br>IATA<br>IATA<br>IATA<br>IATA<br>IATA<br>IATA<br>IATA<br>IATA<br>IATA<br>IATA<br>IATA<br>IATA<br>IATA<br>IATA<br>IATA<br>IATA<br>IATA<br>IATA<br>IATA<br>IATA<br>IATA<br>IATA<br>IATA<br>IATA<br>IATA<br>IATA<br>IATA<br>IATA<br>IATA<br>IATA<br>IATA<br>IATA<br>IATA<br>IATA<br>IATA<br>IATA<br>IATA<br>IATA<br>IATA<br>IATA<br>IATA<br>IATA<br>IATA<br>IATA<br>IATA<br>IATA<br>IATA<br>IATA<br>IATA<br>IATA<br>IATA<br>IATA<br>IATA<br>IATA<br>IATA<br>IATA<br>IATA<br>IATA<br>IATA<br>IATA<br>IATA<br>IATA<br>IATA<br>IATA<br>IATA<br>IATA<br>IATA<br>IATA<br>IATA<br>IATA<br>IATA<br>IATA<br>IATA<br>IATA<br>IATA<br>IATA<br>IATA<br>IATA<br>IATA<br>IATA<br>IATA<br>IATA<br>IATA<br>IATA<br>IATA<br>IATA<br>IATA<br>IATA<br>IATA<br>IATA<br>IATA<br>IATA<br>IATA<br>IATA<br>IATA<br>IATA<br>IATA<br>IATA<br>IATA<br>IATA<br>IATA<br>IATA<br>IATA<br>IATA<br>IATA<br>IATA<br>IATA<br>IATA<br>IATA<br>IATA<br>IATA<br>IATA<br>IATA<br>IATA<br>IATA<br>IATA<br>IATA<br>IATA<br>IATA<br>IATA<br>IATA<br>IATA<br>IATA<br>IATA<br>IATA<br>IATA<br>IATA<br>IATA<br>IATA<br>IATA<br>IATA<br>IATA<br>IATA<br>IATA<br>IATA<br>IATA<br>IATA<br>IATA<br>IATA<br>IATA<br>IATA<br>IATA<br>IATA<br>IATA<br>IATA<br>IATA<br>IATA<br>IATA<br>IATA<br>IATA<br>IATA<br>IATA<br>IATA<br>IATA<br>IATA<br>IATA<br>IATA<br>IATA<br>IATA<br>IATA<br>IATA<br>IATA<br>IATA<br>IATA<br>IATA<br>IATA<br>IATA<br>IATA<br>IATA<br>IATA<br>IATA<br>IATA<br>IATA<br>IATA<br>IATA<br>IATA<br>IATA<br>IATA<br>IATA<br>IATA<br>IATA<br>IATA<br>IATA<br>IATA<br>IATA<br>IATA<br>IATA<br>IATA<br>IATA<br>IATA<br>IATA<br>IATA<br>IATA<br>IATA<br>IATA<br>IATA<br>IATA<br>IATA<br>IATA<br>IATA<br>IATA<br>IATA<br>IATA<br>IATA<br>IATA<br>IATA<br>IATA<br>IATA<br>IATA<br>IATA<br>IATA<br>IATA<br>IATA<br>IATA<br>IATA<br>IATA<br>IATA<br>IATA<br>IATA<br>IATA<br>IATA<br>IATA<br>IATA<br>IATA<br>IATA<br>IATA<br>IATA<br>IATA<br>IATA<br>IATA<br>IATA<br>IATA<br>IATA<br>IATA<br>IATA<br>IATA<br>IATA<br>IATA<br>IATA<br>IATA<br>IATA<br>IATA<br>IATA<br>IATA<br>IATA<br>IATA<br>IATA<br>IATA<br>IATA<br>IATA<br>IATA<br>IATA<br>IATA<br>IATA<br>IATA<br>IATA<br>IATA<br>IATA<br>IATA<br>IATA<br>IATA<br>IATA<br>IATA<br>IATA<br>IATA<br>IATA<br>IATA<br>IATA<br>IATA<br>IATA<br>IATA<br>IATA<br>IATA<br>IATA<br>IATA<br>IATA<br>IATA<br>IATA<br>IATA<br>IATA<br>IATA<br>IATA<br>IATA<br>IATA<br>IATA<br>IATA<br>IATA<br>IATA<br>IATA<br>IATA<br>IATA<br>IATA<br>IATA<br>IATA<br>IATA<br>IATA<br>IATA<br>IATA<br>IATA<br>IATA<br>IATA<br>IATA<br>IATA<br>IATA<br>IATA<br>IATA<br>IATA<br>IATA<br>IATA<br>IATA<br>IATA<br>IATA<br>IATA<br>IATA<br>IATA<br>IATA<br>IATA<br>IATA<br>IATA<br>IATA<br>IATA<br>IATA<br>IATA<br>IATA<br>IATA<br>IATA<br>IATA<br>IATA<br>IATA<br>IATA<br>IATA<br>IATA<br>IATA<br>IATA<br>IATA<br>IATA<br>IATA<br>IATA<br>IATA<br>IATA<br>IATA<br>IATA<br>IATA<br>IATA<br>IATA<br>IATA<br>IATA<br>IATA<br>IATA<br>IATA<br>IATA<br>IATA<br>IATA<br>IATA<br>IATA<br>IATA<br>IATA<br>IATA<br>IATA<br>IATA<br>IATA<br>IATA<br>IATA<br>IATA<br>IATA<br>IATA<br>IATA<br>IATA<br>IATA<br>IATA<br>IATA<br>IATA<br>IATA<br>IATA<br>IATA<br>IATA<br>IATA<br>IATA<br>IATA<br>IATA<br>IATA<br>IATA<br>IATA<br>IATA<br>IATA<br>IATA<br>IATA<br>IATA<br>IATA<br>IATA<br>IATA<br>IATA<br>IATA<br>IATA<br>IATA<br>IATA<br>IATA<br>IATA<br>IATA<br>IATA<br>IATA<br>IATA<br>IATA<br>IATA<br>IATA<br>IATA<br>IATA<br>IATA<br>IATA<br>IATA<br>IATA<br>IATA<br>IATA<br>IATA<br>IATA<br>IATA<br>IATA<br>IATA<br>IATA<br>IATA<br>IATA<br>IATA<br>IATA<br>IATA<br>IATA<br>IATA<br>IATA<br>IATA<br>IATA<br>IATA<br>IATA<br>IATA<br>IATA<br>IATA<br>IATA<br>IATA<br>IATA<br>IATA<br>IATA<br>IATA<br>IATA<br>IATA<br>IATA<br>IATA<br>IATA<br>IATA<br>IATA<br>IATA<br>IATA<br>IATA<br>IATA<br>IATA<br>IATA<br>IATA<br>IATA<br>IATA<br>IATA<br>IATA<br>IATA<br>IATA<br>IATA<br>IATA<br>IATA<br>IATA<br>IATA<br>IATA<br>IATA<br>IATA<br>IATA<br>IATA<br>IATA<br>IATA<br>IATA<br>IATA<br>IATA<br>IATA<br>IATA<br>IATA<br>IATA<br>IATA<br>IATA<br>IATA<br>IATA<br>IATA<br>IATA<br>IATA<br>IATA<br>IATA<br>IATA<br>IATA<br>IATA<br>IATA<br>IATA<br>IATA<br>IATA<br>IATA<br>IATA<br>IATA<br>IATA<br>IATA<br>IATA<br>IATA<br>IATA<br>IATA<br>IATA<br>IATA<br>IATA<br>IATA<br>IATA<br>IATA<br>IATA<br>IATA<br>IATA<br>IATA<br>IATA<br>IATA<br>IATA<br>IATA<br>IATA<br>IATA<br>IATA<br>IATA<br>IATA<br>IATA<br>IATA<br>IATA<br>IATA<br>IATA<br>IATA<br>IATA<br>IATA<br>IATA<br>IATA<br>IATA<br>IATA<br>IATA<br>IATA<br>IATA<br>IATA<br>IATA<br>IATA<br>IATA<br>IATA<br>IATA<br>IATA<br>IATA<br>IATA<br>IATA<br>IATA<br>IATA<br>IATA<br>IATA<br>IATA<br>IATA<br>IATA<br>IATA<br>IATA<br>IATA<br>IATA<br>IATA<br>IATA<br>IATA<br>IATA<br>IATA<br>IATA<br>IATA<br>IATA<br>IATA<br>IATA<br>IATA<br>IATA<br>IATA<br>IATA<br>IATA<br>IATA<br>IATA<br>IATA<br>IATA<br>IATA<br>IATA<br>IATA<br>IATA<br>IATA<br>IATA<br>IATA<br>IATA<br>IATA<br>IATA<br>IATA<br>IATA<br>IATA<br>IATA<br>IATA<br>IATA<br>IATA<br>IATA<br>IATA<br>IATA<br>IATA<br>IATA<br>IATA<br>IATA<br>IATA<br>IATA<br>IATA<br>IATA<br>IATA<br>IATA<br>IATA<br>IATA<br>IATA<br>IATA<br>IATA<br>IATA<br>IATA<br>IATA<br>IATA<br>IATA<br>IATA<br>IATA<br>IATA<br>IATA<br>IATA<br>IATA<br>IATA<br>IATA<br>IATA<br>IATA<br>IATA<br>IATA<br>IATA<br>IATA<br>IATA<br>IATA<br>IATA<br>IATA<br>IATA<br>IATA<br>IATA<br>IATA<br>IATA<br>IATA<br>IATA<br>IATA<br>IATA<br>IATA<br>IATA<br>IATA<br>IATA<br>IATA<br>IATA<br>IATA<br>IATA<br>IATA<br>IATA<br>IATA<br>IATA<br>IATA<br>IATA<br>IATA<br>IATA<br>IATA<br>IATA<br>IATA<br>IATA<br>IATA<br>IATA<br>IATA<br>IATA<br>IATA<br>IATA<br>IATA<br>IATA<br>IATA<br>IATA<br>IATA<br>IATA<br>IATA<br>IATA<br>IATA<br>IATA<br>IATA<br>IATA<br>IATA<br>IATA<br>IATA<br>IATA<br>IATA<br>IATA<br>IATA<br>IATA<br>IATA<br>IATA<br>IATA<br>IATA<br>IATA<br>IATA<br>IATA<br>IATA<br>IATA<br>IATA<br>IATA<br>IATA<br>IATA<br>IATA<br>IATA<br>IATA<br>IATA<br>IATA<br>IATA |                   |                  |

15. REGULATORY INFORMATION

Labelling according to EC Directives

|   |   |
|---|---|
| Hazard symbols  |   |
| F   | Highly flammable  |
| C   | Corrosive   |
| R-phrases(s)  |   |
| R11   | Highly flammable.   |
| R19   | May form explosive peroxides.   |
| R34   | Causes burns.   |
| S-phrases(s)  |   |
| S16   | Keep away from sources of ignition - No smoking.  |
| S26   | In case of contact with eyes, rinse immediately with plenty of water and seek medical advice.               |
| S36/37/39   | Wear suitable protective clothing, gloves and eye/face protection.  |
| S45   | In case of accident or if you feel unwell, seek medical advice immediately (show the label where possible). |
| Hazardous components which must be listed on the label: |   |
| 2973-86-6   | Lithium thiophenolate   |

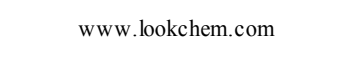
16. OTHER INFORMATION

**Text of R-phrases mentioned in Section 3**

|        |  |
|--------|--|
| R11    | Highly flammable.                          |
| R19    | May form explosive peroxides.              |
| R34    | Causes burns.                              |
| R36/37 | Irritating to eyes and respiratory system. |

Further information

For R&D use only. Not for drug, household or other uses.



Look for Chemicals

www.lookchem.com

**WARRANTY:**  
The above information is believed to be correct but does not purport to be all inclusive and shall be used only as a guide. The information in this document is based on the present state of our knowledge and is applicable to the product with regard to appropriate safety precautions. It does not represent any guarantee of the properties of the product. Lookchem shall not be held liable for any damage resulting from handling or from contact with the above product. See reverse side of invoice or packing slip for additional terms and conditions of sale.